



# SaskMilk

June 2026



**In this Issue:**

**SaskMilk  
Quota  
Exchange  
Results**

**Industry  
Updates**

**SK  
Production  
Update**

# INDUSTRY UPDATES



FOR	CONTACT	AT
Legislation Orders Policies Program Development	Ashley Egyedy	(306) 721-9451
Quota Exchange and Private Quota Transfers Leases Transfer Credits Security Applications Projections for production Name Changes Designation of Signing Authority Monthly production numbers for producers	Bev Solie	(306) 721-9488
Sponsorship Requests Donation Requests Dairyanna's Costume and Events School Milk Program Nutrition Resource Ordering Social media enquiries (Twitter, Instagram, Facebook) Promotional Items	Breann Eberle	(306) 721-9483
Website enquiries Newsletter advertising Sponsorship requests Dairy Conference	Cailyn Jones	(306) 721-9482
Trade agreements, international trade updates Quota Issuance and Production	Chera Coates	(306) 721-9485
On Farm- licensing, facilities, equipment, driveways, yards, animal care Milk pickups, communication of milk pickup delays or issues Milk Transportation Milk Graders- licensing, complaints/issues Bulk tank calibrations Environment and Regulatory	Chris Pinno	(306) 537-2459
Producer statements Banking info for direct deposit of milk pay Milk pick-up issues -variances in volumes, planning to quit shipping, etc. SaskMilk Portal Assistance Dairy Conference	Jenn Buehler	(306) 721-9492
Website inquiries Media or news stories or if you have been contacted by any media agency or reporter	Julie Ell	(306) 721-9493
General Inquiries Portal Support Information on registrations/details on SaskMilk producer events.	Michelle Belanger	(306) 721-9490
On Farm- licensing, facilities, equipment, driveways, yards, animal care Lab testing results Pro Action- Food Safety (CQM), Animal Care, Traceability, Biosecurity, Environment Extension services Research enquires	Tina Leverton	(306) 721-9486

## New World Screwworm

The Canadian Food Inspection Agency (CFIA) has announced temporary import restrictions on livestock that originate from or were present in the state of Texas within 21 days prior to border crossing following a case of New World Screwworm.

Analyses has determined that flies responsible for New World Screwworm cannot survive Canadian winters but can survive shorter time periods in the warmer months.

It is of utmost importance to be vigilant when importing animals. Isolating new animals and monitoring for signs of any disease over two or three weeks is the most advisable prevention measure.

To read more about New World Screwworm, click [here](#).

## World Milk Day 2026

World Milk Day was on June 1st! SaskMilk was excited to host another hot dog sale at the SaskMilk office with proceeds donated to the Regina Food Bank. New this year was the sale of sundaes, made with 100% Canadian Milk, as a tasty treat! We thank all who attended World Milk Day to celebrate and give back to the community.

To see pictures, go to page 13.

SASKATCHEWAN MILK POOL RESULTS MAY 2026	
Milk Sale Revenue	\$26,088,113.51
WMP Revenue/<Expense>	\$(1,047,028.68)
<b>Total Revenue</b>	<b>\$25,041,084.83</b>

WEIGHTED AVERAGE COMPONENT TESTS & PRICES MAY 2026		
COMPONENTS	AVERAGE TEST	PRICE PER KILOGRAM CLASS 1 TO 5
Butterfat	4.3573	\$15.720633
Protein	3.3704	\$7.258361
Other Solids	5.9325	\$0.824745

The average butterfat price received per kilogram was \$22.46



LOST OPPORTUNITY REPORT		
MONTH	# OF PRODUCERS	LOST OPPORTUNITY (KGS OF BUTTERFAT)
May 2025	3	521
June 2025	1	121
July 2025	1	209
August 2025	1	54
September 2025	1	655
October 2025	12	488
November 2025	2	217
December 2025	2	404
January 2026	3	614
February 2026	2	142
March 2026	1	161
April 2026	1	21
May 2026	1	5

TRANSFER CREDIT SUMMARY REPORT			
MONTH	# OF PRODUCERS TRANSFER IN	# OF PRODUCERS TRANSFER OUT	TOTAL KGS OF BUTTERFAT
May 2025	17	17	14,624.00
June 2025	17	17	14,523.00
July 2025	24	24	21,814.00
August 2025	29	29	46,008.00
September 2025	24	24	27,690.00
October 2025	33	33	36,484.00
November 2025	30	31	31,435.00
December 2025	14	14	8,421.00
January 2026	21	21	18,275.00
February 2026	18	18	17,301.00
March 2026	17	17	13,091.00
April 2026	8	8	7,430.00
May 2026	9	9	3,795.00

PRIVATE TRANSFERS PROCESSED	
MONTH	DAILY KILOGRAMS
May 2025	0.00
June 2025	0.00
July 2025	0.00
August 2025	0.00
September 2025	14.30
October 2025	0.00
November 2025	0.00
December 2025	0.00
January 2026	0.00
February 2026	0.00
March 2026	0.00
April 2026	0.00
May 2026	240.00

OVER QUOTA (OVER 5 DAYS) REPORT BY MONTH		
MONTH	# OF PRODUCERS	KGS BUTTERFAT
May 2025	1	7
June 2025	1	15
July 2025	0	0
August 2025	1	44
September 2025	5	97
October 2025	3	102
November 2025	8	1,103
December 2025	4	1,700
January 2026	8	884
February 2026	10	1,166
March 2026	10	758
April 2026	11	575
May 2026	6	443

MAY SUMMARY REPORT OF CREDITS - 138 PRODUCERS		
DAYS	# OF PRODUCERS	POSITIVE CREDITS ACCUMULATED (KGS OF BUTTERFAT)
+ 5	6	8,242.15
0 to + 5	71	50,970.86
<b>TOTAL</b>	<b>77</b>	<b>59,213.01</b>
DAYS	# OF PRODUCERS	NEGATIVE CREDITS ACCUMULATED (KGS OF BUTTERFAT)
0 to -5	35	-17,806.62
-5 to -10	18	-36,443.44
-10 to -15	7	-13,979.75
-15	1	-401.10
<b>TOTAL</b>	<b>61</b>	<b>-68,630.91</b>

Test stations are located at the following locations:			
Location	Address	Hours	Contact
Saputo	122 Wakooma Street, Saskatoon, SK	Monday to Friday 8:00 am - 4:00 pm	N/A
Warman Veterinary Services	86 Great Plains Rd, 100A Crystal Springs Dr, Warman SK	After Hours	Ph: 306-347-9995
Star City Colony		After Hours	Ruben Tschetter Ph: 306-921-9381

# SK Production Update

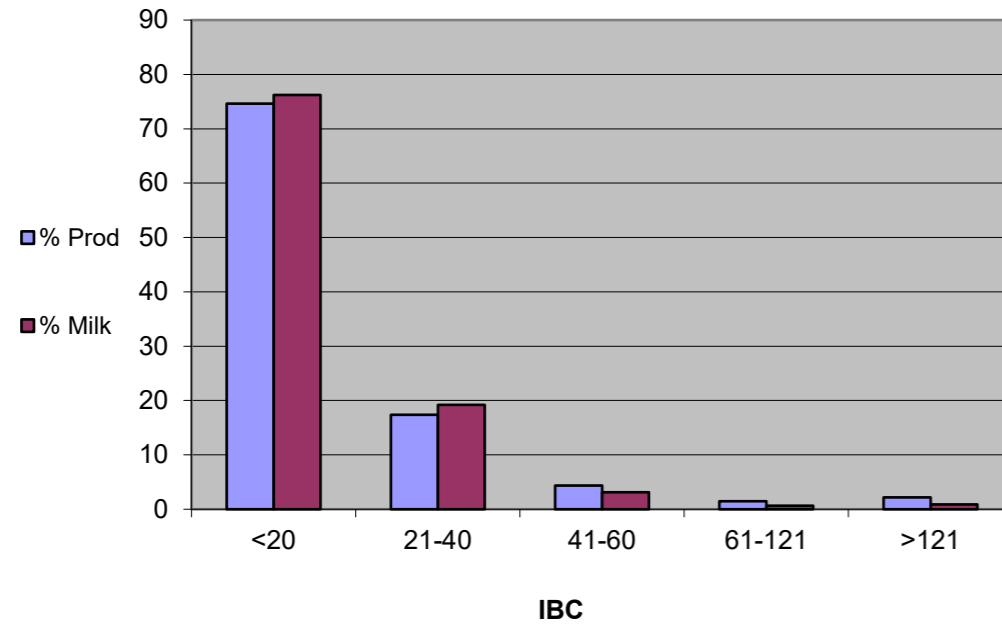
	(1) Monthly Total Production  Kgs of bf	(2) Total Monthly CDC Quota Allocation  Kgs bf	(3) Monthly Over or (Under) Production  Kgs bf  col. 1 - 2 = 3	(4) Lower Flexibility Limit -2.00%  Kgs bf  col. 8 * -1.5%	(5) Upper Flexibility Limit 1.25%  Kgs bf  col. 8 *1.0%	(6) Cumulative Over or (Under) Production with limits  Kgs bf	(7) Cumulative Over or (Under) Production with limits (%)  col. 6 / 8	(8) Rolling 12 Month Total Quota  Kgs bf
Apr-25	1,130,896	1,095,871	88,427	-259,863	162,414	1,214,407	9.35%	12,993,136
May-25	1,149,773	1,197,497	(47,724)	-263,634	164,771	1,113,464	8.45%	13,181,719
Jun-25	1,112,264	1,012,081	100,183	-263,400	164,625	1,213,647	9.22%	13,170,000
Jul-25	1,158,182	1,011,808	146,374	-262,944	164,340	1,360,021	10.34%	13,147,185
Aug-25	1,165,184	1,154,985	10,199	-266,231	166,394	1,220,969	9.17%	13,311,549
Sep-25	1,136,548	1,194,114	(57,566)	-267,713	167,321	1,163,403	8.69%	13,385,673
Oct-25	1,185,500	1,205,883	(20,383)	-267,293	167,058	1,143,020	8.55%	13,364,644
Nov-25	1,145,433	1,199,932	(54,499)	-269,200	168,250	1,088,521	8.09%	13,460,010
Dec-25	1,171,770	1,143,106	28,664	-269,771	168,607	1,117,185	8.28%	13,488,525
Jan-26	1,164,659	1,019,560	145,099	-269,120	168,200	1,262,284	9.38%	13,455,981
Feb-26	1,045,416	1,044,562	854	-271,245	169,528	1,263,138	9.31%	13,562,234
Mar-26	1,139,140	1,254,862	(115,722)	-273,670	171,044	1,147,416	8.39%	13,683,512
<b>Apr-26</b>	<b>1,091,083</b>	<b>1,042,469</b>	<b>48,614</b>	<b>-272,602</b>	<b>170,376</b>	<b>1,196,030</b>	<b>8.77%</b>	<b>13,630,110</b>

In April, Saskatchewan had a monthly CDC allocation of 1,042,469 kilograms of butterfat. Saskatchewan production was 48,614 kgs of butterfat over and cumulatively over by 1,196,030 kgs of butterfat. On a percentage basis, Saskatchewan is 8.77% above our CDC allocation flexibility limits based on the Continuous Quota model. The -2.00% lower flexibility limit is in effect.

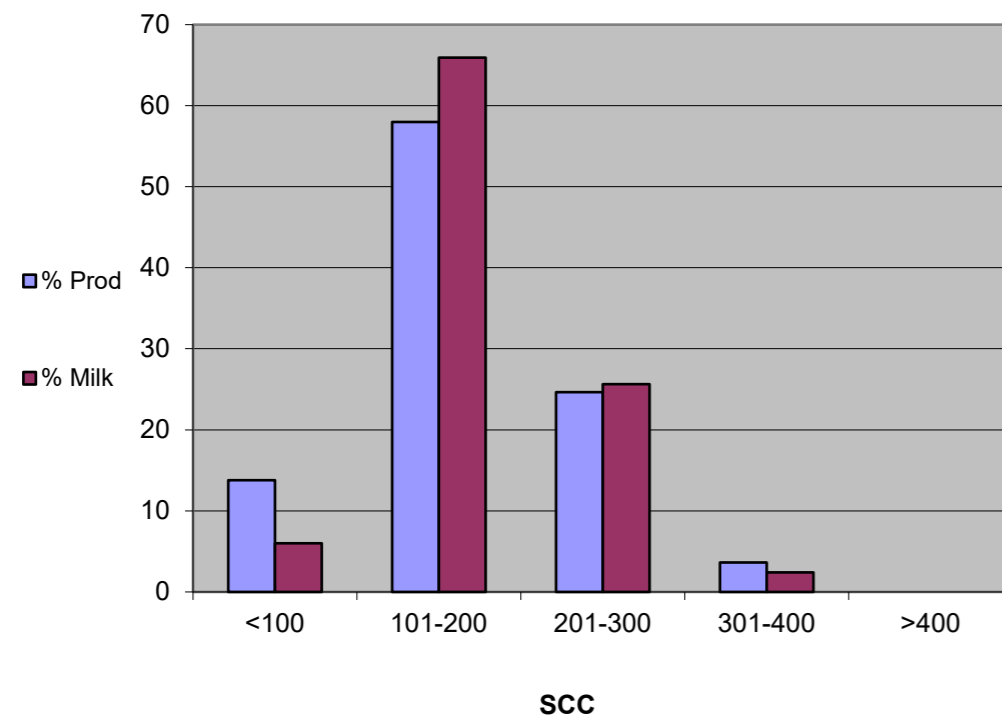
- (1) Monthly Production in Saskatchewan
- (2) Total Monthly Quota = Class 1 sales + Monthly MSQ + Carry Forward
- (3) Difference between the monthly production (1) and the total monthly quota (2)
- (4) The Lower Flexibility Limit is -2.00% of Rolling 12 Month Total Quota (9)
- (5) The Upper Flexibility Limit is 1.25% of Rolling 12 Month Total Quota (9)
- (6) Previous Month Cumulative Over or (Under) Production + Current Monthly Over or (Under) Production (capped at lower or upper limit if applicable)
- (7) Equal to Column (6) expressed as a percentage basis within the flexibility limits
- (8) Total Monthly CDC Quota Allocation for the previous 12 months

# SK Quality Milk

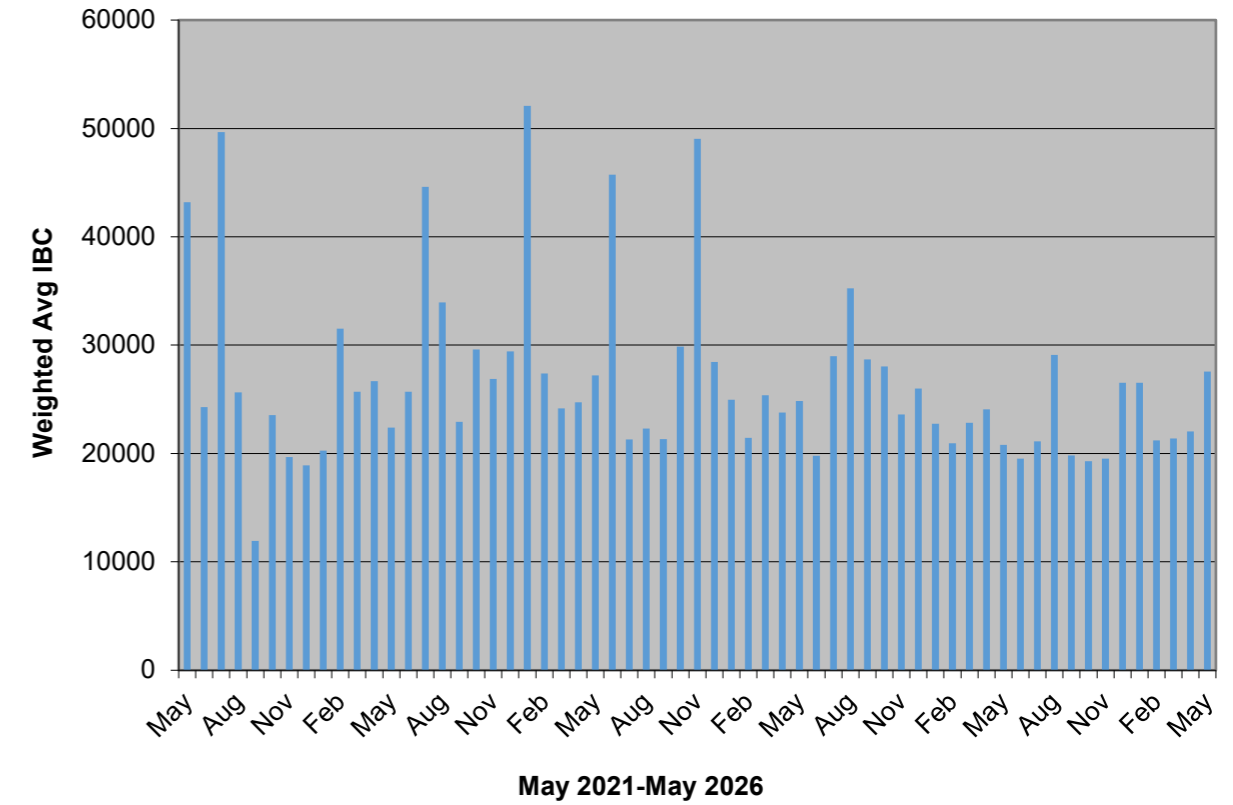
May 2026



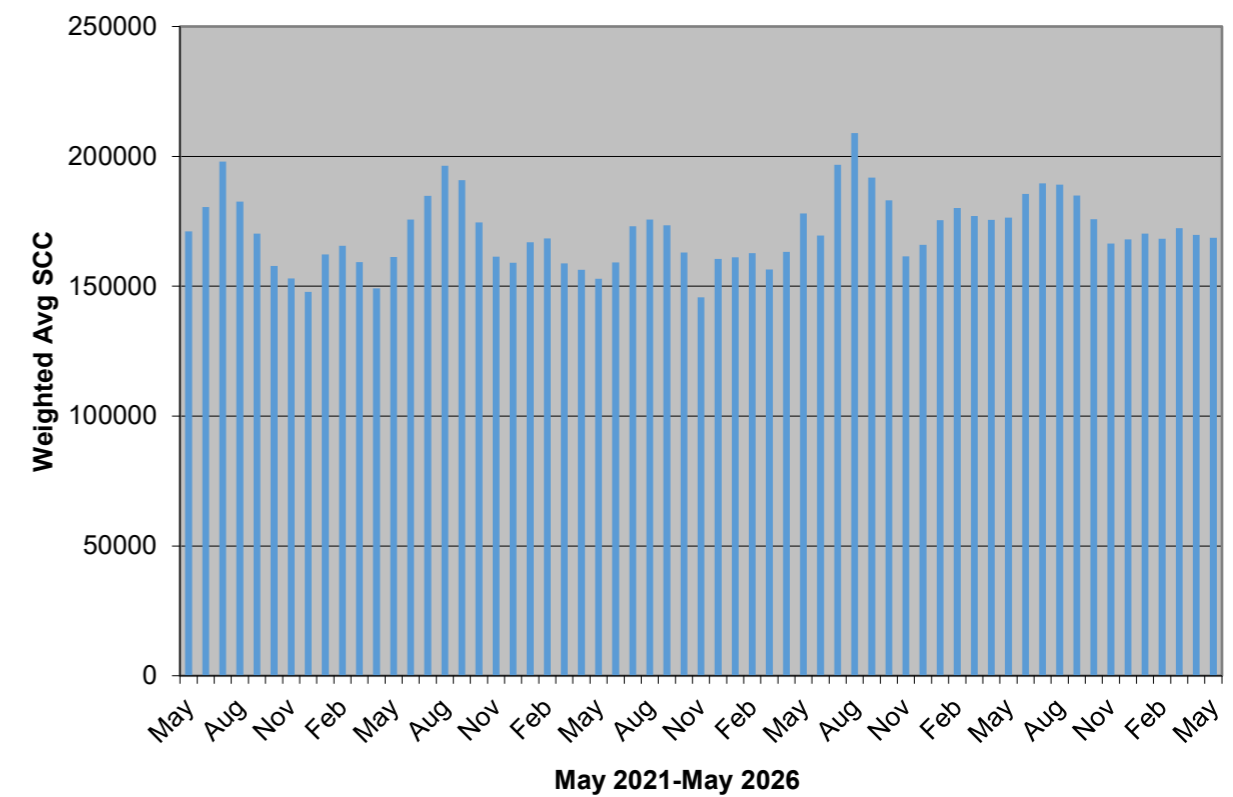
May 2026



Monthly Weighted Average IBC



Monthly Weighted Average SCC





# DFC UPDATE



*In the Community*



Can't make it to this year's AGM?

Dairy Farmers of Canada has an exciting slate of presentations and speakers ready for the 2026 Annual General Meeting. Even if you aren't travelling to Moncton, New Brunswick, to join in person, you can read all about it in can read all about them in the Dairy Express email newsletter.

This farmer-exclusive newsletter will give you in-depth recaps of the panels and discussions, including:

- Supply Management and the International Trade Environment
- The Whole Protein Perspective
- The Buy Canadian Movement
- What's New in proAction
- Why Sustainability Still Matters in the Current Context
- The Price of the Truth - Navigating the Disinformation Minefield with Dr. Timothy Caulfield

The 2026 AGM will not be livestreamed. Sign up for Dairy Express today through the QR code - fill out the form and you will be added to our mailing list!



## SaskMilk Board Activities

**June 15:** Western Canadian Dairy Leadership Summit

**June 17 -** WMP Members Committee (Calgary)

**June 30 -** SMMB Meeting (Saskatoon)

**July 8 -** Secretariat

**July 12-15 -** Dairy Farmers of Canada Annual General Meeting

# Quality Bonus

To get the quality bonus producers must have:  
 Monthly Average:  
 IBC - <= 30,000/ ml  
 SCC- <= 250,000/ml  
 FPt- lower than -0.525°Hortvet  
 No positive inhibitors

## CLASSIFIED ADS

SaskMilk offers a free classifieds service as part of its newsletter. Anyone wishing to place an ad is welcome to contact the SaskMilk office at (306) 949-6999 or info@saskmilk.ca. All negotiations will be independent of SaskMilk. Please note that ads will be posted in two issues and will then be removed unless SaskMilk is notified otherwise.

## SaskMilk Board & General Manager

**Teresa Florizone**  
 General Manager  
 (306) 721-9480  
 Cell: (306) 527-7458  
[teresa.florizone@saskmilk.ca](mailto:teresa.florizone@saskmilk.ca)

**Gordon Ell**  
 Chair  
 (306) 535-1922  
[Gord.Ell@saskmilk.ca](mailto:Gord.Ell@saskmilk.ca)

**Merlis Wiebe**  
 Vice Chair  
 (306) 229-0696  
[Merlis.Wiebe@saskmilk.ca](mailto:Merlis.Wiebe@saskmilk.ca)

**Derek Westeringh**  
 Second Vice Chair  
 (306) 716-1959  
[Derek.Wersteringh@saskmilk.ca](mailto:Derek.Wersteringh@saskmilk.ca)

**Ryan Enns**  
 (306) 220-7993  
[Ryan.Enns@saskmilk.ca](mailto:Ryan.Enns@saskmilk.ca)

**Melvin Foth**  
 (306) 232-3462  
[Mel.Foth@saskmilk.ca](mailto:Mel.Foth@saskmilk.ca)

**Leonard Kleinsasser**  
 (306) 294-7812  
[Leonard.Kleinsasser@saskmilk.ca](mailto:Leonard.Kleinsasser@saskmilk.ca)

**Tymen Vanzessen**  
 (306) 361-7551  
[Tymen.Vanzessen@saskmilk.ca](mailto:Tymen.Vanzessen@saskmilk.ca)

**Reminder!**

The deadline date for Quota Transfer, Quota Exchange, and 10% Transfer Limit Exemptions is the 6th of each month. Your Quota Transfer, and 10% Exemption Applications must be received on or before the 6th of the month in order to be effective the 1st of the following month. Quota Exchange forms must be received in the SaskMilk office on or before the 6th of the month for that month's Exchange.

HUTTERIAN BRETH CHURCH ARM RIVER *****	CARMICHAEL HUTTERIAN COLONY *****	ELL'S DAIRY FARM 2010 INC. ****
CARONCREST FARMS LTD *****	ARTLAND DAIRIES INC *****	HUTTERIAN BRETHREN CHURCH OF SOUTHLAND INC. *****
ENNS FARMS LTD *****	FOTH VENTURES LTD *****	The Hutterian Brethren Church of Riverview Limited *****
HODGEVILLE COLONY *****	EAGLEWOOD HOLDINGS LTD ****	SIERRA HUTTERIAN BRETHREN *****
HILLVALE COLONY ****	HUTTERIAN BRETHREN OF SOVEREIGN INC. **	ROSETOWN FARMING CO. LTD. *****
LAKEVIEW COLONY *****	MARFAY FARMS LIMITED *****	WESTERN DAIRY FARMS (2016) LTD. #2 **
MCAVOY FARMS LTD *	SCOTT COLONY *****	RIVERSIDE DAIRY LTD. *****
MIL-EN-ROY FARMS (1981) LTD ***	KIELSTRA HOLSTEINS INC. *****	ROSTHERN DAIRY FARMS LTD. **
UNIV OF SASK, Animal & Poultry Science *****	EARVIEW COLONY *****	JIMLEE FARMS LTD. *****
HUTTERIAN BRETHREN OF ABBEY *****	DAUM DAIRIES *****	PRAIRIE WEST DAIRIES INC. **
BENCH HUTTERIAN BRETHREN LTD **	LEYENHORST, ALBERT & HEATHER *****	HAVERLAND DAIRY LTD. ****
HUTT. BRETHREN CHURCH OF BOX ELDER *	ROBELLA HOLSTEINS *****	Osler Dairy Farms Ltd. *****
HUTTERIAN BRETHREN CYPRESS COLONY *****	SPRINGBROOK FARMS LTD. *****	COUNTRY HILLS HUTTERIAN BRETHREN INC. ***
HUTTERIAN BRETHREN OF KYLE *****	PLUM BLOSSOM FARM LTD.(SASK) *****	STAR VALLEY FARM JOINT VENTURE *****
SAND LAKE HUTTERIAN BRETHREN *****	KNITTIG FARMS LTD. *****	VANDENBRINK DAIRY LTD. **
SIMMIE HUTTERIAN BRETHREN CHURCH *****	BENBIE HOLSTEINS LIMITED *****	HUTTERIAN BRETHREN CHURCH OF TWIN CREEK INC. ****
SMILEY HUTTERIAN BRETHREN *****	DALVOORDE DAIRIES LTD. *****	LOVHOLM HOLSTEINS *****
HUTTERIAN BRETHREN OF WEST BENCH ****	BALGONIE HOLSTEINS LTD. *****	Sandy Ridge Dairy Ltd. ****
CLEAR SPRING COLONY *****	W.C.C. DAIRIES CORP. *****	FEHR'S RIVERFRONT FARM LTD. *****
HUTTERIAN BRETHREN CHURCH OF QUILL LAKE INC. *****	BRAMVILLE JERSEYS *****	SEPTEMBER SUN ACRES LTD. *****
DOWNIE LAKE CHURCH COLONY *****	KESSEL FAMILY FARM *****	NIENHUIS FAMILY FARM INC. *****
HUTT BRET CHURCH OF SWIFT CURRENT INC ****	CRAILA DAIRY LTD *****	VANZESSEN DAIRY INC. *****
WILLOW PARK COLONY *****	LOEWEN DARCY & ROSALIE *****	HIGHDALE FARMS LTD. *****
BAILDON HUTT BRETHREN INC. *****	DE TIPPE DAIRY ***	SUNNYSIDE DAIRY *****
HUTTERIAN BRETHREN CHURCH OF STAR CITY INC. ***	Grassy Hill Colony *****	TOM & WENDY MUFFORD *****
VANGUARD HUTTERIAN BRETHREN *****	DARIAN FARMS LTD. *****	HUTTERIAN BRETHREN CHURCH OF EAGLE CREEK INC. *****
HUTTERIAN BRETH CHURCH OF BEECHY *****	BERTOHN FARMS LTD. ****	ADIT FARMS INC. ***
HUTTERIAN BRETHREN GOLDEN VIEW INC ***	101115806 SASKATCHEWAN LTD. *****	KEN & KAREN GIESBRECHT *****
HUTTERIAN BRETHREN CHURCH OF LAJORD *****	MCGEE COLONY ***	LAKEVIEW HOLSTEINS LTD. *****
HUTTERIAN BRETH CHURCH SPRINGWATER ***	KENSTAL FARMS INC. ***	HYLJON HOLSTEINS LTD. ****
EATONIA HUTTERIAN BRETHREN INC *****	Q VALLEY FARM LTD. *****	R & F LIVESTOCK INC. ****
MAIN CENTRE DAIRY FARM *****	WALLYWAY FARMS LTD. *****	AURORA DAIRY INC. *****
BROYHILL HOLSTEINS ****	FOX VALLEY FARMING CO. LTD *****	RICHARD VAN DONGEN & LORETTA BERKHOUT-VAN DONGEN ****
HUTTERIAN BRETHREN CHURCH OF SPRING LAKE INC. *****	JBK FARMS LTD. *****	COUNTRY NOVA FARMS LTD *****
CARMICHAEL HUTTERIAN COLONY *****		WESTWIKK FARMS LTD. *****

