



SaskMilk

May 2026

In this Issue:

SaskMilk
Quota
Exchange
Results

SK
Production
Update

Industry
Updates

617

INDUSTRY UPDATES

FOR	CONTACT	AT
Legislation Orders Policies Program Development	Ashley Egyedy	(306) 721-9451
Quota Exchange and Private Quota Transfers Leases Transfer Credits Security Applications Projections for production Name Changes Designation of Signing Authority Monthly production numbers for producers	Bev Solie	(306) 721-9488
Sponsorship Requests Donation Requests Dairyanna's Costume and Events School Milk Program Nutrition Resource Ordering Social media enquiries (Twitter, Instagram, Facebook) Promotional Items	Breann Eberle	(306) 721-9483
Website enquiries Newsletter advertising Sponsorship requests Dairy Conference	Cailyn Jones	(306) 721-9482
Trade agreements, international trade updates Quota Issuance and Production	Chera Coates	(306) 721-9485
On Farm- licensing, facilities, equipment, driveways, yards, animal care Milk pickups, communication of milk pickup delays or issues Milk Transportation Milk Graders- licensing, complaints/issues Bulk tank calibrations Environment and Regulatory	Chris Pinno	(306) 537-2459
Producer statements Banking info for direct deposit of milk pay Milk pick-up issues -variances in volumes, planning to quit shipping, etc. SaskMilk Portal Assistance Dairy Conference	Jenn Buehler	(306) 721-9492
Website inquiries Media or news stories or if you have been contacted by any media agency or reporter	Julie Ell	(306) 721-9493
General Inquiries Portal Support Information on registrations/details on SaskMilk producer events.	Michelle Belanger	(306) 721-9490
On Farm- licensing, facilities, equipment, driveways, yards, animal care Lab testing results Pro Action- Food Safety (CQM), Animal Care, Traceability, Biosecurity, Environment Extension services Research enquires	Tina Leverton	(306) 721-9486

World Milk Day at SaskMilk

You're invited! World Milk Day is just around the corner (June 1, 2026), and we (SaskMilk) are hosting a Hot-dog BBQ and a Build Your Own Sundae to celebrate the day and bring awareness to the importance of milk and dairy with regards to nutrition. The BBQ is taking place at the SaskMilk office on Monday, June 1st from 11:30-1:30 (ish) and is come-and-go style.

We want to invite you and your family/friends to join us that day and get a hotdog, individual milk, and a sundae with all the toppings - the cost is \$10.00! All proceeds raised will be donated back to the Regina Food Bank, so it's a really great cause. Check out the invite attached for details - please feel free to share this with anyone, the more people in attendance, the better. **See ad on page 14.**

HPAI Biosecurity Reminder

As migratory birds return to Saskatchewan, SaskMilk is reminding producers of the importance of maintaining strong biosecurity practices to prevent Highly Pathogenic Avian Influenza (HPAI). The risk of HPAI in dairy cattle in Canada remains low, and no cases have been detected in dairy cattle in Canada to date. However, HPAI continues to affect bird flocks across the country. Maintaining effective biosecurity measures remains the best line of defence against HPAI.

Reminder: New Housing Requirements

DFC has finalized new requirements for the housing of calves, dry cattle, and lactating cattle in the proAction Animal Care module.

The new requirements align with recent updates to the Code of Practice for the Care and Handling of Dairy Cattle, and will be part of on-farm validations starting in April 2027.

Learn more about the new requirements by reading the **fact sheets on pages 12-13.**

SASKATCHEWAN MILK POOL RESULTS APRIL 2026		WEIGHTED AVERAGE COMPONENT TESTS & PRICES APRIL 2026	
Milk Sale Revenue	\$25,308,397.19	COMPONENTS	AVERAGE TEST
WMP Revenue/<Expense>	\$(1,432,735.88)	Butterfat	4.4442
Total Revenue	\$23,875,661.31	Protein	3.4153
		Other Solids	5.9389
		PRICE PER KILOGRAM CLASS 1 TO 5	
		Butterfat	\$15.325834
		Protein	\$7.122364
		Other Solids	\$0.819180

The average butterfat price received per kilogram was \$21.89

MAY 2026

QUOTA EXCHANGE

The market-clearing price established for the May 2026 Quota Exchange was \$45,250.00

The next Quota Exchange will be held on May 15, 2026. All offers to sell and bids to purchase quota through the Quota Exchange must be submitted by midnight, May 6, 2026. SaskMilk recommends that offers and bids be submitted well in advance of the deadline date to ensure adequate time for corrections, if necessary.

When making bids on the Quota Exchange, the price on offers to sell quota is the minimum price that the producer is prepared to accept for that quota. Only if the market-clearing price is equal to or greater than the producer's minimum price will that producer qualify for participation in the Exchange.

Conversely, the price on offers to purchase quota is the maximum price that the producer is prepared to pay for that quota. Only if the market-clearing price is equal to or less than the producer's maximum price will that producer qualify for participation in the Exchange.

The clearing price is set at the price where the smallest difference exists between the accumulated volume offered for sale and the accumulated volume bid to purchase. The results of the Quota Exchange are outlined in the following table.

MAY 2026 QUOTA EXCHANGE RESULTS

Market Clearing Price per kilogram of butterfat	\$45,250.00
Daily Kilograms offered to Purchase	117.00
Kilograms offered to Sell	71.06
Kilograms sold	41.06
Number of Producers	
- offered to purchase	15
- purchased quota	6
- offered to sell	10
- sold quota	7

QUOTA EXCHANGE CLEARING PRICE RESULTS

Price (\$/daily kg b.f.)	No. of Sellers	Cumulative sellers	Daily Kgs b.f. offered for sale	Cumulative sales	Cumulative Sales less Cumulative purchases	Cumulative purchases	Daily Kgs b.f. offered to purchase	Cumulative bidders	No. of buyers
\$39,729.60	2	2	0.46	0.46	-116.54	117.00	0.00	15	0
\$42,000.00	1	3	0.60	1.06	-115.94	117.00	0.00	15	0
\$42,100.00	0	3	0.00	1.06	-115.94	117.00	10.00	15	1
\$42,510.00	0	3	0.00	1.06	-105.94	107.00	10.00	14	1
\$42,890.00	0	3	0.00	1.06	-95.94	97.00	10.00	13	1
\$42,995.00	0	3	0.00	1.06	-85.94	87.00	10.00	12	1
\$43,021.00	0	3	0.00	1.06	-75.94	77.00	10.00	11	1
\$43,047.00	0	3	0.00	1.06	-65.94	67.00	10.00	10	1
\$43,500.00	1	4	10.00	11.06	-45.94	57.00	0.00	9	0
\$44,000.00	1	5	10.00	21.06	-35.94	57.00	0.00	9	0
\$44,500.00	1	6	10.00	31.06	-25.94	57.00	5.00	9	1
\$45,000.00	1	7	10.00	41.06	-10.94	52.00	7.00	8	2
\$45,250.00	0	7	0.00	41.06	-3.94	45.00	10.00	6	1
\$45,350.00	0	7	0.00	41.06	6.06	35.00	10.00	5	1
\$45,500.00	1	8	10.00	51.06	26.06	25.00	0.00	4	0
\$45,751.00	0	8	0.00	51.06	26.06	25.00	10.00	4	1
\$46,000.00	1	9	10.00	61.06	46.06	15.00	12.00	3	2
\$46,100.00	0	9	0.00	61.06	58.06	3.00	3.00	1	1
\$47,500.00	1	10	10.00	71.06	71.06	0.00	0.00	0	0

Please contact Bev Solie at 306-949-6999 for inquiries dealing with quota management sheets, the Quota Exchange, for transfer credits, or with any other quota transactions.

LOST OPPORTUNITY REPORT		
MONTH	# OF PRODUCERS	LOST OPPORTUNITY (KGS OF BUTTERFAT)
April 2025	2	350
May 2025	3	521
June 2025	1	121
July 2025	1	209
August 2025	1	54
September 2025	1	655
October 2025	12	488
November 2025	2	217
December 2025	2	404
January 2026	3	614
February 2026	2	142
March 2026	1	161
April 2026	1	21

TRANSFER CREDIT SUMMARY REPORT			
MONTH	# OF PRODUCERS TRANSFER IN	# OF PRODUCERS TRANSFER OUT	TOTAL KGS OF BUTTERFAT
April 2025	10	10	6,693.00
May 2025	17	17	14,624.00
June 2025	17	17	14,523.00
July 2025	24	24	21,814.00
August 2025	29	29	46,008.00
September 2025	24	24	27,690.00
October 2025	33	33	36,484.00
November 2025	30	31	31,435.00
December 2025	14	14	8,421.00
January 2026	21	21	18,275.00
February 2026	18	18	17,301.00
March 2026	17	17	13,091.00
April 2026	8	8	7,430.00

PRIVATE TRANSFERS PROCESSED	
MONTH	DAILY KILOGRAMS
April 2025	0.90
May 2025	0.00
June 2025	0.00
July 2025	0.00
August 2025	0.00
September 2025	14.30
October 2025	0.00
November 2025	0.00
December 2025	0.00
January 2026	0.00
February 2026	0.00
March 2026	0.00
April 2026	0.00

OVER QUOTA (OVER 5 DAYS) REPORT BY MONTH		
MONTH	# OF PRODUCERS	KGS BUTTERFAT
April 2025	1	16
May 2025	1	7
June 2025	1	15
July 2025	0	0
August 2025	1	44
September 2025	5	97
October 2025	3	102
November 2025	8	1,103
December 2025	4	1,700
January 2026	8	884
February 2026	10	1,166
March 2026	10	758
April 2026	11	575

SUMMARY REPORT OF CREDITS - 139 PRODUCERS		
DAYS	# OF PRODUCERS	POSITIVE CREDITS ACCUMULATED (KGS OF BUTTERFAT)
+ 5	11	9,947.80
0 to + 5	72	51,481.15
TOTAL	83	61,428.95
DAYS	# OF PRODUCERS	NEGATIVE CREDITS ACCUMULATED (KGS OF BUTTERFAT)
0 to -5	32	-20,295.33
-5 to -10	18	-24,413.32
-10 to -15	5	-11,124.70
-15	1	-407.10
TOTAL	56	-56,240.44

Test stations are located at the following locations:			
Location	Address	Hours	Contact
Saputo	122 Wakooma Street, Saskatoon, SK	Monday to Friday 8:00 am - 4:00 pm	N/A
Warman Veterinary Services	86 Great Plains Rd, 100A Crystal Springs Dr, Warman SK	After Hours	Ph: 306-347-9995
Star City Colony		After Hours	Ruben Tschetter Ph: 306-921-9381

SK Production Update

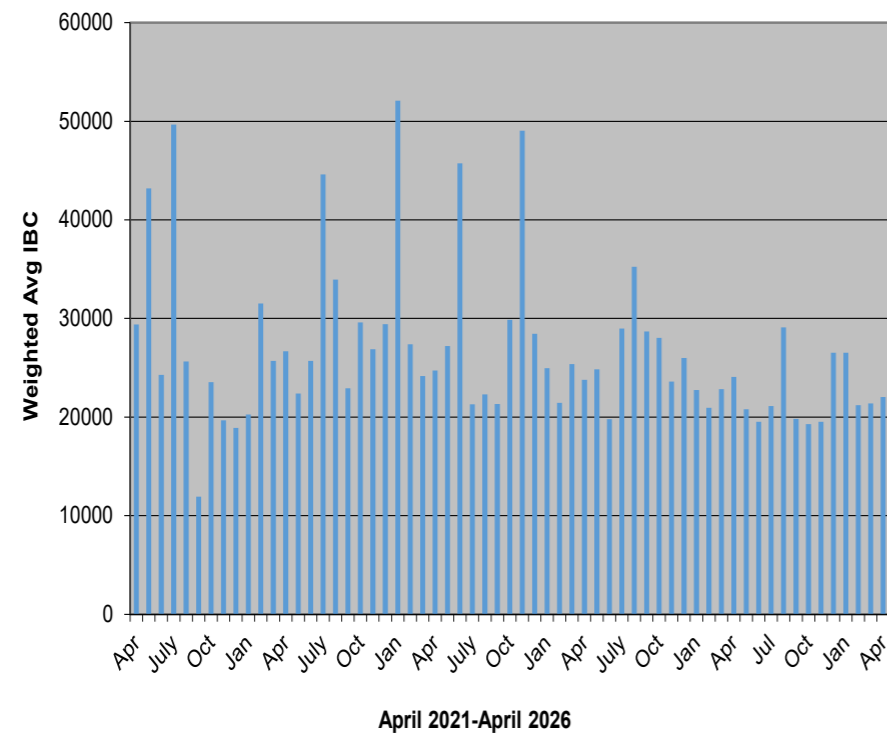
	(1) Monthly Total Production Kgs of bf	(2) Total Monthly CDC Quota Allocation Kgs bf	(3) Monthly Over or (Under) Production Kgs bf col. 1 - 2 = 3	(4) Lower Flexibility Limit -2.00% Kgs bf col. 8 * -1.5%	(5) Upper Flexibility Limit 1.25% Kgs bf col. 8 *1.0%	(6) Cumulative Over or (Under) Production with limits Kgs bf	(7) Cumulative Over or (Under) Production with limits (%) col. 6 / 8	(8) Rolling 12 Month Total Quota Kgs bf
Mar-25	1,163,400	1,133,584	29,816	-259,844	162,402	1,125,980	8.67%	12,992,190
Apr-25	1,130,896	1,095,871	88,427	-259,863	162,414	1,214,407	9.35%	12,993,136
May-25	1,149,773	1,197,497	(47,724)	-263,634	164,771	1,113,464	8.45%	13,181,719
Jun-25	1,112,264	1,012,081	100,183	-263,400	164,625	1,213,647	9.22%	13,170,000
Jul-25	1,158,182	1,011,808	146,374	-262,944	164,340	1,360,021	10.34%	13,147,185
Aug-25	1,165,184	1,154,985	10,199	-266,231	166,394	1,220,969	9.17%	13,311,549
Sep-25	1,136,548	1,194,114	(57,566)	-267,713	167,321	1,163,403	8.69%	13,385,673
Oct-25	1,185,500	1,205,883	(20,383)	-267,293	167,058	1,143,020	8.55%	13,364,644
Nov-25	1,145,433	1,199,932	(54,499)	-269,200	168,250	1,088,521	8.09%	13,460,010
Dec-25	1,171,770	1,143,106	28,664	-269,771	168,607	1,117,185	8.28%	13,488,525
Jan-26	1,164,659	1,019,560	145,099	-269,120	168,200	1,262,284	9.38%	13,455,981
Feb-26	1,045,416	1,044,562	854	-271,245	169,528	1,263,138	9.31%	13,562,234
Mar-26	1,139,140	1,042,469	96,671	-269,422	168,389	1,359,809	10.09%	13,471,119

In March, Saskatchewan had a monthly CDC allocation of 1,044,562 kilograms of butterfat. Saskatchewan production was 96,671 kgs of butterfat over and cumulatively over by 1,359,809 kgs of butterfat. On a percentage basis, Saskatchewan is 10.09% above our CDC allocation flexibility limits based on the Continuous Quota model. The -2.00% lower flexibility limit is in effect.

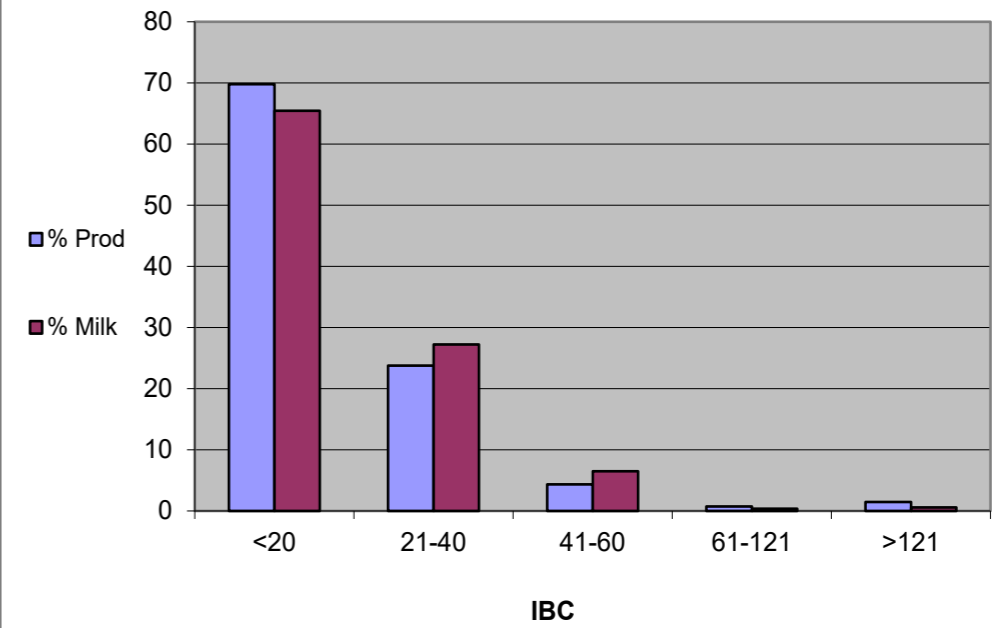
- (1) Monthly Production in Saskatchewan
- (2) Total Monthly Quota = Class 1 sales + Monthly MSQ + Carry Forward
- (3) Difference between the monthly production (1) and the total monthly quota (2)
- (4) The Lower Flexibility Limit is -2.00% of Rolling 12 Month Total Quota (9)
- (5) The Upper Flexibility Limit is 1.25% of Rolling 12 Month Total Quota (9)
- (6) Previous Month Cumulative Over or (Under) Production + Current Monthly Over or (Under) Production (capped at lower or upper limit if applicable)
- (7) Equal to Column (6) expressed as a percentage basis within the flexibility limits
- (8) Total Monthly CDC Quota Allocation for the previous 12 months

SK Quality Milk

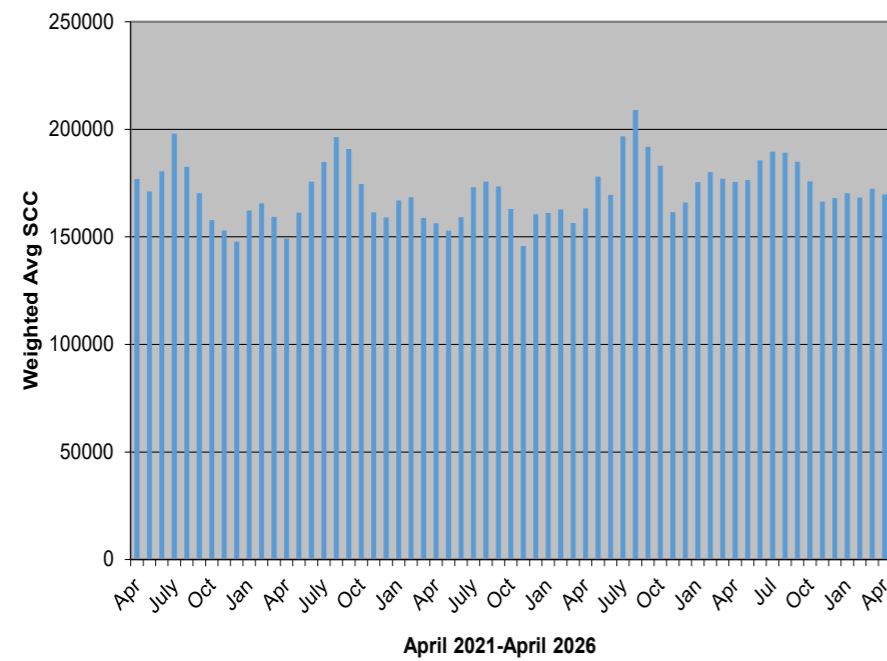
Monthly Weighted Average IBC



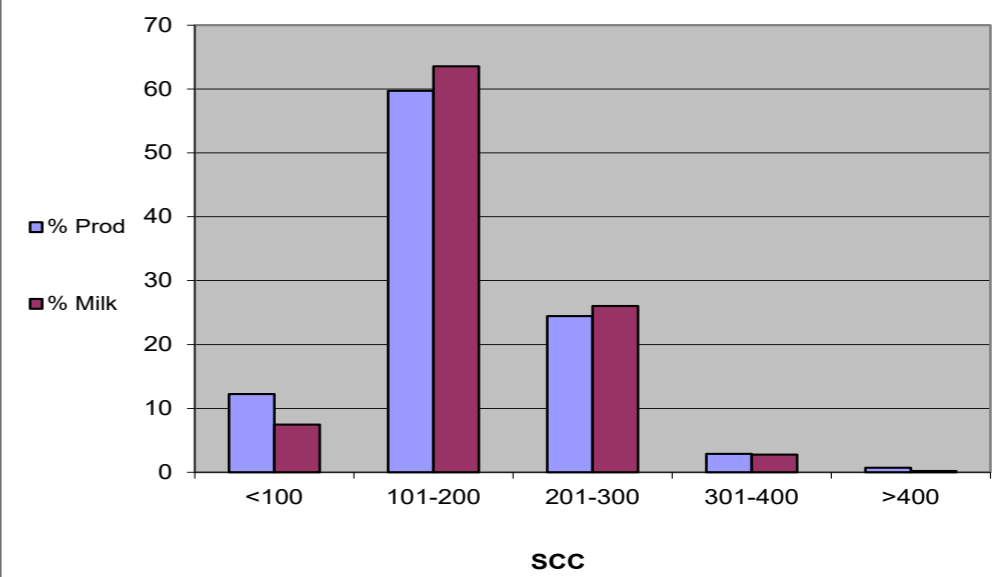
April 2026



Monthly Weighted Average SCC



April 2026



Unweaned Calf Housing



New Requirements for Calf Housing

Dairy Farmers of Canada (DFC) has finalized new requirements for calf housing in the proAction® Animal Care module to align with recent updates to the Code of Practice for the Care and Handling of Dairy Cattle (March 2023). As part of the process, DFC and provincial farmer organizations tested the requirements on a sample of farms across Canada. Farmers and other participants shared valuable feedback that shaped the final requirements.



Scan to visit the code on the NFACC website



The new requirements will be part of on-farm validations starting in April 2027, along with the full package of updates related to the Code of Practice.

What are the Requirements?

Requirements that apply to ANY housing for unweaned calves:



All calf housing must be designed and maintained in good condition to minimize injury and lameness.



Calves must be able to have visual contact with other cattle, stand up, lie down, turn completely around, stand fully upright without touching the top of the enclosure, adopt both sternal and lateral resting postures, and they must also be able to groom themselves.



Calves must have a resting surface with enough bedding to achieve insulation, dryness, comfort, traction, and cleanliness.



Housing must provide fresh air and prevent the buildup of harmful gases, dust and moisture, and reduce the risk of heat and cold stress.

When calves are group housed, the bedded area must be sufficient for all calves to lie down at the same time.

Calves must be able to have visual contact with other cattle, recognizing that cattle are herd animals and can become stressed when housed alone without visual stimulation. During extreme weather it is acceptable to temporarily block hutch doors for 3–5 days to protect calves, but additional monitoring is required.

Why is proAction requiring this?

The revisions strengthen the calf housing requirements in two important areas: social contact and comfort.

- Current scientific evidence demonstrates the health and welfare benefits of these new calf housing requirements.
- proAction has updated its requirements to align with the Code of Practice for the Care and Handling of Dairy Cattle.

Definitions

Indoor housing is defined as housing that involves a roofed structure with four closable sides. Any calf hutches located under such a structure are considered indoor housed and must follow the indoor housing requirements.

Outdoor housing is defined as housing that does not involve a roofed structure with four closable sides. Hutches located under a roofed structure with less than four closable sides are considered outdoor housed and must follow the outdoor housing requirements.

Additional Requirements

Additional requirements specific to INDOOR housing for unweaned calves:



For indoor-housed calves, tethering is not permitted.



Farmers who do not already pair- or group-house calves must develop a plan to transition calves into pair- or group-housing by 2031.

Additional requirements specific to OUTDOOR housing for unweaned calves:



For outdoor-housed calves, tethering is permitted, but calves must be able to have physical contact with other calves, have access to an area out of the hutch, and have a collar.

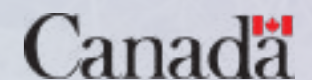
What Does This Look Like On-Farm?

Pairing or grouping should be done with calves of similar size and age, and farms are encouraged to use an "all-in/all-out" group management system to reduce disease transmission. Housing areas should be cleaned and disinfected between groups. There are temporary exceptions for calves that are not healthy or thriving, for situations where separating a calf benefits recovery, or when compatible group mates are not available. For those farms not already pairing or grouping calves, farmers should work with their advisors to develop transition plans applicable for their specific facilities, conditions and management styles.

For outdoor-housed calves, tethering remains an acceptable option only when calves have access to sufficient outdoor space, such that their entire body can be outside the hutch; a small opening that allows only the head and neck out is not acceptable. Collars must be appropriate and must not be made from chain, wire, or baler twine. Buddy hutches may be used but calves must have access to an area outside the hutch. Outdoor-housed calves must always have the opportunity for nose-to-nose physical contact with other calves at minimum, although temporary separation is permitted when necessary for health, safety, or protection from severe weather. Other temporary housing adjustments can be made during inclement weather conditions to protect calves (e.g. moving calf hutches into a coverall barn) without indoor housing requirements applying.



For additional information on these requirements, contact your Provincial Coordinator.



Dry and lactating cattle housing fact sheet can be viewed [HERE](#)

YOU'RE INVITED!
CELEBRATE
WORLD MILK DAY

Sask**milk**
**HOTDOG
BBQ**



DATE:
JUNE 1



TIME:
11:30 AM - 1:30 PM
(come-and-go!)



LOCATION:
SASKMILK OFFICE
(street & lot parking available)

Enjoy all this for just

\$10



BBQ Hotdog
with all the toppings



Individual Milk
(white or chocolate)



Sundae Bar
with lots of fun toppings

All proceeds will go to the

**REGINA
FOOD BANK**



This is an outdoor event - rain | shine | wind, please dress for the weather.

Bring your coworkers, friends, family, and an appetite.
Come celebrate World Milk Day with SaskMilk!

**HAPPY WORLD
MILK DAY**
EVERY MORNING NEEDS A HERO



Quality Bonus

To get the quality bonus producers must have:
 Monthly Average:
 IBC - <= 30,000/ ml
 SCC- <= 250,000/ml
 FPt- lower than -0.525°Hortvet
 No positive inhibitors

CLASSIFIED ADS

SaskMilk offers a free classifieds service as part of its newsletter. Anyone wishing to place an ad is welcome to contact the SaskMilk office at (306) 949-6999 or info@saskmilk.ca. All negotiations will be independent of SaskMilk. Please note that ads will be posted in two issues and will then be removed unless SaskMilk is notified otherwise.

SaskMilk Board & General Manager

Teresa Florizone
 General Manager
 (306) 721-9480
 Cell: (306) 527-7458
teresa.florizone@saskmilk.ca

Gordon Ell
 Chair
 (306) 535-1922
Gord.Ell@saskmilk.ca

Merlis Wiebe
 Vice Chair
 (306) 229-0696
Merlis.Wiebe@saskmilk.ca

Derek Westeringh
 Second Vice Chair
 (306) 716-1959
Derek.Wersteringh@saskmilk.ca

Ryan Enns
 (306) 220-7993
Ryan.Enns@saskmilk.ca

Melvin Foth
 (306) 232-3462
Mel.Foth@saskmilk.ca

Leonard Kleinsasser
 (306) 294-7812
Leonard.Kleinsasser@saskmilk.ca

Tymen Vanzessen
 (306) 361-7551
Tymen.Vanzessen@saskmilk.ca

Reminder!

The deadline date for Quota Transfer, Quota Exchange, and 10% Transfer Limit Exemptions is the 6th of each month. Your Quota Transfer, and 10% Exemption Applications must be received on or before the 6th of the month in order to be effective the 1st of the following month. Quota Exchange forms must be received in the SaskMilk office on or before the 6th of the month for that month's Exchange.



HUTTERIAN BRETH CHURCH ARM RIVER ****	FOTH VENTURES LTD ****	JBK FARMS LTD. ****
CARONCREST FARMS LTD ****	EAGLEWOOD HOLDINGS LTD ***	HUTTERIAN BRETHERN CHURCH OF SOUTH-LAND INC. ****
ENNS FARMS LTD ****	HUTTERIAN BRETHERN OF SOVEREIGN INC. *	The Hutterian Brethren Church of Riverview Limited ****
HODGEVILLE COLONY ****	MARFAY FARMS LIMITED ****	SIERRA HUTTERIAN BRETHERN ****
LAKEVIEW COLONY ****	SCOTT COLONY ****	KENBERT ACRES ***
UNIV OF SASK, Animal & Poultry Science ****	KIELSTRA HOLSTEINS INC. ****	ROSETOWN FARMING CO. LTD. ****
HUTTERIAN BRETHERN OF ABBEY ****	EARVIEW COLONY ****	WESTERN DAIRY FARMS (2016) LTD. #2 *
HUTTERIAN BRETHERN CYPRESS COLONY ****	DAUM DAIRIES ****	WESTERN DAIRY FARMS (2016) LTD. #1 ***
HUTTERIAN BRETHERN OF ESTUARY CORP. ****	DALKIM HOLSTEINS LTD. ***	RIVERSIDE DAIRY LTD. ****
HUTTERIAN BRETHERN OF KYLE ****	BARMOOR FARMS LTD. ****	JIMLEE FARMS LTD. ****
HUTTERIAN BRETHERN CHURCH PONTEIX ****	LEYENHORST, ALBERT & HEATHER ****	RIVER VALLEY HOLSTEINS LTD. ****
SAND LAKE HUTTERIAN BRETHERN ****	ROBELLA HOLSTEINS ****	PRAIRIE WEST DAIRIES INC. *
SIMMIE HUTTERIAN BRETHERN CHURCH ****	SPRINGBROOK FARMS LTD. ****	HAVERLAND DAIRY LTD. ***
SMILEY HUTTERIAN BRETHERN ****	PLUM BLOSSOM FARM LTD.(SASK) ****	Osler Dairy Farms Ltd. ****
WALDECK HUTTERIAN BRETHERN ***	CHRIS-ADIE HOLSTEINS LTD. **	COUNTRY HILLS HUTTERIAN BRETHERN INC. **
CLEAR SPRING COLONY ****	KNITTIG FARMS LTD. ****	STAR VALLEY FARM JOINT VENTURE ****
HUTTERIAN BRETHERN CHURCH OF QUILL LAKE INC. ****	BENBIE HOLSTEINS LIMITED ****	VANDENBRINK DAIRY LTD. *
DOWNIE LAKE CHURCH COLONY ****	DALVOORDE DAIRIES LTD. ****	LOVHOLM HOLSTEINS ****
SCHAEFFER, RONALD J **	BALGONIE HOLSTEINS LTD. ****	FEHR'S RIVERFRONT FARM LTD. ****
HUTTERIAN BRETHERN OF DINSMORE ****	HUTTERIAN BRETHERN OF PENNANT INC. ****	SEPTEMBER SUN ACRES LTD. ****
WILLOW PARK COLONY ****	W.C.C. DAIRIES CORP. ****	NIENHUIS FAMILY FARM INC. ****
BAILDON HUTT BRETHERN INC. ****	BRAMVILLE JERSEYS ****	VANZESSEN DAIRY INC. ****
HUTTERIAN BRETHERN CHURCH OF STAR CITY INC. **	KESSEL FAMILY FARM ****	HIGHDALE FARMS LTD. ****
VANGUARD HUTTERIAN BRETHERN ****	HUTTERIAN BRETHERN OF MILDEN INC. **	SUNNYSIDE DAIRY ****
HUTTERIAN BRETHERN CHURCH OF BEECHY ****	CRAILA DAIRY LTD ****	TOM & WENDY MUFFORD ****
HUTTERIAN BRETHERN GOLDEN VIEW INC **	LOEWEN DARCY & ROSALIE ****	102091087 SASKATCHEWAN LTD. ***
HUTTERIAN BRETHERN CHURCH OF LAJORD ****	DE TIPPE DAIRY **	HUTTERIAN BRETHERN CHURCH OF EAGLE CREEK INC. ****
EATONIA HUTTERIAN BRETHERN INC ****	Grassy Hill Colony ****	KEN & KAREN GIESBRECHT ****
WHEATLAND HUTT BRET OF CABRI INC ****	DARIAN FARMS LTD. ****	LAKEVIEW HOLSTEINS LTD. ****
MAIN CENTRE DAIRY FARM ****	BERTOHN FARMS LTD. ***	RYDALL LIVESTOCK LTD. ****
HUTTERIAN BRETHERN CHURCH OF SPRING LAKE INC. ****	101115806 SASKATCHEWAN LTD. ****	HYLJON HOLSTEINS LTD. ***
CARMICHAEL HUTTERIAN COLONY ****	Q VALLEY FARM LTD. ****	R & F LIVESTOCK INC. ***
ARTLAND DAIRIES INC ****	WALLYWAY FARMS LTD. ****	AURORA DAIRY INC. ****
BUTTE COLONY ****	FOX VALLEY FARMING CO. LTD ****	RICHARD VAN DONGEN & LORETTA BERKHOUT-VAN DONGEN ***
		COUNTRY NOVA FARMS LTD ****
		WESTWIKK FARMS LTD. ****

*represent # of months the quality bonus has been received