

SaskMilk Summer Donations

In this Issue:

Promo Events.....	3
From DFC.....	4
Enviro Farm Plans	5
Code of Practice.....	6
Who Should I Call? ..	9
Quota Exchange.....	10
Production.....	13
SCC/IBC.....	14
Clean Farms Ad	16
Classifieds.....	17
Directors	17

This summer, on behalf of Saskatchewan's dairy farmers, SaskMilk has again made donations to the Regina Food Bank and Saskatoon Food Bank, as well as to several other organizations across the province. With school milk programs on hiatus until the fall, this is an ideal time for donations due to the heightened need for milk and its nutritional benefits.

The donations have allowed the food banks an opportunity to offer milk to more clients in a greater quantity. This has already had a great impact on the families who rely on the food banks. Shauna Morrison, Communications Coordinator at the Saskatoon Food Bank, shared a story of a mother who is planning her family meals to include milk now that she has a steady supply for herself and her children, something that isn't always guaranteed.

Other donation recipients are Souls Harbour Rescue Mission, Carmichael Outreach, The Lighthouse Supported Living and the Friendship Inn. Each organization expressed their gratitude to dairy farmers in Saskatchewan as there is an ongoing need for milk in every food program and soup kitchen.

Below: The Saskatoon Food Bank Press Conference highlighting SaskMilk's donation, featured on Global News



Left: Mel Foth at the Friendship Inn
Below: Blaine Mcleod at Carmichael Outreach



SaskMilk in the Community...



SaskMilk Graduate Scholarship



Katarzyna
BURAKOWSKA

Katarzyna Burakowska, this year's recipient of the SaskMilk Graduate Scholarship, is a PhD candidate in the Animal and Poultry Science Department at the University of Saskatchewan. Her project concentrates on dairy calf nutrition with a focus on utilization of canola meal in starter mixtures.

We congratulate her on the acceptance of the SaskMilk Graduate Scholarship and wish her well in her future ventures in the dairy industry!

*SaskMilk Upcoming Promotional Events**

*(*we are participating in or have sponsored)*

August 1 - 5	Queen City Exhibition – Regina
August 3 – 5	Rib Fest – Saskatoon
August 7 – 12	Saskatoon Exhibition – Saskatoon
August 22	Diabetes Canada - New North Central Community – Regina
August 31 – Sept 1	Shake the Lake Music Festival - Regina
September 5 - 19	YX Eats – Saskatoon
September 12	FCC Food Influencer RD Tour, Partnership with DFC - Saskatoon
September 15	Cultural Connections 'India Night' - Regina
September 21 – 22	Premiere Wine Show – Saskatoon
September 27 & 28	Saskatchewan Home Economics Teachers Association (SHETA) & Association of Saskatchewan Home Economists (ASHE)
October 5	Regina Teachers Conference - Regina
November 19 – 24	Agribition – Regina

From DFC this month...

Celebrating a Successful AGM



DFC President Pierre Lampron opens the 2018 AGM with the President's Address

Dairy Farmers of Canada (DFC) kicked off this year's AGM with a welcome message via video from Prime Minister Justin Trudeau in which he stated his belief that the continued prosperity of Canada's dairy farmers helps Canadians benefit from high-quality, nutritious and safe food. The Prime Minister also said that supply management provides a fair-price for farmers, stability for processors, and high-quality dairy products at an affordable price for consumers. The remarks concluded with a pledge to protect and defend supply management during the NAFTA negotiations.

The 2 days in Quebec City included Quebec MPs representing all three major parties attending the President's reception, the publishing of DFC's annual report, available at <https://www.dairyfarmers.ca/news-centre/document-library/annual-report>, and a number of guest speakers presented including: Pierrette Desrosiers, Occupational Psychologist, David Coletto, CEO of Abacus Data, Simon Dupuis of IPSOS, Alexandre Lazier of Bioenterprise Corporation Canada, Dr. Sievenpiper from the University of Toronto and Dr. Holloway from McMaster University.

Pierrette Desrosiers presented on the topic of mental health, educating attendees in a humorous and empathetic fashion about how to recognize when someone is in distress, and what you can do. David Coletto presented on the topic of millennials. Simon Dupuis presented consumption trends and barriers to consumption of milk and cheese based on an online study conducted for DFC. Alexandre Lazier shed some light on the future of proteins and discussed how options for proteins are increasingly divers and over time innovations will increase adoptions. Dr. Sievenpiper kicked off the nutrition discussion by looking at the relationship of saturated fat, sugar, and sodium to chronic disease and how dairy contributes – which was, in many cases, shown to be neutral to positive. Following Dr. Sievenpiper, Dr. Holloway shared the links between diet, muscle mass, and chronic disease.

Keynote speaker David Coletto wowed attendees with his segment "Who are Millennials". Coletto highlighted the opportunity for the dairy industry to engage and connect with millennials by creating experiences as millennials value food and view themselves as "foodies". As millennials ask many questions, want to know where their food comes from, and with the value they place on authenticity, it is critical that dairy farmers continue to tell the story of their shared values in an honest way.

Several presentations from the AGM are available on the DFC website:

<https://www.dairyfarmers.ca/news-centre/events/dairy-farmers-of-canada-annual-general-meeting>

DFC would like to thank all those who attended and contributed to the success of this year's AGM.

ENVIRONMENTAL FARM PLANS (EFPs) WORKSHOPS

By the end of 2018 all dairy producers in Saskatchewan are required to have an up-to-date Environmental Farm Plan (EFP) for their operation. In the past, the EFP program was delivered in a workshop format, however Saskatchewan Ministry of Agriculture has changed to an online portal available at www.saskatchewan.ca/EFP.

To make it easier to for producers to complete their plans by the end of 2018, SaskMilk organized a number of one-day workshops that covered how to use the portal and walked through an example dairy farm. The attendance has been good at these workshops and producers are encouraged to continue to work on completing their EFP's.

If you have questions or issues as you work on your EFP you can call Leah at 306-291-7499 or Teddi at 306-291-8045 or email them at dairyefp@gmail.com

Dates have not yet been determined but more workshops will be scheduled for late fall.

Reminder!

The deadline date for Quota Transfer, Quota Exchange, and 10% Transfer Limit Exemptions is the 6th of each month

Your Quota Transfer, and 10% Exemption Applications must be received on or before the 6th of the month in order to be effective the 1st of the following month

Quota Exchange forms must be received in the SaskMilk office on or before the 6th of the month for that month's Exchange

Code of Practice

2.1 Body Condition Scoring

Body condition scoring (BCS) is a tool for determining if an animal is too thin, too fat or in ideal condition. Ideal BCS is a range and will vary depending upon stage of lactation (25). Appendix E - Body Condition Scoring Chart, provides information to assess BCS. Evaluators can assign quarter or half scores for animals that fall between two BCS units. For the purposes of this Code, all Body Condition Scores refer to the scale shown in Appendix E.

Cows should be at an ideal BCS at dry off and should be fed to maintain this condition until calving. Post calving (calving to 120 days) cows can be expected to lose 0.5 to 1 unit of BCS. Cows should not lose more than 1 BCS at any time. BCS should remain constant or begin to increase during mid-lactation. During late lactation cows should gain back the BCS lost during the post-calving period (22).

Cows that are too fat at calving ($BCS > 4$) are more prone to reproductive and metabolic diseases (e.g., difficult calving, retained placenta, cystic ovaries, uterine infections, ketosis, displaced abomasum, milk fever). Cows that are too thin at calving ($BCS < 3.25$) may not have sufficient body reserves to support high levels of milk production. Cows that lose more than 1 BCS experience reduced fertility, particularly if the loss is too rapid (22).

REQUIREMENTS

Producers must take corrective action for animals at a BCS 2 or lower.

RECOMMENDED BEST PRACTICES

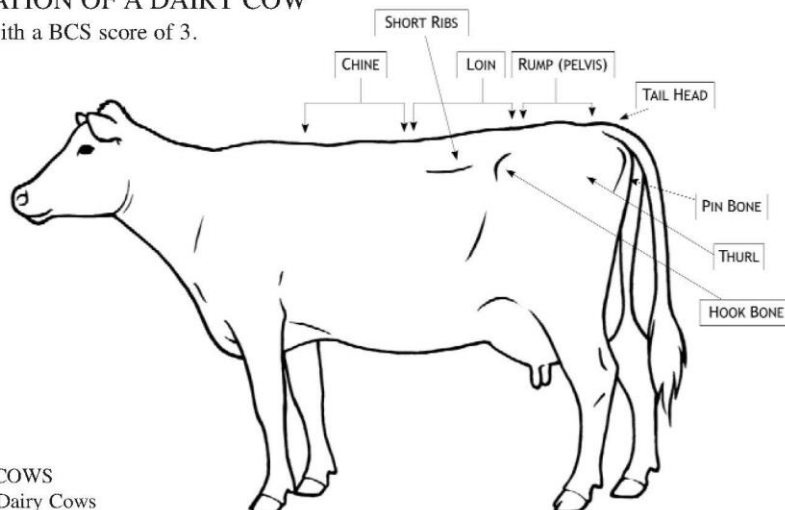
- a. use Appendix E - Body Condition Scoring Chart to regularly assess the BCS's of cows
- b. aim for the following ideal BCS ranges:
 - dry off, 3.25 to 3.75
 - calving, 3.25 to 3.75
 - early lactation, 2.50 to 3.25
 - mid-lactation, 2.75 to 3.25
 - late lactation, 3.00 to 3.50
 - growing heifers, 2.75 to 3.25
 - heifers at calving, 3.25 to 3.75
- c. employ corrective measures if more than 15% of the herd is above or below ideal BCS for their stage of lactation (25)
- d. keep records - identify animals that are too thin or too fat, ascertain the cause, and fix.



Body Condition Scoring Chart

LABELLED ILLUSTRATION OF A DAIRY COW

Illustration of a Dairy Cow with a BCS score of 3.



BODY CONDITION SCORES FOR DAIRY COWS
Overview of all the body condition scores for Dairy Cows

BCS 1:

SHORT RIBS:

- Ends sharp to touch
- Loin prominent, shelf-like appearance
- Obvious scalloping over top and ends

BACKBONE:

- Vertebrae prominent in chine, loin and rump area
- Individual bones easily visible

HOOK AND PIN BONES:

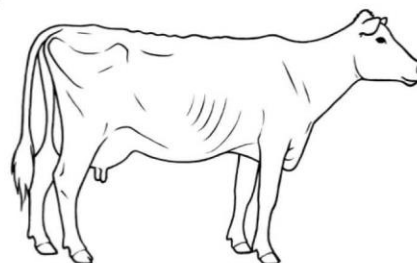
- Sharply defined, very angular in appearance
- No discernable fat pad

THURL (area over pelvis):

- Severe "V shaped" depression without fat cover

TAIL HEAD:

- Sunken and hollow on either side of tail head with obvious folds of skin
- Ligaments connecting pin bones to spine are sharply defined
- Vulva prominent.



BCS 2

SHORT RIBS:

- Ends not as prominent as BCS 1, but can be felt
- Edges easily felt, with slight fat cover, and slightly more rounded appearance
- Overhanging shelf effect less apparent

BACKBONE:

- Vertebrae in chine, loin and rump area, less visually distinct
- Easily feel individual vertebrae

HOOK AND PIN BONES:

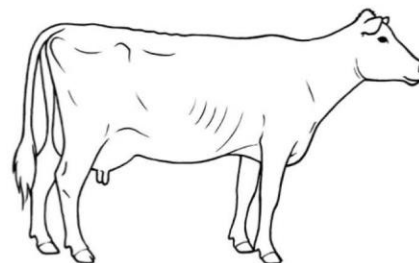
- Bones still prominent, angular
- No fat pad palpable

THURL (area over pelvis):

- Less severe "V shaped" depression
- Little tissue cover

TAIL HEAD:

- Both sides of the tail head are sunken and hollow
- Sharply defined ligaments connecting pin bones to spine





Body Condition Scoring Chart

BODY CONDITION SCORES FOR DAIRY COWS

Overview of all the body condition scores for Dairy Cows

BCS 3

SHORT RIBS:

- Ends can be felt with moderate pressure
- Ribs appear smooth without noticeable scalloping
- Overhanging shelf effect much less apparent

BACKBONE:

- Vertebrae in chine, loin and rump area appear rounded
- Backbone visible, but individual vertebrae not distinct

HOOK AND PIN BONES:

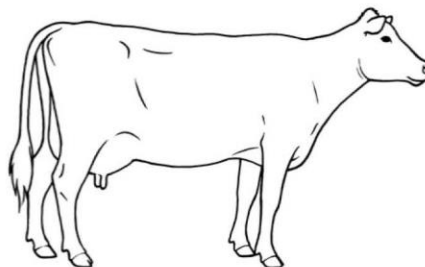
- Visible, but smooth, with rounded appearance
- Fat pad palpable

THURL (area over pelvis):

- Forms "U shaped" depression

TAIL HEAD:

- Both sides of tail head somewhat hollow, but skin folds not distinct
- Ligaments connecting pin bones to spine are rounded in appearance



BCS 4

SHORT RIBS:

- Individual rib ends not visible, only felt with firm pressure
- Overhanging shelf effect slight, barely visible

BACKBONE:

- Vertebrae in chine rounded, smooth
- Loin and rump areas appear flat

HOOK AND PIN BONES:

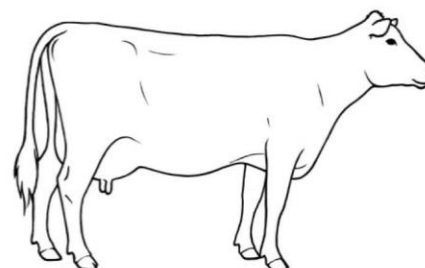
- Rounded, with obvious fat covering

THURL (area over pelvis):

- Area between hooks and pins almost flat
- Pelvic bone only felt with firm pressure

TAIL HEAD:

- Sides of tail head not hollow, no skin folds
- Some fat deposit palpable



BCS 5

SHORT RIBS:

- Ends can't be seen or felt
- No overhanging shelf effect

BACKBONE:

- Vertebrae in chine, loin and rump not visible
- Difficult to feel individual vertebrae

HOOK AND PIN BONES:

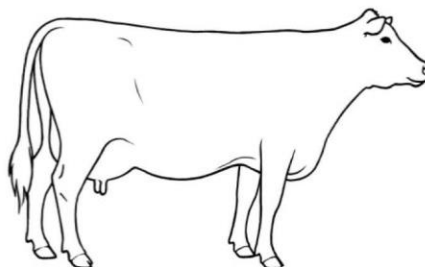
- Very round, buried (almost disappearing) in fat tissue

THURL (area over pelvis):

- Appears flat
- Filled in between the hooks and pins

TAIL HEAD:

- Hollow filled in
- Areas on both sides of tail head buried in fat tissue



Adapted from What's the Score? Body Condition Scoring for Livestock CD-ROM

CD 400/40-1_with permission of Alberta Agriculture and Rural Development. www.agriculture.alberta.ca

Copies of the CD can be ordered on-line at: [http://www1.agric.gov.ab.ca/\\$department/deptdocs.nsf/all/agdex9622](http://www1.agric.gov.ab.ca/$department/deptdocs.nsf/all/agdex9622)

Who Should I call?

Who at the SaskMilk office should producers call? Here's a handy guide!

For...

Call...

At...

<ul style="list-style-type: none"> ➤ Sponsorship Requests ➤ Donation Requests ➤ Dairyanna's Costume and Events 	Anita Medl	306-721-9483
<ul style="list-style-type: none"> ➤ School Milk Program ➤ Nutrition Resource Ordering 	Bev Eckert	306-721-9490
<ul style="list-style-type: none"> ➤ Quota Exchange and Private Quota Transfers ➤ Transfer Credits ➤ Security Applications ➤ Estimates for production ➤ Name Changes ➤ Designation of Signing Authority ➤ Monthly production numbers for producers ➤ Producer information for lending institutions ➤ Passwords for quota management sheet access 	Bev Solie	306-721-9488
<ul style="list-style-type: none"> ➤ Dairy Conference 	Darlene Weighill	306-721-9491
<ul style="list-style-type: none"> ➤ On Farm- licensing, facilities, equipment, driveways, yards, animal care ➤ Lab testing results ➤ Bulk truck drivers- licensing, complaints/issues ➤ Bulk tank calibrations ➤ Pro Action- Food Safety (CQM), Animal Care, Traceability, Biosecurity, Environment 	Deb Haupstein	306-721-9486
<ul style="list-style-type: none"> ➤ Producer statements ➤ Banking info for direct deposit of milk pay ➤ Milk pick-up issues –variances in volumes, planning to quit shipping, etc. 	Dianne Cardinal	306-721-9489
<ul style="list-style-type: none"> ➤ Monthly milk prices paid to producers ➤ Provincial & National production updates 	Doug Miller	306-721-9485
<ul style="list-style-type: none"> ➤ Adding, editing information on Producer Transfer Credit List ➤ Newsletter advertising ➤ Updating email/fax information for producer notices/send outs 	Jenn Buehler	306-721-9492
<ul style="list-style-type: none"> ➤ Media or news stories <i>or</i> if you have been contacted by any media agency or reporter ➤ Social media enquiries (twitter etc.) ➤ Trade agreements, international trade updates ➤ DEAP policy/program enquiries ➤ Website enquiries ➤ Research enquiries or proposals 	Joy Smith	306-721-9482

QUOTA EXCHANGE

The market-clearing price established for the August 2018 Quota Exchange was **\$33,000.00**.

The next Quota Exchange will be held on **September 15, 2018**. All offers to sell and bids to purchase quota through the Quota Exchange must be received at the SaskMilk office by midnight, **September 6, 2018**. SaskMilk recommends that offers and bids be submitted well in advance of the deadline date to ensure adequate time for corrections, if necessary.

When making bids on the Quota Exchange, the price on offers to sell quota is the minimum price that the producer is prepared to accept for that quota. Only if the market-clearing price is equal to or greater than the producer's minimum price will that producer qualify for participation in the Exchange. Conversely, the price on offers to purchase quota is the maximum price that the producer is prepared to pay for that quota. Only if the market-clearing price is equal to or less than the producer's maximum price will that producer qualify for participation in the Exchange. The clearing price is set at the price where the smallest difference exists between the accumulated volume offered for sale and the accumulated volume bid to purchase. The results of the Quota Exchange are outlined in the following Table.

AUGUST 2018 QUOTA EXCHANGE RESULTS SUMMARY

Market Clearing Price per kilogram of butterfat	\$ 33,000.00
Daily Kilograms offered to Purchase	90.95
Kilograms offered to Sell	46.18
Kilograms sold	4.45
Number of Producers	
- offered to purchase	5
- purchased quota	1
- offered to sell	10
- sold quota	4

AUGUST 2018 QUOTA EXCHANGE CLEARING PRICE RESULTS

Price (\$/daily kg b.f.)	No. of Sellers	Cumulative Sellers	Daily Kgs b.f. offered for sale	Cumulative sales	Cumulative Sales less Cumulative purchases	Cumulative purchases	Daily Kgs b.f. offered to purchase	Cumulative bidders	No. of buyers
\$30,000.00	1	1	1.50	1.50	-89.45	90.95	0.00	5	0
\$30,600.00	1	2	1.09	2.59	-88.36	90.95	0.00	5	0
\$31,000.00	0	2	0.00	2.59	-88.36	90.95	28.50	5	1
\$31,215.00	0	2	0.00	2.59	-59.86	62.45	20.00	4	1
\$31,818.00	0	2	0.00	2.59	-39.86	42.45	22.00	3	1
\$32,600.00	0	2	0.00	2.59	-17.86	20.45	16.00	2	1
\$33,000.00	2	4	4.52	7.11	2.66	4.45	0.00	1	0
\$34,000.00	5	9	19.07	26.18	21.73	4.45	0.00	1	0
\$35,000.00	1	10	20.00	46.18	41.73	4.45	4.45	1	1

* Please contact Bev Solie at 306-949-6999 for inquiries dealing with quota management sheets, the Quota Exchange, for transfer credits, or with any other quota transactions.

TRANSFER CREDIT SUMMARY REPORT

MONTH	# OF PRODUCERS TRANSFER IN	# OF PRODUCERS TRANSFER OUT	TOTAL KGS BUTTERFAT
July	12	13	9,427
August	20	17	16,209
September	16	21	17,869
October	20	24	25,836
November	20	22	21,772
December	19	22	23,850
January, 2018	17	21	16,567
February	21	24	19,828
March	21	18	16,406
April	28	23	28,792
May	17	17	22,203
June	24	23	20,038
July	24	20	28,252

PRIVATE TRANSFERS PROCESSED

MONTH	DAILY KILOGRAMS
Aug	195.18
Sept	118
Oct	30.20
Nov	102.82
Dec	255.22
Jan 2018	45.10
Feb	1011
Mar	282
Apr	225
May	0
June	148.19
July	107.13

OVER QUOTA (OVER 5 DAYS) REPORT BY MONTH

MONTH	# OF PRODUCERS	KGS BUTTERFAT
July	11	1,207
August	4	663
September	2	102
October	6	609
November	4	272
December	8	956
January 2018	11	2,146
February	16	3,396
March	15	5,054
April	6	3,434
May	8	1,716
June	6	939
July	4	487

SUMMARY REPORT OF CREDITS JULY, 2018 – 165 PRODUCERS

DAYS	# OF PRODUCERS	POSITIVE CREDITS ACCUMULATED (KGS OF BUTTERFAT)
+ 5	4	1,330
0 to + 5	31	9,030
TOTAL	34	10,360
DAYS	# OF PRODUCERS	NEGATIVE CREDITS ACCUMULATED (KGS OF BUTTERFAT)
-15	1	-75
-10 to -15	24	-61,933
-5 to -10	42	-70,204
0 to -5	61	-30,608
TOTAL	128	-162,820

LOST OPPORTUNITY REPORT

MONTH	# OF PRODUCERS	LOST OPPORTUNITY (KGS OF BUTTERFAT)
July, 2018	1	13
June, 2018	3	1,361
May, 2018	1	198
April, 2018	3	458
March, 2018	6	1,226
February, 2018	5	887
January, 2018	4	802
December, 2017	3	1,237
November, 2017	6	2,750
October 2017	5	1,773
September, 2017	2	389
August, 2017	5	714
July, 2017	5	1,738

WEIGHTED AVERAGE COMPONENT TESTS & PRICES JULY, 2018

Components	Average Test	Price per kilogram Class 1 to 5
Butterfat	3.9516	16.204681
Protein	3.2750	2.300332
Other Solids	5.7262	0.657809

Based on the average component tests for the province, the average price received was **\$75.33** per hectolitre. **The average butterfat price received per kilogram was \$19.06.**

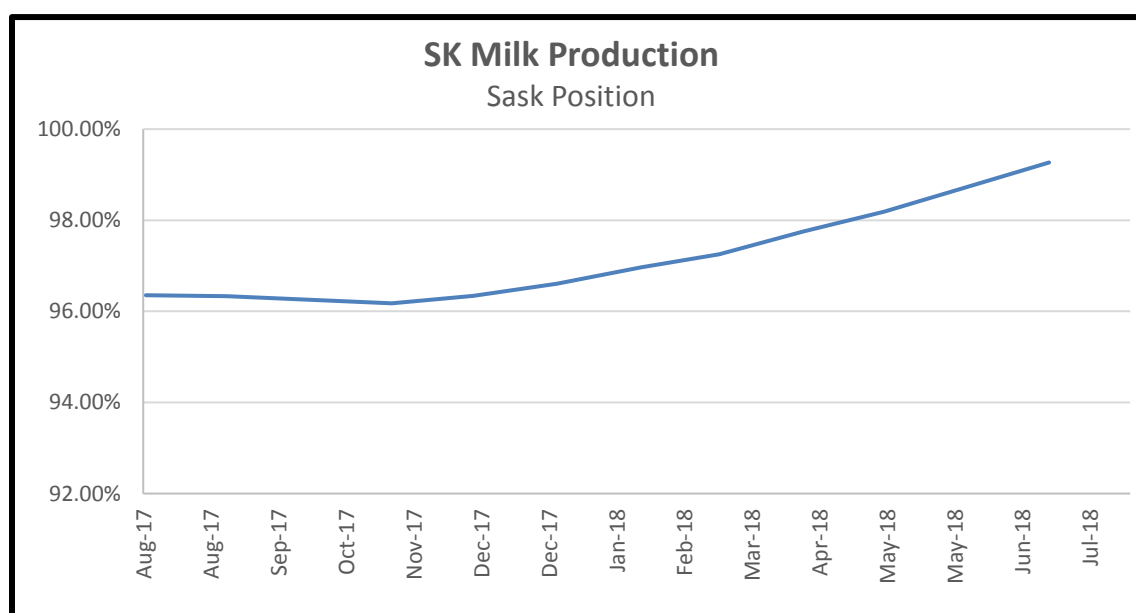
SASKATCHEWAN MILK POOL RESULTS JUNE 2018

Milk Sale Revenue	\$ 17,082,846.79
Western Milk Pool	\$ 1,631,142.86
Total Pool Value	\$ 18,713,989.65

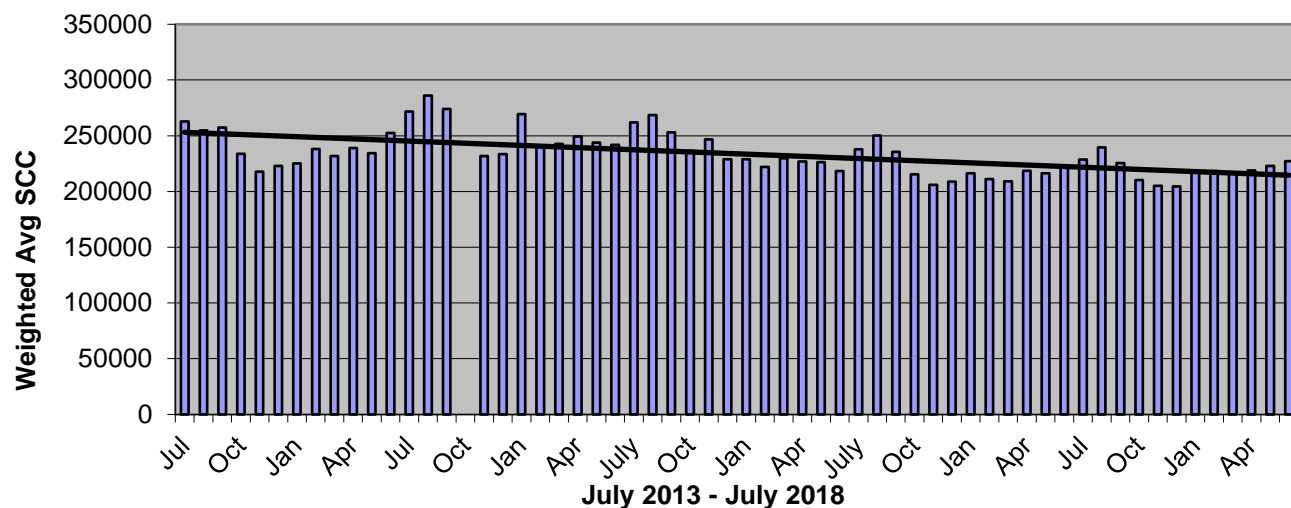
In July, Saskatchewan had an estimated monthly CDC allocation of **960,808 kilograms** of butterfat. In the month of July, Saskatchewan production was **20,567** of butterfat **over**. Saskatchewan has filled cumulatively **99.27%**.

	(1) Monthly Total Production	(2) Total Monthly CDC Quota Allocation (ESTIMATE)	(3) Monthly Over or (Under) Production	(4) Cumulative Quota Filled in - %	(5) Daily Kgs Shipped
	Kgs bf	Kgs bf	Kgs bf		Kgs bf
			col. 1 - 2 = 3		
Jul-17	896,607	937,580	(40,973)	96.34%	28,923
Aug-17	901,329	958,137	(56,808)	96.36%	29,075
Sept-17	883,930	934,554	(50,624)	96.33%	29,464
Oct-17	918,200	982,575	(64,375)	96.25%	29,619
Nov-17	909,519	953,131	(43,612)	96.18%	30,317
Dec-17	974,991	1,021,793	(46,802)	96.34%	31,451
Jan-18	998,147	955,201	42,946	96.60%	32,198
Feb-18	920,553	885,091	35,462	96.97%	32,877
Mar-18	1,020,174	999,129	21,045	97.26%	32,909
Apr-18	983,089	952,267	30,822	97.75%	32,770
May-18	1,002,759	987,750	15,009	98.19%	32,347
Jun-18	957,753	941,000	16,753	98.77%	31,925
Jul-18	981,375	960,808	20,567	99.27%	32,713

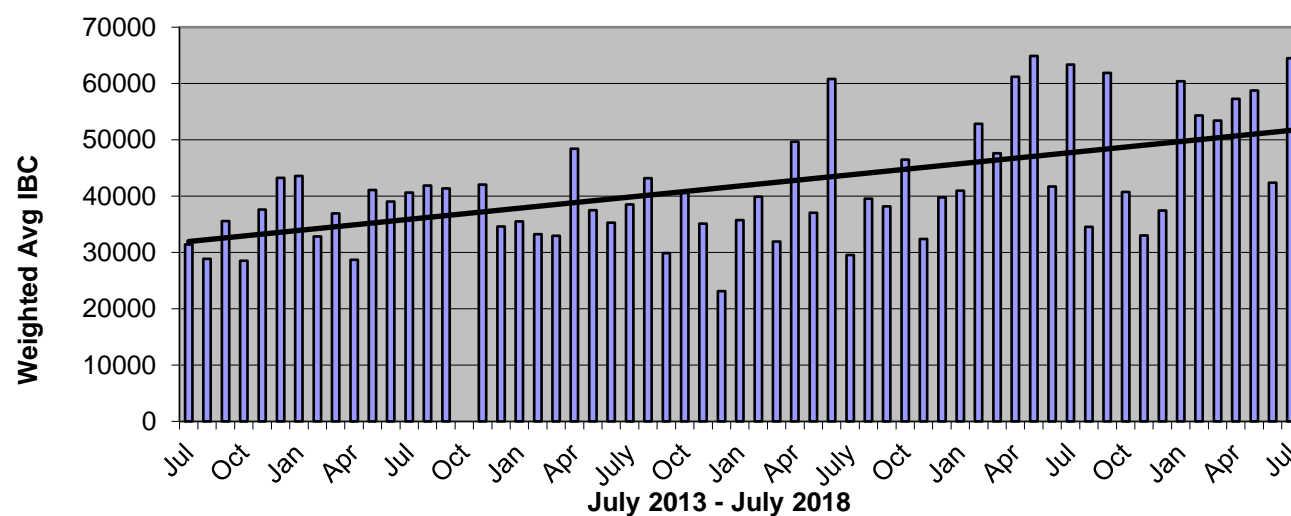
- (1) Monthly Production in Saskatchewan
- (2) Total Monthly Quota = Class 1 sales + Monthly MSQ + Carry Forward (**ESTIMATE ONLY**)
- (3) Difference between the monthly production (1) and the total monthly quota (2)
- (4) Cumulative position on a rolling 12 month period
- (5) Daily quota shipped



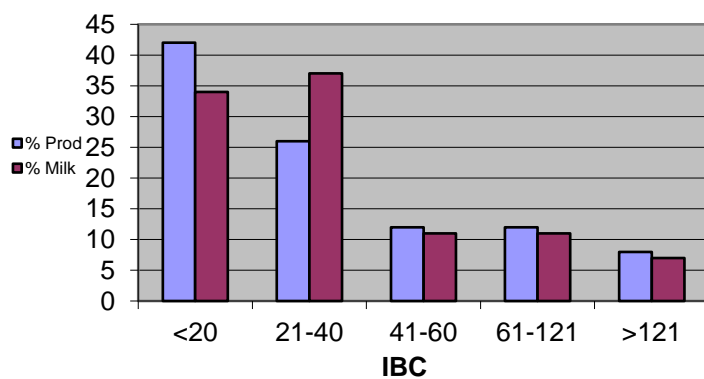
Monthly Weighted Average SCC



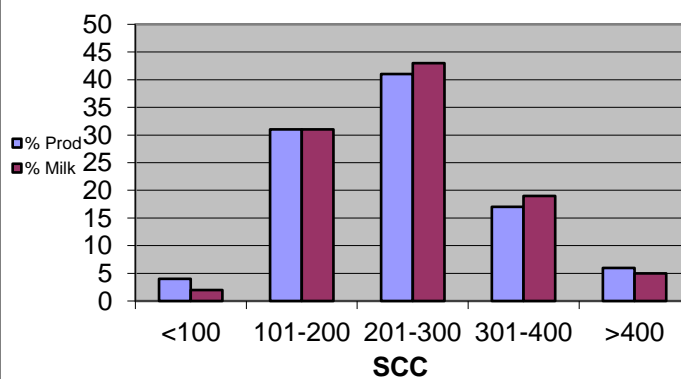
Monthly Weighted Average IBC



July-2018



July-2018



PROVINCIAL WEIGHTED AVERAGES

INHIBITOR TEST STATIONS

SaskMilk has established a number of inhibitor test stations around the province. Producers needing to check their bulk tanks for inhibitors can take a sample to the test station closest to their location.

The test stations have the Charm Trio test strips available for testing. The Charm Trio test is the test that the plant uses. It tests for the following drugs:

Beta-lactam Drug	Detection Level [†] (ppb*)	US Safe Level or Tolerance / Canadian MRL (ppb*)	Sulfa Drug	Detection Level [†] (ppb*)	US Safe Level or Tolerance / Canadian MRL (ppb*)
Amoxicillin	3.1	10 / None	Sulfadimethoxine	4.7	10 / 10 [∞]
Ampicillin	7.7	10 / 10	Sulfamethazine	7.7	10 / 10 [∞]
Ceftiofur and Metabolites [^]	53	100 / 100	Tetracycline Drug	Detection Level[†] (ppb*)	US Safe Level/Tolerance / Canadian MRL (ppb*)
Cephapirin	14	20 / 20	Chlortetracycline	54	300 / 100
Cloxacillin	7.4	10 / None	Oxytetracycline	66	300 / 100
Penicillin G	2.2	5 / 6 ^{&}	Tetracycline	21	300 / 100

[†] Positive at least 90% of the time with 95% confidence.

* parts per billion or ng/mL

[^] Ceftiofur parent drug sensitivity is approximately 1/2 that reported in the table.

[&] Canadian MRL for penicillin G is 0.01 IU/ml, equivalent to 6 ppb.

[∞] Canadian MRL for sulfa drugs are singly or in combination with other MRL listed sulfonamides.

Test stations are located at the following locations:

1. Swift Current, SK - Agrifoods truck bay - 675 Cheadle Street West
Office 306-773-1097 or Rodger Ruf 306-741-3261
2. Star City, SK - Star City Colony - Reuben Tschetter 306-921-9381
3. Grenfell, SK - Jim Ross 306-697-2232
4. Yorkton, SK - Ford Dairy Farms Inc. - Bud and Margaret Ford 306-782-7240
5. Saskatoon, SK - Agrifoods Truck Bay - east of the Saputo plant receiving bay
lead hand - Mike V. or Mike K. 306-664-0202 after hours: 306-668-8135

Charm tests strips and Charm testers are now available for purchase through SaskMilk. Agrifoods is now carrying SNAP test kits for tetracyclines as well as beta lactams.

For further information you can contact: Deb Haupstein 306-721-9486



If You Can't Ship It - Test It!

BSE surveillance is still important and every animal tested makes a difference.

Support your cattle industry by having your 4-D (dead, diseased, dying or downer) cattle tested for BSE.

For more information, call the Canadian Food Inspection Agency at 1-877-727-5273.



Got unwanted pesticides or livestock medications?

Farmers: safely dispose of unwanted or obsolete agricultural pesticides and livestock medications – **no charge!** Take them to the following locations on the dates noted between **10 a.m. and 4 p.m.**

FOAM LAKE

October 1
Richardson Pioneer
Hwy 16 West
(3 miles west of
Foam Lake)
306-272-3344

PORCUPINE PLAIN

October 1
Nutrien Ag Solutions
Hwy 23 West
306-278-3444

SASKATOON

October 1
Richardson Pioneer
South of junction
Hwy 5 & 41
306-249-2200

SPIRITWOOD

October 1
Cavalier Agrow
Hwy 24 North
1/2 mile
306-883-2476

BIGGAR

October 2
Rack Petroleum
Hwy 4 South
306-948-1800

HUDSON BAY

October 2
Nutrien Ag Solutions
Highway 9 South
306-865-3999

TURTLEFORD

October 2
Turtleford and District
Co-op
Highway 303 West
306-845-2222

YORKTON

October 2
Yorkton Distributors
191 York Rd West
306-782-2645

LLOYDMINSTER

October 3
Lloydminster &
District Co-op
1 Upgrader Rd (Hwy 16)
306-825-4661

MELFORT

October 3
Nutrien Ag Solutions
810 Saskatchewan Ave. W
(Hwy 3)
306-752-4711

NORQUAY

October 3
Norquay Co-op
#13 Hwy 49E
306-594-2215

UNITY

October 3
Richardson Pioneer
Hwy 21 South
1 Stephenson Rd
306-228-2619

CHOICELAND

October 4
Pineland Co-op
1/2 mile south of
junction 55 & 6
306-428-2028

HUMBOLDT

October 4
Richardson Pioneer
10 km west of Humbolt
Hwy 5
306-682-1730

KINDERSLEY

October 4
G-Mac's Ag
907 11th Ave East
306-463-4622

NORTH BATTLEFORD

October 4
Cargill
12202 Durum Ave
306-445-3621
306-481-3806

OUTLOOK

October 5
Nutrien Ag Solutions
220 Railway Ave
306-867-8702

PRINCE ALBERT

October 5
Lake Country Co-op
4075 5th Ave East
306-922-2476

WALDHEIM

October 5
Nutrien Ag Solutions
2003 1st Ave East
306-945-2233

WATROUS

October 5
Blair's Fertilizer
2 miles south of
Watrous on Hwy 2
306-946-3150

PARTNERS



(Next Cleanfarms collection in these areas in 2021.)

For more information: 1-877-622-4460

cleanfarms.ca

QUOTA LISTING or CLASSIFIED AD SERVICE

SaskMilk offers a free quota listing service as part of its Newsletter. Anyone wishing to sell or purchase quota and/or cows or miscellaneous dairy equipment is welcome to contact the SaskMilk office at (306) 949-6999. All prices and negotiations will be independent of SaskMilk. **Please note that ads will be posted in two issues and will then be removed unless SaskMilk is notified otherwise.**

Classifieds

120 used Artex stalls.
Phone 306-281-8258

Double 6 herringbone parlour. 6 Surge Eclipse milkers, receiving jar, vacuum pump, wash system, and all milk lines included.

Call Ron @ 306-762-2202 for details and price.

Quota for sale.
Contact Sean at sgorrill@sasktel.net

SASKMILK BOARD OF DIRECTORS

Melvin Foth – Chair
(306) 225-4678
fvl@sasktel.net

Brad Kornelius – Vice Chair
(306) 260-4904
bradkornelius@gmail.com

Denise Coghill
(306) 699-7764
denmars@sasktel.net

Jack Ford
(306) 328-4700
jackford@sasktel.net

John Hylkema
(604) 798-6450
jonhylkema@gmail.com

Albert Leyenhorst
(306) 230-0154
albertleyenhorst@gmail.com

Tom MacKenzie
(306) 352-2292
tommymilk@icloud.com

Blaine McLeod
(306) 631-8053
rb.mcleod@sasktel.net

Leonard Wipf
(306) 491-0432
leonard.countryclover@gmail.com

For further information, please contact the SaskMilk office.

444 McLeod Street
Regina, Saskatchewan S4N 4Y1
Telephone: (306) 949-6999
Fax: (306) 949-2605
Website: www.saskmilk.ca
Email: info@saskmilk.ca