



## 2024 Spring Producer Meetings

SaskMilk's Spring Producer Meetings are scheduled for the beginning of April. These meetings are in person and a great opportunity to connect with your Board of Directors and fellow farmers. Meetings will include topics such as the WMP Transformation, an update on Dairy Innovation West (DIW) and SaskMilk business updates. There will also be time for discussion.

Registration begins at 9:30 a.m. and meetings start at 10:00 a.m. Lunch is provided.

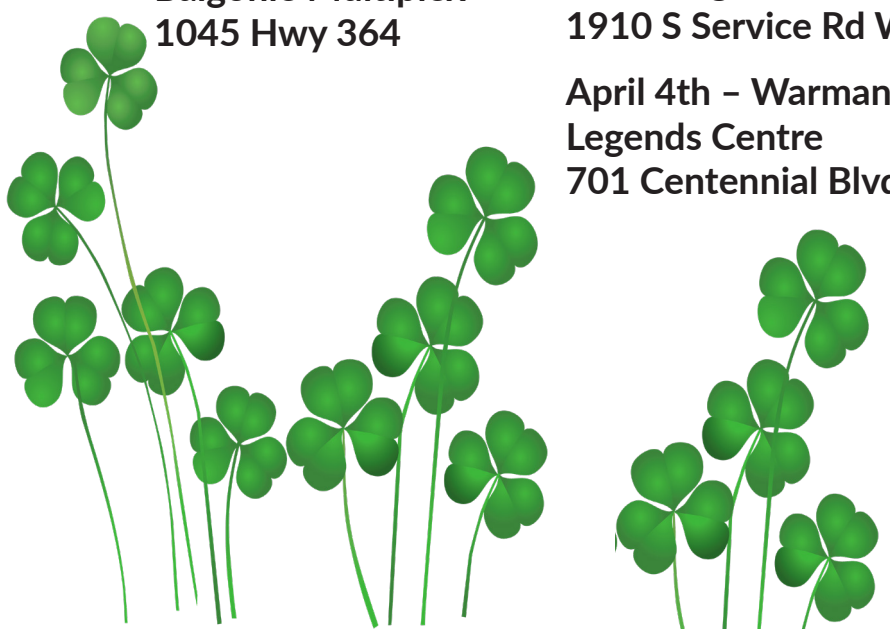
April 2nd - Balgonie  
Balgonie Multiplex  
1045 Hwy 364

April 3rd - Swift Current  
F.O.E. Eagles  
1910 S Service Rd W

April 4th - Warman  
Legends Centre  
701 Centennial Blvd. N.

## In this Issue:

The Big Bake Silent Auction	...	2
Rayner Dairy Report	...	5
Upcoming Events in the Community	...	9
Quota Exchange	...	10
Production Update	...	14
Classifieds	...	19



# The Big Bake

## Silent Auction



SaskMilk was proud to participate in the Big Bake Silent Auction on February 14th. In just two hours, \$5,400 was raised which was more than double the amount last year.

All proceeds from the silent auction go directly to supporting University of Regina students through bursaries, scholarships, research, and academic programming.



The Big Bake Silent Auction commences on Valentine's Day 2024.





**Chocolate Cake with Caramel and Toffee Bits, donated by SaskMilk.**



**Cotton Candy Cakes by Shelley Reid c/o SaskMilk.**





**REGINA 2024**



Curling fans sported SaskMilk cowboy hats during the 2024 Brier in Regina March 1 to 10, 2024.



# RAYNER DAIRY REPORT

## Have you considered a summer mineral program?

By Dr. Greg Penner (PhD) and Claire Bertens

While Western Canada might not be thought of as a hot and humid place, there is evidence that heat stress conditions occur on over 40 percent of the summer days. Heat stress occurs when the combined temperature and humidity limit the ability of cows to cool themselves. As such, the temperature-humidity index (THI) is used to evaluate risk for heat stress. As shown in the figure below, mild heat stress occurs when the THI is between 68-71, moderate heat stress occurs with THI values of 72-79, severe heat stress with THI of 80-90, and heat stress becomes life threatening or lethal for cattle when THI is above 90.

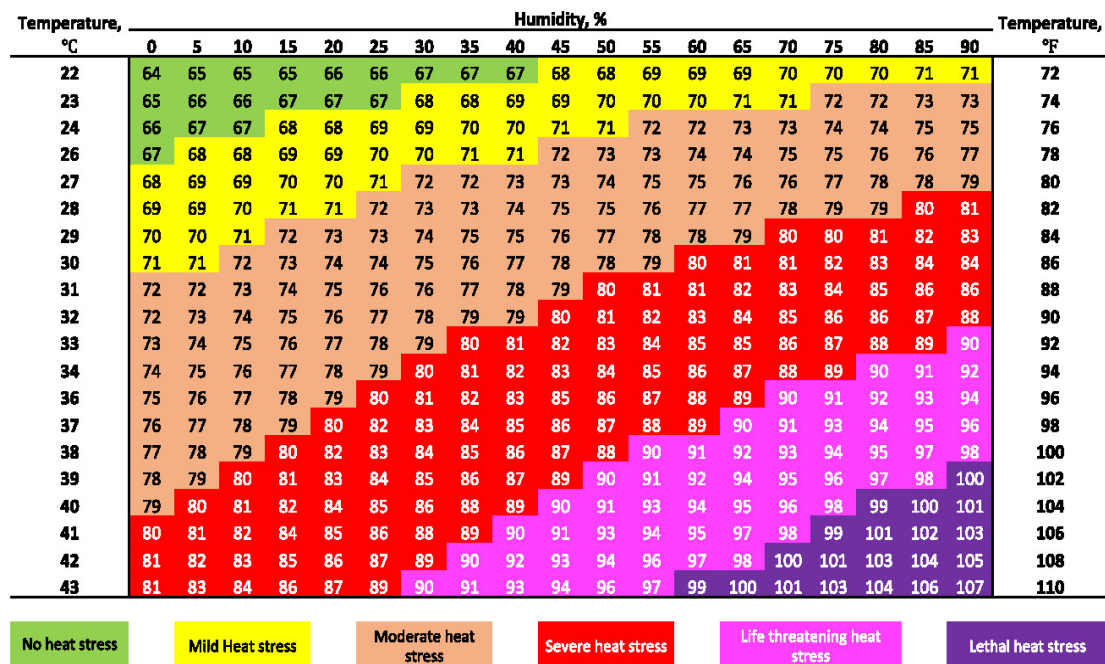


Figure 1. Dairy cow temperature and humidity Index (THI) and Indicators for heat stress (HS).

Adequate barn ventilation and, if necessary, use of cooling systems such as soakers are effective tools to reduce the impact for dairy cattle. That said, not all barns eliminate risk for heat stress, and not all cattle may be protected. Lactating cows experiencing heat stress reduce feed intake, reduce milk and milk component yields, and may increase



somatic cell count. The magnitude of production responses can be substantial with moderate to severe heat stress decreasing feed intake by up to 35 percent and milk production by up to 40 percent. Dry cows exposed to heat stress have lower milk fat yield in the upcoming lactation and heat stress for calves and heifers reduces feed intake, growth, and health. Some research also suggests that cattle exposed to heat stress are at greater risk for rumen acidosis.

A nutritional strategy to help cows mitigate heat stress is to increase the dietary cation anion difference, more commonly known as DCAD. Increasing the DCAD usually involves adding more sodium bicarbonate or potassium carbonate into the diet. The added sodium and potassium may help replenish minerals lost in sweat, saliva, and urine. Increasing DCAD may also increase water intake stimulating cows to drink water that can help reduce their heat provided the water is colder than body temperature. Increased drinking also increases urination, which helps to transfer heat outside the cow's body in the warm urine. The carbonate portions of the sodium bicarbonate and potassium carbonate are buffers designed to stabilize rumen pH and may help reduce risk for rumen acidosis. As there are many different buffer options and different strategies to provide added sodium or potassium, we set out to understand the importance of the mineral (the sodium) and buffer components (carbonate) separately.

In this study, we used 16 lactating dairy cows (8 multiparous averaging 136 days in milk and 8 primiparous that averaged 80 days in milk) with 8 of them having a rumen cannula. Cows were fed twice daily and milked 3 times daily. All cows were exposed to mild heat stress by controlling the temperature and humidity in the barn ensuring the THI was between 68 and 72 from 6 am to 4 pm. We allowed the barn to cool overnight, and the resulting average THI was 67. Treatments imposed in this study were diets with high or low DCAD (18 vs. 40 mEq/100 g) using sodium acetate as the DCAD source. In addition, treatments included a low or high buffer. The buffer source was calcium-magnesium carbonate (1 percent of the diet DM; MIN-AD, Papillon Agricultural Company, Easton, MD). The use of sodium acetate allowed us to alter DCAD without altering the buffer supply, and the use of the calcium-magnesium carbonate enabled alteration of dietary buffer without affecting DCAD.

Cows in this study were in mild heat stress based on elevated rectal temperatures. Cow behaviour (longer standing times than would be expected and changes in feeding behaviour) also indicated heat stress. We did not detect any treatment effects for dry matter intake or milk yield with averages of 25.1 kg/d for dry matter intake and 36.9 kg/d for milk yield. Fat yield (1.53 kg/d) was greater for cows fed high DCAD than those fed low DCAD (1.50 kg/d) but was not affected by dietary buffer. While we could not measure water intake as cows may play with the water bowl, urine excretion was increased by nearly 4 kg/d with high DCAD over low DCAD. This confirms that providing additional Na to increase DCAD increases water intake. Feeding high DCAD also increased blood bicarbonate concentration suggesting cows were maintaining blood acid-base balance more effectively. While we did not detect changes in rumen pH with DCAD or buffer feeding buffer reduced the leakiness of the gut by 27 percent. A leaky gut has been shown to

increase risk for immune activation which diverts nutrients away from milk production to support the immune response.

In conclusion, this research is interpreted to indicate that increasing DCAD may be an effective strategy to stimulate water intake and help maintain blood acid-base balance. For lactating cows, this might help support greater milk fat production. We also conclude that provision of calcium-magnesium carbonate may help prevent a leaky gut for cattle exposed to heat stress.

So how do you apply this information? We have shown that there are nutritional tools to help reduce the impact of heat stress. For cows exposed to heat stress, increasing the DCAD and increasing the buffer supply may help promote performance or reduce risk of complications. While not tested on calves, replacement heifers, or far-off dry cows, it is likely that these nutritional strategies would have similar effects to help mitigate heat stress for those cattle.

More information on the research can be obtained by emailing [greg.penner@usask.ca](mailto:greg.penner@usask.ca).

This research was supported by SaskMilk, Inter-Rock Minerals (parent company of Papillon Agricultural Company), and the Natural Sciences and Engineering Research Council through the Alliance grant program. Claire Bertens is a PhD student in the Department of Animal and Poultry Science at the University of Saskatchewan studying under the supervision of Dr. Greg Penner (PhD).

Beta-lactam Drug	Detection Level† (ppb*)	US Safe Level or Tolerance / Canadian MRL (ppb*)	Sulfa Drug	Detection Level† (ppb*)	US Safe Level or Tolerance / Canadian MRL (ppb*)
Amoxicillin	3.1	10 / None	Sulfadimethoxine	4.7	10 / 10∞
Ampicillin	7.7	10 / 10	Sulfamethazine	7.7	10 / 10∞
Ceftiofur and Metabolites^	53	100 / 100	Tetracycline Drug	Detection Level† (ppb*)	US Safe Level/Tolerance / Canadian MRL (ppb*)
Cephapirin	14	20 / 20	Chlortetracycline	54	300 / 100
Cloxacillin	7.4	10 / None	Oxytetracycline	66	300 / 100
Penicillin G	2.2	5 / 6&	Tetracycline	21	300 / 100

### Test stations are located at the following locations:

Business hours ONLY: Monday-Friday 8:00 a.m. – 4:00 p.m	AFTER HOURS TESTING		
Saputo Contact: 122 Wakooma Street, Saskatoon	Warman Veterinary Services Contact: 86 Great Plains Rd, SK S4L 1C9 Phone: (306) 347-9995	Star City Colony Contact: Reuben Tschetter: (306) 921-9381	Osler Dairy Contact: Tim Ens: (306) 281-7547

Charm tests strips and Charm testers are available for purchase through SaskMilk 306-949-6999. Snap tests and supplies are available for purchase through Agrifoods 306-664-0264.

# PARTICIPANTS NEEDED!

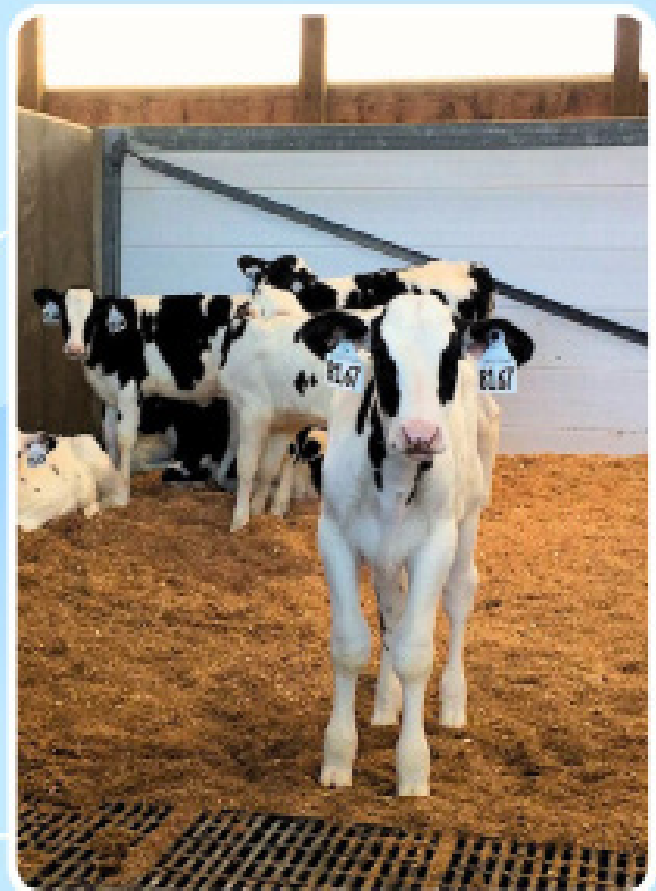
*Are you considering how to adopt social housing for calves on your dairy farm?*

If so, please participate in research that is seeking to understand dairy farmer acceptance of and attitudes toward the new social calf housing requirement in the Dairy Code of Practice

*This UBC study is being conducted under the supervision of Dr. Daniel Weary, Professor at the University of British Columbia Animal Welfare Program*

## Who we are looking for:

Dairy farmers in Western Canada who can participate in a 60-minute virtual or in-person interview



Email [taydyck@student.ubc.ca](mailto:taydyck@student.ubc.ca) to participate!



THE UNIVERSITY OF BRITISH COLUMBIA

Animal Welfare Program

Faculty of Land and Food Systems



## SaskMilk Board Activities

### March/April

March 20 & 21	CMSMC
March 26	SaskMilk Board Meeting
April 2	Spring Producer Meeting (Balgonie)
April 3	Spring Producer Meeting (Swift Current)
April 4	Spring Producer Meeting (Warman)
April 10 & 11	DFC Board Meeting
April 29 & 30	SaskMilk Board Meeting

## In the Community

Check out these Upcoming SaskMilk Events!

### March/April

March 14 - 17	Tavria Dance Festival - Regina
March 16	RUSH - Saskatoon
March 21 - 23	Basketball (Hoopla) Provincial Championship - Moose Jaw
March 23	Thuner Hockey Tournament
April 4	4H Spring Steer & Heifer Show - Yorkton
April 5	Regina Prairie Ringette Tournament - Regina
April 5 - 7	PA Barveenok Ukrainian Dance Festival - Prince Albert
April 6	RUSH - Saskatoon
April 8	Sask Highschool Rugby Competition - Regina
April 13	RUSH - Saskatoon
April 20	RUSH - Saskatoon
April 20	CNIB - Guide Dogs with Purpose Gala - Regina
April 20 - 21	Lloydminster 4-H Judging and Grooming - Lloydminster
April 20 - 23	SGI The Best in the West - Saskatoon
April 28	Gopher Attack - Regina
April	Lloydminster Ag Education - Lloydminster

## Quota Exchange

The market-clearing price established for the March 2024 Quota Exchange was **\$40,000.00**.

The next Quota Exchange will be held on **April 15, 2024**. All offers to sell and bids to purchase quota through the Quota Exchange must be submitted by midnight, **April 6, 2024**. SaskMilk recommends that offers and bids be submitted well in advance of the deadline date to ensure adequate time for corrections, if necessary.

When making bids on the Quota Exchange, the price on offers to sell quota is the minimum price that the producer is prepared to accept for that quota. Only if the market-clearing price is equal to or greater than the producer's minimum price will that producer qualify for participation in the Exchange. Conversely, the price on offers to purchase quota is the maximum price that the producer is prepared to pay for that quota. Only if the market-clearing price is equal to or less than the producer's maximum price will that producer qualify for participation in the Exchange. The clearing price is set at the price where the smallest difference exists between the accumulated volume offered for sale and the accumulated volume bid to purchase. The results of the Quota Exchange are outlined in the following table.

### MARCH 2024 QUOTA EXCHANGE RESULTS

Market Clearing Price per Kilogram of Butterfat	\$40,000.00
Daily Kilograms Offered to Purchase	116.29
Kilograms Offered to Sell	145.94
Kilograms Sold	58.29
Number of Producers	
- offered to purchase	15
- purchased quota	8
- offered to sell	15
- sold quota	9

### MARCH 2024 QUOTA EXCHANGE CLEARING PRICE RESULTS

Price (\$/daily kg b.f.)	No. of Sellers	Cumulative Sellers	Daily Kgs b.f. offered for sale	Cumulative sales	Cumulative Sales less Cumulative purchases	Cumulative purchases	Daily Kgs b.f. offered to purchase	Cumulative bidders	No. of buyers
\$35000.00	0	0	0.00	0.00	-116.29	116.29	10.00	15	1
\$35,100.00	0	0	0.00	0.00	-106.29	106.29	10.00	14	1
\$35,200.00	0	0	0.00	0.00	-96.29	96.29	10.00	13	1
\$38,000.00	0	0	0.00	0.00	-86.29	86.29	10.00	12	1
\$38,250.00	1	1	3.00	3.00	-73.29	76.29	0.00	11	0
\$38,550.00	1	2	4.00	7.00	-69.29	76.29	0.00	11	0
\$38,750.00	1	3	18.00	25.00	-51.29	76.29	0.00	11	0
\$39,000.00	2	5	7.88	32.88	-43.41	76.29	15.00	11	2
\$39,500.00	0	5	0.00	32.88	-28.41	61.29	3.00	9	1
<b>\$40,000.00</b>	<b>4</b>	<b>9</b>	<b>46.50</b>	<b>79.38</b>	<b>21.09</b>	<b>58.29</b>	<b>35.00</b>	<b>8</b>	<b>4</b>
\$40,050.00	0	9	0.00	79.38	56.09	23.29	5.00	4	1
\$40,850.00	1	10	13.56	92.94	74.65	18.29	0.00	3	0
\$41,000.00	2	12	18.00	110.94	92.65	18.29	18.29	3	3
\$42,000.00	2	14	25.00	135.94	135.94	0.00	0.00	0	0
\$44,000.00	1	15	10.00	145.94	145.94	0.00	0.00	0	0



<b>TRANSFER CREDIT SUMMARY REPORT</b>			
MONTH	# OF PRODUCERS TRANSFER IN	# OF PRODUCERS TRANSFER OUT	TOTAL KGS OF BUTTERFAT
February 2023	23	23	16,577
March 2023	19	19	13,040
April 2023	17	17	15,431
May 2023	18	18	15,363
June 2023	14	14	9,088
July 2023	25	25	24,665
August 2023	19	19	11,896
September 2023	17	17	13,030
October 2023	19	19	11,593.00
November 2023	14	14	12,364.00
December 2023	15	15	8,349.00
January 2024	10	10	3,703.00
<b>February 2024</b>	<b>11</b>	<b>11</b>	<b>7,580.00</b>

<b>PRIVATE TRANSFERS PROCESSED</b>	
MONTH	DAILY KILOGRAMS
February 2023	20.00
March 2023	0.00
April 2023	70.00
May 2023	5.00
June 2023	8.00
July 2023	0.00
August 2023	0.00
September 2023	0.00
October 2023	0.00
November 2023	0.00
December 2023	0.00
January 2024	0.00
<b>February 2024</b>	<b>0.00</b>

<b>OVER QUOTA (OVER 5 DAYS) REPORT BY MONTH</b>		
MONTH	# OF PRODUCERS	KGS BUTTERFAT
February 2023	3	373
March 2023	5	803
April 2023	4	422
May 2023	8	369
June 2023	1	36
July 2023	1	13
August 2023	1	18
September 2023	1	211
October 2023	5	773
November 2023	3	41
December 2023	6	475
January 2024	10	1,178
<b>February 2024</b>	<b>9</b>	<b>1,850</b>

SUMMARY REPORT OF CREDITS FEBRUARY 2024 - 147 PRODUCERS		
DAYS	# OF PRODUCERS	POSITIVE CREDITS ACCUMULATED (KGS OF BFAT)
+ 5	10	9,893
0 to + 5	79	45,954
<b>TOTAL</b>	<b>89</b>	<b>55,847</b>
DAYS	# OF PRODUCERS	NEGATIVE CREDITS ACCUMULATED (KGS OF BFAT)
-15	1	605
-10 to -15	7	40,431
-5 to -10	13	18,842
0 to -5	37	21,763
<b>TOTAL</b>	<b>58</b>	<b>81,641</b>

LOST OPPORTUNITY REPORT		
MONTH	# OF PRODUCERS	LOST OPPORTUNITY (KGS OF BUTTERFAT)
February, 2023	1	157
March, 2023	2	845
April, 2023	3	1,973
May, 2023	1	834
June, 2023	1	410
July, 2023	1	747
August, 2023	2	254
September, 2023	2	337
October, 2023	2	202
November 2023	2	279
December 2023	0	0
January 2024	0	0
<b>February, 2023</b>	<b>1</b>	<b>775</b>

WEIGHTED AVERAGE COMPONENT TESTS & PRICES FEBRUARY 2024		
COMPONENTS	AVERAGE TEST	PRICE PER KILOGRAM CLASS 1 TO 5
Butterfat	4.4182	18.231715
Protein	3.3535	2.825892
Other Solids	5.9237	0.799889

**The average butterfat price received per kilogram was \$21.45**

Milk Sale Revenue	\$21,620,597.83	<b>Quality Bonus:</b> WMP Quality Bonus 0.001650 SaskMilk Quality Bonus 0.000990  <b>Total Quality Bonus Rate for February 2024</b> 0.002640 per litre
WMP Revenue/<Expense>	<\$57,758.75>	
<b>Total Revenue</b>	<b>\$21,678,356.58</b>	





## Farm Stress Line

SASKATCHEWAN  
Made Possible by CN

**Providing support when you need it the most, available 24 Hours, Days a week. CALL 1-800-667-4442**

Farm Stress Line was initiated and funded by the Ministry of Agriculture in 1992. The Ministry of Agriculture contracted with MCS Inc. in 2012 to administer and provide crisis counselling to rural Saskatchewan. This change provides a 24hr 7 days a week response through a 1-800 toll free phone line with a proven expertise in crisis counselling.

Mobile Crisis Services, Inc. is a non-profit community-based organization that has been providing crisis intervention services to Regina and the province of Saskatchewan since 1974. The overall purpose of the agency is to provide integrated and comprehensive social and health crisis intervention services.

Mobile Crisis Services is governed by a volunteer Board of Directors. These volunteers contribute a significant amount of time to assist in the direction of programs and services for youth, individuals, families and seniors.

Services are provided on a 24-hour, seven day a week basis, in order to assure accessibility regardless of the time of day. The agency was formulated on the philosophy of “where services should be provided, they will be provided.” The agency represents an innovative approach to crisis intervention and is an integral part of the health and social service delivery systems. Mobile Crisis Services is committed to community health and the development of supportive communities. For more information, visit:

<https://farmstressline.ca/>



**HELP MAKE  
CRITICAL CARE  
ANYWHERE,  
POSSIBLE.**

**Donate to the STARS  
Radiothon on April 9 & 10.**

**Call the Viterra Lifeline at  
1-877-507-8277 (50-STARS) or  
visit [criticalcareontheair.ca](http://criticalcareontheair.ca)**



	(1) Monthly Total Production  Kgs of bf	(2) Total Monthly CDC Quota Allocation  Kgs bf	(3) Monthly Over or (Under) Production  Kgs bf  col. 1 - 2 = 3	(4) Lower Flexibility Limit -2.00%  Kgs bf  col. 8 * -1.5%
Feb-23	982,235	879,055	103,180	-245,286
Mar-23	1,075,769	1,088,945	(13,176)	-246,282
Apr-23	1,021,148	989,268	31,880	-247,034
May-23	1,037,332	970,412	66,920	-245,783
Jun-23	976,571	972,371	4,200	-245,997
Jul-23	1,016,575	992,522	24,053	-245,602
Aug-23	1,026,110	1,095,526	(69,416)	-245,823
Sep-23	1,019,102	1,206,036	(186,934)	-247,984
Oct-23	1,074,061	1,085,888	(11,827)	-247,883
Nov-23	1,051,030	1,113,766	(62,736)	-248,305
Dec-23	1,084,199	1,026,856	57,343	-248,718
Jan-24	1,081,769	984,061	97,708	-248,094
Feb-24	<b>1,009,290</b>	<b>913,694</b>	<b>95,596</b>	<b>-248,787</b>

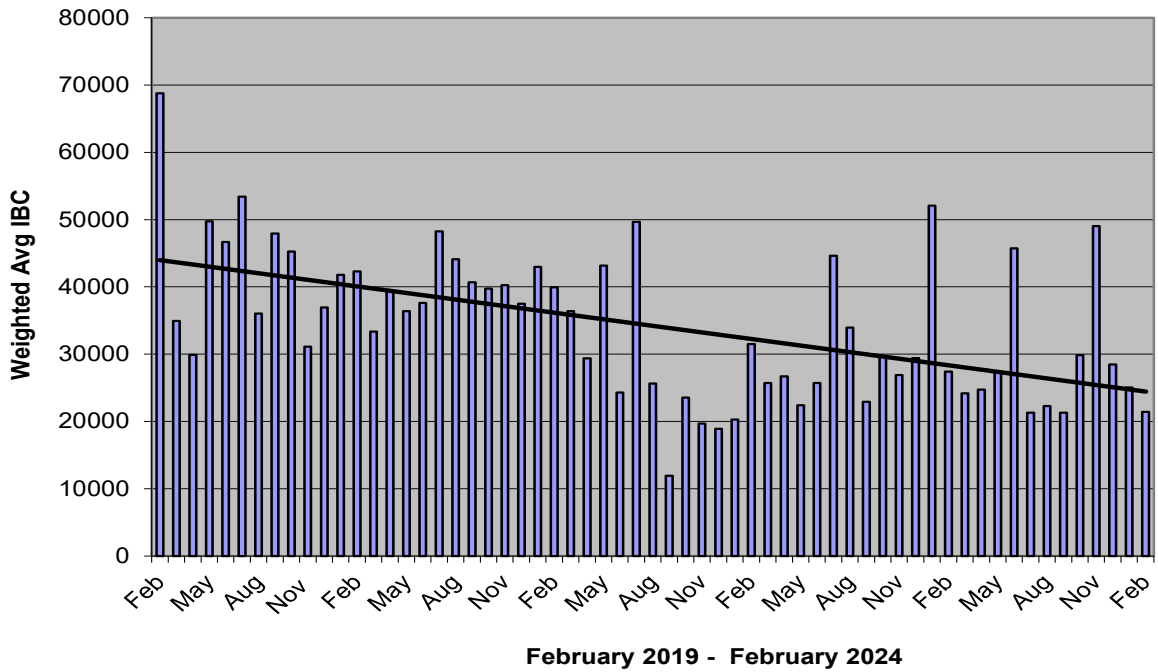
In February, Saskatchewan had a monthly CDC allocation of **913,694 kilograms** of butterfat. Saskatchewan production was **95,596** of butterfat over and cumulatively over by **1,306,739 kgs** of butterfat. On a percentage basis, Saskatchewan is **10.50%** above our CDC allocation flexibility limits based on the Continuous Quota model. The -2.00% lower flexibility limit is in effect.



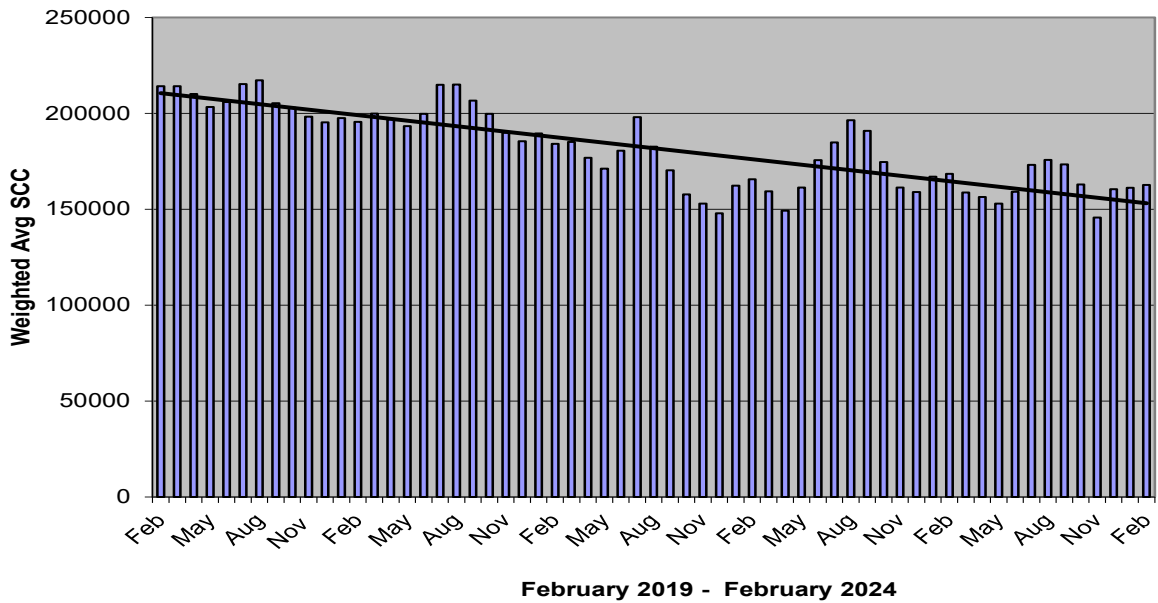
(5) Upper Flexibility Limit 1.25%	(6) Cumulative Over or (Under) Production with limits	(7) Cumulative Over or (Under) Production with limits (%)	(8) Rolling 12 Month Total Quota
Kgs bf	Kgs bf		Kgs bf
col. 8 *1.0%		col. 6 / 8	
153,304	1,235,663	10.08%	12,264,284
153,926	1,222,487	9.93%	12,314,103
154,396	1,254,367	10.16%	12,351,677
153,615	1,321,287	10.75%	12,289,164
153,748	1,346,282	10.95%	12,299,864
153,501	1,370,335	11.16%	12,280,090
153,640	1,300,919	10.58%	12,291,170
154,990	1,113,985	8.98%	12,399,196
154,927	1,102,158	8.89%	12,394,172
155,190	1,039,422	8.51%	12,415,228
155,449	1,113,434	8.95%	12,435,902
155,059	1,211,142	9.76%	12,404,706
<b>155,492</b>	<b>1,306,739</b>	<b>10.50%</b>	<b>12,439,345</b>

- (1) Monthly Production in Saskatchewan
- (2) Total Monthly Quota = Class 1 sales + Monthly MSQ + Carry Forward
- (3) Difference between the monthly production (1) and the total monthly quota (2)
- (4) The Lower Flexibility Limit is -2.00% of Rolling 12 Month Total Quota (9)
- (5) The Upper Flexibility Limit is 1.25% of Rolling 12 Month Total Quota (9)
- (6) Previous Month Cumulative Over or (Under) Production + Current Monthly Over or (Under) Production (capped at lower or upper limit if applicable)
- (7) Equal to Column (6) expressed as a percentage basis within the flexibility limits
- (8) Total Monthly CDC Quota Allocation for the previous 12 months

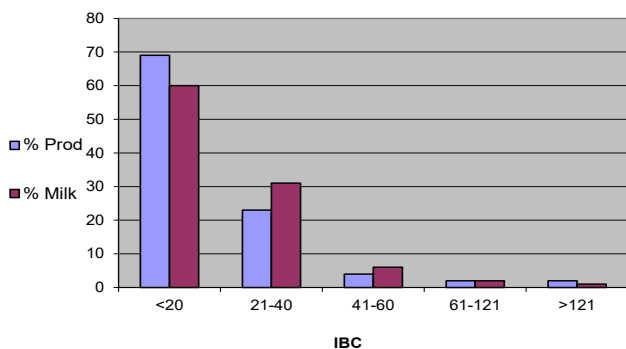
### Monthly Weighted Average IBC



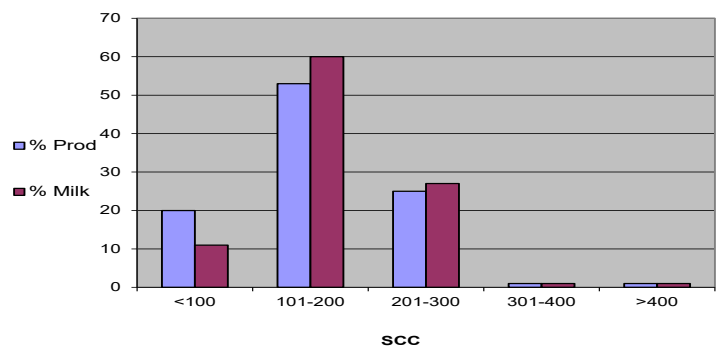
### Monthly Weighted Average SCC



February 2024



February 2024

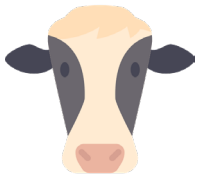




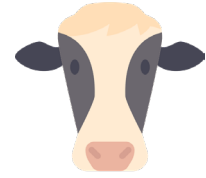
# February 2024 Quality Bonus

To get the quality bonus producers must have:  
 Monthly Average: IBC - <= 30,000/ ml    SCC- <= 250,000/ml  
 FPt- lower than -0.525°Hortvet  
 No positive inhibitors

101115806 SASKATCHEWAN LTD.** ADIT FARMS INC.**	DAUM DAIRIES**  DIAMOND HOLSTEINS LTD.*	HUTTERIAN BRETH CHURCH SPRING CREEK**  HUTTERIAN BRETH CHURCH SPRINGWATER**	KESSEL FAMILY FARM**  KIELSTRA HOLSTEINS INC.**	RYDALL LIVESTOCK LTD.*  SAND LAKE HUTTERIAN BRETHREN** Sandy Ridge Dairy Ltd.*
ARTLAND DAIRIES INC**	DOWNIE LAKE CHURCH COLONY**	HUTTERIAN BRETH OF PENNANT INC.*	KNITTIG FARMS LTD.*	
AURORA DAIRY INC.**	EAGLEWOOD HOLDINGS LTD**	HUTTERIAN BRETHREN CHURCH OF EAGLE CREEK INC.**	LAKEVIEW COLONY**	SCHAEFFER, RONALD J**
BAILDON HUTT BRETHREN INC.**	EARVIEW COLONY**	HUTTERIAN BRETHREN CHURCH OF LAJORD**	LAKEVIEW HOLSTEINSSCOTT COLONY** LTD.**	
BALGONIE HOLSTEINS LTD.**	EATONIA HUTTERIAN BRETHREN INC**	HUTTERIAN BRETHREN CHURCH OF QUILL LAKE INC.**	LEYENHORST, ALBERT & HEATHER**	SIERRA HUTTERIAN BRETHREN**
BENBIE HOLSTEINS LIMITED**	ELL'S DAIRY FARM 2010 INC.**	HUTTERIAN BRETHREN CHURCH OF SOUTHLAND INC.**	LOEWEN DARCY & ROSALIE*	SIMMIE HUTTERIAN BRETHREN CHURCH**
BENCH HUTTERIAN BRETHREN LTD**	EL-NELL FARMS LTD**	HUTTERIAN BRETHREN CHURCH OF SPRING LAKE INC.**	LOVHOLM HOLSTEINS**	SMILEY HUTTERIAN BRETHREN**
BERKHOUT, SIMON & ARJA**	ENNS FARMS LTD**	HUTTERIAN BRETHREN CHURCH OF TWIN CREEK INC.*	MAIN CENTRE DAIRY FARM**	STAR VALLEY FARM JOINT VENTURE**
BLU J FARMS**	FEHR'S RIVERFRONT FARM LTD.**	HUTTERIAN BRETHREN CHURCH PONTEIX**	MARFAY FARMS LIMITED**	SUNNYSIDE DAIRY**
BRAMVILLE JERSEYS**	FORD, JOHN N*	HUTTERIAN BRETHREN CYPRESS COLONY**	MCAVOY FARMS LTD**	THE HUTTERIAN BRETHREN CHURCH OF RIVERVIEW LIMITED** TOM & WENDY MUFFORD**
BRUINSDALE FARMS LTD.**	FOTH VENTURES LTD**	HUTTERIAN BRETHREN GOLDEN VIEW INC**	MCGEE COLONY**	
BUTTE COLONY**	FOX VALLEY FARMING CO. LTD**	HUTTERIAN BRETHREN OF DINSMORE**	MIL-EN-ROY FARMS (1981) LTD*	UNIV OF SASK, Animal & Poultry Science**
CARMICHAEL HUTTERIAN COLONY** CARONCREST FARMS LTD**	GLIDDEN HUTTERIAN BRETHREN**	HUTTERIAN BRETHREN OF ESTUARY CORP.**	NEUVIEW DAIRIES INC.**	VANGUARD HUTTERIAN BRETHREN** VANZESSEN DAIRY INC.**
CARTER WOODSIDE**	GREENDALE DAIRY**	HUTTERIAN BRETHREN OF MILDEN INC.**	Osler Dairy Farms Ltd.*	W.C.C. DAIRIES CORP.**
CHRIS-ADIE HOLSTEINS LTD.**	HAVERLAND DAIRY LTD.**	HUTTERIAN BRETHREN OF WEST BENCH**	PLUM BLOSSOM FARM LTD.(SASK)**	WALDECK HUTTERIAN BRETHREN*
CLEAR SPRING COLONY**	HIDDEN HILL DAIRY LTD.**	J & J BOOT DAIRY LTD. #2**	PRAIRIE WEST DAIRIES INC.**	WALLYWAY FARMS LTD.**
CORNELIUS & TRACY WIEBE**	HIGHDALE FARMS LTD.**	JAYLEE FARMS INCORPORATED**	Q VALLEY FARM LTD.**	WESTERN DAIRY FARMS (2016) LTD. #1*
COUNTRY HILLS HUTTERIAN BRETHREN INC.* CRAILA DAIRY LTD**	HILLSVALE COLONY**	JBK FARMS LTD.*	R & F LIVESTOCK INC.**	WESTWIKK FARMS**
DALKIM HOLSTEINS LTD.**	HUTT. BRETHREN CHURCH OF BOX ELDER*	K & K THONER DAIRY LTD.**	RIVER VALLEY HOLSTEINS LTD.**	WHEATLAND HUTT BRET OF CABRI INC**
DALVOORDE DAIRIES LTD.**	HUTTERIAN BRETH CHURCH ARM RIVER**	KEN & KAREN GIESBRECHT**	ROBELLA HOLSTEINS**	WILLOW PARK COLO- NY**



# Who Should I Call?



Who at the SaskMilk office should producers call?  
Here's a handy guide!

FOR

CALL

AT

<ul style="list-style-type: none"> <li>• Sponsorship Requests</li> <li>• Donation Requests</li> <li>• Dairyanna's Costume and Events</li> <li>• School Milk Program</li> <li>• Nutrition Resource Ordering</li> </ul>	Anita Medl	306-721-9483
<ul style="list-style-type: none"> <li>• Quota Exchange and Private Quota Transfers</li> <li>• Leases</li> <li>• Transfer Credits</li> <li>• Security Applications</li> <li>• Projections for production</li> <li>• Name Changes</li> <li>• Designation of Signing Authority</li> <li>• Monthly production numbers for producers</li> </ul>	Bev Solie	306-721-9488
<ul style="list-style-type: none"> <li>• Website enquiries</li> <li>• Newsletter advertising</li> <li>• Dairy Conference</li> </ul>	Cailyn Jones	306-540-3639
<ul style="list-style-type: none"> <li>• School Milk Program</li> <li>• Marketing Activities</li> <li>• Social media enquiries (Twitter, Instagram, Facebook)</li> <li>• Promotional Items</li> </ul>	Chelsea Wilcoxon	306-527-0753
<ul style="list-style-type: none"> <li>• Producer statements</li> <li>• Banking info for direct deposit of milk pay</li> <li>• Milk pick-up issues –variances in volumes, planning to quit shipping, etc.</li> </ul>	Darlene Weighill	306-721-9491
<ul style="list-style-type: none"> <li>• On Farm- licensing, facilities, equipment, driveways, yards, animal care</li> <li>• Lab testing results</li> <li>• Pro Action- Food Safety (CQM), Animal Care, Traceability, Biosecurity, Environment</li> <li>• Extension services</li> </ul>	Tina Leverton	306-721-9486
<ul style="list-style-type: none"> <li>• Monthly milk prices paid to producers</li> <li>• Provincial &amp; National production updates</li> </ul>	Doug Miller	306-721-9485
<ul style="list-style-type: none"> <li>• On Farm- licensing, facilities, equipment, driveways, yards, animal care</li> <li>• Bulk truck drivers- licensing, complaints/issues</li> <li>• Bulk tank calibrations</li> <li>• Rayner Dairy Centre &amp; Research</li> <li>• Environment and Regulatory</li> </ul>	Chris Pinno	306-721-9494
<ul style="list-style-type: none"> <li>• SaskMilk Portal Assistance</li> <li>• Website enquiries</li> <li>• Newsletter advertising</li> <li>• Dairy Conference</li> </ul>	Jenn Buehler	306-721-9492
<ul style="list-style-type: none"> <li>• Website enquiries</li> <li>• Newsletter advertising</li> <li>• Policy</li> <li>• Media or news stories or if you have been contacted by any media agency or reporter</li> </ul>	Julie Ell	306-519-3136

## Classified Ad Service

SaskMilk offers a free classifieds service as part of its newsletter. Anyone wishing to place an ad is welcome to contact the SaskMilk office at (306) 949-6999 or [info@saskmilk.ca](mailto:info@saskmilk.ca). All negotiations will be independent of SaskMilk. Please note that ads will be posted in two issues and will then be removed unless SaskMilk is notified otherwise.

## For Sale - Dairy Equipment

- 2000 gal. Delaval Tank
- Double 6 Delaval Parlour Milk Equipment
- Variable Speed Vacuum Pump
- Air Compressor
- Gas Water Heaters
- Gas Barn Heaters
- Jiffy Manure Equipment
  - o Pump
  - o Agitators
  - o Scrapers
  - o 200 foot chain

**Contact: Louac Holsteins  
Isaac Klassen (306) 220-2219**

### Reminder!

The deadline date for Quota Transfer, Quota Exchange, and 10% Transfer Limit Exemptions is the 6th of each month

Your Quota Transfer, and 10% Exemption Applications must be received on or before the 6th of the month in order to be effective the 1st of the following month

Quota Exchange forms must be received in the SaskMilk office on or before the 6th of the month for that month's Exchange.

## SaskMilk Board of Directors

### Gordon Ell

Chair

(306) 535-1922

[gt.ell@sasktel.net](mailto:gt.ell@sasktel.net)

### Anthony Nienhuis

Vice-Chair

(306) 221-1598

[nienhuis@sasktel.net](mailto:nienhuis@sasktel.net)

### Merlis Wiebe

2nd Vice-Chair

(306) 229-0696

[merlisw@gmail.com](mailto:merlisw@gmail.com)

### Matthew Flaman

(306) 537-9634

[flamanmj@gmail.com](mailto:flamanmj@gmail.com)

### Melvin Foth

(306) 232-3462

[mel.foth56@gmail.com](mailto:mel.foth56@gmail.com)

### Derek Westeringh

(306) 716-1959

[derekw@westbow.ca](mailto:derekw@westbow.ca)

### Leonard Wipf

(306) 491-0432

[leonard.countryclover@gmail.com](mailto:leonard.countryclover@gmail.com)