

SaskMilk

In this Issue:

Advocacy Day Recap	2
Mental Health Spotlight	3
Quota Exchange	6
Production	10
In the Community	14
Quality Bonus	17
Classifieds	18

Each year during the month of March, Dieticians of Canada presents Nutrition Month to celebrate food and healthy eating. Dairy Farmers of Canada (DFC) is proud to sponsor Nutrition Month again in 2022. This year's theme is "Ingredients for a Healthier Tomorrow" with a focus on sustainable food-systems. SaskMilk is working in conjunction with DFC to promote milk as an important part of a healthy and sustainable diet.

The February sustainability announcement to target net-zero greenhouse gas emis-



Nutrition Month 2022

sions on-farm by 2050 with a 30% reduction in greenhouse gases by 2030 highlights the importance of environmental sustainability to the Canadian dairy industry. And, because it is important to promote diets that meet nutrition needs but are also sustainable, highly nutritious milk, cheese and yogurt go hand-in-hand with Nutrition Month's healthy eating goals.

Throughout the month, SaskMilk will be using social media to educate the public on the health benefits of dairy products. Some nutritional dairy facts and figures include:

- ' From 1990 to 2019, the carbon footprint of a litre of Canadian milk decreased by 24%
- ' You would need to eat 8 cups of spinach to consume the same amount of calcium in a single glass of milk.
- ' Milk contains 6 of the 8 nutrients most Canadians are lacking: calcium, magnesium, zinc, vitamin A, vitamin D, and potassium.
- ' Some research shows that up to 40% of the calcium

added to plant-based beverages can stick to the bottom of the container even when shaken vigorously.

We encourage you to follow along on our social media platforms to help expand our reach and engagement with the public. You can find SaskMilk on Facebook, Instagram and Twitter, under the username "SaskMilk". To find out more about Nutrition Month 2022, visit whatyoueat.ca.



Ingredients for a healthier tomorrow.



nutritionmonth2022.ca
whatYOUeat.ca

Good for you. Good for the planet.



Presented by
Dietitians of Canada



Sponsor of Dietitians of Canada's
Nutrition Month 2022



Advocacy Day Recap

On February 1st, dairy farmers from across Canada met with provincial MPs and Senators for the annual Advocacy Day (formerly known as Lobby Day) to discuss current issues facing the dairy industry. While these meetings took place virtually again this year due to COVID-19, they were still an effective medium to connect with our local politicians.

This year, conversations were held regarding current and future trade deals, providing exemption to nutritious dairy products for policies under the Healthy Eating Strategy (such as front-of-package labeling and Marketing to Kids), CUSMA compensation, support of green technology advancements on farm, the Grocery Code of Conduct, and increased training and support for border enforcement to track dairy products entering the country.

SaskMilk provided various resources to the MPs and Senators to help further educate them on the challenges of the dairy industry. Each politician also received a follow-up from the office to thank them for their time and encourage them to reach out with additional questions or to schedule further meetings.

Mental Health Spotlight



Why Can't You "Just Get Over" a Mental Health Condition?

By Lesley Kelly, Farmer and Co-Founder of the Do More Agriculture Foundation

"Can't you stop being so lazy?"

"Why don't you quit worrying?"

"Just be happy already."

"Change your thinking."

"Can't you just get over it?"

When you or someone you know suffers from a mental health injury or illness, it can be hard and frustrating. It can be even more frustrating when you hear statements like 'just get over it' or others try to convince you to "just be happy." You might even start to think of things like "Why can't I just get over it?"

Mental health injuries and mental illness affects everyone differently. For some people, it comes and goes. For others, it can feel almost constant. You might experience one episode of depression or an anxiety attack, or it might be a lifelong struggle. You might experience multiple illnesses over time, or all at once.

When it comes to mental health, there are many things that are outside of our control that prevent us from "just getting over it." Often there is a chemical imbalance or genetic predisposition to mental health issues. While some of the factors in mental health can be genetic, there are also environmental factors that can contribute to mental health. If you are constantly surrounded by unhealthy things, it can make it very difficult to change how you feel. In addition, when you have experienced a significant trauma, loss or been involved in an accident, your brain responds in ways that are often beyond your control.

It's hard to predict what your experience with mental illness will be. But if your symptoms are severe, or if you've experienced multiple types of mental illness, it's not likely to go away on its own—and if it does, it may come back. The good news is that with the right attention and help, illnesses are treatable and improvement is possible.

Unfortunately, the "just get over it" phrase is still something we hear over again and isn't helpful advice for a person living with a mental illness. When someone breaks their leg, we wouldn't expect them to just get over it. Nor would we blame them if they needed a cast or other help in their daily life while they recovered.

When we tell someone to get over their illness, we trivialize their condition and deny their pain. For example, for those with depression, "cheering up" is not a simple task, and it's important to recognize that they probably wish they could, too. "Getting over it" also diminishes the fact that mental illnesses are serious health conditions, and reduces it to something that can be fixed just by changing

their thinking habits. People living with mental illness are aware that life isn't fair and can be challenging. Reminding them of this fact doesn't help them cope with their illness.

What might feel like a beautiful day to you could be a much different picture for someone with a mental illness or injury, who may have difficulty seeing the same joy you recognize in everyday life. Implying that the person should feel happy ignores their condition and may make them feel guilty.

Instead, try some of these statements:

I'm sorry you're not feeling well. Is there anything I can do to help?

I will try my best to understand.

I can see that you're struggling, and I really admire/respect you for pushing through this.

What you're going through is real, and I think that almost anyone in your situation would feel that way.

Can I come over and keep you company?

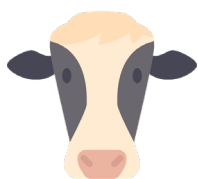
Would you like to go for a walk or drive with me?

Mental health injuries and illnesses are real and can be very painful. Learning why mental illnesses need to be taken seriously can help save someone you love from a life lived in pain. To help them through a challenging time, compassionate statements, learning about and understanding what they are going through and being there for them can make a world of difference.

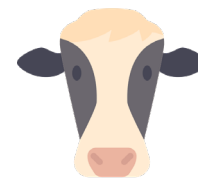
If you or someone you know needs help, reach out for mental health support by visiting [Do More Ag resources](#).

The Do More Agriculture Foundation is not intended to be a substitute for professional medical advice, diagnosis, or treatment. If you are in crisis, please visit your local emergency department or call 911 immediately.

The Do More Agriculture Foundation is the national voice and champion for mental health in Canadian agriculture and is changing the culture of agriculture to one where all producers are encouraged, supported, and empowered to take care of their mental wellbeing. Producers are among the most vulnerable when it comes to mental health issues. By collaborating with the entire industry and those working to address the state of mental health in Agriculture, we can and will make a substantial impact.



Who Should I Call?



Who at the SaskMilk office should producers call?
Here's a handy guide!

FOR	CALL	AT
<ul style="list-style-type: none"> ' Sponsorship Requests • donation Requests • Dairyanna's Costume and Events • School Milk Program • Nutrition Resource Ordering 	Anita Medl	306-721-9483
<ul style="list-style-type: none"> ' Quota Exchange and Private Quota Transfers • Leases • Transfer Credits • Security Applications • Projections for production • Name Changes • Designation of Signing Authority • Monthly production numbers for producers 	Bev Solie	306-721-9488
<ul style="list-style-type: none"> ' School Milk Program • Marketing Activities 	Chelsea Wilcoxon	306-527-0753
<ul style="list-style-type: none"> ' Producer statements • Banking info for direct deposit of milk pay • Milk pick-up issues -variances in volumes, planning to quit shipping, etc. 	Darlene Weighill	306-721-9491
<ul style="list-style-type: none"> ' On Farm- licensing, facilities, equipment, driveways, yards, animal care • Lab testing results • Pro Action- Food Safety (CQM), Animal Care, Traceability, Biosecurity, Environment • Extension services 	Tina Leverton	306-721-9486
<ul style="list-style-type: none"> ' Monthly milk prices paid to producers • Provincial & National production updates 	Doug Miller	306-721-9485
<ul style="list-style-type: none"> ' On Farm- licensing, facilities, equipment, driveways, yards, animal care • Bulk truck drivers- licensing, complaints/issues • Bulk tank calibrations ' Rayner Dairy Centre & Research ' Environment and Regulatory 	Chris Pinno	306-721-9494
<ul style="list-style-type: none"> ' SaskMilk Portal Assistance 	Jenn Buehler	306-721-9492
<ul style="list-style-type: none"> ' Media or news stories or if you have been contacted by any media agency or reporter • Trade agreements, international trade updates • DEAP policy/program enquiries • Research enquiries or proposals 	Joy Smith	306-721-9482
<ul style="list-style-type: none"> ' Social media enquiries (Twitter, Instagram, Facebook) • Website enquiries • Newsletter advertising • Dairy Conference 	Rigel Smith	306-721-9493

Revised Quota Exchange

The market-clearing price established for the March 2022 Quota Exchange was \$49,025.

The next Quota Exchange will be held on April 18, 2022. All offers to sell and bids to purchase quota through the Quota Exchange must be submitted by midnight, April 6, 2022. SaskMilk recommends that offers and bids be submitted well in advance of the deadline date to ensure adequate time for corrections, if necessary.

When making bids on the Quota Exchange, the price on offers to sell quota is the minimum price that the producer is prepared to accept for that quota. Only if the market-clearing price is equal to or greater than the producer's minimum price will that producer qualify for participation in the Exchange. Conversely, the price on offers to purchase quota is the maximum price that the producer is prepared to pay for that quota. Only if the market-clearing price is equal to or less than the producer's maximum price will that producer qualify for participation in the Exchange. The clearing price is set at the price where the smallest difference exists between the accumulated volume offered for sale and the accumulated volume bid to purchase. The results of the Quota Exchange are outlined in the following table.

MARCH 2022 QUOTA EXCHANGE RESULTS

Market Clearing Price per kilogram of butterfat	49,025.00
Daily Kilograms offered to Purchase	160.50
Kilograms offered to Sell	55.38
Kilograms sold	50.00
Number of Producers	
- offered to purchase	20
- purchased quota	5
- offered to sell	7
- sold quota	6

MARCH 2022 QUOTA EXCHANGE CLEARING PRICE RESULTS

Price (\$/daily kg b.f.)	No. of Sellers	Cumulative Sellers	Daily Kgs b.f. offered for sale	Cumulative sales	Cumulative Sales less Cumulative purchases	Cumulative purchases	Daily Kgs b.f. offered to purchase	Cumulative bidders	No. of buyers
\$42,100.00	0	0	0.00	0.00	-160.50	160.50	10.00	20	1
\$42,400.00	0	0	0.00	0.00	-150.50	150.50	10.00	19	1
\$45,000.00	0	0	0.00	0.00	-140.50	140.50	5.00	18	1
\$46,000.00	1	1	1.20	1.20	-134.30	135.50	5.00	17	1
\$46,500.00	1	2	10.00	11.20	-119.30	130.50	0.00	16	0
\$47,000.00	2	4	14.18	25.38	-105.12	130.50	0.00	16	0
\$47,500.00	1	5	12.00	37.38	-93.12	130.50	0.00	16	0
\$47,600.00	0	5	0.00	37.38	-93.12	130.50	10.00	16	1
\$47,900.00	0	5	0.00	37.38	-83.12	120.50	10.00	15	1
\$48,000.00	0	5	0.00	37.38	-73.12	110.50	10.00	14	1
\$48,250.00	1	6	13.00	50.38	-50.12	100.50	1.50	13	1
\$48,500.00	0	6	0.00	50.38	-48.62	99.00	27.00	12	4
\$48,600.00	0	6	0.00	50.38	-21.62	72.00	10.00	8	1
\$49,000.00	0	6	0.00	50.38	-11.62	62.00	12.00	7	2
\$49,025.00	0	6	0.00	50.38	0.38	50.00	10.00	5	1
\$49,300.00	0	6	0.00	50.38	10.38	40.00	10.00	4	1
\$50,000.00	1	7	5.00	55.38	25.38	30.00	10.00	3	1
\$50,250.00	0	7	0.00	55.38	35.38	20.00	10.00	2	1
\$50,500.00	0	7	0.00	55.38	45.38	10.00	10.00	1	1

TRANSFER CREDIT SUMMARY REPORT			
MONTH	# OF PRODUCERS TRANSFER IN	# OF PRODUCERS TRANSFER OUT	TOTAL KGS OF BUTTERFAT
February, 2021	13	13	8,529
March	9	9	10,120
April	10	10	10,680
May	13	13	7,349
June	9	9	5,750
July	15	15	7,959
August	27	27	29,932
September	28	28	17,706
October	31	31	16,159
November	21	21	10,059
December	18	18	15,526
January, 2022	12	12	7,006
February, 2022	7	7	5,438

PRIVATE TRANSFERS PROCESSED	
MONTH	DAILY KILOGRAMS
February, 2021	0.00
March	578.58
April	40.00
May	0.00
June	0.00
July	188.98
August	0.00
September	1,694.55
October	85.16
November	0.00
December	0.00
January	0.00
February, 2022	0.00

OVER QUOTA (OVER 5 DAYS) REPORT BY MONTH		
MONTH	# OF PRODUCERS	KGS BUTTERFAT
February, 2021	9	1,496
March	25	1,690
April	20	654
May	18	781
June	11	200
July	0	0
August	5	528
September	4	369
October	9	2,599
November	10	1,353
December	29	957
January	24	419
February, 2022	21	1,270

SUMMARY REPORT OF CREDITS JANUARY 2022- 155 PRODUCERS

DAYS	# OF PRODUCERS	POSITIVE CREDITS ACCUMULATED (KGS OF BUTTERFAT)
+ 5	7	4032
0 to + 5	60	35,001
TOTAL	67	39,033
DAYS	# OF PRODUCERS	NEGATIVE CREDITS ACCUMULATED (KGS OF BUTTERFAT)
-15	2	1,939
-10 to -15	9	9,254
-5 to -10	26	34,031
0 to -5	51	33,406

LOST OPPORTUNITY REPORT

MONTH	# OF PRODUCERS	LOST OPPORTUNITY (KGS OF BUTTERFAT)
February, 2021	2	365
March, 2021	2	522
April, 2021	2	846
May, 2021	3	1,573
June, 2021	3	2,065
July, 2021	4	2,807
August, 2021	3	1,502
September, 2021	2	972
October, 2021	1	63
November, 2021	2	442
December, 2021	3	1,624
January, 2022	2	800
Febrary, 2022	2	264

WEIGHTED AVERAGE COMPONENT TESTS & PRICES DECEMBER 2021

COMPONENTS	AVERAGE TEST	PRICE PER KILOGRAM CLASS 1 TO 5
Butterfat	4.2285	17.999608
Protein	3.3394	2.681275
Other Solids	5.9104	0.757470

The average butterfat price received per kilogram was \$21.18.

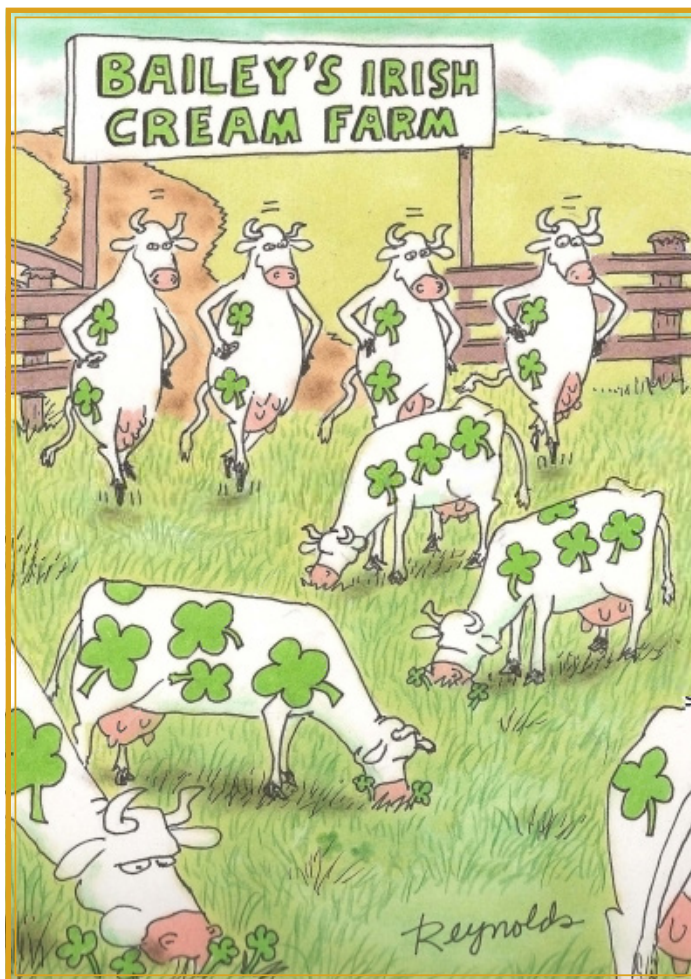
Milk Sale Revenue	\$19,785,734.44
WMP Revenue/<Expense>	\$516,367.75
Total Revenue	\$20,302,102.19

Farmer Sustainability Advisory Group

Dairy Farmers of Canada is putting together a Farmer Sustainability Advisory Group to help inform the industry’s new sustainability measures.

It is very important that farmers are constantly involved in the goal of net-zero greenhouse gas emissions by 2050, and it is also important that farmers from each region/province are well-represented as they all have unique circumstances and perspectives.

The commitment is minimal and is expected to be approximately two hours every other month between March and July 2022. Participation in each session is voluntary and farmers can choose whether to attend each session based on the agenda and their area of interest. To register, please visit [this link](#).

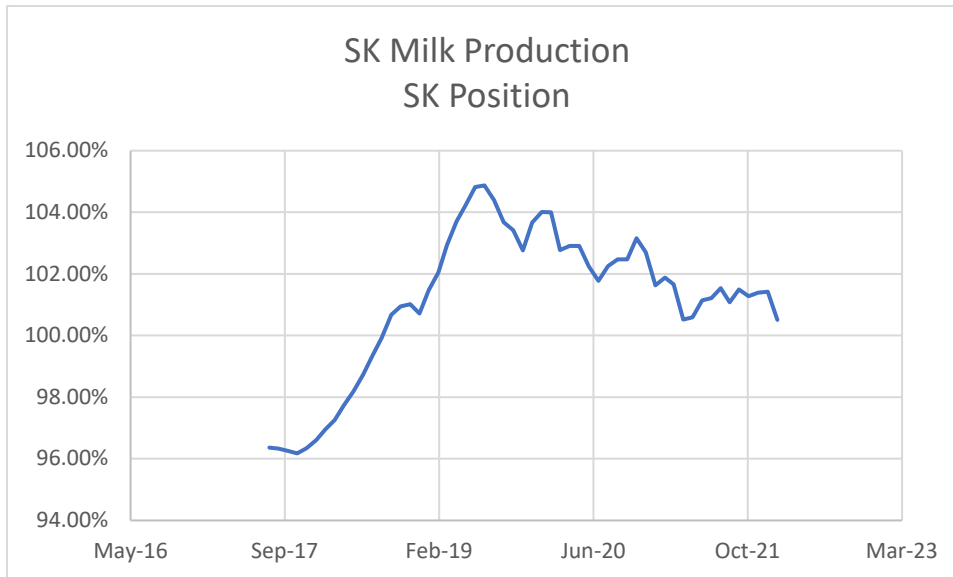


	(1) Monthly Total Production Kgs of bf	(2) Total Monthly CDC Quota Allocation Kgs bf	(3) Monthly Over or (Under) Production Kgs bf col. 1 - 2 = 3	(4) Lower Flexibility Limit -2.00% Kgs bf col. 8 * -1.5%
Feb-21	995,725	864,139	131,586	-245,225
Mar-21	1,065,238	1,109,168	(43,930)	-245,938
Apr-21	1,011,886	1,032,209	(20,323)	-249,271
May-21	1,047,519	964,511	83,008	-249,621
Jun-21	1,005,130	935,573	69,557	-248,539
Jul-21	1,034,538	1,046,959	(12,421)	-248,472
Aug-21	1,060,693	1,003,625	57,068	-248,435
Sep-21	1,029,716	1,103,381	(73,665)	-249,697
Oct-21	1,077,007	1,086,342	(9,335)	-248,425
Nov-21	1,043,347	1,098,648	(55,301)	-248,838
Dec-21	1,067,341	1,082,184	(14,843)	-247,717
Jan-22	1,057,865	1,007,352	50,513	-246,682
Feb-22	959,825	940,718	19,107	-248,213

In February Saskatchewan had a monthly CDC allocation of **940,718 kilograms** of butterfat. Saskatchewan production was **19,107 kgs** of butterfat over and cumulatively over by **933,193 kgs** of butterfat. On a percentage basis, Saskatchewan is **7.52%** above our CDC allocation flexibility limits based on the Continuous Quota model. The -2.00% lower flexibility limit is in effect.

(5) Upper Flexibility Limit 1.25%	(6) Cumulative Over or (Under) Production with limits	(7) Cumulative Over or (Under) Production with limits (%)	(8) Rolling 12 Month Total Quota
Kgs bf	Kgs bf		Kgs bf
col. 8 *1.0%		col. 6 / 8	
153,266	780,919	6.37%	12,261,248
153,711	736,989	5.99%	12,296,905
155,794	716,666	5.75%	12,463,534
156,013	799,674	6.70%	12,481,039
155,337	906,185	7.29%	12,426,948
155,295	893,764	7.19%	12,423,582
155,272	950,832	7.81%	12,421,767
156,061	895,958	7.18%	12,484,861
155,266	886,623	7.14%	12,421,264
155,524	831,322	7.06%	12,441,914
154,823	863,573	6.97%	12,385,871
154,176	914,086	7.41%	12,334,091
155,133	933,193	7.52%	12,410,670

- (1) Monthly Production in Saskatchewan
- (2) Total Monthly Quota = Class 1 sales + Monthly MSQ + Carry Forward
- (3) Difference between the monthly production (1) and the total monthly quota (2)
- (4) The Lower Flexibility Limit is -2.00% of Rolling 12 Month Total Quota (9)
- (5) The Upper Flexibility Limit is 1.25% of Rolling 12 Month Total Quota (9)
- (6) Previous Month Cumulative Over or (Under) Production + Current Monthly Over or (Under) Production (capped at lower or upper limit if applicable)
- (7) Equal to Column (6) expressed as a percentage basis within the flexibility limits
- (8) Total Monthly CDC Quota Allocation for the previous 12 months



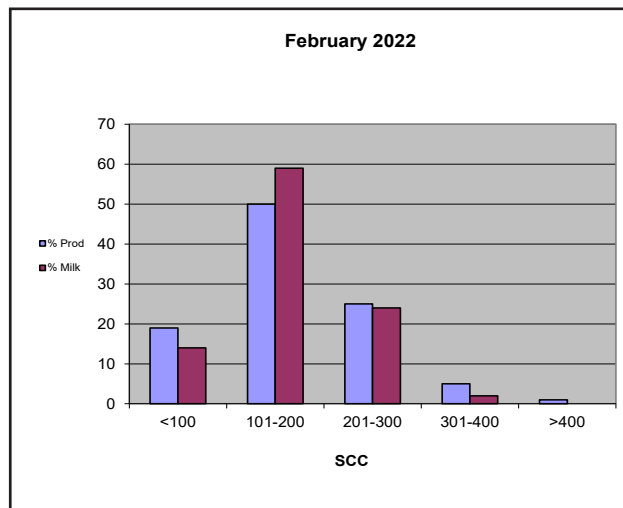
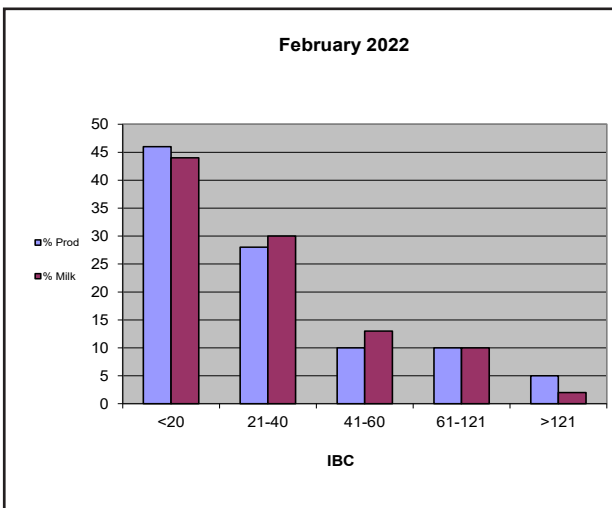
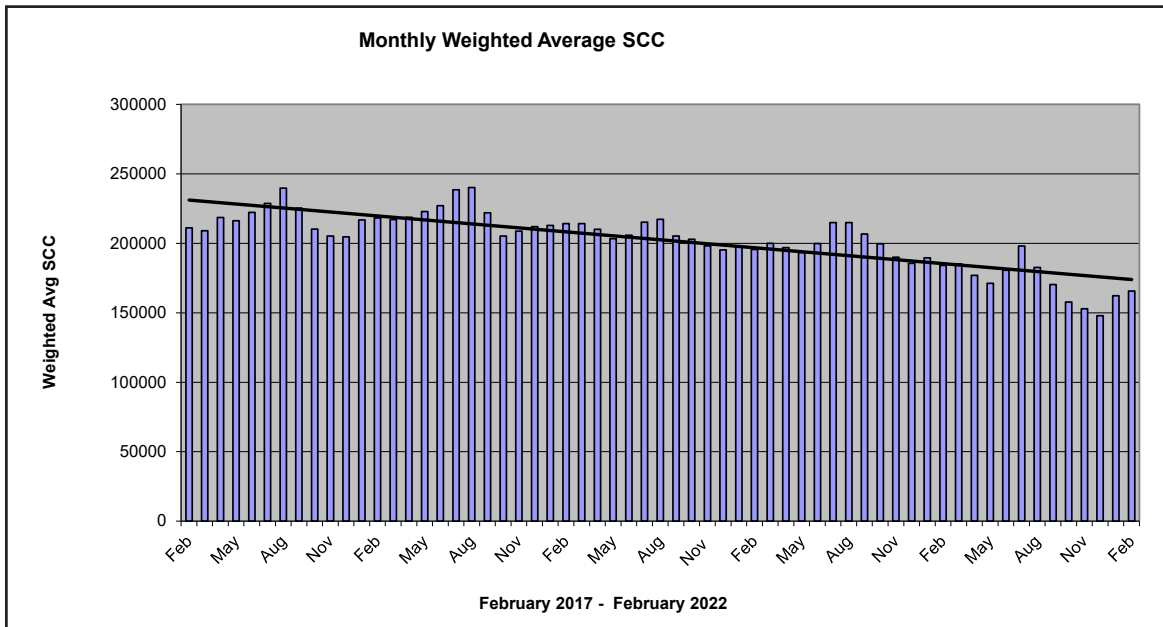
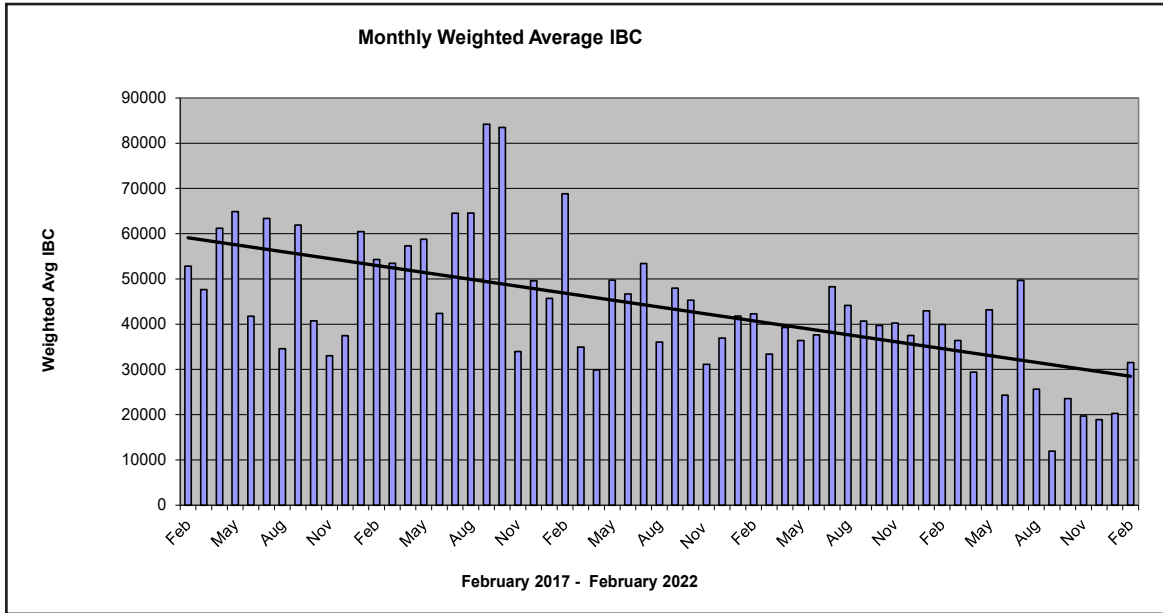
Beta-lactam Drug	Detection Level† (ppb*)	US Safe Level or Tolerance / Canadian MRL (ppb*)	Sulfa Drug	Detection Level† (ppb*)	US Safe Level or Tolerance / Canadian MRL (ppb*)
Amoxicillin	3.1	10 / None	Sulfadimethoxine	4.7	10 / 10∞
Ampicillin	7.7	10 / 10	Sulfamethazine	7.7	10 / 10∞
Ceftiofur and Metabolites^	53	100 / 100	Tetracycline Drug	Detection Level† (ppb*)	US Safe Level/ Tolerance / Canadian MRL (ppb*)
Cephapirin	14	20 / 20	Chlortetracycline	54	300 / 100
Cloxacillin	7.4	10 / None	Oxytetracycline	66	300 / 100
Penicillin G	2.2	5 / 6&	Tetracycline	21	300 / 100

† Positive at least 90% of the time with 95% confidence.
 * parts per billion or ng/mL
 ^ Ceftiofur parent drug sensitivity is approximately 1/2 that reported in the table.
 & Canadian MRL for penicillin G is 0.01 IU/ml, equivalent to 6 ppb.
 ∞ Canadian MRL for sulfa drugs are singly or in combination with other MRL listed sulfonamides.

Test stations are located at the following locations:

REGION	LOCATION	CONTACT
Swift Current, SK	Agrifoods Truck Bay	675 Cheadle Street W., 306-773-1097 or Roger Ruf 306-741-3261
Star City, SK	Star City Colony	Reuben Tschetter, 306-921-9381
Saskatoon, SK	Agrifoods Truck Bay (east of Saputo receiving bay)	Mike V. or Mike K., 306-664-0202 After hours: 306-668-8135
Emerald Park, SK	Warman Veterinary Services	86 Great Plains Rd, SK S4L 1C9 Phone: (306) 347-9995

Charm tests strips and Charm testers are now available for purchase through SaskMilk. Agrifoods is now carrying SNAP test kits for tetracyclines as well as beta lactams. For further information contact: SaskMilk 306-949-6999.



In the Community

Check out these SaskMilk events!

MARCH

March 5 – 6	Kinsmen Foundation/Telemiracle 46
March 11 – 12	SHSAA Provincial Curling – Provincial Locations
March 11 – 13	Tavria Dance Festival
March 12	Schizophrenia Society of Saskatchewan – Regina
March 12	Drake Nokomis U9 Hockey Tournament
March 17	Regina Early Learning Centre – Small Hands Big Dreams - Regina
March 18 – 19	SHSAA Provincial Wrestling - Saskatoon
March 24 – 26	SHSAA Provincial Basketball – Hoopla – Regina
March 26	Queen City Volleyball Club U15 Tournament - Regina

APRIL

April 1 – 2	2022 Jersey Canada AGM - Manitou Springs
April 22 – 24	Best in the West Curling Championship - Saskatoon
April 23 – 24	4-H Beef Grooming and Open Judging - Lloydminster
April 29 – 30	Conexus Arts Centre – Taste of Spring – Regina

MAY

May	2022 Spring Country Cookout
May – September	Viking Cricket Club – Regina
May 5	U of R Presidents Luncheon - Regina
May 14	SHSAA Provincial Badminton – Rosthern
May 14	Excel Athletica - Regina Spring Classic - Regina



A grade 3 class at Father Vachon school in Saskatoon was surprised with a Valentine's Day pizza and milk party!

Dairyanna made an appearance at Father Vachon's school pictured alongside SaskMilk's Marketing Assistant Chelsea Wilcoxon.





DREAM. GROW. THRIVE.

You're invested
in your business

So are we

Partner with the only lender
100% invested in Canadian
agriculture and food.

1-800-387-3232 | fcc.ca

February Quality Bonus

To get the quality bonus producers must have:

Monthly Average:

IBC - \leq 30,000/ ml

SCC- \leq 250,000/ml

FPT- lower than -0.525°Hortvet

No positive inhibitors

*represent # of months the quality bonus has been received

AARRESTAD, PHILLIP & DANITA*	HILLSVALE COLONY*	MIL-EN-ROY FARMS (1981) LTD*	VANGUARD HUTTERIAN BRETHERN*	WESTWIKK FARMS*
BAILDON HUTT BRETHERN INC.*	HODGEVILLE COLONY*	STAR VALLEY FARM JOINT VENTURE*	WHEATLAND HUTT BRET OF CABRI INC*	HUTTERIAN BRETHERN OF MILDEN INC.*
HUTTERIAN BRETHERN CHURCH OF BEECHY*	HUTTERIAN BRETHERN CHURCH ARM RIVER*	HUTTERIAN BRETHERN CHURCH OF QUILL LAKE INC.*	DALKIM HOLSTEINS LTD.*	Grassy Hill Colony*
HUTTERIAN BRETHERN CHURCH OF TWIN CREEK INC.*	HUTTERIAN BRETHERN CHURCH SPRING CREEK*	LEYENHORST, ALBERT & HEATHER*	Q VALLEY FARM LTD.*	MCGEE COLONY*
CARONCREST FARMS LTD*	HUTTERIAN BRETHERN OF KYLE*	VANZESSEN DAIRY INC.*	WALLYWAY FARMS LTD.*	HUTTERIAN BRETHERN CHURCH OF SOUTHLAND INC.*
CLEAR SPRING COLONY*	HUTTERIAN BRETHERN CHURCH OF LAJORD*	RIBSTONE HUTTERITE COLONY*	BLU J FARMS*	SIERRA HUTTERIAN BRETHERN*
CRAILA DAIRY LTD*	HUTTERIAN BRETHERN OF DINSMORE*	The Hutterian Brethren Church of Riverview Limited*	MARFAY FARMS LIMITED*	ADIT FARMS INC.*
BENBIE HOLSTEINS LIMITED*	ROSETOWN FARMING CO. LTD.*	ROBELLA HOLSTEINS*	HIGHDALE FARMS LTD.*	KEN & KAREN GIESBRECHT*
LOVHOLM HOLSTEINS*	HUTTERIAN BRETHERN OF WEST BENCH*	JIMLEE FARMS LTD.*	WILLOW PARK COLONY*	BERG DAIRIES*
DOWNIE LAKE CHURCH COLONY*	SEPTEMBER SUN ACRES LTD.*	E.S.B. HOLDINGS LTD.*	K & K THONER DAIRY LTD.*	RICHARD VAN DONGEN*
EATONIA HUTTERIAN BRETHERN INC*	JAYLEE FARMS INCORPORATED*	SAND LAKE HUTTERIAN BRETHERN*	KIELSTRA HOLSTEINS INC.*	RYDALL LIVESTOCK LTD.*
EL-NELL FARMS LTD*	KENSTAL FARMS INC.*	PRAIRIE WEST DAIRIES INC.*	SPRING LAKE COLONY*	HYLJON HOLSTEINS LTD.*
ELL'S DAIRY FARM 2010 INC.*	KESSEL FAMILY FARM*	101115806 SASKATCHEWAN LTD.*	BUTTE COLONY*	DAUM DAIRIES*
BRUINSDALE FARMS LTD.*	102122067 Saskatchewan Ltd.*	DARIAN FARMS LTD.*	BRAMVILLE JERSEYS*	FOX VALLEY FARMING CO. LTD*
ENNS FARMS LTD*	KNITTIG FARMS LTD.*	SIMMIE HUTTERIAN BRETHERN CHURCH*	EARVIEW COLONY*	GLIDDEN HUTTERIAN BRETHERN*
W.C.C. DAIRIES CORP.*	ARTLAND DAIRIES INC*	SMILEY HUTTERIAN BRETHERN*	BARMOOR FARMS LTD.*	MAIN CENTRE DAIRY FARM*
FEHR'S RIVERFRONT FARM LTD.*	LAKEVIEW COLONY*	SPRUCE LANE AG VENTURES CORP.*	SUNNYSIDE DAIRY*	UNIV OF SASK, Animal & Poultry Science*
FOTH VENTURES LTD*	HAVERLAND DAIRY LTD.*	HUTTERIAN BRETHERN CHURCH OF STAR CITY INC.*	PLUM BLOSSOM FARM LTD. (SASK)*	
KENBERT ACRES*	CARMICHAEL HUTTERIAN COLONY*	BALGONIE HOLSTEINS LTD.*	TOM & WENDY MUFFORD*	
BERKHOUT, SIMON & ARJA*	NIENHUIS FAMILY FARM INC.*	DALVOORDE DAIRIES LTD.*	JBK FARMS LTD.*	

Classified Ad Service

SaskMilk offers a free classifieds service as part of its newsletter. Anyone wishing to place an ad is welcome to contact the SaskMilk office at (306) 949-6999 or info@saskmilk.ca. All negotiations will be independent of SaskMilk. Please note that ads will be posted in two issues and will then be removed unless SaskMilk is notified otherwise.

20 bred holstein heifers asking \$16,000 obo. Would consider farm or recreational equipment in trade. Located in the Saskatoon area. Call or text (306) 945-7490.

Reminder!

The deadline date for Quota Transfer, Quota Exchange, and 10% Transfer Limit Exemptions is the 6th of each month

Your Quota Transfer, and 10% Exemption Applications must be received on or before the 6th of the month in order to be effective the 1st of the following month

Quota Exchange forms must be received in the SaskMilk office on or before the 6th of the month for that month's Exchange.

SaskMilk Board of Directors

Matthew Flaman

Chair

(306) 537-9634

flamanmj@gmail.com

Albert Leyenhorst

Vice-Chair

(306) 230-0154

albertleyenhorst@gmail.com

Gordon Ell

Second Vice-Chair

(306) 535-1922

gt.ell@sasktel.net

Jessica Lovich

(306) 201-7362

j_simanton@hotmail.com

Tom MacKenzie

(306) 352-2292

tommymilk@icloud.com

Blaine McLeod

(306) 631-8053

rb.mcleod@sasktel.net

Jake Mitchell

(306) 860-8328

jmitsask@outlook.com

Anthony Nienhuis

(306) 221-1598

nienhuis@sasktel.net

Leonard Wipf

(306) 491-0432

leonard.countryclover@gmail.com

Saskmilk

[U SaskMilk](#) | [G SaskMilk](#)