



Saskmilk

IN THIS ISSUE:

Census of Agriculture	3
Quota Exchange	6
Production	10
SCC/BCC	13
Outdoor Access Study	14
Code of Practice	15
DFC Update	16
Classifieds	18
Directors	18

The Canadian dairy industry is committed to supporting dairy research projects across the country. These research efforts, whether provincially- or nationally-supported, work to improve the dairy industry by enhancing farm programs, driving dairy sector innovation, supporting improvement in sustainable dairy production, and increasing understanding of dairy products in human health.

This year, Dairy Farmers of Canada (DFC) is inviting Canadian

Research Update & Survey

dairy farmers and industry stakeholders to complete an [online survey](#) to update DFC's National Dairy Research Strategy to guide investments in science over the next five years. DFC's first [National Dairy Research Strategy](#) was published in 2016.

The survey takes about 15 minutes to complete and all answers are kept confidential. Survey participants can choose to enter their name into a draw for Lactanet and DFC Blue Cow Shop gift certificates after completing the questionnaire.

The survey is available from April 1 to 23, 2021 and your input is vital to the long-term growth and innovation in the Canadian dairy industry.

SaskMilk also supports Canadian dairy research independently. Current provincially-supported research includes:

Natural Sciences and Engineering Research Council of Canada (NSERC) Industrial Research Chair research (in partnership with other western milk boards and/or DFC):

Dr. Michael Steele, U of Guelph
- Dairy Nutrition (nutrition, gut

physiology, cell biology, microbiology, molecular biology, developmental biology, weaning, metabolism, ruminant management)

Dr. Dan Weary and Dr. Nina Von Keyserlingk, UBC - Animal Welfare (Calf and Heifer Rearing, Cow health and lameness, Housing facilities and management)

Dr. Herman Barkema, U of C - Infectious Diseases in Dairy Cattle

Dr. Jeroen De Buck, U of C - Investigating Solutions for Three Major Production Limiting Infectious Diseases of Dairy Cattle: Mastitis, Digital Dermatitis and Johne's disease

Dr. Anne Laarman, U of Alberta - Dairy Nutrition (Nutrition, Molecular biology, gut physiology, Developmental biology, Ruminant management, Cell biology, Weaning, Metabolism)

Other research, in partnership with ADF, other provincial commodity boards, and external partners:

Dr. Meena Sarkahar, U of S
- Treatment of Mastitis In-

fectious in Dairy Cattle-investigation developing novel phytochemical based hybrid antimicrobial agents that can be safely administered to dairy cattle for treating mastitis

- 🐄 Dr. Bill Billitegu, U of S – Feed Processing to Reduce Ergot Toxicity
- 🐄 Dr. Ahmad Al-Dissi, U of S – Should Livestock Diet be Tested for the Levels of the Epimers of Ergot Alkaloids?
- 🐄 Dr. Peiqiang Yu, U of S – Alternative feedstuffs for dairy cat-

tle; whole crop faba bean silage

- 🐄 Dr. Greg Penner, U of S – Feeding strategies for transition cows in VMS
- 🐄 Rayner Facility, U of S – Cow comfort assessment: deep bedding vs mattresses in VMS freestall facility
- 🐄 Rayner Facility, U of S – Cow comfort- not just for farmers; qualitative assessment of school groups visiting the Rayner Centre
- 🐄 Dr. Wendy Wilkins, Ministry of Agriculture – Salmonella Dublin

Surveillance program in Saskatchewan

- 🐄 Dr. Henry Soita, U of S – Comprehensive evaluation of the effect of extended-term delivery of local anesthetic on mitigating the pain caused by castration
- 🐄 Dr. Henry Soita, U of S – Nutritional evaluation of new forage barley and oat varieties as silage sources for high-producing dairy cows



Have your say
in Canadian
Dairy Research
dairyresearch.ca



SAVE THE DATE!

Spring Producer Meetings

Due to COVID-19, Spring Producer Meetings will also be held online. Registration closes **April 21st at noon**. Please register online [here](#) or phone the office at 306-949-6999. Please note, these meeting are **PRODUCER** only.

22 04 21

1:00 p.m.

23 04 21

9:00 a.m.

2021 Census of Agriculture



In May 2021, farm operators will be asked to complete the 2021 Census of Agriculture questionnaire to help update Canada's agricultural profile.

In early May, farm operators will receive a letter with easy-to-follow instructions on how to complete the Census of Agriculture questionnaire online. This user-friendly option will save time by automatically adding totals and limiting the questions to those that apply to the operation. All agricultural operations in Canada are legally required to complete the census questionnaire, according to the Statistics Act. The questionnaire can be completed by anyone who is responsible for, or knowl-

edgeable about, the day-to-day management decisions of the farming operation. The information provided will be kept strictly confidential and will be used only for statistical purposes as mandated by the same act.

Quick Dairy Facts from the 2016 Census of Agriculture:

- 🐄 There were 1.4 million dairy cows and heifers on Canadian farms
- 🐄 There were 10,525 farms specializing in dairy cattle and milk production
- 🐄 The majority of operators (85.0%) did not work anywhere other than on the farm, while 4.0% worked more than 40 hours per week at another job in addi-

tion to their farming duties.

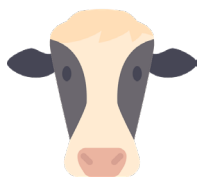
This May, complete the Census of Agriculture questionnaire and be heard amongst Canada's dairy producers!

For more information, please visit [Statistics Canada—Census of Agriculture](https://www150.statcan.gc.ca/n1/pub/26-669-x/2021001/article/00001-eng.htm).

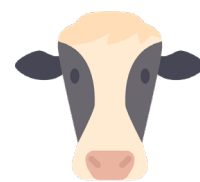
AGRICULTURE
www.census.gc.ca www.recensement.gc.ca

Statistics Canada Statistique Canada











Canada



Who Should I Call?



Who at the SaskMilk office should producers call?
Here's a handy guide!

FOR	CALL	AT
<ul style="list-style-type: none">  Sponsorship Requests <ul style="list-style-type: none"> • donation Requests • Dairyanna's Costume and Events • School Milk Program • Nutrition Resource Ordering 	Anita Medl	306-721-9483
<ul style="list-style-type: none">  Quota Exchange and Private Quota Transfers <ul style="list-style-type: none"> • Leases • Transfer Credits • Security Applications • Projections for production • Name Changes • Designation of Signing Authority • Monthly production numbers for producers 	Bev Solie	306-721-9488
<ul style="list-style-type: none">  School Milk Program <ul style="list-style-type: none"> • Marketing Activities 	Chelsea Wilcoxon	306-527-0753
<ul style="list-style-type: none">  Producer statements <ul style="list-style-type: none"> • Banking info for direct deposit of milk pay • Milk pick-up issues -variances in volumes, planning to quit shipping, etc. 	Darlene Weighill	306-721-9491
<ul style="list-style-type: none">  On Farm- licensing, facilities, equipment, driveways, yards, animal care <ul style="list-style-type: none"> • Lab testing results • Bulk truck drivers- licensing, complaints/issues • Bulk tank calibrations • Pro Action- Food Safety (CQM), Animal Care, Traceability, Biosecurity, Environment 	Deb Haupstein	306-721-9486
<ul style="list-style-type: none">  Monthly milk prices paid to producers <ul style="list-style-type: none"> • Provincial & National production updates 	Doug Miller	306-721-9485
<ul style="list-style-type: none">  Rayner Dairy Centre & Research <ul style="list-style-type: none"> • Extension services 	Emily Morabito	306-966-6015
<ul style="list-style-type: none">  SaskMilk Portal Assistance 	Jenn Buehler	306-721-9492
<ul style="list-style-type: none">  Media or news stories or if you have been contacted by any media agency or reporter <ul style="list-style-type: none"> • Trade agreements, international trade updates • DEAP policy/program enquiries • Research enquiries or proposals 	Joy Smith	306-721-9482
<ul style="list-style-type: none">  Social media enquiries (Twitter, Instagram, Facebook) <ul style="list-style-type: none"> • Website enquiries • Newsletter advertising • Dairy Conference 	Rigel Smith	306-721-9493



Next-Gen Oxidation Technology

Our products offer a unique mixture of minerals and oxygen in liquid form offering you control over viruses, bacteria, microbes, molds, pathogens, and organics in drinking water.



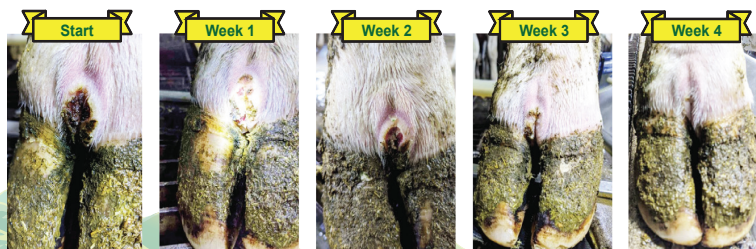
Phone: 1-866-358-4324
Email: sales@agfluid.com

+ Comparison of Oxidants					
	AFP Chemicals	Ozone Injection	Chlorine Compounds	Hydrogen Peroxide	Potassium Permang
Hydrogen Sulphide	✓	✓	✓	✓	✓
Ferrous Ions	✓	✓	✓	✓	✓
Manganous Ions	✓	✗	✗	✗	✓
Colour	✓	✓	✓	✓	✓
Reduce Precursors to Cl Organics	✓	!	!	!	!
Common Odors	✓	✓	✓	✓	✓
Earthy Musty Odors	✓	✓	!	!	✗
Enhance Coagulation	✓	✓	✓	✗	✗
Residual Maintenance	✓	!	✓	!	!
Overall Rating	✓	✓	✗	✓	✗

Residuals non-toxic / By-products non-toxic - Products are available in 20, 60, 210, and 1250L quantities

CASE STUDY

Digital dermatitis case study at a central Alberta 120 milking dairy farm from Oct 1 - 31, 2020



FOOT BATH CONCENTRATE



High Quality Disinfection Concentrate

Improved foot bath concentrate designed specifically for dairy farms. Low mixing ratio required 0.5% - 0.75%



Quota Exchange

The market-clearing price established for the April 2021 Quota Exchange was \$41,300.

The next Quota Exchange will be held on May 15, 2021. All offers to sell and bids to purchase quota through the Quota Exchange must be submitted by midnight, May 6, 2021. SaskMilk recommends that offers and bids be submitted well in advance of the deadline date to ensure adequate time for corrections, if necessary.

When making bids on the Quota Exchange, the price on offers to sell quota is the minimum price that the producer is prepared to accept for that quota. Only if the market-clearing price is equal to or greater than the producer's minimum price will that producer qualify for participation in the Exchange. Conversely, the price on offers to purchase quota is the maximum price that the producer is prepared to pay for that quota. Only if the market-clearing price is equal to or less than the producer's maximum price will that producer qualify for participation in the Exchange. The clearing price is set at the price where the smallest difference exists between the accumulated volume offered for sale and the accumulated volume bid to purchase. The results of the Quota Exchange are outlined in the following table.

APRIL 2021 QUOTA EXCHANGE RESULTS	
Market Clearing Price per kilogram of butterfat	\$41,300
Daily Kilograms offered to Purchase	128.00
Kilograms offered to Sell	71.60
Kilograms sold	23.00
Number of Producers	
- offered to purchase	16
- purchased quota	3
- offered to sell	10
- sold quota	6

APRIL 2021 QUOTA EXCHANGE CLEARING PRICE RESULTS									
Price (\$/ daily kg b.f.)	No. of Sellers	Cumulative Sellers	Daily Kgs b.f. offered for sale	Cumulative sales	Cumulative Sales less Cumulative purchases	Cumulative purchases	Daily Kgs b.f. offered to purchase	Cumulative bidders	No. of buyers
\$36,000.00	0	0	0.00	0.00	-128.00	128.00	4.00	16	1
\$36,500.00	0	0	0.00	0.00	-124.00	124.00	10.00	15	1
\$37,000.00	0	0	0.00	0.00	-114.00	114.00	4.00	14	1
\$38,000.00	1	1	0.90	0.90	-109.10	110.00	4.00	13	1
\$38,500.00	0	1	0.00	0.90	-105.10	106.00	25.00	12	2
\$39,000.00	1	2	9.10	10.00	-71.00	81.00	3.00	10	1
\$40,000.00	1	3	0.60	10.60	-67.40	78.00	15.00	9	2
\$40,500.00	1	4	3.00	13.60	-49.40	63.00	10.00	7	1
\$41,000.00	1	5	8.00	21.60	-31.40	53.00	18.00	6	2
\$41,050.00	0	5	0.00	21.60	-13.40	35.00	12.00	4	1
\$41,300.00	1	6	10.00	31.60	8.60	23.00	0.00	3	0
\$41,400.00	1	7	10.00	41.60	18.60	23.00	0.00	3	0
\$41,500.00	1	8	10.00	51.60	28.60	23.00	13.00	3	2
\$41,600.00	1	9	10.00	61.60	51.60	10.00	0.00	1	0
\$41,700.00	1	10	10.00	71.60	61.60	10.00	0.00	1	0
\$42,000.00	0	10	0.00	71.60	61.60	10.00	10.00	1	1

Please contact Bev Solie at 306-949-6999 for inquiries dealing with quota management sheets, the Quota Exchange, for transfer credits, or with any other quota transactions.

TRANSFER CREDIT SUMMARY REPORT			
MONTH	# OF PRODUCERS TRANSFER IN	# OF PRODUCERS TRANSFER OUT	TOTAL KGS OF BUTTERFAT
March, 2020	17	17	7,531
April	10	10	6,670
May	6	6	3,000
June	8	8	8,328
July	11	11	13,384
August	11	11	6,964
September	30	30	22,918
October	19	19	13,812
November	15	15	8,120
December	20	20	10,452
January	14	14	7,350
February	13	13	8,529
March, 2021	9	9	10,120

PRIVATE TRANSFERS PROCESSED	
MONTH	DAILY KILOGRAMS
March, 2020	0.00
April	232.64
May	49.00
June	164.00
July	410.00
August	199.00
September	1,146.31
October	10.00
November	96.88
December	0.00
January	25.00
February	0.00
March, 2021	578.58

OVER QUOTA (OVER 5 DAYS) REPORT BY MONTH		
MONTH	# OF PRODUCERS	KGS BUTTERFAT
March, 2020	11	1,008
April	7	1,286
May	4	764
June	3	190
July	5	216
August	3	34
September	2	202
October	2	174
November	2	142
December	4	341
January	5	1,437
February	9	1,496
March, 2021	25	1,690

SUMMARY REPORT OF CREDITS MARCH 2021 - 156 PRODUCERS

DAYS	# OF PRODUCERS	POSITIVE CREDITS ACCUMULATED (KGS OF BUTTERFAT)
+ 5	11	7,954
0 to + 5	39	19,504
TOTAL	50	27,458
DAYS	# OF PRODUCERS	NEGATIVE CREDITS ACCUMULATED (KGS OF BUTTERFAT)
-15	2	1,009
-10 to -15	20	47,412
-5 to -10	41	78,428
0 to -5	43	17,300
TOTAL	106	144,148

LOST OPPORTUNITY REPORT

MONTH	# OF PRODUCERS	LOST OPPORTUNITY (KGS OF BUTTERFAT)
March, 2020	1	648
April, 2020	4	1,416
May, 2020	9	2,479
June, 2020	8	3,531
July, 2020	10	3,572
August, 2020	8	2,022
September, 2020	6	617
October, 2020	3	491
November, 2020	3	255
December, 2020	4	844
January, 2021	5	1,006
February, 2021	2	365
March, 2021	2	522

WEIGHTED AVERAGE COMPONENT TESTS & PRICES MARCH 2021

COMPONENTS	AVERAGE TEST	PRICE PER KILOGRAM CLASS 1 TO 5
Butterfat	4.2257	16.830239
Protein	3.2586	2.567631
Other Solids	5.9055	0.708405

The average butterfat price received per kilogram was \$19.80.

SASKATCHEWAN MILK POOL RESULTS MARCH 2021	
Milk Sale Revenue	\$22,018,968.51
WMP Revenue/<Expense>	<\$981,990.20>
Total Revenue	\$21,036,978.31

Changes to the *Milk Producer* Magazine

Dairy Farmers of Ontario (DFO) is changing the way in which it sends *Milk Producer* magazine. In the past, it has been automatically mailed to producers across the country. DFO is now asking individual farms to sign up to continue receiving the monthly printed magazine. The subscription will continue to be FREE. All you need to do is sign up online at bit.ly/mp-mag or fill out the hard copy subscription form that will be coming in the mail with the April magazine.

Milk Producer magazine is proudly owned and published by Canadian dairy farmers, for Canadian dairy farmers. The news and industry perspective of the magazine are an essential resource for farming smarter and more productively.

Check out the magazine's new website at milkproducer.ca.



RENEW NOW

Renew your **FREE** subscription to *Milk Producer* magazine now!

Fill out the renewal form at:

bit.ly/mp-mag

For questions, email milkproducer@milk.org

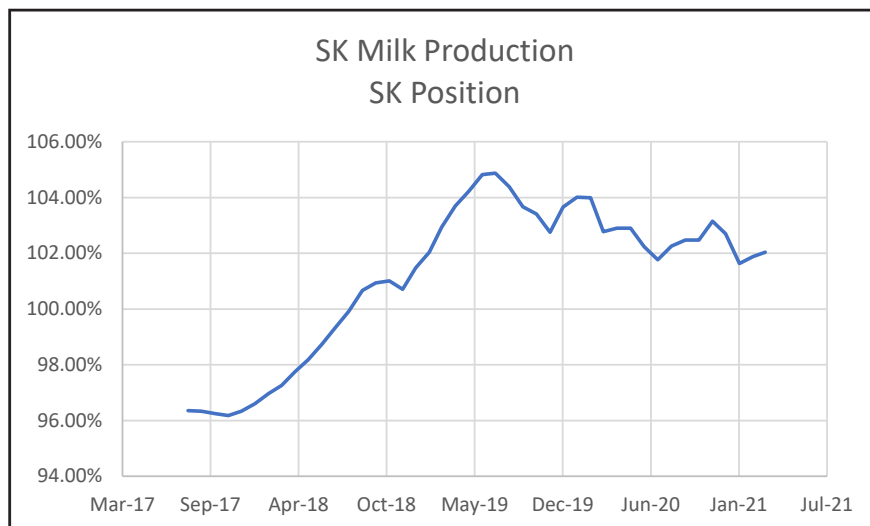
Check out our new website at www.milkproducer.ca

	(1) Monthly Total Production Kgs of bf	(2) Total Monthly CDC Quota Allocation Kgs bf	(3) Monthly Over or (Under) Production Kgs bf col. 1 - 2 = 3	(4) Lower Flexibility Limit -2.00% Kgs bf col. 8 * -1.5%
Mar-20	1,055,461	1,073,511	(18,050)	-245,108
Apr-20	970,693	865,580	105,113	-241,673
May-20	1,020,648	947,006	73,642	-241,096
Jun-20	990,904	989,664	1,240	-242,452
Jul-20	1,023,353	1,044,803	(21,450)	-243,564
Aug-20	1,023,170	1,005,440	17,730	-242,210
Sep-20	1,022,765	1,040,287	(17,522)	-241,699
Oct-20	1,089,543	1,149,939	(60,396)	-241,828
Nov-20	1,048,426	1,077,998	(29,572)	-241,673
Dec-20	1,110,597	1,138,227	(27,630)	-243,172
Jan-21	1,106,333	1,059,133	47,200	-245,941
Feb-21	995,725	864,139	131,586	-245,225
Mar-21	1,065,238	1,064,716	522	-245,049

In March, Saskatchewan had a monthly CDC allocation of **1,064,716 kilograms** of butterfat. Saskatchewan production was **522 kgs** of butterfat over and cumulatively over by **781,441 kgs** of butterfat. On a percentage basis, Saskatchewan is **6.38%** above our CDC allocation flexibility limits based on the Continuous Quota model. The -2.00% lower flexibility limit is in effect.

(5) Upper Flexibility Limit 1.25%	(6) Cumulative Over or (Under) Production with limits	(7) Cumulative Over or (Under) Production with limits (%)	(8) Rolling 12 Month Total Quota
Kgs bf	Kgs bf		Kgs bf
col. 8 *1.0%		col. 6 / 8	
153,192	472,961	3.86%	12,255,382
151,046	578,074	4.78%	12,083,667
150,685	651,716	5.41%	12,054,823
151,533	652,956	5.39%	12,122,607
152,228	631,506	5.19%	12,178,203
151,382	643,715	5.28%	12,110,521
151,062	622,175	5.15%	12,084,970
151,143	561,779	4.94%	12,091,404
151,046	567,629	5.10%	12,083,648
151,983	588,785	4.84%	12,158,620
153,713	635,986	5.28%	12,297,055
153,266	780,919	6.37%	12,261,248
153,156	781,441	6.38%	12,252,453

- (1) Monthly Production in Saskatchewan
- (2) Total Monthly Quota = Class 1 sales + Monthly MSQ + Carry Forward
- (3) Difference between the monthly production (1) and the total monthly quota (2)
- (4) The Lower Flexibility Limit is -2.00% of Rolling 12 Month Total Quota (9)
- (5) The Upper Flexibility Limit is 1.25% of Rolling 12 Month Total Quota (9)
- (6) Previous Month Cumulative Over or (Under) Production + Current Monthly Over or (Under) Production (capped at lower or upper limit if applicable)
- (7) Equal to Column (6) expressed as a percentage basis within the flexibility limits
- (8) Total Monthly CDC Quota Allocation for the previous 12 months



Beta-lactam Drug	Detection Level† (ppb*)	US Safe Level or Tolerance / Canadian MRL (ppb*)	Sulfa Drug	Detection Level† (ppb*)	US Safe Level or Tolerance / Canadian MRL (ppb*)
Amoxicillin	3.1	10 / None	Sulfadimethoxine	4.7	10 / 10∞
Ampicillin	7.7	10 / 10	Sulfamethazine	7.7	10 / 10∞
Ceftiofur and Metabolites^	53	100 / 100	Tetracycline Drug	Detection Level† (ppb*)	US Safe Level/ Tolerance / Canadian MRL (ppb*)
Cephapirin	14	20 / 20	Chlortetracycline	54	300 / 100
Cloxacillin	7.4	10 / None	Oxytetracycline	66	300 / 100
Penicillin G	2.2	5 / 6&	Tetracycline	21	300 / 100

† Positive at least 90% of the time with 95% confidence.

* parts per billion or ng/mL

^ Ceftiofur parent drug sensitivity is approximately 1/2 that reported in the table.

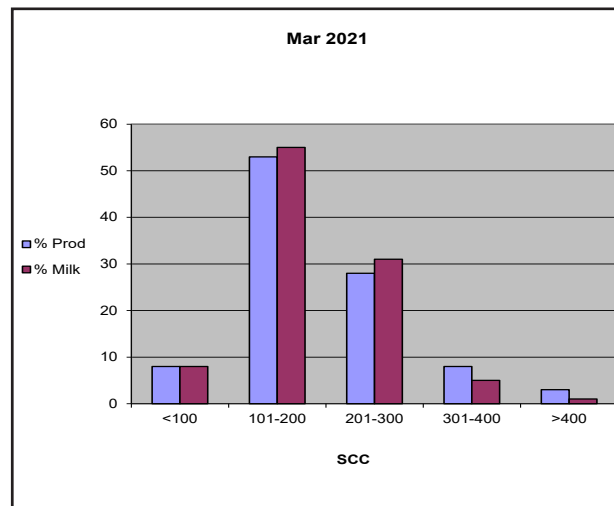
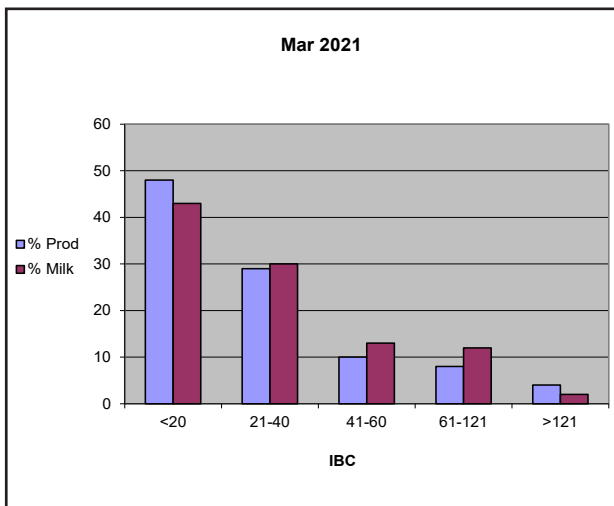
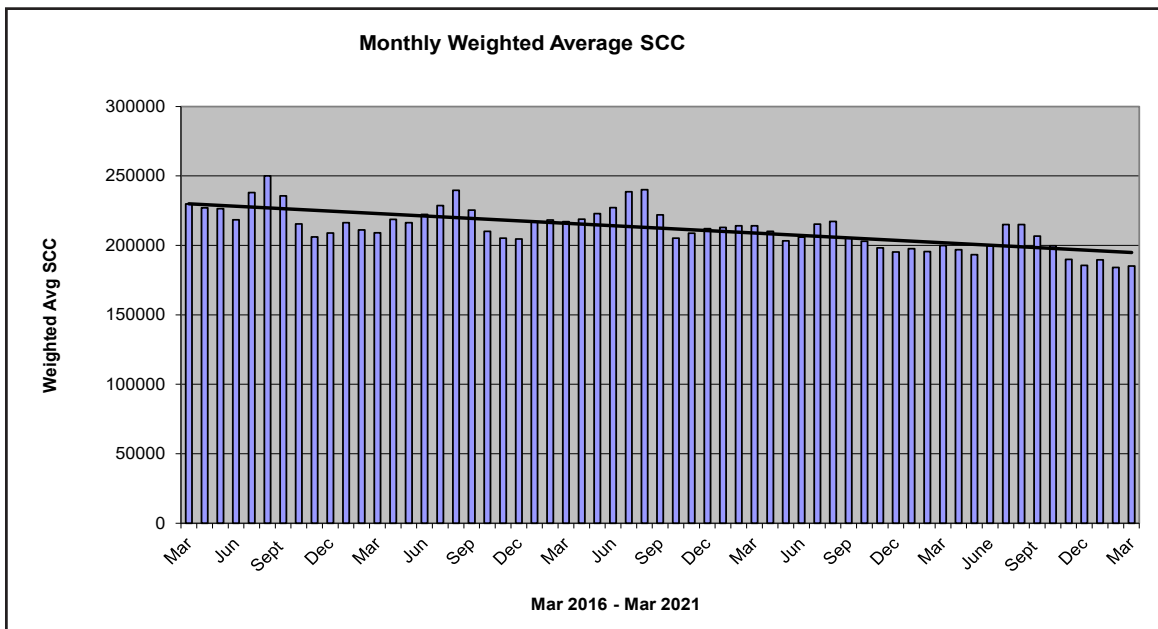
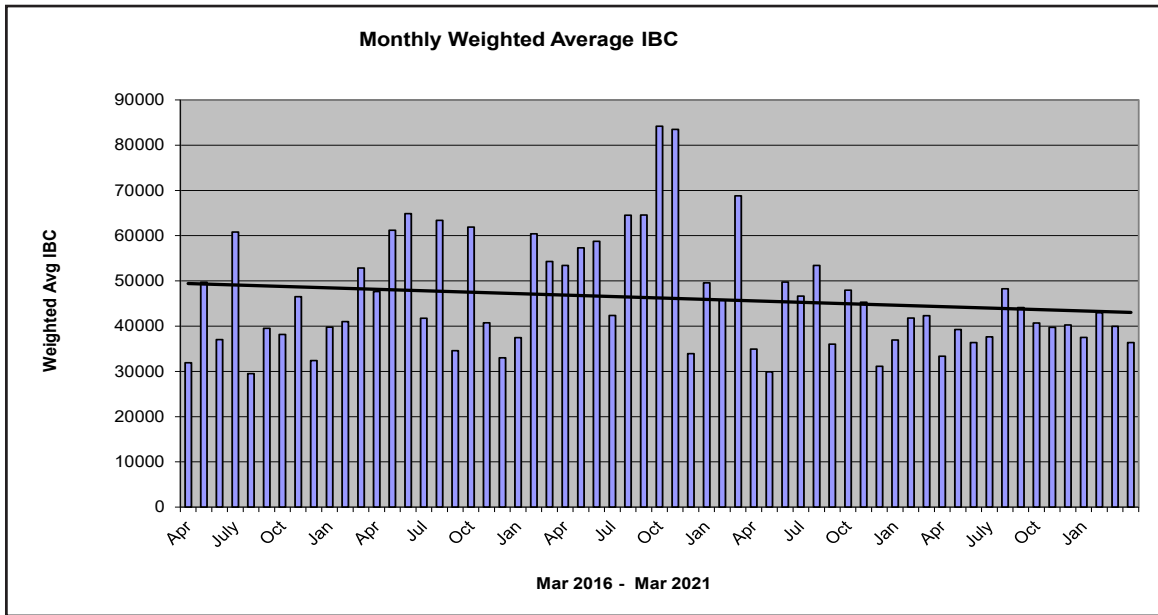
& Canadian MRL for penicillin G is 0.01 IU/ml, equivalent to 6 ppb.

∞ Canadian MRL for sulfa drugs are singly or in combination with other MRL listed sulfonamides.

Test stations are located at the following locations:

REGION	LOCATION	CONTACT
Swift Current, SK	Agifoods Truck Bay	675 Cheadle Street W., 306-773-1097 or Roger Ruf 306-741-3261
Star City, SK	Star City Colony	Reuben Tschetter, 306-921-9381
Grenfell, SK		Jim Ross, 306-697-2232
Yorkton, SK	Ford Dairy Farms Inc.	Bud & Margaret Ford, 306-782-7240
Saskatoon, SK	Agrifoods Truck Bay (east of Saputo receiving bay)	Mike V. or Mike K., 306-664-0202 After hours: 306-668-8135

Charm tests strips and Charm testers are now available for purchase through SaskMilk. Agrifoods is now carrying SNAP test kits for tetracyclines as well as beta lactams. For further information contact: Deb Hauptstein 306-721-9486



Outdoor Access for Dairy Cattle Study



SaskMilk and University of Calgary faculty Veterinary Medicine (Herman Barkema and Anne-Marieke Smid) are working together to help understand dairy producers' views on [outdoor access for dairy cattle](#). Recent research has indicated that some producers make use of outdoor access (i.e. pasture and other types of outdoor areas) but others report concerns and have questions regarding the feasibility of incorporating outdoor access into current dairy cattle management practices. The aims of this study are to explore:

- 🐄 Current use of outdoor access for dairy cattle on commercial dairy farms, and
- 🐄 Producer's perspective on the feasibility and future of outdoor access on dairy farms.

The questionnaire will take approximately 10 minutes to complete. Questions cover farm management with a focus on outdoor access for dairy cows, perceptions regarding certain barriers and motives for outdoor access, and how you envision outdoor access for dairy cows will look in the future.

For more information on the study please contact:

Anne-Marieke Smid, PhD
Production Animal Health
Faculty of Veterinary Medicine
University of Calgary
Phone: 1-778-791-9066
Email: annemarieke.smid@ucalgary.ca

Code of Practice

5.2 Loading and Receiving

When loading cattle, shippers should defer to the expertise of the driver who has a general understanding of allowable weight and loading density allowable on each part of the trailer. Drivers are also aware of variations between provincial/state requirements. Commercial vehicles must comply with provincial and state gross vehicle loading limits (e.g., the total weight of the tractor, trailer, and load).

Round crowd pens and curved single file chutes work better than straight ones. Curved cattle chutes are better for handling cattle because they take advantage of the natural tendency of cattle to go back to where they came from (79).

REQUIREMENTS

Electric cattle prods must only be used in extreme situations, such as when animal or human safety is at risk, and must never be used on the face, anus or reproductive organs of dairy cattle.

Electric prods must not be used on calves that can be moved manually.

The requirements for loading and unloading procedures and equipment as described in the Health of Animals Regulations must be complied with.²

Enure cattle that are incompatible are segregated.

RECOMMENDED BEST PRACTICES

- ensure animal handlers are trained in proper loading and unloading practices
- ensure roads and loading areas are accessible in all kinds of weather
- ensure loading facilities:
 - 🐄 have curved chutes with solid sides
 - 🐄 are uniform in color and texture
 - 🐄 are uniformly illuminated (avoid sharp contrasts and shadows)
- ensure ramps are designed to prevent slipping and falling and are free of protrusions or sharp objects
- move cattle in small groups
- load cattle calmly and quietly (do not yell or whistle)
- know how to determine proper loading densities in order to provide more accurate information to transporters when arranging for transport (refer to [Transportation Code of Practice](#)) (76).

2. The Health of Animals Regulations prohibit loading or unloading an animal in a way likely to cause injury or undue suffering. The Regulations also require that ramps, chutes and other equipment used for loading and unloading animals:

- be maintained and used so as not to cause injury or undue suffering to animals,
- have sides of sufficient strength and height to prevent animals from falling off the ramp or other equipment, and
- have no unprotected gap between the ramp and the vehicle

DFC Update

Dairy Farmers of Canada supports establishment of a 'Grocery Code of Conduct'



Dairy Farmers of Canada (DFC) welcomes with great interest the 'Grocery Supply Code of Practice for Canada' proposed by Food, Health & Consumer Products of Canada (FHCP) and Empire Company Limited. If adopted, a code of conduct of this nature would bring greater balance to supplier-retailer relationships, improve competition in the grocery retail environment, and foster greater collaboration throughout the food supply chain.

In recent years, some retailers have increased pressure on suppliers by imposing arbitrary and unreasonably harsh fees and penalties and making unilateral changes to supply agreements. If left unchecked, these practices could hamper product innovation, reduce product variety, and generate unnecessary costs, with a negative impact on dairy farmers, processors, independent grocers and consumers alike.

Countries such as Australia, Ireland and the United Kingdom have already recognized the benefits of adopting such codes of conduct, which promote transparency, predictability and openness in the food supply chain.

Dairy Farmers of Canada is supportive of this kind of proposal and expresses its desire to participate in any future consultations on this issue.

March Quality Bonus

To get the quality bonus producers must have:

Monthly Average:

IBC - $\leq 30,000$ / ml

SCC- $\leq 250,000$ /ml

FpT- lower than -0.525° Hortvet

No positive inhibitors

*represent # of months the quality bonus has been received

HUTT BRET CHURCH OF BEECHY***	HUTT BRET DINSMORE***	VANGUARD HUTT BRET***
BENCH COLONY**	ROSETOWN FARMING CO***	WHEATLAND HUTT BRET OF CABRI**
BEST-O-WEST-O DAIRY	HUTT BRET WEST BENCH***	DALKIM HOLSTEINS LTD**
NEUVIEW DAIRIES INC	J & J BOOT DAIRY LTD***	Q VALLEY FARM LTD***
HUTT BRET CHURCH OF TWIN CREEK	SEPT SUN ACRES LTD***	BLU J FARMS***
CARONCREST FARMS LTD***	KENSTAL FARMS INC	HIGHDALE FARMS LTD***
CLEAR SPRING COLONY**	KESSEL FAMILY FARM***	WILLOW PARK COLONY***
CRAILA DAIRY LTD***	ELKREST FARMS LTD***	EAGLEWOOD HOLDINGS LTD***
BENBIE HOLSTEINS LTD***	J-C LAND & LIVESTOCK LTD***	KIELSTRA HOLSTEINS INC***
LEGEND DAIRY**	DIAMOND HOLSTEINS LTD	SPRING LAKE COLONY***
LOVHOLM HOLSTEINS***	KNITTIG FARMS LTD***	BUTTE COLONY***
DOWNIE LAKE COLONY***	ARTLAND DAIRIES INC***	HIDDEN VALLEY DAIRIES LTD
EATONIA HUTT BRETH	HAVERLAND DAIRY LTD***	HUTT BRETH SOVEREIGN INC
EL-NELL FARMS LTD	NIENHUIS FAMILY FARM INC**	EARVIEW COLONY***
ELL'S DAIRY FARM	MAIN CENTRE DAIRY FARM***	BARMOOR FARMS LTD**
BRUINSDALE FARMS LTD***	DAUM DAIRIES***	SUNNYSIDE DAIRY***
ENNS FARMS LTD***	MIL-EN-ROY FARMS (1981) LTD***	PLUM BLOSSOM FARM LTD.(SASK)***
W.C.C. DAIRIES CORP***	LAZY DAY FARMS***	JBK FARMS LTD**
FEHR'S RIVERFRONT FARM***	STAR VALLEY FARM PART***	HYLJON HOLSTEINS LTD***
FOTH VENTURES LTD***	HUTT BRET QUILL LAKE***	HUTT BRETH PENNANT INC
KENBERT ACRES**	LEYENHORST, A & H***	WESTWIKK FARMS***
BERKHOUT, SIMON & ARJA***	VANZESSEN DAIRY INC***	GRASSY HILL COLONY*
GLIDDEN HUTTERIAN BRETHREN***	RIBSTONE HUTT COLONY**	MCGEE COLONY
RIVER VALLEY HOLSTEINS LTD	ROBELLA HOLSTEINS	HUTT BRET SOUTHLAND***
FOX VALLEY FARMING CO***	E.S.B. HOLDINGS LTD***	WIEBE, CORNY & TRACY**
HODGEVILLE COLONY***	SAND LAKE HUTT BRET***	ADIT FARMS INC**
PONTEIX COLONY**	PRAIRIE WEST DAIRIES INC	GIESBRECHT, KEN & KAREN**
HUTT BRETH SPRING CREEK***	101115806 SASK LTD***	BERG DAIRIES**
HUTT BRET SWIFT CURRENT***	SIMMIE HUTT BRET***	RICHARD VAN DONGEN***
HUTT BRETH GOLDEN VIEW INC	SMILEY HUTT BRET***	LAKEVIEW HOLSTEINS LTD***
HUTT BRETH KYLE**	BALGONIE HOLSTEINS LTD***	BOESE, AREDEL & LENORA***
HUTT BRET LAJORD***	DALVOORDE DAIRIES LTD***	

Classified Ad Service

SaskMilk offers a free classifieds service as part of its newsletter. Anyone wishing to place an ad is welcome to contact the SaskMilk office at (306) 949-6999 or info@saskmilk.ca. All negotiations will be independent of SaskMilk. Please note that ads will be posted in two issues and will then be removed unless SaskMilk is notified otherwise.

Downsizing Herd of Registered Holsteins

For Sale:

1. Calves 1-6 months
2. Calves 6-12 months
3. Breeding Heifers
4. Bred & Spring Heifers
5. 1st, 2nd, & 3rd Calvers

LOTS OF DEEP PEDRIGREES AS MAJORITY WILL HAVE VG OR EX DAMS FROM TODAY'S TOP LEADING SIREs

Please contact: **Lyle Pretty (306) 535-3889** at MILEN-ROY Farms 1981 Ltd., White City, SK

Looking for a hoof trim chute.

New or used.

Call or text Kevin as 780-806-6278

Reminder!

The deadline date for Quota Transfer, Quota Exchange, and 10% Transfer Limit Exemptions is the 6th of each month

Your Quota Transfer, and 10% Exemption Applications must be received on or before the 6th of the month in order to be effective the 1st of the following month. Quota Exchange forms must be received in the SaskMilk office on or before the 6th of the month for that month's Exchange.

SaskMilk Board of Directors

Matthew Flaman

Chair

(306) 537-9634

flamanmj@gmail.com

Albert Leyenhorst

Vice-Chair

(306) 230-0154

albertleyenhorst@gmail.com

Gorden Ell

Second Vice-Chair

(306) 535-1922

gt.ell@sasktel.net

Brian Lindenbach

(306) 591-0315

broyhill192@gmail.com

Jessica Lovich

(306) 201-7362

j_simanton@hotmail.com

Tom MacKenzie

(306) 352-2292

tommymilk@icloud.com

Blaine McLeod

(306) 631-8053

rb.mcleod@sasktel.net

Anthony Nienhuis

(306) 221-1598

nienhuis@sasktel.net

Leonard Wipf

(306) 491-0432

leonard.countryclover@gmail.com

Saskmilk