

### In this Issue:

Did You Know?.....	2
Census of Agriculture....	4
Quota Exchange .....	5
Production .....	8
Code of Practice.....	10
SCC/IBC.....	12
Silage Study.....	14
Classifieds .....	16
Directors.....	16

### *Palm Fat in Dairy Update*

As you were previously made aware, consumer concerns were raised last month regarding the use of palm by-product feed supplements and their potential relation to consistency changes in Canadian butter. The discussions expanded to broader discourse about the use of palm products in general.

Since the onset of this issue, Dairy Farmers of Canada and SaskMilk have upheld the importance of answering these consumer questions and concerns from a factual, scientific basis. As there is currently little research available on the subject, an independent, expert national Working Group has been formed to investigate the situation further.

The national Working Group consists of producer, processor, and consumer representatives, and experts on animal science, dairy cow nutrition, human nutritional science, milk composition, and food science. Group members are accomplished and respected in their fields. The names and bios of the Working Group members can be found on the dedicated webpage on the [Dairy Farmers of Canada website](#).

The Working Group objectives are to:

- confirm whether or not there have been consistency changes in butter;
- review current literature to assess the science on
  - feeding palm fat supplements to cows
  - milk composition
  - milk handling and processing techniques
  - health and safety of the supplements (palm)
- identify gaps in data and research;
- review sustainability of palm fat supplements, including by-products; and
- assess the role and nutritional value of palm fat supplements for dairy cows.



The Working Group held an introductory meeting in early March and are already in the process of their research. They will continue to meet to discuss their findings and move forward to wherever the science takes them.

Overall, the media and social media interest and upset surrounding this issue has continued to decline, both in Saskatchewan and nationally. SaskMilk has not received any further media inquiries related to this issue.

SaskMilk understands that animal nutrition is a significant component to each farm, and that our producers work with nutritionists and veterinarians to develop excellent animal nutrition plans.

SaskMilk will continue to update our producers with new information as it develops. Please feel free to reach out to your Communications staff at the office if you have questions or would like any other information – also, if you get questions from anyone else and would like help responding, we are here to help you with that as well.

Joy Smith [joy.smith@saskmilk.ca](mailto:joy.smith@saskmilk.ca) or #306-721-9482  
Rigel Smith [rigel.smith@saskmilk.ca](mailto:rigel.smith@saskmilk.ca) or #306-721-9493

## *Save the Date!*

### **SPRING PRODUCER MEETINGS**

Due to COVID-19, Spring Producer Meetings will be held online. There will be two sessions available: April 22<sup>nd</sup> at 1:00 p.m. and April 23<sup>rd</sup> at 9:00 a.m. Please stay tuned for more information and how to register.



## *Did You Know?*

### **TRANSFER CREDIT BULLETIN ADDITIONS**

Anyone interested in adding a posting to the transfer credit bulletin **must have** the “*Transfer Credit Designation*”.

To set this permission, users with **full site permissions** can complete the following steps:

1. Go to “Contacts” and click the pencil beside “**Transfer Credit Designation**”
2. Select the appropriate contact(s) and click save

## *Who Should I Call?*

*Who at the SaskMilk office should producers call? Here's a handy guide!*

<b><i>For...</i></b>	<b><i>Call...</i></b>	<b><i>At...</i></b>
<ul style="list-style-type: none"> <li>➤ Sponsorship Requests</li> <li>➤ Donation Requests</li> <li>➤ Dairyanna's Costume and Events</li> <li>➤ School Milk Program</li> <li>➤ Nutrition Resource Ordering</li> </ul>	Anita Medl	306-721-9483
<ul style="list-style-type: none"> <li>➤ Quota Exchange and Private Quota Transfers</li> <li>➤ Leases</li> <li>➤ Transfer Credits</li> <li>➤ Security Applications</li> <li>➤ Projections for production</li> <li>➤ Name Changes</li> <li>➤ Designation of Signing Authority</li> <li>➤ Monthly production numbers for producers</li> </ul>	Bev Solie	306-721-9488
<ul style="list-style-type: none"> <li>➤ School Milk Program</li> <li>➤ Marketing Activities</li> </ul>	Chelsea Wilcoxon	306-527-0753
<ul style="list-style-type: none"> <li>➤ Producer statements</li> <li>➤ Banking info for direct deposit of milk pay</li> <li>➤ Milk pick-up issues –variances in volumes, planning to quit shipping, etc.</li> </ul>	Darlene Weighill	306-721-9491
<ul style="list-style-type: none"> <li>➤ On Farm- licensing, facilities, equipment, driveways, yards, animal care</li> <li>➤ Lab testing results</li> <li>➤ Bulk truck drivers- licensing, complaints/issues</li> <li>➤ Bulk tank calibrations</li> <li>➤ Pro Action- Food Safety (CQM), Animal Care, Traceability, Biosecurity, Environment</li> </ul>	Deb Haupstein	306-721-9486
<ul style="list-style-type: none"> <li>➤ Monthly milk prices paid to producers</li> <li>➤ Provincial &amp; National production updates</li> </ul>	Doug Miller	306-721-9485
<ul style="list-style-type: none"> <li>➤ Rayner Dairy Centre &amp; Research</li> <li>➤ Extension services</li> </ul>	Emily Morabito	306-966-6015
<ul style="list-style-type: none"> <li>➤ SaskMilk Portal Assistance</li> </ul>	Jenn Buehler	306-721-9492
<ul style="list-style-type: none"> <li>➤ Media or news stories <i>or</i> if you have been contacted by any media agency or reporter</li> <li>➤ Trade agreements, international trade updates</li> <li>➤ DEAP policy/program enquiries</li> <li>➤ Research enquiries or proposals</li> </ul>	Joy Smith	306-721-9482
<ul style="list-style-type: none"> <li>➤ Social media enquiries (Twitter, Instagram, Facebook)</li> <li>➤ Website enquiries</li> <li>➤ Newsletter advertising</li> <li>➤ Dairy Conference</li> </ul>	Rigel Smith	306-721-9493

## 2021 Census of Agriculture Producer Action Needed

In May 2021, farm operators will be asked to complete the 2021 Census of Agriculture questionnaire to help update Canada's agricultural profile.



In early May, farm operators will receive a letter with easy-to-follow instructions on how to complete the Census of Agriculture questionnaire online. This user-friendly option will save time by automatically adding totals and limiting the questions to those that apply to the operation. All agricultural operations in Canada are legally required to complete the census questionnaire, according to the Statistics Act. The questionnaire can be completed by anyone who is responsible for, or knowledgeable about, the day-to-day management decisions of the farming operation. The information provided will be kept strictly confidential and will be used only for statistical purposes as mandated by the same act.

### Quick Dairy Facts from the 2016 Census of Agriculture

- There were 1.4 million dairy cows and heifers on Canadian farms
- There were 10,525 farms specializing in dairy cattle and milk production
- The majority of operators (85.0%) did not work anywhere other than on the farm, while 4.0% worked more than 40 hours per week at another job in addition to their farming duties.

This May, complete the Census of Agriculture questionnaire and be heard amongst Canada's dairy producers!

For more information, please visit [Statistics Canada—Census of Agriculture](https://www150.statcan.gc.ca/n1/pub/25-614-x/2021001/article/00001-eng.htm).



## *QUOTA EXCHANGE*

The market-clearing price established for the March 2021 Quota Exchange was **\$41,000**.

The next Quota Exchange will be held on **April 15, 2021**. All offers to sell and bids to purchase quota through the Quota Exchange must be submitted by midnight, **April 6, 2021**. SaskMilk recommends that offers and bids be submitted well in advance of the deadline date to ensure adequate time for corrections, if necessary.

When making bids on the Quota Exchange, the price on offers to sell quota is the minimum price that the producer is prepared to accept for that quota. Only if the market-clearing price is equal to or greater than the producer's minimum price will that producer qualify for participation in the Exchange. Conversely, the price on offers to purchase quota is the maximum price that the producer is prepared to pay for that quota. Only if the market-clearing price is equal to or less than the producer's maximum price will that producer qualify for participation in the Exchange. The clearing price is set at the price where the smallest difference exists between the accumulated volume offered for sale and the accumulated volume bid to purchase. The results of the Quota Exchange are outlined in the following Table.

### MARCH 2021 QUOTA EXCHANGE RESULTS

<b>Market Clearing Price per kilogram of butterfat</b>	<b>\$41,000</b>
<b>Daily Kilograms offered to Purchase</b>	<b>161.00</b>
<b>Kilograms offered to Sell</b>	<b>13.00</b>
<b>Kilograms sold</b>	<b>13.00</b>
<b>Number of Producers</b>	
- offered to purchase	14
- purchased quota	2
- offered to sell	3
- sold quota	3

### MARCH 2021 QUOTA EXCHANGE CLEARING PRICE RESULTS

Price (\$/daily kg b.f.)	No. of Sellers	Cumulative Sellers	Daily Kgs b.f. offered for sale	Cumulative sales	Cumulative Sales less Cumulative purchases	Cumulative purchases	Daily Kgs b.f. offered to purchase	Cumulative bidders	No. of buyers
\$32,500.00	0	0	0.00	0.00	-161.00	161.00	20.00	14	1
\$35,000.00	0	0	0.00	0.00	-141.00	141.00	15.00	13	1
\$36,500.00	0	0	0.00	0.00	-126.00	126.00	23.00	12	2
\$38,500.00	1	1	3.00	3.00	-100.00	103.00	35.00	10	3
\$40,000.00	2	3	10.00	13.00	-55.00	68.00	55.00	7	5
\$41,000.00	0	3	0.00	13.00	0.00	13.00	9.00	2	1
\$42,500.00	0	3	0.00	13.00	9.00	4.00	4.00	1	1

\* Please contact Bev Solie at 306-949-6999 for inquiries dealing with quota management sheets, the Quota Exchange, for transfer credits, or with any other quota transactions.



## TRANSFER CREDIT SUMMARY REPORT

MONTH	# OF PRODUCERS TRANSFER IN	# OF PRODUCERS TRANSFER OUT	TOTAL KGS BUTTERFAT
February, 2020	26	26	14,525
March	17	17	7,531
April	10	10	6,670
May	6	6	3,000
June	8	8	8,328
July	11	11	13,384
August	11	11	6,964
September	30	30	22,918
October	19	19	13,812
November	15	15	8,120
December	20	20	10,452
January	14	14	7,350
<b>February, 2021</b>	<b>13</b>	<b>13</b>	<b>8,529</b>

## PRIVATE TRANSFERS PROCESSED

MONTH	DAILY KILOGRAMS
February, 2020	0.00
March	0.00
April	232.64
May	49.00
June	164.00
July	410.00
August	199.00
September	1,146.31
October	10.00
November	96.88
December	0.00
January	25.00
<b>February, 2021</b>	<b>0.00</b>

## OVER QUOTA (OVER 5 DAYS)

### REPORT BY MONTH

MONTH	# OF PRODUCERS	KGS BUTTERFAT
February, 2020	7	1,360
March	11	1,008
April	7	1,286
May	4	764
June	3	190
July	5	216
August	3	34
September	2	202
October	2	174
November	2	142
December	4	341
January, 2021	5	1,437
<b>February, 2021</b>	<b>9</b>	<b>1,496</b>

## SUMMARY REPORT OF CREDITS FEBRUARY 2021 – 156 PRODUCERS

DAYS	# OF PRODUCERS	POSITIVE CREDITS ACCUMULATED (KGS OF BUTTERFAT)
+ 5	9	5,177
0 to + 5	42	20,227
TOTAL	51	12,643
DAYS	# OF PRODUCERS	NEGATIVE CREDITS ACCUMULATED (KGS OF BUTTERFAT)
-15	2	934
-10 to -15	21	43,893
-5 to -10	41	89,512
0 to -5	41	18,338
TOTAL	105	152,676

## LOST OPPORTUNITY REPORT

MONTH	# OF PRODUCERS	LOST OPPORTUNITY (KGS OF BUTTERFAT)
February, 2020	3	1,183
March, 2020	1	648
April, 2020	4	1,416
May, 2020	9	2,479
June, 2020	8	3,531
July, 2020	10	3,572
August, 2020	8	2,022
September, 2020	6	617
October, 2020	3	491
November, 2020	3	255
December, 2020	4	844
January, 2021	5	1,006
<b>February, 2021</b>	<b>2</b>	<b>365</b>

## WEIGHTED AVERAGE COMPONENT TESTS & PRICES FEBRUARY 2021

Components	Average Test	Price per kilogram Class 1 to 5
Butterfat	4.2938	16.676235
Protein	3.2716	2.574849
Other Solids	5.8862	0.715575

**The average butterfat price received per kilogram was \$19.62.**

### SASKATCHEWAN MILK POOL RESULTS FEBRUARY 2021

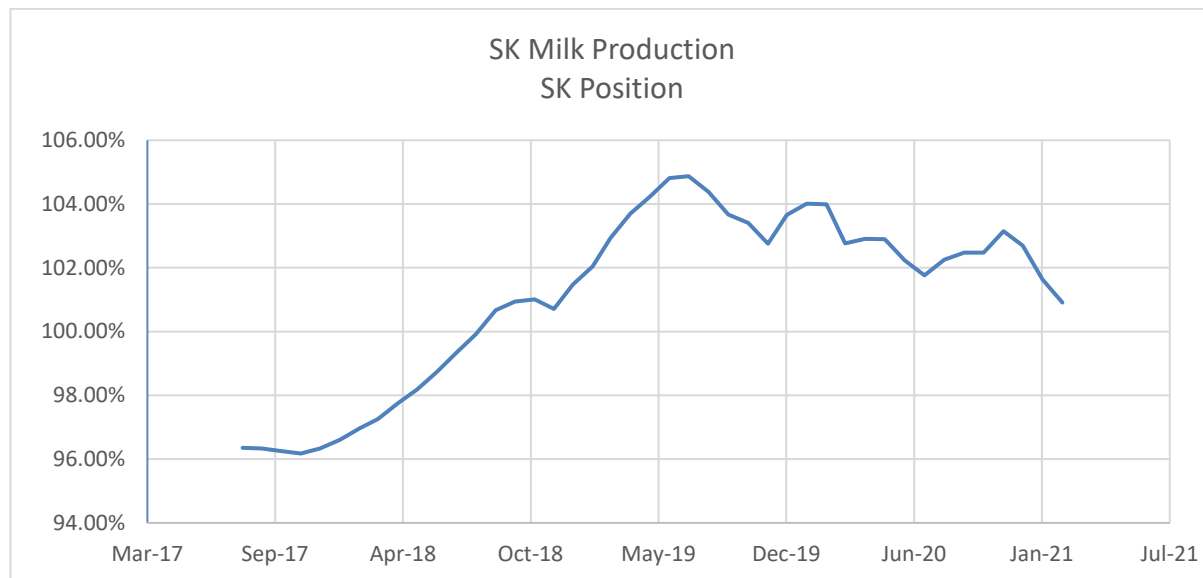
Milk Sale Revenue	\$20,385,041.54
WMP Revenue/<Expense>	<\$838,912.82>
<b>Total Revenue</b>	<b>\$19,546,128.72</b>

In February, Saskatchewan had a monthly CDC allocation of **981,147 kilograms** of butterfat. In the month of February, Saskatchewan production was **14,578 kgs** of butterfat **over** and cumulatively **over** by **663,911 kgs** of butterfat. On a percentage basis, Saskatchewan is **5.36% above** our CDC allocation flexibility limits based on the Continuous Quota model. The -2.00% lower flexibility limit is in effect.

	(1) Monthly Total Production  Kgs bf	(2) Total Monthly CDC Quota Allocation  Kgs bf	(3) Monthly Over or (Under) Production  Kgs bf  col. 1 – 2 = 3	(4) Lower Flexibility Limit <b>-2.00%</b>  Kgs bf  col. 8 * -1.5%	(5) Upper Flexibility Limit <b>1.25%</b>  Kgs bf  col. 8 *1.0%	(6) Cumulative Over or (Under) Production with limits  Kgs bf	(7) Cumulative Over or (Under) Production with limits (%)  col. 6 / 8	(8) Rolling 12 Month Total Quota  Kgs bf
<b>Feb-20</b>	1,001,524	899,946	101,578	-243,932	152,458	491,011	4.03%	12,196,610
<b>Mar-20</b>	1,055,461	1,073,511	(18,050)	-245,108	153,192	472,961	3.86%	12,255,382
<b>Apr-20</b>	970,693	865,580	105,113	-241,673	151,046	578,074	4.78%	12,083,667
<b>May-20</b>	1,020,648	947,006	73,642	-241,096	150,685	651,716	5.41%	12,054,823
<b>Jun-20</b>	990,904	989,664	1,240	-242,452	151,533	652,956	5.39%	12,122,607
<b>Jul-20</b>	1,023,353	1,044,803	(21,450)	-243,564	152,228	631,506	5.19%	12,178,203
<b>Aug-20</b>	1,023,170	1,005,440	17,730	-242,210	151,382	643,715	5.28%	12,110,521
<b>Sep-20</b>	1,022,765	1,040,287	(17,522)	-241,699	151,062	622,175	5.15%	12,084,970
<b>Oct-20</b>	1,089,543	1,149,939	(60,396)	-241,828	151,143	561,779	4.94%	12,091,404
<b>Nov-20</b>	1,048,426	1,077,998	(29,572)	-241,673	151,046	567,629	5.10%	12,083,648
<b>Dec-20</b>	1,110,597	1,138,227	(27,630)	-243,172	151,983	588,785	4.84%	12,158,620
<b>Jan-21</b>	1,106,333	1,059,133	47,200	-245,941	153,713	635,986	5.28%	12,297,055
<b>Feb-21</b>	995,725	981,147	14,578	-247,565	154,728	663,911	5.36%	12,378,256

- (1) Monthly Production in Saskatchewan
- (2) Total Monthly Quota = Class 1 sales + Monthly MSQ + Carry Forward
- (3) Difference between the monthly production (1) and the total monthly quota (2)
- (4) The Lower Flexibility Limit is -2.00% of Rolling 12 Month Total Quota (9)
- (5) The Upper Flexibility Limit is 1.25% of Rolling 12 Month Total Quota (9)
- (6) Previous Month Cumulative Over or (Under) Production + Current Monthly Over or (Under) Production (capped at lower or upper limit if applicable)
- (7) Equal to Column (6) expressed as a percentage basis within the flexibility limits
- (8) Total Monthly CDC Quota Allocation for the previous 12 months





## INHIBITOR TEST STATIONS

SaskMilk has established a number of inhibitor test stations around the province. Producers needing to check their bulk tanks for inhibitors can take a sample to the test station closest to their location.

The test stations have the Charm Trio test strips available for testing. The Charm Trio test is the test that the plant uses. It tests for the following drugs:

Beta-lactam Drug	Detection Level† (ppb*)	US Safe Level or Tolerance / Canadian MRL (ppb*)	Sulfa Drug	Detection Level† (ppb*)	US Safe Level or Tolerance / Canadian MRL (ppb*)
Amoxicillin	3.1	10 / None	Sulfadimethoxine	4.7	10 / 10 <sup>∞</sup>
Ampicillin	7.7	10 / 10	Sulfamethazine	7.7	10 / 10 <sup>∞</sup>
Ceftiofur and Metabolites <sup>^</sup>	53	100 / 100	Tetracycline Drug	Detection Level† (ppb*)	US Safe Level/Tolerance / Canadian MRL (ppb*)
Cephapirin	14	20 / 20	Chlortetracycline	54	300 / 100
Cloxacillin	7.4	10 / None	Oxytetracycline	66	300 / 100
Penicillin G	2.2	5 / 6 <sup>&amp;</sup>	Tetracycline	21	300 / 100

† Positive at least 90% of the time with 95% confidence.

\* parts per billion or ng/mL

<sup>^</sup> Ceftiofur parent drug sensitivity is approximately 1/2 that reported in the table.

<sup>&</sup> Canadian MRL for penicillin G is 0.01 IU/ml, equivalent to 6 ppb.

<sup>∞</sup> Canadian MRL for sulfa drugs are singly or in combination with other MRL listed sulfonamides.

Test stations are located at the following locations:

1. Swift Current, SK - Agrifoods truck bay - 675 Cheadle Street West Office 306-773-1097 or Rodger Ruf 306-741-3261
2. Star City, SK - Star City Colony - Reuben Tschetter 306-921-9381
3. Grenfell, SK - Jim Ross 306-697-2232
4. Yorkton, SK - Ford Dairy Farms Inc. - Bud and Margaret Ford 306-782-7240
5. Saskatoon, SK - Agrifoods Truck Bay - east of the Saputo plant receiving bay lead hand - Mike V. or Mike K. 306-664-0202 after hours: 306-668-8135

Charm tests strips and Charm testers are now available for purchase through SaskMilk. Agrifoods is now carrying SNAP test kits for tetracyclines as well as beta lactams. For further information you can contact: Deb Hauptstein 306-721-9486

# Code of Practice

## 5.1.3 Arranging Transport

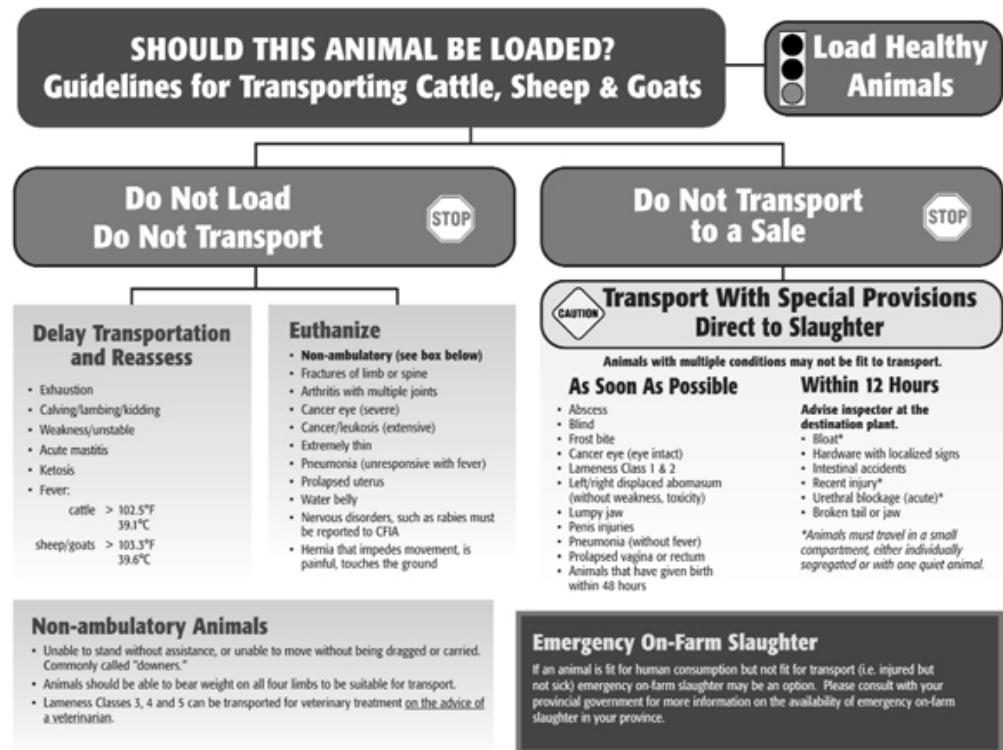
Producers have a responsibility to ensure that the transporter they hire is trained and qualified.

### RECOMMENDED BEST PRACTICES

- a. ensure only trained people load, unload and transport dairy cattle
- b. ensure all required paperwork (e.g., livestock manifests, bills of lading, emergency contact information) is completed and provided to the transporter
- c. ensure loading facilities are compatible with the type of trailer being used by the transporter
- d. ensure the following information is discussed and agreed upon between transporter and shipper (refer to [Appendix I - Livestock Transport Consignment Form](#)):
  - o number of cattle to be shipped
  - o type of cattle (e.g., yearling heifers, mature cows, bulls, calves)
  - o time and point of loading
  - o destination
  - o special requirements, if any, of the animals being transported
  - o special protection for all cattle from cold weather, especially for calves
- e. follow these guidelines when selecting a carrier:
  - o if you have never used a particular transporter before, ask for a list of references that provides information on other dairy and/or livestock shippers that have used that carrier
  - o make sure that the carrier is experienced with your needs (e.g., short vs. long distance hauls)
  - o how long has the carrier been in business
  - o is the carrier a member of a recognized and credible trade association/organization?
  - o most provincial transportation ministries maintain operating and safety data on commercial carriers, sometimes referred to as a Commercial Vehicle Operating Record or CVOR. In addition, carriers can apply to have safety ratings assessed against them (e.g., satisfactory, unsatisfactory). If they are assessed, their ratings are usually published on the provincial ministry website
  - o does the carrier utilize formal training methods for their drivers in the care, handling and transportation of animals?
  - o the carriers should be familiar with the [Code of Practice for Transportation](#) and have a copy
  - o the carrier should have all the requisite vehicle registrations in place (e.g., vehicle licensing, fuel tax registration, appropriate operating authorities) if the load is moving out of the province (e.g., to another province or to the United States).



## Should this Animal be Loaded?



Your workforce solution...

# HOST YOUNG SKILLED FARMERS

International Rural Exchange Canada is the solution for a reliable, cost-effective source of employees. We support you, while you provide paid employment for skilled farmers from western Europe.



Call our office or visit our website!

**306-489-4407** [irecanada.ca](http://irecanada.ca)

Our NPO has been supporting Canadian farmers for over 30 years.

## DAIRY FARM WORKERS

**AVAILABLE IMMEDIATELY!**



- **DAIRY, HOG & POULTRY WORKERS**
- **TRUCK DRIVERS, COMBINE OPERATORS**
- **GENERAL LABOR & MANY MORE.**

**ATLANTIC JOB'S** provides you with :

- **Very experienced dairy farm workers**
- **Workers providing permanent long term commitment to you**



# Atlantic

JOBS Ltd.

**Specializing In Skilled Jobs Placement**

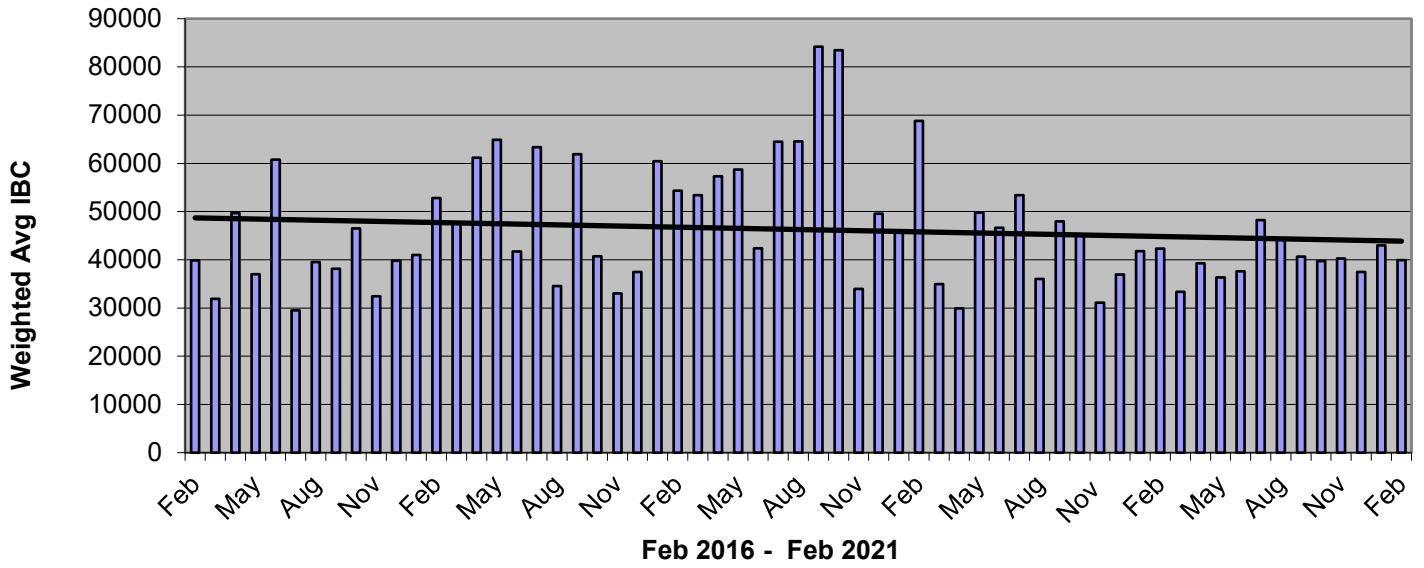
We will make your hiring process easy and stress free by securing the best workers available that have the experience, skills, qualifications and language requirements to help your business prosper.

**ATLANTIC JOBS** has partnered with farmers for many years to provide excellent results.

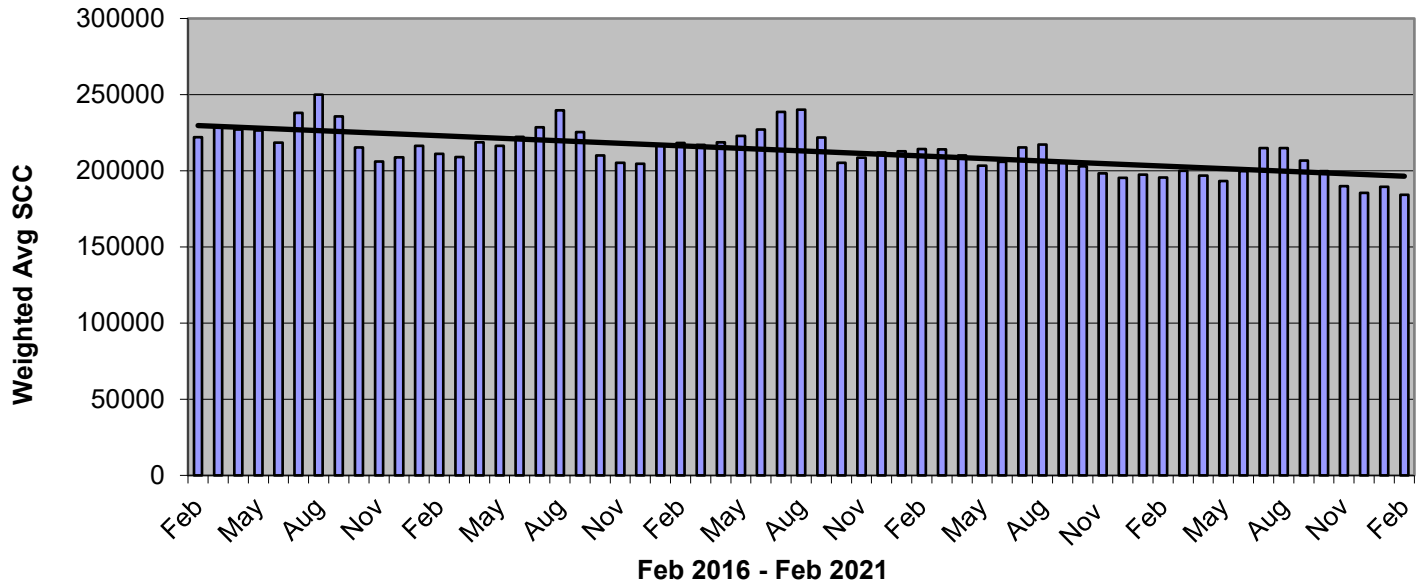
**Call now** for information at absolutely no obligation to you

**1-877-488-4699 or email [CLIENTS@ATLANTICJOBS.NET](mailto:CLIENTS@ATLANTICJOBS.NET)**

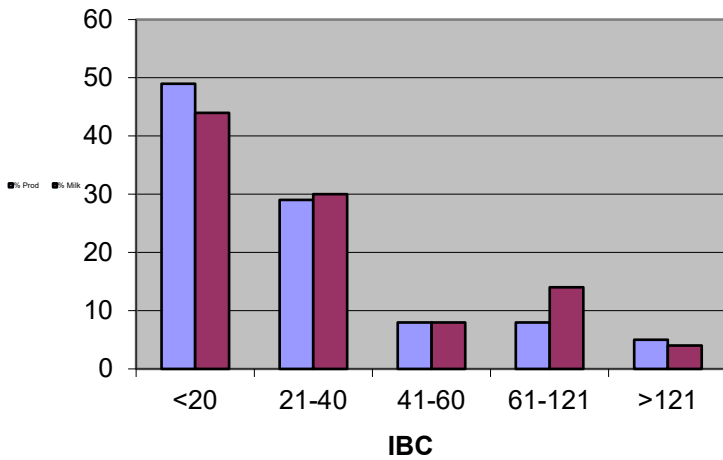
### Monthly Weighted Average IBC



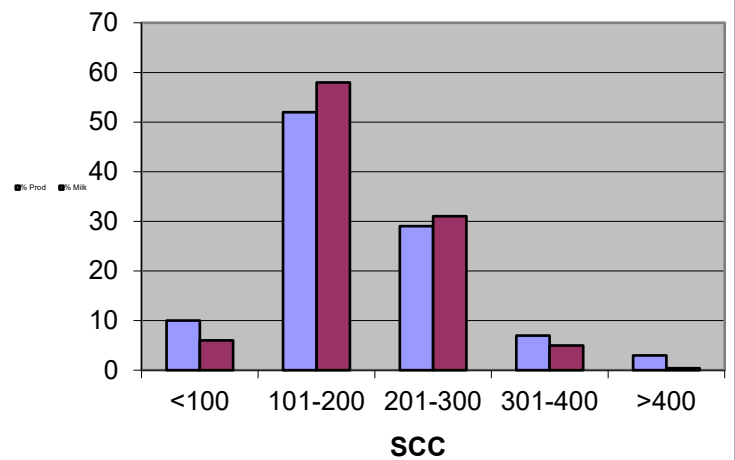
### Monthly Weighted Average SCC



#### Feb 2021



#### Feb 2021







**FEBRUARY  
Quality Bonus**

To get the quality bonus producers must have:

Monthly Average:

IBC - <= 30,000/ ml

SCC- <= 250,000/ml

FpT- lower than -0.525°Hortvet

No positive inhibitors

\*represent # of months the quality bonus has been received

HUT BRET CHURCH OF BEECHY**	J & J BOOT DAIRY LTD**	WHEATLAND HUTT BRET OF CABRI*
BENCH COLONY*	SEPT SUN ACRES LTD**	DALKIM HOLSTEINS LTD*
BROYHILL HOLSTEINS**	KESSEL FAMILY FARM**	Q VALLEY FARM LTD**
CARONCREST FARMS LTD**	ELKREST FARMS LTD**	WALLYWAY FARMS LTD**
CLEAR SPRING COLONY*	J-C LAND & LIVESTOCK LTD**	BLU J FARMS**
CRAILA DAIRY LTD**	KNITTIG FARMS LTD**	GREENDALE DAIRY*
BENBIE HOLSTEINS LTD**	ARTLAND DAIRIES INC**	HIGHDALE FARMS LTD**
LEGEND DAIRY*	LAKEVIEW COLONY**	WILLOW PARK COLONY**
LOVHOLM HOLSTEINS**	HAVERLAND DAIRY LTD**	EAGLEWOOD HOLDINGS LTD**
DOWNIE LAKE COLONY**	NIENHUIS FAMILY FARM INC*	K & K THONER DAIRY LTD**
EATONIA HUTT BRETH**	MAIN CENTRE DAIRY FARM**	SPRING LAKE COLONY**
BRUINSDALE FARMS LTD**	DAUM DAIRIES**	BUTTE COLONY**
ENNS FARMS LTD**	MIL-EN-ROY FARMS (1981) LTD**	BRAMVILLE JERSEYS**
W.C.C. DAIRIES CORP**	LAZY DAY FARMS**	EARVIEW COLONY**
RIVERSIDE DAIRY LTD*	STAR VALLEY FARM PART**	BARMOOR FARMS LTD*
FEHR'S RIVERFRONT FARM**	HUTT BRET QUILL LAKE**	SUNNYSIDE DAIRY**
FOTH VENTURES LTD**	LEYENHORST, A & H**	PLUM BLOSSOM FARM LTD.(SASK)**
KENBERT ACRES**	VANZESSEN DAIRY INC**	JBK FARMS LTD*
BERKHOUT, SIMON & ARJA**	RIBSTONE HUTT COLONY*	HYLJON HOLSTEINS LTD**
GLIDDEN HUTTERIAN BRETHREN**	HUTT BRET CHURCH OF RIVERVIEW **	WESTWIKK FARMS**
FOX VALLEY FARMING CO**	JIMLEE FARMS LTD**	GRASSY HILL COLONY
HODGEVILLE COLONY**	E.S.B. HOLDINGS LTD**	HUTT BRET SOUTHLAND**
PONTEIX COLONY*	SAND LAKE HUTT BRET**	WIEBE, CORNY & TRACY*
HUTT BRETH SPRING CREEK**	SCHAEFFER, RONALD**	ADIT FARMS INC*
HUTT BRET SWIFT CURRENT**	101115806 SASK LTD**	GIESBRECHT, KEN & KAREN*
HUTT BRETH KYLE*	SIMMIE HUTT BRET**	BERG DAIRIES*
HUTT BRET LAJORD**	SMILEY HUTT BRET**	RICHARD VAN DONGEN**
HUTT BRET DINSMORE**	HUTT BRET CHURCH OF START CITY*	LAKEVIEW HOLSTEINS LTD**
ROSETOWN FARMING CO**	BALGONIE HOLSTEINS LTD**	BOESE, AREDEL & LENORA**
HUTT BRET WEST BENCH**	DALVOORDE DAIRIES LTD**	
HUTT BRET SPRINGWATER*	VANGUARD HUTT BRET**	

## Did You Grow Perennial Silage in 2020?

Dairy Farmers of Canada and Agriculture and Agri Food Canada have funded a nation-wide study of silage production and management factors and linking them to silage quality.

The goal of this study is to develop best management practices (BMP) for silage production based on geographical region and silage system. This study is part of an interprovincial effort to improve the sustainability of the Canadian dairy industry by providing producers with evidence-based information on silage BMP's and therefore reduce production costs.

### Eligible to Participate?

We need producers who...

- Grew perennial (alfalfa, grass, or grass/alfalfa mix) silage in 2020; and
- Stored their first cut silage in a bunker, drive over pile, vertical silo, or as wrapped bales.

### Two Ways to Participate

#### 1. Complete a Survey

- a. Follow the link <https://www.surveymonkey.com/r/2020CDNSilageStudy>  
It only takes a few minutes and includes questions related to general farm characteristics, silage management and the storage of your 2020 first cut perennial silage.
- b. Fill in a paper copy of the survey. To receive a copy as well as a self-addressed envelope, please contact Carla by phone or email (see below).

**OR**

#### 2. Submit a sample

- a. Arrange a farm visit for us to collect a 1 kg silage sample and a short survey (can be by phone or email). Your silage sample analysis results including *in vitro* dry matter digestibility will be sent to you.

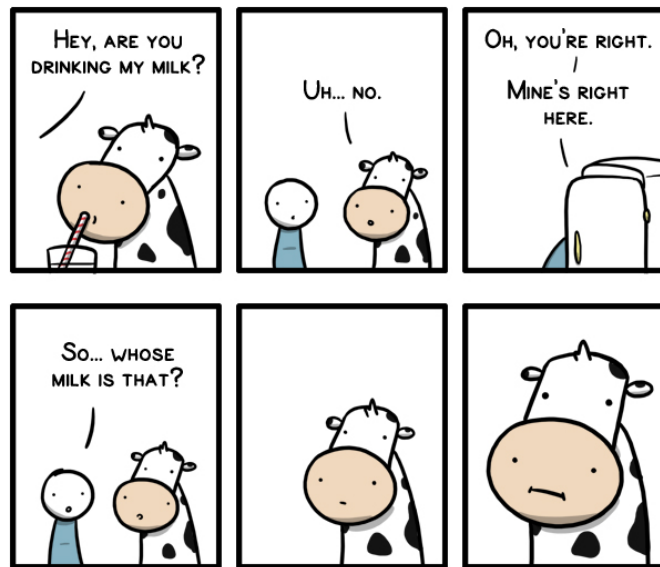
For more information on the study and how you can participate please contact:

Carla Plett M.Sc. Student, Dairy Science

University of Manitoba

Email: [plettc35@myumanitoba.ca](mailto:plettc35@myumanitoba.ca)

Cell: 1-204-371-5272





Phone: 1-866-358-4324

Email: sales@agfluid.com

## Next-Gen Oxidation Technology

Our products offer a unique mixture of minerals and oxygen in liquid form offering you control over viruses, bacteria, microbes, molds, pathogens, and organics in drinking water.

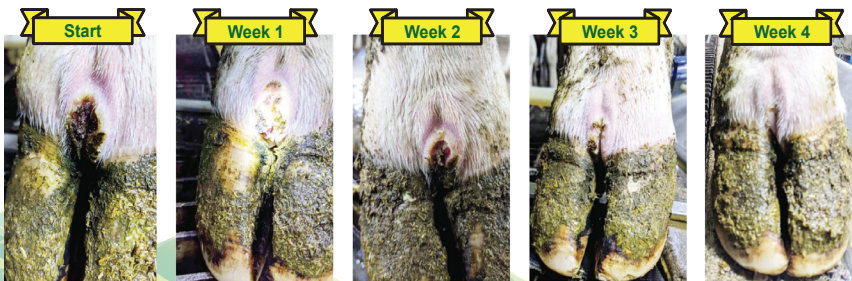


+ Comparison of Oxidants					
	Excellent	Good	Fair	Poor	
	AFP Chemicals	Ozone Injection	Chlorine Compounds	Hydrogen Peroxide	Potassium Permang
Hydrogen Sulphide					
Ferrous Ions					
Manganous Ions					
Colour					
Reduce Precursors to Cl Organics					
Common Odors					
Earthy Musty Odors					
Enhance Coagulation					
Residual Maintenance					
Overall Rating					

Residuals non-toxic / By-products non-toxic - Products are available in 20, 60, 210, and 1250L quantities

## CASE STUDY

Digital dermatitis case study at a central Alberta 120 milking dairy farm from Oct 1 - 31, 2020



FOOT BATH CONCENTRATE



High Quality Disinfection Concentrate

Improved foot bath concentrate designed specifically for dairy farms. Low mixing ratio required  
0.5% - 0.75%



## QUOTA LISTING or CLASSIFIED AD SERVICE

SaskMilk offers a free quota listing service as part of its Newsletter. Anyone wishing to sell or purchase quota, cows or miscellaneous dairy equipment is welcome to contact the SaskMilk office at (306) 949-6999. All prices and negotiations will be independent of SaskMilk. **Please note that ads will be posted in two issues and will then be removed unless SaskMilk is notified otherwise.**

### CLASSIFIEDS

#### DOWN-sizing HERD OF REGISTERED HOLSTEINS

For Sale: 1) Calves 1-6 months  
2) Calves 6-12 months  
3) Breeding Heifers  
4) Bred & Spring Heifers  
5) 1st, 2nd, & 3rd Calvers

LOTS OF DEEP PEDRIGREES AS MAJORITY WILL HAVE VG OR EX DAMS FROM TODAY'S TOP LEADING SIRES

**Please contact: Lyle Pretty (306) 535-3889 at MILEN-ROY Farms 1981 Ltd., White City, SK**

Looking for a hoof trim chute.  
New or used.  
Call or text **Kevin** as **780-806-6278**

### **Reminder!**

**The deadline date for Quota Transfer, Quota Exchange, and 10% Transfer Limit Exemptions is the 6<sup>th</sup> of each month**

Your Quota Transfer, and 10% Exemption Applications must be received on or before the 6<sup>th</sup> of the month in order to be effective the 1<sup>st</sup> of the following month

Quota Exchange forms must be received in the SaskMilk office on or before the 6<sup>th</sup> of the month for that month's Exchange

#### **BOARD OF DIRECTORS**

Matthew Flaman – Chair  
(306) 537-9634  
[flamanmj@gmail.com](mailto:flamanmj@gmail.com)

Albert Leyenhorst – Vice-Chair  
(306) 230-0154  
[albertleyenhorst@gmail.com](mailto:albertleyenhorst@gmail.com)

Gordon Ell – Second Vice-Chair  
(306) 535-1922  
[gt.ell@sasktel.net](mailto:gt.ell@sasktel.net)

Brian Lindenbach  
(306) 591-0315  
[broyhill192@gmail.com](mailto:broyhill192@gmail.com)

Jessica Lovich  
(306) 201-7362  
[j\\_simanton@hotmail.com](mailto:j_simanton@hotmail.com)

Tom MacKenzie  
(306) 352-2292  
[tommymilk@icloud.com](mailto:tommymilk@icloud.com)

Blaine McLeod  
(306) 631-8053  
[rb.mcleod@sasktel.net](mailto:rb.mcleod@sasktel.net)

Anthony Nienhuis  
(306) 221-1598  
[nienhuis@sasktel.net](mailto:nienhuis@sasktel.net)

Leonard Wipf  
(306) 491-0432  
[leonard.countryclover@gmail.com](mailto:leonard.countryclover@gmail.com)

For further information, please contact the SaskMilk office.  
444 McLeod Street  
Regina, Saskatchewan S4N 4Y1  
Telephone: (306) 949-6999  
Fax: (306) 949-2605  
Website: [www.saskmilk.ca](http://www.saskmilk.ca)