

In this Issue:

Did You Know?.....	2
Quota Exchange	7
Production	10
Code of Practice.....	12
SCC/IBC.....	14
Classifieds	16
Directors.....	16

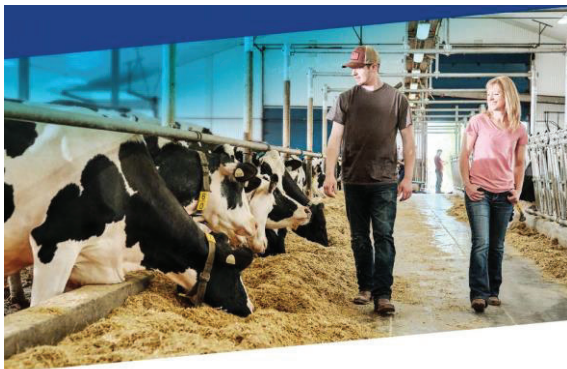
2021 Lobby Day & Dairy Farmers of Canada Annual Policy Conference

On February 9th, dairy farmers from across Canada met with provincial MPs and Senators to discuss current issues facing the dairy industry. While this year looked different due to Covid-19, virtual meetings proved to be an effective medium to connect with our local politicians to discuss current issues facing the industry.

This year, conversations were held regarding current and future trade deals, TRQ allocation, and regulation and enforcement at the border for products entering the country under the new trade deals. In addition, mention of limitation of use for dairy-like messaging and imagery on plant-based products (as has been proposed in the European Union) was discussed with MPs and senators.

In the meetings, directors took the time to thank representatives for their support in securing the promised compensation for the losses experienced through CETA and CPTPP. Further compensation for the Canada-United States-Mexico Agreement (CUSMA) was also discussed to address the losses experienced through this trade deal. As producers are aware, by 2024, 18% of the Canadian dairy market will be accessible by foreign producers.

On CUSMA, producers reinforced their support of Canada protecting and defending the sovereign right to administer our own domestic policies, including those that impact supply management. This includes TRQs, which are allocated to retailers or processors who can use them to import a set amount of specific products (milk, cheese, yogurt, etc.) at a low or zero rate of duty. Recently, the United States and Canadian government have been in the news regarding Canada's right to allocate and administer its own TRQs. This is fully permitted under CUSMA and it is important that the government remains steadfast in its intention to administer its own policies.



In addition to CETA, CPTPP, and CUSMA, the Lobby Day meetings were used, once again, to express the expectation that the government will keep its work and not grant any additional domestic dairy market access in a permanent trade deal with the United Kingdom (following Brexit) or in any other trade agreement. While no new access was granted in the

Canada-UK transitional free trade agreement, there is the possibility that the UK could request further access in a permanent agreement.

Finally, with the increased access granted to foreign producers, border controls were discussed with MPs and Senators. These controls are necessary to ensure that the correct amounts, as well as quality standards, are adhered to for all dairy products coming into Canada. Proper staffing and training for those working our border will be essential for the success on this file.

Following Lobby Day, the DFC Policy Conference was held virtually on February 10th & 11th. Presentations included DFC economists, marketing strategists, an address from Prime Minister Justin Trudeau, a live appearance by Minister of Agriculture & Agri-Food Marie-Claude Bibeau, a live presentation by the Honourable Stephen Harper, and a live presentation by former Governor of Vermont Howard Dean. Topics included Dairy Farmers of Canada's plans for the coming year, Canada's commitment to supporting dairy farmers in the country, and relations with the United States. The Policy Conference ended with a virtual interactive session for producers to provide feedback and ideas for the current issues and initiatives facing the Canadian dairy sector. These sessions provided constructive feedback for the DFC staff.




Did You Know?

UPDATING YOUR CONTACT INFORMATION

**IMPORTANT FOR DDPP PAYMENT*

Up to date contact information can help disseminate information quicker in case of emergencies or urgent matters. It is essential that if ANY of your contact information changes, you make these changes in your portal account.

The SaskMilk Producer Portal allows you to modify your contact information to ensure that your information is accurate. See instructions below:

1. From the Contact menu item select Contacts
2. Click the view button () beside the contact needing to be updated
3. Click the blue Edit button (bottom right)
4. Update the record (ie. address, email, contact number, etc)
5. Hit save

SaskMilk Updates

Progressive Penalty System

Effective August 2021, SaskMilk will be switching from an averaging quality penalty system to a progressive penalty system for quality violations.

Producers are now receiving a monthly summary of their quality results showing how the progressive penalty system would be applied to their current quality results. The summaries have been calculated starting August 2020 running to July 31, 2021. The goal of the summary is to have producers become familiar with and understand how the Progressive penalty system will be applied to quality results.

If you have any comments or suggestions regarding the Progressive Penalty system you can contact one of your SaskMilk Board members or Deb Haupstein deb.haupstein@saskmilk.ca or Emily Morabito emily.morabito@saskmilk.ca.

Admin Levy

Due to an error, the change in admin levy from a calculation based on HL to kilogram of butterfat was missed in the month of January. This change will be made effective February 2021 and no retroactive adjustments will be made

SaskMilk in the Community



Sadie Capewell does a great job representing Sask dairy farmers in her cow print skirt! SaskMilk sponsored “Western Day” at her elementary school.

Western Canadian Dairy Seminar

Registration is now OPEN for the 2021 Western Canadian Dairy Seminar

Join us online, March 8 to 12, 2021 for the 'Virtual. Dairy. Reality' Western Canadian Dairy Seminar (WCDS). Spread out over 5 days (2-3 hours a day), the virtual (online) version of WCDS 2021 gives you the opportunity to hear about recent research and new technology from speakers presenting on a range of topics, including calf health, nutrition, and reproduction.

There will also be virtual tours of 3 progressive dairy farms across Western Canada, a live student research presentation competition (delegates can vote for their favorite presentation) and, the always popular, producer panel. The virtual trade show area gives you the chance to connect with our industry sponsors as well as discuss the latest dairy-related research in the virtual research poster display section.

View the program at www.wcds.ca/program

The 2021 program and the event itself has something for everyone.

Registration is just \$50 and includes all presentations, the farm tours as well as access to the virtual trade show area. All producers who register before February 8, will also be entered in a draw to win 1 of 100 WCDS Event Kits!

Register today at www.wcds.ca/registration

We look forward to connecting with you online



Western Canadian Dairy Seminar

Virtual. Dairy. Reality.

March 8 – 12, 2021

View the program and register at
www.wcds.ca



Follow Us! @wcds_dairy



Times have changed: Selective dry cow therapy

Is this a good option for your herd?

Choose your preferred time:

Mar 2 2021

12:30-1:30PM MST

[**REGISTER HERE**](#)

Mar 3 2021

12-1PM EST

[**REGISTER HERE**](#)

David Kelton
DFO Research Chair in
Dairy Cattle Health
University of Guelph

Richard Cantin
Business Development
Lactanet Canada

Who Should I Call?

Who at the SaskMilk office should producers call? Here's a handy guide!

<i>For...</i>	<i>Call...</i>	<i>At...</i>
<ul style="list-style-type: none"> ➤ Sponsorship Requests ➤ Donation Requests ➤ Dairyanna's Costume and Events ➤ School Milk Program ➤ Nutrition Resource Ordering 	Anita Medl	306-721-9483
<ul style="list-style-type: none"> ➤ Quota Exchange and Private Quota Transfers ➤ Leases ➤ Transfer Credits ➤ Security Applications ➤ Projections for production ➤ Name Changes ➤ Designation of Signing Authority ➤ Monthly production numbers for producers 	Bev Solie	306-721-9488
<ul style="list-style-type: none"> ➤ School Milk Program ➤ Marketing Activities 	Chelsea Wilcoxon	306-527-0753
<ul style="list-style-type: none"> ➤ Producer statements ➤ Banking info for direct deposit of milk pay ➤ Milk pick-up issues –variances in volumes, planning to quit shipping, etc. 	Darlene Weighill	306-721-9491
<ul style="list-style-type: none"> ➤ On Farm- licensing, facilities, equipment, driveways, yards, animal care ➤ Lab testing results ➤ Bulk truck drivers- licensing, complaints/issues ➤ Bulk tank calibrations ➤ Pro Action- Food Safety (CQM), Animal Care, Traceability, Biosecurity, Environment 	Deb Haupstein	306-721-9486
<ul style="list-style-type: none"> ➤ Monthly milk prices paid to producers ➤ Provincial & National production updates 	Doug Miller	306-721-9485
<ul style="list-style-type: none"> ➤ Rayner Dairy Centre & Research ➤ Extension services 	Emily Morabito	306-966-6015
<ul style="list-style-type: none"> ➤ SaskMilk Portal Assistance 	Jenn Buehler	306-721-9492
<ul style="list-style-type: none"> ➤ Media or news stories <i>or</i> if you have been contacted by any media agency or reporter ➤ Trade agreements, international trade updates ➤ DEAP policy/program enquiries ➤ Research enquiries or proposals 	Joy Smith	306-721-9482
<ul style="list-style-type: none"> ➤ Social media enquiries (Twitter, Instagram, Facebook) ➤ Website enquiries ➤ Newsletter advertising ➤ Dairy Conference 	Julie Ell	306-721-9493

QUOTA EXCHANGE

There was no market-clearing price established for the February 2021 Quota Exchange.

The next Quota Exchange will be held on **March 15, 2021**. All offers to sell and bids to purchase quota through the Quota Exchange must be submitted by midnight, **March 6, 2021**. SaskMilk recommends that offers and bids be submitted well in advance of the deadline date to ensure adequate time for corrections, if necessary.

When making bids on the Quota Exchange, the price on offers to sell quota is the minimum price that the producer is prepared to accept for that quota. Only if the market-clearing price is equal to or greater than the producer's minimum price will that producer qualify for participation in the Exchange. Conversely, the price on offers to purchase quota is the maximum price that the producer is prepared to pay for that quota. Only if the market-clearing price is equal to or less than the producer's maximum price will that producer qualify for participation in the Exchange. The clearing price is set at the price where the smallest difference exists between the accumulated volume offered for sale and the accumulated volume bid to purchase. The results of the Quota Exchange are outlined in the following Table.

FEBRUARY 2021 QUOTA EXCHANGE RESULTS

Market Clearing Price per kilogram of butterfat	N/A
Daily Kilograms offered to Purchase	106.50
Kilograms offered to Sell	15.00
Kilograms sold	0.00
Number of Producers	
- offered to purchase	7
- purchased quota	0
- offered to sell	3
- sold quota	0

FEBRUARY 2021 QUOTA EXCHANGE CLEARING PRICE RESULTS

Price (\$/daily kg b.f.)	No. of Sellers	Cumulative Sellers	Daily Kgs b.f. offered for sale	Cumulative sales	Cumulative Sales less Cumulative purchases	Cumulative purchases	Daily Kgs b.f. offered to purchase	Cumulative bidders	No. of buyers
\$36,000.00	0	0	0.00	0.00	-106.50	106.50	10.00	7	1
\$38,500.00	1	1	3.00	3.00	-93.50	96.50	0.00	6	0
\$39,000.00	0	1	0.00	3.00	-93.50	96.50	9.00	6	2
\$39,100.00	0	1	0.00	3.00	-84.50	87.50	30.00	4	1
\$39,500.00	0	1	0.00	3.00	-54.50	57.50	27.50	3	2
\$40,000.00	1	2	4.00	7.00	-23.00	30.00	30.00	1	1
\$42,000.00	1	3	8.00	15.00	15.00	0.00	0.00	0	0

* Please contact Bev Solie at 306-949-6999 for inquiries dealing with quota management sheets, the Quota Exchange, for transfer credits, or with any other quota transactions.



TRANSFER CREDIT SUMMARY REPORT

MONTH	# OF PRODUCERS TRANSFER IN	# OF PRODUCERS TRANSFER OUT	TOTAL KGS BUTTERFAT
January, 2020	27	27	18,191
February	26	26	14,525
March	17	17	7,531
April	10	10	6,670
May	6	6	3,000
June	8	8	8,328
July	11	11	13,384
August	11	11	6,964
September	30	30	22,918
October	19	19	13,812
November	15	15	8,120
December	20	20	10,452
January, 2021	14	14	7,350

PRIVATE TRANSFERS PROCESSED

MONTH	DAILY KILOGRAMS
January, 2020	60.00
February	0.00
March	0.00
April	232.64
May	49.00
June	164.00
July	410.00
August	199.00
September	1,146.31
October	10.00
November	96.88
December	0.00
January, 2021	25.00

OVER QUOTA (OVER 5 DAYS)

REPORT BY MONTH

MONTH	# OF PRODUCERS	KGS BUTTERFAT
January, 2020	8	1,275
February	7	1,360
March	11	1,008
April	7	1,286
May	4	764
June	3	190
July	5	216
August	3	34
September	2	202
October	2	174
November	2	142
December	4	341
January, 2021	5	1,437

SUMMARY REPORT OF CREDITS JANUARY 2021 – 157 PRODUCERS

DAYS	# OF PRODUCERS	POSITIVE CREDITS ACCUMULATED (KGS OF BUTTERFAT)
+ 5	8	4,047
0 to + 5	27	8,596
TOTAL	35	12,643
DAYS	# OF PRODUCERS	NEGATIVE CREDITS ACCUMULATED (KGS OF BUTTERFAT)
-15	5	6,301
-10 to -15	29	74,786
-5 to -10	46	79,230
0 to -5	42	26,467
TOTAL	122	186,784

LOST OPPORTUNITY REPORT

MONTH	# OF PRODUCERS	LOST OPPORTUNITY (KGS OF BUTTERFAT)
January, 2020	3	1,374
February, 2020	3	1,183
March, 2020	1	648
April, 2020	4	1,416
May, 2020	9	2,479
June, 2020	8	3,531
July, 2020	10	3,572
August, 2020	8	2,022
September, 2020	6	617
October, 2020	3	491
November, 2020	3	255
December, 2020	4	844
January, 2021	5	1,006

WEIGHTED AVERAGE COMPONENT TESTS & PRICES JANUARY 2021

Components	Average Test	Price per kilogram Class 1 to 5
Butterfat	4.2920	16.774459
Protein	3.2699	2.590330
Other Solids	5.8636	0.722271

The average butterfat price received per kilogram was \$19.73.

SASKATCHEWAN MILK POOL RESULTS JANUARY 2021

Milk Sale Revenue	\$22,535,310.23
WMP Revenue/<Expense>	<\$700,964.20>
Total Revenue	\$21,384,346.03

In January, Saskatchewan had a monthly CDC allocation of **963,430 kilograms** of butterfat. In the month of January, Saskatchewan production was **141,844 kgs** of butterfat **over** and cumulatively **over** by **730,629 kgs** of butterfat. On a percentage basis, Saskatchewan is **5.99% above** our CDC allocation flexibility limits based on the Continuous Quota model. The **-2.00%** lower flexibility limit is in effect.

	(1) Monthly Total Production Kgs bf	(2) Total Monthly CDC Quota Allocation Kgs bf	(3) Monthly Over or (Under) Production Kgs bf col. 1 - 2 = 3	(4) Lower Flexibility Limit -2.00% Kgs bf col. 8 * -1.5%	(5) Upper Flexibility Limit 1.25% Kgs bf col. 8 * 1.0%	(6) Cumulative Over or (Under) Production with limits Kgs bf	(7) Cumulative Over or (Under) Production with limits (%) col. 6 / 8	(8) Rolling 12 Month Total Quota Kgs bf
Jan-20	1,095,413	920,697	174,716	-242,944	151,840	389,433	3.21%	12,147,191
Feb-20	1,001,524	899,946	101,578	-243,932	152,458	491,011	4.03%	12,196,610
Mar-20	1,055,461	1,073,511	(18,050)	-245,108	153,192	472,961	3.86%	12,255,382
Apr-20	970,693	865,580	105,113	-241,673	151,046	578,074	4.78%	12,083,667
May-20	1,020,648	947,006	73,642	-241,096	150,685	651,716	5.41%	12,054,823
Jun-20	990,904	989,664	1,240	-242,452	151,533	652,956	5.39%	12,122,607
Jul-20	1,023,353	1,044,803	(21,450)	-243,564	152,228	631,506	5.19%	12,178,203
Aug-20	1,023,170	1,005,440	17,730	-242,210	151,382	643,715	5.28%	12,110,521
Sep-20	1,022,765	1,040,287	(17,522)	-241,699	151,062	622,175	5.15%	12,084,970
Oct-20	1,089,543	1,149,939	(60,396)	-241,828	151,143	561,779	4.94%	12,091,404
Nov-20	1,048,426	1,077,998	(29,572)	-241,673	151,046	567,629	5.10%	12,083,648
Dec-20	1,110,597	1,138,227	(27,630)	-243,172	151,983	588,785	4.84%	12,158,620
Jan-21	1,105,274	963,430	141,844	-244,027	152,517	730,629	5.99%	12,201,353

(1) Monthly Production in Saskatchewan

(2) Total Monthly Quota = Class 1 sales + Monthly MSQ + Carry Forward

(3) Difference between the monthly production (1) and the total monthly quota (2)

(4) The Lower Flexibility Limit is -2.00% of Rolling 12 Month Total Quota (9)

(5) The Upper Flexibility Limit is 1.25% of Rolling 12 Month Total Quota (9)

(6) Previous Month Cumulative Over or (Under) Production + Current Monthly Over or (Under) Production (capped at lower or upper limit if applicable)

(7) Equal to Column (6) expressed as a percentage basis within the flexibility limits

(8) Total Monthly CDC Quota Allocation for the previous 12 months

SK Milk Production SK Position



INHIBITOR TEST STATIONS

SaskMilk has established a number of inhibitor test stations around the province. Producers needing to check their bulk tanks for inhibitors can take a sample to the test station closest to their location.

The test stations have the Charm Trio test strips available for testing. The Charm Trio test is the test that the plant uses. It tests for the following drugs:

Beta-lactam Drug	Detection Level [†] (ppb*)	US Safe Level or Tolerance / Canadian MRL (ppb*)	Sulfa Drug	Detection Level [†] (ppb*)	US Safe Level or Tolerance / Canadian MRL (ppb*)
Amoxicillin	3.1	10 / None	Sulfadimethoxine	4.7	10 / 10 [∞]
Ampicillin	7.7	10 / 10	Sulfamethazine	7.7	10 / 10 [∞]
Ceftiofur and Metabolites [^]	53	100 / 100	Tetracycline Drug	Detection Level [†] (ppb*)	US Safe Level/Tolerance / Canadian MRL (ppb*)
Cephapirin	14	20 / 20	Chlortetracycline	54	300 / 100
Cloxacillin	7.4	10 / None	Oxytetracycline	66	300 / 100
Penicillin G	2.2	5 / 6 ^{&}	Tetracycline	21	300 / 100

[†] Positive at least 90% of the time with 95% confidence.

* parts per billion or ng/mL

[^] Ceftiofur parent drug sensitivity is approximately 1/2 that reported in the table.

[&] Canadian MRL for penicillin G is 0.01 IU/ml, equivalent to 6 ppb.

[∞] Canadian MRL for sulfa drugs are singly or in combination with other MRL listed sulfonamides.

Test stations are located at the following locations:

1. Swift Current, SK - Agrifoods truck bay - 675 Cheadle Street West Office 306-773-1097 or Rodger Ruf 306-741-3261
2. Star City, SK - Star City Colony - Reuben Tschetter 306-921-9381
3. Grenfell, SK - Jim Ross 306-697-2232
4. Yorkton, SK - Ford Dairy Farms Inc. - Bud and Margaret Ford 306-782-7240
5. Saskatoon, SK – Agrifoods Truck Bay - east of the Saputo plant receiving bay
lead hand – Mike V. or Mike K. 306-664-0202 after hours: 306-668-8135

Charm tests strips and Charm testers are now available for purchase through SaskMilk. Agrifoods is now carrying SNAP test kits for tetracyclines as well as beta lactams. For further information you can contact: Deb Hauptstein 306-721-9486

Code of Practice

5.1.2 Preparing Cattle for Transport

Preparation for transport starts long before the trip actually begins. Management factors such as opportunities for exercise, lameness prevention, nutrition and other factors have a collective impact on fitness for transport. They must be dealt with together and not in isolation.

REQUIREMENTS

Calves must have received adequate colostrum before being transported. Dairy animals must be fed and watered within five hours before being loaded, if the expected duration of the animal's confinement is longer than 24 hours from the time of loading.

RECOMMENDED BEST PRACTICES

- ensure unweaned calves are given at least half of that day's ration of milk prior to transportation
- load calves for transport only if they are healthy and vigorous
- lactating cows should be milked out immediately before being transported
- dry off heavy lactating cows destined for slaughter before shipping to auction. If this is not feasible, ship directly to an abattoir (see Appendix G - Guidelines for Dealing with Compromised Cattle)
- remove any hobbles used for handler safety reasons before an animal is transported
- ensure all required documentation is completed to avoid unnecessary delays at inspection stations, other checkpoints, or for shipments of cattle leaving the country.

Appendix G



Guidelines for Dealing with Compromised Cattle

Guidelines for Dealing with Compromised Cattle, Sheep & Goats

Federal Transportation Regulations

Health of Animals Regulations www.inspection.gc.ca

DO

- Segregate animals of different species, or substantially different weights and ages, or if incompatible by nature.
- Provide proper ventilation, drainage and absorption of urine.
- Have sufficient headroom for animals to stand in a natural position.
- Either strew the vehicle with sand or have the vehicle fitted with safe footholds, in addition to appropriate bedding.
- Ensure that animals unloaded for feed, water and rest remain at least five hours and longer, if necessary, for all animals to receive food and water.
- Ensure that calves too young to exist on hay and grain are provided with suitable food and water at intervals of no more than 18 hours.
- Ensure that animals segregated in trucks receive extra protection from cold and wind chill; supply ample bedding.
- Euthanize animals promptly when you identify conditions outlined in the "Should this Animal be Loaded?" chart.

DO NOT

- Transport a sick or injured animal where undue suffering may result, or when the animal is liable to give birth during the journey.
- Continue to transport an animal that is injured, becomes ill, or is otherwise unfit to travel beyond the nearest place it can be treated.
- Mishandle an animal on loading or unloading.
- Use goads or prods on the face, anal, udder or genital area.
- Load or unload animals in a way that would cause injury or undue suffering.
- Crowd animals to such an extent as to cause injury or undue suffering.
- Transport livestock in trailers not designed for safe handling of that species or class of livestock.

Source: *Transporting Livestock by Truck (CFIA)*

Lameness Classes

These categories can be used to determine the status of an animal's mobility, from normal to non-ambulatory.

Transport as soon as possible

Class 1

Visibly lame but can keep up with the group; no evidence of pain.

Class 2

Unable to keep up; some difficulty climbing ramps. *Load in rear compartment.*

Not Recommended for Transport*

Class 3

Requires assistance to rise, but can walk freely.

Do Not Load or Transport*

Class 4

Requires assistance to rise; reluctant to walk; halted movement.

Class 5

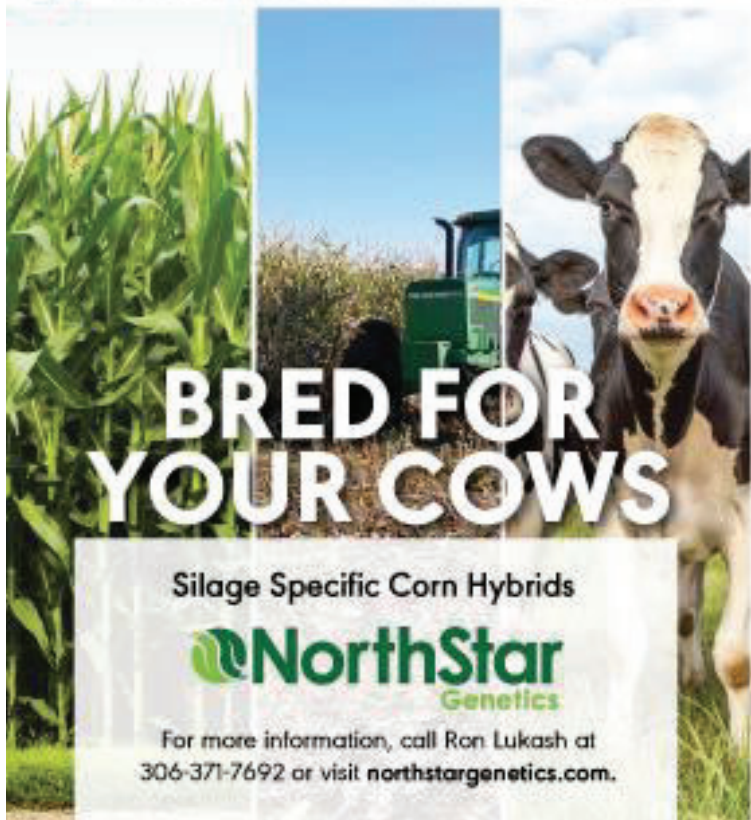
Unable to rise or remain standing.

*** Any animal, including Lameness Classes 3, 4 or 5 may be transported for veterinary treatment, on the advice of a veterinarian.**

Special thanks to the Ontario Humane Transport Working Group. Funding for this project was provided in part through Agriculture and Agri-Food Canada's Advancing Canadian Agriculture and Agri-Food Program. This is a collective outcome partnership with the Agricultural Adaptation Council in Ontario, the Manitoba Rural Adaptation Council, the Saskatchewan Council for Community Development and Alberta Agriculture and Food.

For more information or additional copies, please contact any of the groups listed below:

 Proud to be 100% Western Canadian owned and focused.



BRED FOR YOUR COWS

Silage Specific Corn Hybrids

NorthStar
Genetics

For more information, call Ron Lukash at 306-371-7692 or visit northstargenetics.com.

913S  2100-2200 CHU 75 DAY RM	917S  2150-2250 CHU 77 DAY RM	932S   2300-2400 CHU 89 DAY RM
---	--	---

- Exceptional tonnage
- Tall hybrids with large, flex ears
- Very good roots and standability
- High quality silage
- Extended chopping window
- Short fermentation period
- Increased fibre digestion
- Highly available starch
- Improved feed to milk conversion

 **0% financing available through John Deere Financial**

© NORTH STAR GENETICS 2021
ALWAYS READ AND FOLLOW PESTICIDE LABEL DIRECTIONS. Roundup Ready 2 Technology contains genes that confer tolerance to glyphosate. Glyphosate will kill crops that are not tolerant to glyphosate. Roundup Ready 2 is a registered trademark of Bayer CropScience. Used under license.

DAIRY FARM WORKERS AVAILABLE IMMEDIATELY!



- **DAIRY, HOG & POULTRY WORKERS**
- **TRUCK DRIVERS, COMBINE OPERATORS**
- **GENERAL LABOR & MANY MORE.**

ATLANTIC JOB'S provides you with :

- **Very experienced dairy farm workers**
- **Workers providing permanent long term commitment to you**



Atlantic
JOBS Ltd.

Specializing In Skilled Jobs Placement

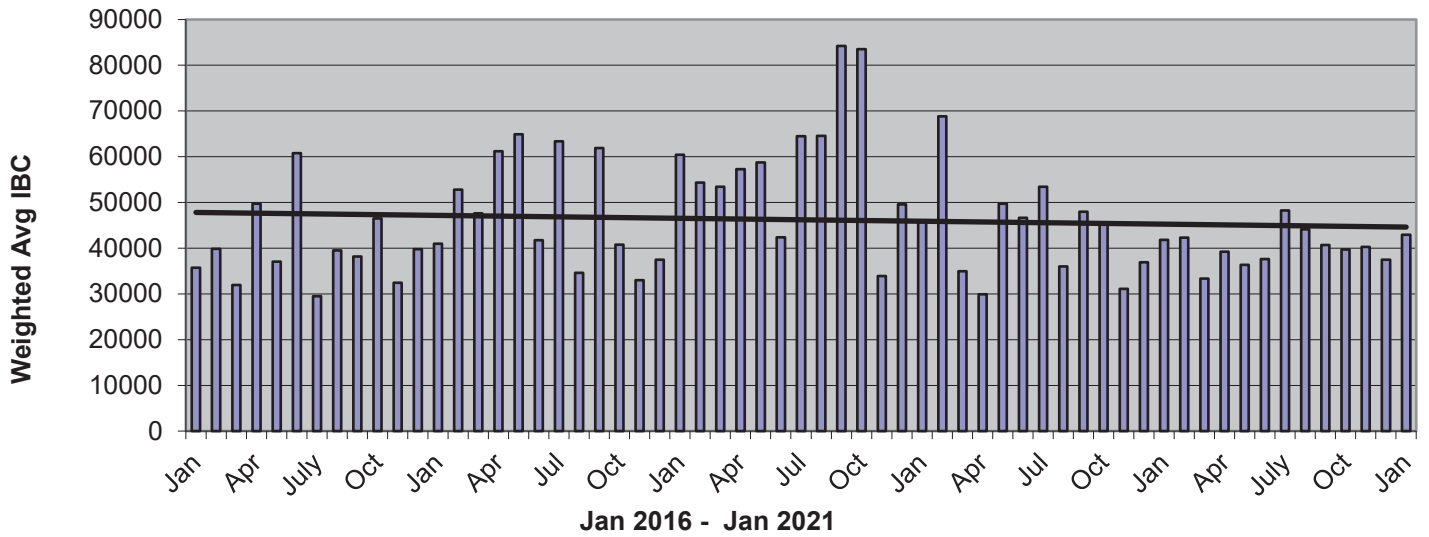
We will make your hiring process easy and stress free by securing the best workers available that have the experience, skills, qualifications and language requirements to help your business prosper.

ATLANTIC JOBS has partnered with farmers for many years to provide excellent results.

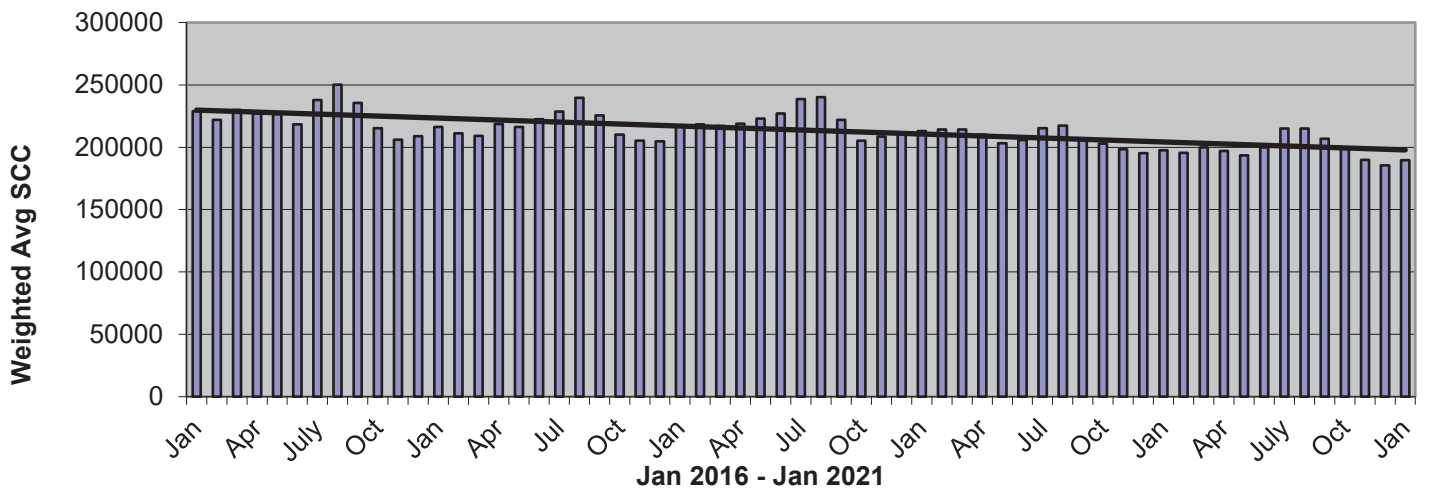
Call now for information at absolutely no obligation to you

1-877-488-4699 or email CLIENTS@ATLANTICJOBS.NET

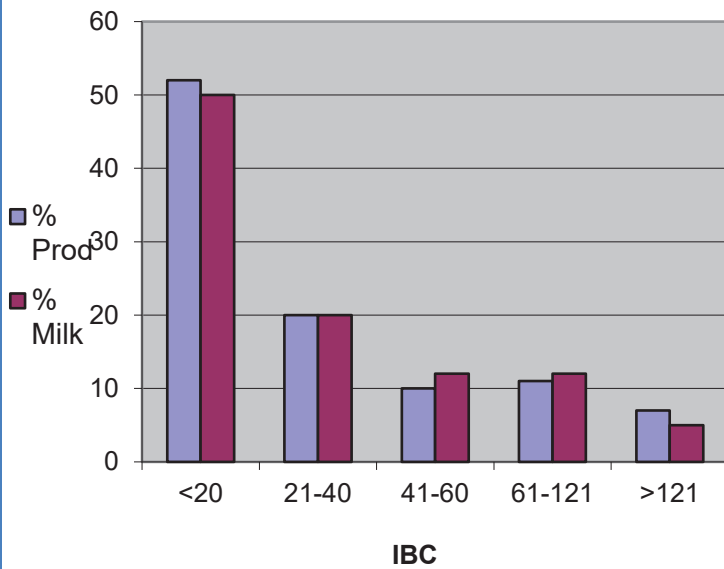
Monthly Weighted Average IBC



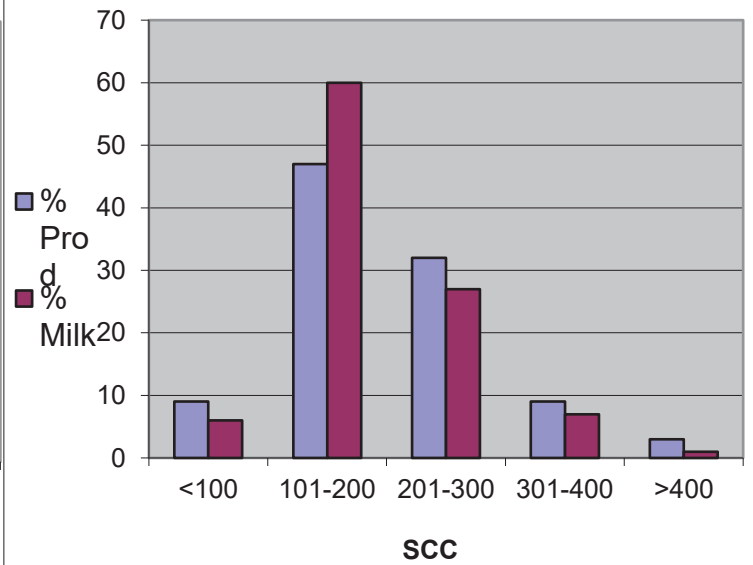
Monthly Weighted Average SCC



Jan 2021



Jan 2021





JANUARY Quality Bonus

To get the quality bonus producers must have:

Monthly Average:

IBC - \leq 30,000/ ml

SCC- \leq 250,000/ml

FpT- lower than -0.525° Hortvet

No positive inhibitors

*represent # of months the quality bonus has been received

BAILDON HUTT BRET*	HUTT BRET QUILL LAKE*
HUT BRET CHURCH OF BEECHY*	LEYENHORST, A & H*
BEST-O-WEST-O DAIRY*	VANZESSEN DAIRY INC*
BROYHILL HOLSTEINS*	NEW GENERATION HOLSTEINS*
NEUVIEW DAIRIES INC*	HUTT BRET CHURCH OF RIVERVIEW *
CARONCREST FARMS LTD*	ROBELLA HOLSTEINS*
CRAILA DAIRY LTD*	JIMLEE FARMS LTD*
BENBIE HOLSTEINS LTD*	E.S.B. HOLDINGS LTD*
LOVHOLM HOLSTEINS*	SAND LAKE HUTT BRET*
DOWNIE LAKE COLONY*	SCHAEFFER, RONALD*
EATONIA HUTT BRETH*	101115806 SASK LTD*
BRUINSDALE FARMS LTD*	DARIAN FARMS LTD*
ENNS FARMS LTD*	SIMMIE HUTT BRET*
W.C.C. DAIRIES CORP*	SMILEY HUTT BRET*
FEHR'S RIVERFRONT FARM*	BALGONIE HOLSTEINS LTD*
FOTH VENTURES LTD*	DALVOORDE DAIRIES LTD*
KENBERT ACRES*	VANGUARD HUTT BRET*
BERKHOUT, SIMON & ARJA*	WALDECK HUTT BRET*
GLIDDEN HUTTERIAN BRETHREN*	Q VALLEY FARM LTD*
RIVER VALLEY HOLSTEINS LTD*	WALLYWAY FARMS LTD*
FOX VALLEY FARMING CO*	BLU J FARMS*
HODGEVILLE COLONY*	HIGHDALE FARMS LTD*
HUTT BRETH SPRING CREEK*	WILLOW PARK COLONY*
HUTT BRET SWIFT CURRENT*	EAGLEWOOD HOLDINGS LTD*
HUTT BRET LAJORD*	K & K THONER DAIRY LTD*
HUTT BRET DINSMORE*	KIELSTRA HOLSTEINS INC*
ROSETOWN FARMING CO*	SPRING LAKE COLONY*
HUTT BRET WEST BENCH*	BUTTE COLONY*
J & J BOOT DAIRY LTD*	BRAMVILLE JERSEYS*
SEPT SUN ACRES LTD*	HIDDEN VALLEY DAIRIES LTD*
KENSTAL FARMS INC*	EARVIEW COLONY*
KESSEL FAMILY FARM*	SUNNYSIDE DAIRY*
ELKREST FARMS LTD*	PLUM BLOSSOM FARM LTD.(SASK)*
J-C LAND & LIVESTOCK LTD*	HYLJON HOLSTEINS LTD*
DIAMOND HOLSTEINS LTD*	HUTT BRET PENNANT INC*
KNITTIG FARMS LTD*	WESTWIKK FARMS*
ARTLAND DAIRIES INC*	HUTT BRET SOUTHLAND*
LAKEVIEW COLONY*	SIERRA HUT BRETH*
HAVERLAND DAIRY LTD*	HIDDEN HILL DAIRY*
MAIN CENTRE DAIRY FARM*	MATOADOR HUTT BRETH*
DAUM DAIRIES*	RICHARD VAN DONGEN*
MIL-EN-ROY FARMS (1981) LTD*	LAKEVIEW HOLSTEINS LTD*
LAZY DAY FARMS*	RYDALL LIVESTOCK LTD*
STAR VALLEY FARM PART*	BOESE, AREDEL & LENORA*

QUOTA LISTING or CLASSIFIED AD SERVICE

SaskMilk offers a free quota listing service as part of its Newsletter. Anyone wishing to sell or purchase quota, cows or miscellaneous dairy equipment is welcome to contact the SaskMilk office at (306) 949-6999. All prices and negotiations will be independent of SaskMilk. **Please note that ads will be posted in two issues and will then be removed unless SaskMilk is notified otherwise.**

Fresh and springing heifers for sale.
Greenbelt Dairy
Paul Rajotte
780-806-9296

Reminder!

The deadline date for Quota Transfer, Quota Exchange, and 10% Transfer Limit Exemptions is the 6th of each month

Your Quota Transfer, and 10% Exemption Applications must be received on or before the 6th of the month in order to be effective the 1st of the following month

Quota Exchange forms must be received in the SaskMilk office on or before the 6th of the month for that month's Exchange

BOARD OF DIRECTORS

Matthew Flaman – Chair
(306) 537-9634
flamanmj@gmail.com

Albert Leyenhorst – Vice-Chair
(306) 230-0154
albertleyenhorst@gmail.com

Gordon Ell – Second Vice-Chair
(306) 535-1922
gt.ell@sasktel.net

Brian Lindenbach
(306) 591-0315
broyhill192@gmail.com

Jessica Lovich
(306) 201-7362
j_simanton@hotmail.com

Tom MacKenzie
(306) 352-2292
tommymilk@icloud.com

Blaine McLeod
(306) 631-8053
rb.mcleod@sasktel.net

Anthony Nienhuis
(306) 221-1598
nienhuisanthony@gmail.com

Leonard Wipf
(306) 491-0432
leonard.countryclover@gmail.com

For further information, please contact the SaskMilk office.
444 McLeod Street
Regina, Saskatchewan S4N 4Y1
Telephone: (306) 949-6999
Fax: (306) 949-2605
Website: www.saskmilk.ca