

In this Issue:

AGM Sponsors	2
Dairy Info Day.....	3
Quota Exchange	6
Production	9
Code of Practice.....	11
SCC/IBC.....	13
Classifieds	15
Directors	15

Industry Update

SaskMilk Annual General Meeting

Thank you to all producers and industry partners who attended the virtual SaskMilk AGM on November 24th, 2020. We would like to thank our guests for attending the meeting and extend thanks to our sponsors (found on page 2) who continue to support SaskMilk events.

CETA & CPTPP Compensation

Compensation for industry losses through CETA & CPTPP have been announced. This compensation will be paid out in three years (which is an accelerated pace) as follows:

- Year 1 direct payment to dairy farmers of \$468 million, to be paid by March 31, 2021 (using a similar payment mechanism as the previous payment you received);
- Year 2 payment of \$469 million; and
- Year 3 payment of \$468 million.

Further details regarding payment (timing, instructions, etc.) will be sent to producers when available. Compensation for the Canada-United States-Mexico Agreement (CUSMA) has not been announced, and producers will be kept updated on any developments on that file.

SASKMILK HOLIDAY OFFICE HOURS

Thursday, December 24 th	8:00 a.m. to 12:30 p.m.
Friday, December 25 th	Office closed
Monday, December 28 th	Office closed
Tuesday, December 29 th	Office closed
Wednesday, December 30 th	Office closed
Thursday, December 31 st	Office closed
Friday, January 1 st	Office closed

2020 SaskMilk AGM

November 24, 2020

THANK YOU TO OUR SPONSORS!

GOLD SPONSORS



SILVER SPONSOR



Save the Date

Tenth Annual Dairy Info Day (VIRTUAL MEETING)

Thursday, January 21, 2021 on Zoom

9:00 Welcome and opening comments by Chair of the SaskMilk Board (Matthew Flaman), and Head of the Department of Animal and Poultry Science (Bob Tyler)

Dairy Advisory Board and Rayner Dairy Research and Teaching Facility

9:15 Report from Dairy Advisory Board

9:30 Report on operations of the Rayner Research and Teaching Facility – Jay Olyniuk, Facility Manager

Presentations

9:50 Producer Panel Presentations –Producer perspectives on cow comfort

Speakers:

Jay Olyniuk, Facility Manager (Rayner Research and Teaching Facility, Saskatoon)

Merlis Wiebe, Dairy producer (Marfay Farms, Osler)

Guest Speaker- Dr. Nigel Cook, University of Wisconsin

10:50 Producer panel for discussion and questions (LIVE)

11:20 Update on NSERC calf research (specific title to be provided) – Anne Laarman, Department of Agriculture, Food and Nutritional Science, University of Alberta

11:35 Comparison of bedded mattresses to deep-bedded stalls with shavings- Tara Sweetnam, University of Saskatchewan Undergraduate Student

11:45 A novel therapeutic treatment for mastitis - Meena Sakharkar and Jian Yang, College of Pharmacy and Nutrition, University of Saskatchewan

11:55 Impact of processing methods of prairie oats in comparison with barley grain on milk production in dairy cows - Maria E. Rodriguez-Espinosa, University of Saskatchewan PhD Student

12:05 Closing remarks

To register, contact info@saskmilk.ca by **Monday, January 18.**

SaskMilk in the Community

SaskMilk was happy to support the first annual “Trick or Treat” with REAL in Regina this Halloween!

Chocolate Milk 2 Go was handed out to the 2000 little ones that attended.



Did You Know?

TRANSFER CREDIT BULLETIN

A producer must have the “Transfer Credit Designation” to add a listing to the transfer credit bulletin

1. (Users with full site permissions) Go to the Contacts screen and click the pencil beside ‘Transfer Credit Designation’
2. Select the appropriate contact(s) and click save

Who Should I Call?

Who at the SaskMilk office should producers call? Here's a handy guide!

<i>For...</i>	<i>Call...</i>	<i>At...</i>
<ul style="list-style-type: none"> ➤ Sponsorship Requests ➤ Donation Requests ➤ Dairyanna's Costume and Events ➤ School Milk Program ➤ Nutrition Resource Ordering 	Anita Medl	306-721-9483
<ul style="list-style-type: none"> ➤ Quota Exchange and Private Quota Transfers ➤ Leases ➤ Transfer Credits ➤ Security Applications ➤ Projections for production ➤ Name Changes ➤ Designation of Signing Authority ➤ Monthly production numbers for producers 	Bev Solie	306-721-9488
<ul style="list-style-type: none"> ➤ School Milk Program ➤ Marketing Activities 	Chelsea Wilcoxon	306-527-0753
<ul style="list-style-type: none"> ➤ Producer statements ➤ Banking info for direct deposit of milk pay ➤ Milk pick-up issues –variances in volumes, planning to quit shipping, etc. 	Darlene Weighill	306-721-9491
<ul style="list-style-type: none"> ➤ On Farm- licensing, facilities, equipment, driveways, yards, animal care ➤ Lab testing results ➤ Bulk truck drivers- licensing, complaints/issues ➤ Bulk tank calibrations ➤ Pro Action- Food Safety (CQM), Animal Care, Traceability, Biosecurity, Environment 	Deb Haupstein	306-721-9486
<ul style="list-style-type: none"> ➤ Monthly milk prices paid to producers ➤ Provincial & National production updates 	Doug Miller	306-721-9485
<ul style="list-style-type: none"> ➤ Rayner Dairy Centre & Research ➤ Extension services 	Emily Morabito	306-966-6015
<ul style="list-style-type: none"> ➤ SaskMilk Portal Assistance 	Jenn Buehler	306-721-9492
<ul style="list-style-type: none"> ➤ Media or news stories <i>or</i> if you have been contacted by any media agency or reporter ➤ Trade agreements, international trade updates ➤ DEAP policy/program enquiries ➤ Research enquiries or proposals 	Joy Smith	306-721-9482
<ul style="list-style-type: none"> ➤ Social media enquiries (Twitter, Instagram, Facebook) ➤ Website enquiries ➤ Newsletter advertising ➤ Dairy Conference 	Julie Ell	306-721-9493

QUOTA EXCHANGE

The market-clearing price established for the December 2020 Quota Exchange was **\$36,500.00**.

The next Quota Exchange will be held on **January 15, 2020**. All offers to sell and bids to purchase quota through the Quota Exchange must be submitted by midnight, **January 6, 2020**. SaskMilk recommends that offers and bids be submitted well in advance of the deadline date to ensure adequate time for corrections, if necessary.

When making bids on the Quota Exchange, the price on offers to sell quota is the minimum price that the producer is prepared to accept for that quota. Only if the market-clearing price is equal to or greater than the producer's minimum price will that producer qualify for participation in the Exchange. Conversely, the price on offers to purchase quota is the maximum price that the producer is prepared to pay for that quota. Only if the market-clearing price is equal to or less than the producer's maximum price will that producer qualify for participation in the Exchange. The clearing price is set at the price where the smallest difference exists between the accumulated volume offered for sale and the accumulated volume bid to purchase. The results of the Quota Exchange are outlined in the following Table.

DECEMBER 2020 QUOTA EXCHANGE RESULTS

Market Clearing Price per kilogram of butterfat	\$ 36,500.00
Daily Kilograms offered to Purchase	47.00
Kilograms offered to Sell	21.00
Kilograms sold	21.00
Number of Producers	
- offered to purchase	5
- purchased quota	2
- offered to sell	1
- sold quota	1

DECEMBER 2020 QUOTA EXCHANGE CLEARING PRICE RESULTS

Price (\$/daily kg b.f.)	No. of Sellers	Cumulative Sellers	Daily Kgs b.f. offered for sale	Cumulative sales	Cumulative Sales less Cumulative purchases	Cumulative purchases	Daily Kgs b.f. offered to purchase	Cumulative bidders	No. of buyers
\$34,600.00	0	0	0.00	0.00	-47.00	47.00	8.00	5	1
\$35,000.00	1	1	21.00	21.00	-18.00	39.00	0.00	4	0
\$35,600.00	0	1	0.00	21.00	-18.00	39.00	8.00	4	1
\$36,000.00	0	1	0.00	21.00	-10.00	31.00	10.00	3	1
\$36,500.00	0	1	0.00	21.00	0.00	21.00	13.00	2	1
\$36,600.00	0	1	0.00	21.00	13.00	8.00	8.00	1	1

* Please contact Bev Solie at 306-949-6999 for inquiries dealing with quota management sheets, the Quota Exchange, for transfer credits, or with any other quota transactions.



TRANSFER CREDIT SUMMARY REPORT

MONTH	# OF PRODUCERS TRANSFER IN	# OF PRODUCERS TRANSFER OUT	TOTAL KGS BUTTERFAT
November, 2019	32	32	23,235
December	26	26	15,625
January, 2020	27	27	18,191
February	26	26	14,525
March	17	17	7,531
April	10	10	6,670
May	6	6	3,000
June	8	8	8,328
July	11	11	13,384
August	11	11	6,964
September	30	30	22,918
October	19	19	13,812
November	15	15	8,120

PRIVATE TRANSFERS PROCESSED

MONTH	DAILY KILOGRAMS
Nov, 2019	34.80
December	122.55
January, 2020	60.00
February	0.00
March	0.00
April	232.64
May	49.00
June	164.00
July	410.00
August	199.00
September	1,146.31
October	10.00
November	96.88

OVER QUOTA (OVER 5 DAYS)

REPORT BY MONTH

MONTH	# OF PRODUCERS	KGS BUTTERFAT
Nov, 2019	3	291
December	6	1,257
January, 2020	8	1,275
February	7	1,360
March	11	1,008
April	7	1,286
May	4	764
June	3	190
July	5	216
August	3	34
September	2	202
October	2	174
November	2	142

SUMMARY REPORT OF CREDITS NOVEMBER 2020 – 157 PRODUCERS

DAYS	# OF PRODUCERS	POSITIVE CREDITS ACCUMULATED (KGS OF BUTTERFAT)
+ 5	5	1,586
0 to + 5	23	6,985
TOTAL	28	8,571
DAYS	# OF PRODUCERS	NEGATIVE CREDITS ACCUMULATED (KGS OF BUTTERFAT)
-15	3	4,491
-10 to -15	44	103,872
-5 to -10	39	71,570
0 to -5	43	24,270
TOTAL	129	204,203

LOST OPPORTUNITY REPORT

MONTH	# OF PRODUCERS	LOST OPPORTUNITY (KGS OF BUTTERFAT)
November, 2019	5	1,253
December, 2019	5	1,026
January, 2020	3	1,374
February, 2020	3	1,183
March, 2020	1	648
April, 2020	4	1,416
May, 2020	9	2,479
June, 2020	8	3,531
July, 2020	10	3,572
August, 2020	8	2,022
September, 2020	6	617
October, 2020	3	491
November, 2020	3	255

WEIGHTED AVERAGE COMPONENT TESTS & PRICES NOVEMBER 2020

Components	Average Test	Price per kilogram Class 1 to 5
Butterfat	4.3506	16.687803
Protein	3.3200	2.572667
Other Solids	5.8657	0.728074

The average butterfat price received per kilogram was \$19.63.

SASKATCHEWAN MILK POOL RESULTS NOVEMBER 2020

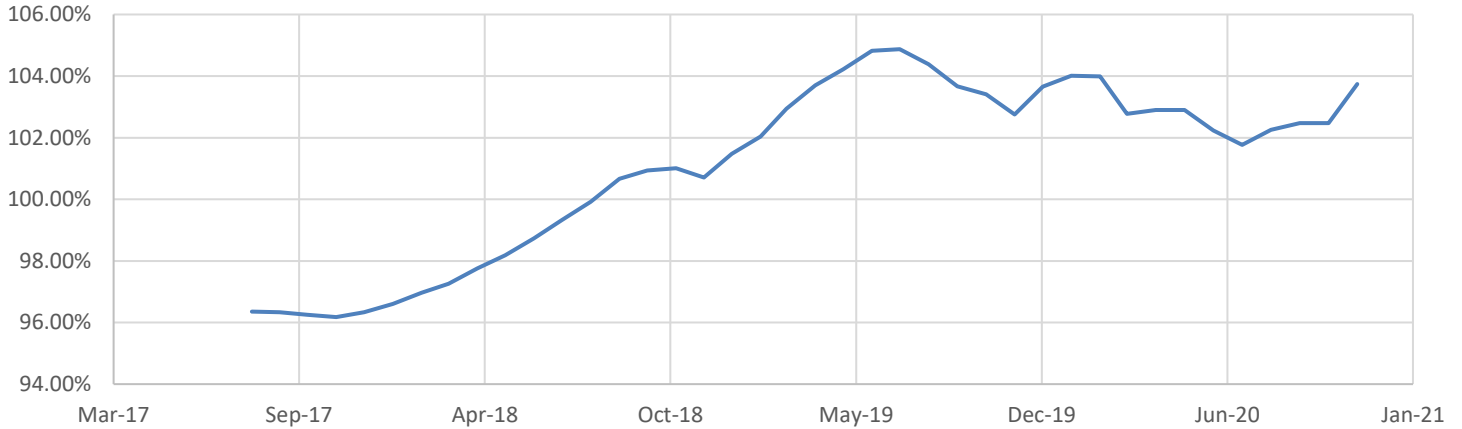
Milk Sale Revenue	\$20,920,856.87
WMP Revenue/<Expense>	<\$89,591.01>
Total Revenue	\$20,831,265.86

In November, Saskatchewan had a monthly CDC allocation of **1,009,743 kilograms** of butterfat. In the month of November, Saskatchewan production was **25,257 kgs** of butterfat **over** and cumulatively **over** by **587,036 kgs** of butterfat. On a percentage basis, Saskatchewan is **4.89% above** our CDC allocation flexibility limits based on the Continuous Quota model. The -2.00% lower flexibility limit is in effect.

	(1) Monthly Total Production Kgs bf	(2) Total Monthly CDC Quota Allocation Kgs bf	(3) Monthly Over or (Under) Production Kgs bf col. 1 – 2 = 3	(4) Lower Flexibility Limit -2.00% Kgs bf col. 8 * -1.5%	(5) Upper Flexibility Limit 1.25% Kgs bf col. 8 *1.0%	(6) Cumulative Over or (Under) Production with limits Kgs bf	(7) Cumulative Over or (Under) Production with limits (%) col. 6 / 8	(8) Rolling 12 Month Total Quota Kgs bf
Nov-19	1,047,766	1,085,754	(37,988)	-242,752	151,720	91,402	1.56%	12,137,583
Dec-19	1,088,248	1,063,255	24,993	-242,958	151,849	214,717	1.77%	12,147,887
Jan-20	1,095,413	920,697	174,716	-242,944	151,840	389,433	3.21%	12,147,191
Feb-20	1,001,524	899,946	101,578	-243,932	152,458	491,011	4.03%	12,196,610
Mar-20	1,055,461	1,073,511	(18,050)	-245,108	153,192	472,961	3.86%	12,255,382
Apr-20	970,693	865,580	105,113	-241,673	151,046	578,074	4.78%	12,083,667
May-20	1,020,648	947,006	73,642	-241,096	150,685	651,716	5.41%	12,054,823
Jun-20	990,904	989,664	1,240	-242,452	151,533	652,956	5.39%	12,122,607
Jul-20	1,023,353	1,044,803	(21,450)	-243,564	152,228	631,506	5.19%	12,178,203
Aug-20	1,023,170	1,005,440	17,730	-242,210	151,382	643,715	5.28%	12,110,521
Sep-20	1,022,765	1,040,287	(17,522)	-241,699	151,062	622,175	5.15%	12,084,970
Oct-20	1,089,543	1,149,939	(60,396)	-241,828	151,143	561,779	4.65%	12,091,404
Nov-20	1,035,000	1,009,743	25,257	-240,308	150,192	587,036	4.89%	12,015,393

- (1) Monthly Production in Saskatchewan
- (2) Total Monthly Quota = Class 1 sales + Monthly MSQ + Carry Forward
- (3) Difference between the monthly production (1) and the total monthly quota (2)
- (4) The Lower Flexibility Limit is -2.00% of Rolling 12 Month Total Quota (9)
- (5) The Upper Flexibility Limit is 1.25% of Rolling 12 Month Total Quota (9)
- (6) Previous Month Cumulative Over or (Under) Production + Current Monthly Over or (Under) Production (capped at lower or upper limit if applicable)
- (7) Equal to Column (6) expressed as a percentage basis within the flexibility limits
- (8) Total Monthly CDC Quota Allocation for the previous 12 months

SK Milk Production SK Position



INHIBITOR TEST STATIONS

SaskMilk has established a number of inhibitor test stations around the province. Producers needing to check their bulk tanks for inhibitors can take a sample to the test station closest to their location.

The test stations have the Charm Trio test strips available for testing. The Charm Trio test is the test that the plant uses. It tests for the following drugs:

Beta-lactam Drug	Detection Level† (ppb*)	US Safe Level or Tolerance / Canadian MRL (ppb*)	Sulfa Drug	Detection Level† (ppb*)	US Safe Level or Tolerance / Canadian MRL (ppb*)
Amoxicillin	3.1	10 / None	Sulfadimethoxine	4.7	10 / 10 [∞]
Ampicillin	7.7	10 / 10	Sulfamethazine	7.7	10 / 10 [∞]
Ceftiofur and Metabolites [^]	53	100 / 100	Tetracycline Drug	Detection Level† (ppb*)	US Safe Level/Tolerance / Canadian MRL (ppb*)
Cephapirin	14	20 / 20	Chlortetracycline	54	300 / 100
Cloxacillin	7.4	10 / None	Oxytetracycline	66	300 / 100
Penicillin G	2.2	5 / 6 ^{&}	Tetracycline	21	300 / 100

† Positive at least 90% of the time with 95% confidence.

* parts per billion or ng/mL

[^] Ceftiofur parent drug sensitivity is approximately 1/2 that reported in the table.

[&] Canadian MRL for penicillin G is 0.01 IU/ml, equivalent to 6 ppb.

[∞] Canadian MRL for sulfa drugs are singly or in combination with other MRL listed sulfonamides.

Test stations are located at the following locations:

1. Swift Current, SK - Agrifoods truck bay - 675 Cheadle Street West Office 306-773-1097 or Rodger Ruf 306-741-3261
2. Star City, SK - Star City Colony - Reuben Tschetter 306-921-9381
3. Grenfell, SK - Jim Ross 306-697-2232
4. Yorkton, SK - Ford Dairy Farms Inc. - Bud and Margaret Ford 306-782-7240
5. Saskatoon, SK – Agrifoods Truck Bay - east of the Saputo plant receiving bay
lead hand – Mike V. or Mike K. 306-664-0202 after hours: 306-668-8135

Charm tests strips and Charm testers are now available for purchase through SaskMilk. Agrifoods is now carrying SNAP test kits for tetracyclines as well as beta lactams. For further information you can contact: Deb Haupstein 306-721-9486

Code of Practice

5.1 Pre-Transport Decision Making (77,78)

It is the responsibility of the party that is shipping (or causing to be loaded) the animals to ensure that all animals are fit for the intended journey. For that reason, those responsible for arranging transportation services need to know how long the animals will be expected to be in transit, including intermediate stops, such as auction markets, and whether the transporter needs to provide additional services (e.g. - feed, water, rest, milking, etc.) during transit. If in doubt, assume the longest trip when assessing the trip.

DAIRY FARM WORKERS

AVAILABLE IMMEDIATELY!



- **DAIRY, HOG & POULTRY WORKERS**
- **TRUCK DRIVERS, COMBINE OPERATORS**
- **GENERAL LABOR & MANY MORE.**

ATLANTIC JOB'S provides you with :

- **Very experienced dairy farm workers**
- **Workers providing permanent long term commitment to you**



Atlantic

JOBS Ltd.

Specializing In Skilled Jobs Placement

We will make your hiring process easy and stress free by securing the best workers available that have the experience, skills, qualifications and language requirements to help your business prosper.

ATLANTIC JOBS has partnered with farmers for many years to provide excellent results.

Call now for information at absolutely no obligation to you

1-877-488-4699 or email CLIENTS@ATLANTICJOBS.NET

Did You Grow Perennial Silage in 2020?

As part of the Dairy Research Cluster 3, Dairy Farmers of Canada and AAFC have funded a nation-wide study looking at silage production and management factors and linking them to silage quality. The goal of this study is to develop best management practices (BMP) for silage production based on geographical region and silage system. This is part of an interprovincial effort to improve the sustainability of the Canadian dairy industry by providing producers with evidence-based information on silage BMP's and therefore reduce production costs.

Eligible to Participate?

We need producers who...

- Grew perennial (alfalfa, grass, or grass/alfalfa mix) silage in 2020; and
- Stored their first cut silage in a bunker, drive over pile, vertical silo, or as wrapped bales.

Two Ways to Participate

1. Visit the link below to participate in the online survey. It only takes a few minutes and includes questions related to general farm characteristics, silage management and the storage of your 2020 first cut perennial silage. We can provide you with a paper copy of the survey and a self-addressed envelope to return the survey to us also. To receive these, please contact Carla by phone or email (see below).

Survey Link: <https://www.surveymonkey.com/r/2020CDNSilageStudy>

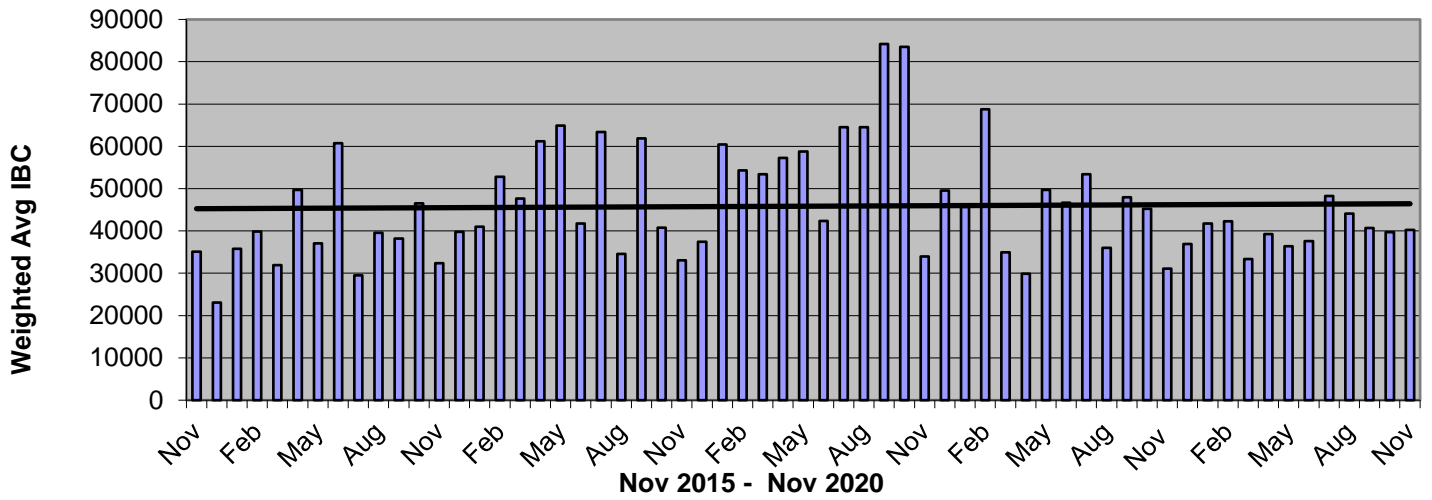
or

2. Arrange a farm visit for collection of a 1 kg silage sample and a short survey (can be by phone or email). Silage quality results including *in vitro* dry matter digestibility will be returned to you.

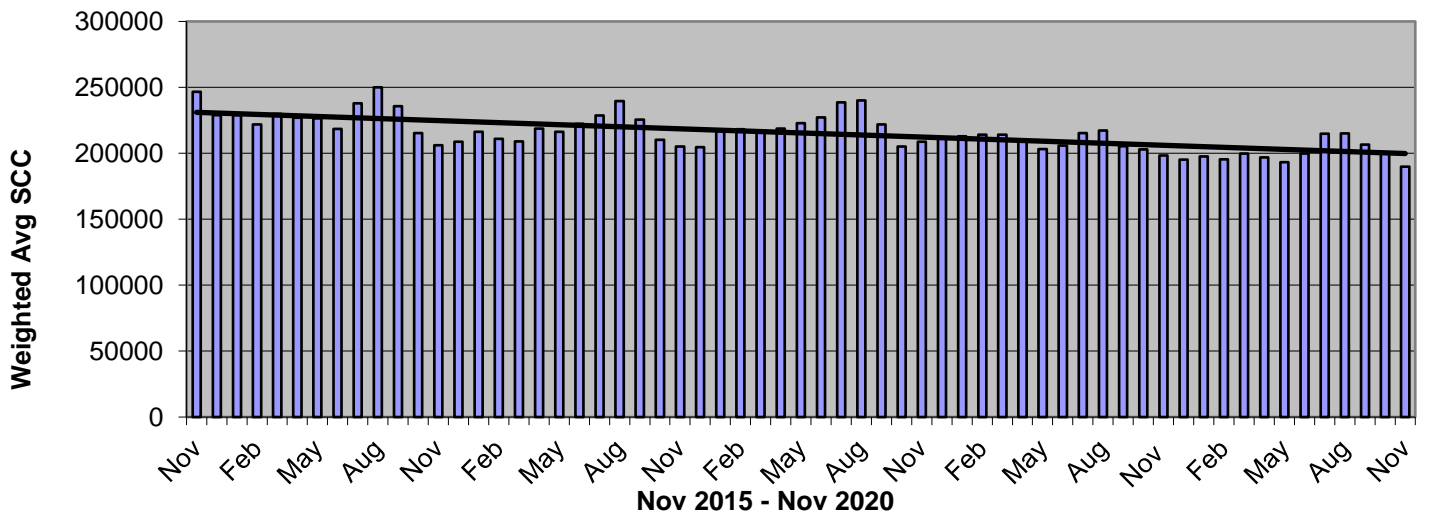
For more information on the study and how you can participate please contact:

Carla Plett M.Sc. Student, Dairy Science Department of Animal Science University of Manitoba Email: plettc35@myumanitoba.ca Cell: 1-204-371-5272
--

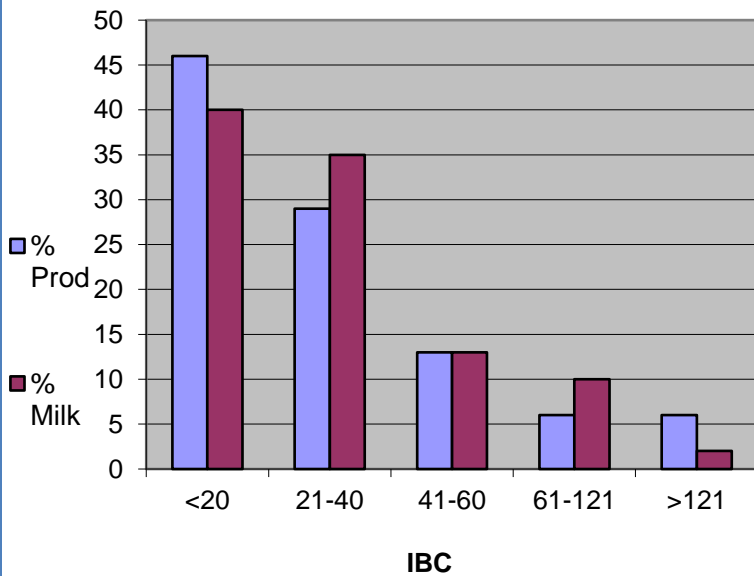
Monthly Weighted Average IBC



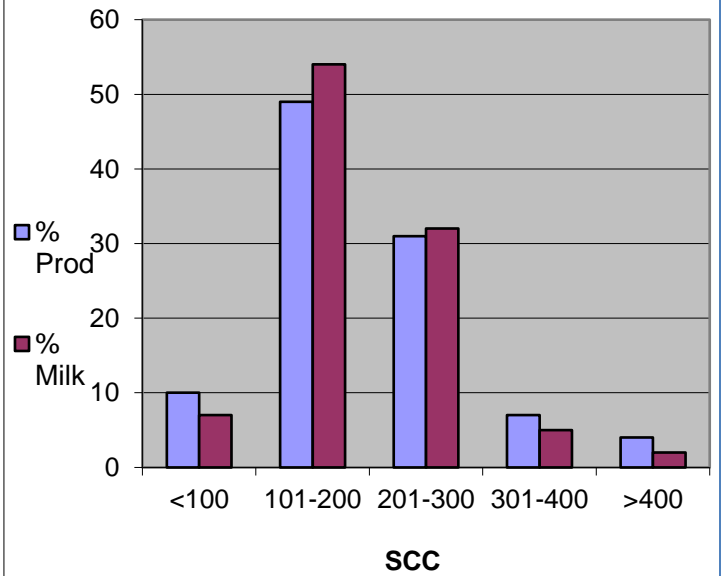
Monthly Weighted Average SCC



Nov 2020



Nov 2020





November Quality Bonus

To get the quality bonus
producers must have:

Monthly Average:

IBC - <= 30,000/ ml

SCC- <= 250,000/ml

FPT- lower than -

0.525°Hortvet

No positive inhibitors

*represent # of months the
quality bonus has been
received

HUTT BRETH BEECHY*****	HUTT BRET RIVERVIEW*****
CHRIS-ADIE HOLSTEINS*****	ROBELLA HOLSTEINS*****
BROYHILL HOLSTEINS***	JIMLEE FARMS LTD*****
CARONCREST FARMS LTD*****	E.S.B. HOLDINGS LTD*****
CLEAR SPRING COLONY*****	SAND LAKE HUTT BRET*****
CRAILA DAIRY LTD*****	SCHAEFFER, RONALD J****
BENBIE HOLSTEINS LTD*****	101115806 SASK LTD*****
LOVHOLM HOLSTEINS*****	DARIAN FARMS LTD*****
DOWNIE LAKE COLONY*****	SIMMIE HUTT BRET*****
EATONIA HUTT BRETH*****	HUTT BRET STAR CITY INC****
ELL'S DAIRY FARM 2010 INC*****	BALGONIE HOLSTEINS LTD*****
ENNS FARMS LTD*****	DALVOORDE DAIRIES LTD*****
W.C.C. DAIRIES CORP*****	UNIV OF SASK*****
FEHR'S RIVERFRONT FARM*****	VANGUARD HUTT BRET*****
FOTH VENTURES LTD*****	DALKIM HOLSTEINS LTD*****
KENBERT ACRES*****	Q VALLEY FARM LTD*****
BERKHOUT, SIMON & ARJA*****	WALLYWAY FARMS LTD*****
RIVER VALLEY HOLSTEINS LTD.	BLU J FARMS*****
FOX VALLEY FARMING CO*****	LOUAC HOLSTEINS INC*****
HUTT BRETH ARM RIVER*****	GREENDALE DAIRY*
HUTT BRETH PONTEIX*****	HIGHDALE FARMS LTD*****
HUTT BRETH SPRING CREEK*****	WILLOW PARK COLONY*****
HUTT BRET SWIFT CURRENT*****	EAGLEWOOD HOLDINGS LTD***
HUTT BRET GOLDEN VIEW*****	K & K THONER DAIRY LTD*****
HUTT BRET KYLE*****	KIELSTRA HOLSTEINS INC*****
HUTT BRET LAJORD****	SPRING LAKE COLONY*****
HUTT BRET DINSMORE*****	BUTTE COLONY*****
ROSETOWN FARMING CO***	BRAMVILLE JERSEYS*****
HUTT BRET WEST BENCH*****	SCOTT COLONY*****
HUTT BRET SPRINGWATER***	EARVIEW COLONY*****
SEPTEMBER SUN ACRES LTD*****	SUNNYSIDE DAIRY*****
KENSTAL FARMS INC*****	PLUM BLOSSOM FARM LTD.(SASK)****
KESSEL FAMILY FARM*****	HYLJON HOLSTEINS LTD*****
ELKREST FARMS LTD*****	HUTT BRET PENNANT INC*****
J-C LAND & LIVESTOCK LTD*****	WESTWIKK FARMS*****
DIAMOND HOLSTEINS LTD****	GRASSY HILL COLONY*****
KNITTIG FARMS LTD*****	HUTT BRET SOUTHLAND*****
ARTLAND DAIRIES INC*****	SIERRA HUTT BRET*****
HAVERLAND DAIRY LTD***	CORNELIUS & TRACY WIEBE**
CARMICHAEL HUTT COLONY*****	MATADOR HUTT BRET**
LOEWEN DARCY & ROSALIE*	ADIT FARMS INC*****
MAIN CENTRE DAIRY FARM*****	KEN & KAREN GIESBRECHT*****
DAUM DAIRIES*****	BERG DAIRIES*****
STAR VALLEY FARM PART*****	RICHARD VAN DONGEN***
HUTT BRET QUILL LAKE*****	LAKEVIEW HOLSTEINS LTD*****
LEYENHORST, A & H*****	RYDALL LIVESTOCK LTD*****
VANZESSEN DAIRY INC*****	ARDEL & LENORA BOESE*****
RIBSTONE HUTT COLONY*****	

QUOTA LISTING or CLASSIFIED AD SERVICE

SaskMilk offers a free quota listing service as part of its Newsletter. Anyone wishing to sell or purchase quota, cows or miscellaneous dairy equipment is welcome to contact the SaskMilk office at (306) 949-6999. All prices and negotiations will be independent of SaskMilk. **Please note that ads will be posted in two issues and will then be removed unless SaskMilk is notified otherwise.**

Reminder!

The deadline date for Quota Transfer, Quota Exchange, and 10% Transfer Limit Exemptions is the 6th of each month

Your Quota Transfer, and 10% Exemption Applications must be received on or before the 6th of the month in order to be effective the 1st of the following month

Quota Exchange forms must be received in the SaskMilk office on or before the 6th of the month for that month's Exchange

BOARD OF DIRECTORS

Matthew Flaman – Chair
(306) 537-9634
flamanmj@gmail.com

Albert Leyenhorst – Vice-Chair
(306) 230-0154
albertleyenhorst@gmail.com

Gordon Ell
(306) 535-1922
gt.ell@sasktel.net

Brian Lindenbach
(306) 591-0315
broyhill192@gmail.com

Jessica Lovich
(306) 201-7362
j_simanton@hotmail.com

Tom MacKenzie
(306) 352-2292
tommymilk@icloud.com

Blaine McLeod
(306) 631-8053
rb.mcleod@sasktel.net

Anthony Nienhuis
(306) 221-1598
nienhuisanthony@gmail.com

Leonard Wipf
(306) 491-0432
leonard.countryclover@gmail.com

For further information, please contact the SaskMilk office.

444 McLeod Street
Regina, Saskatchewan S4N 4Y1
Telephone: (306) 949-6999
Fax: (306) 949-2605
Website: www.saskmilk.ca