

### In this Issue:

Did You Know? .....	3
WCDS 2021.....	4
Quota Exchange .....	7
Production .....	10
Code of Practice .....	12
SCC/IBC.....	14
Classifieds .....	15
Directors.....	15



## 11<sup>th</sup> SaskMilk Annual General Meeting

It is that time of year again! The SaskMilk Annual General Meeting is scheduled for November 24<sup>th</sup> at 9:00 a.m. While our meeting may be virtual this year, we are looking forward to connecting with producers and industry guests to discuss this past dairy year and look forward to the future.

**To register for the AGM, please visit:**

<https://agm.conveneagm.com/saskmilkagm2020>.

If you have any questions about the Annual General Meeting or registration please call the SaskMilk office at (306) 949-6999 or email [info@saskmilk.ca](mailto:info@saskmilk.ca). Dial in details for the meeting are available.

Registration for the AGM closes on November 22<sup>nd</sup>, 2020!

## 2020 Fall Producer Meetings

Thank you to all producers who attended the virtual Fall Producer Meetings at the end of October! While the meetings looked different this year due to Covid-19, it was a great opportunity to connect with producers regarding current events in the industry.

Presentations for the meetings are posted on the SaskMilk Producer Portal and will remain posted for your review. If you did not attend producer meetings, we encourage you to watch the presentations and contact your board members or the SaskMilk office if you have any questions.



## Pump up your profits

Improve the profitability of your robotic milking herd by working with our agri-advisors.

When it comes to robotic milking, success is in the details. Improve your performance, efficiency and profitability with personalized advice from our experts. As every farm is unique, we understand that the key to better profitability is a tailor-made solution adapted to your reality.

**Go to [sollio.ag/contact](https://sollio.ag/contact) for a personalized simulation.**

19548

™ Sollio Agriculture is a trademark of Sollio Cooperative Group, used under license.

**Alison Friesen, M.S.**  
Ruminant Nutritionist  
[alison.friesen@sollio.ag](mailto:alison.friesen@sollio.ag)  
506-871-0600

**Dean Moore, Sales Consultant**  
Livestock Production  
[dean.moore@sollio.ag](mailto:dean.moore@sollio.ag)  
204-612-5808

**Albert Janzen, Sales Consultant**  
Livestock Production  
[albert.janzen@sollio.ag](mailto:albert.janzen@sollio.ag)  
306-774-5695



## *Did You Know?*

### UNLOCKING YOUR PORTAL ACCOUNT

If you should find yourself locked out of your portal account simply reset your password. See instructions below:

1. From the log in page, click “Forgot your password?”

**Saskmilk**

**Sign in**  
Enter your user name and password to access your portal account.

User Name / Producer No

Password [Forgot your password?](#)

Remember me?

[Log In](#)

2. Type in your Username
3. Click “Reset password”
4. Check your Inbox (and junk mail folder) for the reset password email
5. Open email and click the link (this will launch your web browser)



Please reset your password by clicking [here](#)

6. Type in your username
7. Type in a password and confirm the password (your original password can be used)
8. Click “Reset Password”
9. If done correctly you should see “Your password has been updated. Please [click here to log in](#)”
10. Click link and log in as normal using your username and password



# Western Canadian Dairy Seminar

March 8 – 12, 2021

## Virtual. Dairy. Reality.

All times are in MST

Spread out over 5 days (2-3 hours a day), the virtual (online) version of WCDS 2021 gives you the opportunity to hear from speakers presenting on a range of topics, including calf health, nutrition, and reproduction and genetics.

There will be virtual tours of 3 progressive dairy operations, a student research presentation competition and, the always popular, producer panel.

In addition to the formal program, there will be chance to reconnect with our industry sponsors in the virtual display booth area and discuss the latest dairy-related research findings with students in the research poster display area.

Something unexpected comes up one morning and you're not able to tune in? Don't worry; the speaker presentations will be available for on-demand viewing until March 19, 2021. You can login to the virtual platform to view the presentations when it is convenient for you.

### Monday, March 8, 2021

10:00 Welcome – **Nelson Dinn, University of British Columbia, Chair, WCDS Advisory Committee**

#### **Session I: Calf Health**

- 10:03 Overview by Session Chair – **Karin Orsel**
- 10:08 Presentation Title TBD – **Michael Ballou, Texas Tech University**
- 10:35 Presentation Title TBD – **Kathryn Proudfoot, University of Prince Edward Island**
- 11:00 Presentation Title TBD – **John Gilleard, University of Calgary**
- 11:30 – 12:00 **Speaker Q&A Period**

### Tuesday, March 9, 2021

#### **Session II: Nutrition**

- 10:00 Overview by Session Chair – **Masahito Oba**
- 10:05 Presentation Title TBD – **Mike Van Amburgh, Cornell University**
- 10:30 Managing high-straw dry cow diets to optimize health and performance – **Trevor DeVries, University of Guelph**
- 11:00 Presentation Title TBD – **Jacquelyn Boerman, Purdue University**
- 11:30 – 12:00 **Speaker Q&A Period**

### Wednesday, March 10, 2021

#### **Session III: Virtual Farm Tours**

- 10:00 Overview by Session Chair – **Tietsia Huyzer**
- From the comfort of your own home or office or in the barn virtually tour three progressive and innovate dairy operations.
- Locations TBD
- 10:05 Farm Tour Video #1
- 10:25 Farm Tour Video #2
- 10:45 Farm Tour Video #3
- 11:05 – 12:05 **Farm Tour Hosts Q&A Period**

## **Thursday, March 11, 2021**

### **Session IV: Student Research Presentation Competition**

10:00 Overview by Session Chair – **Karen Beauchemin**

Four graduate students will present their dairy-related research findings. To enter the competition, students submit a short summary of their research. A panel of judges then selects the top 4 research summaries based on a number of criteria, including a well written summary, demonstrating good and relevant science.

10:05 Presentation Title and Speaker TBD

10:20 Presentation Title and Speaker TBD

10:40 Presentation Title and Speaker TBD

11:00 Presentation Title and Speaker TBD

Student competition voting and awards announcement

11:25 **Nutrition Break**

### **Session V: Producer Panel**

11:30 Overview by Session Chair – **Devon Simmelink**

Three dairy producers will discuss different aspects of their farming operations.

11:35 Presenter TBD

11:50 Presenter TBD

12:10 Presenter TBD

12:30 **Producer Panel Q&A Period** (1 hour)

## **Friday, March 12, 2021**

### **Session VI: Reproduction and Genetics**

10:00 Overview by Session Chair – **Divakar Ambrose**

10:05 Advancing genetic gain in dairy cattle through genomics and reproductive technologies – **Kent Weigel, University of Wisconsin**

10:30 Impact of altering the voluntary waiting period on reproduction and economics in dairy herds – **Julio Giordano, Cornell University**

11:00 Daily profit of 3-breed crossbreds compared to Holsteins – Our experience from a 10-year designed study – **Les Hansen, University of Minnesota**

11:30 **Speaker Q&A Period**

12:00 Closing – **Nelson Dinn, University of British Columbia, Chair, WCDS Advisory Committee**

TBD = To Be Determined

*Program is subject to change*

**We aim to meet again in-person for the 2022  
WCDS 40<sup>th</sup> Anniversary celebration**

## *Who Should I Call?*

*Who at the SaskMilk office should producers call? Here's a handy guide!*

<b><i>For...</i></b>	<b><i>Call...</i></b>	<b><i>At...</i></b>
<ul style="list-style-type: none"> <li>➤ Sponsorship Requests</li> <li>➤ Donation Requests</li> <li>➤ Dairyanna's Costume and Events</li> <li>➤ School Milk Program</li> <li>➤ Nutrition Resource Ordering</li> </ul>	Anita Medl	306-721-9483
<ul style="list-style-type: none"> <li>➤ Quota Exchange and Private Quota Transfers</li> <li>➤ Leases</li> <li>➤ Transfer Credits</li> <li>➤ Security Applications</li> <li>➤ Projections for production</li> <li>➤ Name Changes</li> <li>➤ Designation of Signing Authority</li> <li>➤ Monthly production numbers for producers</li> </ul>	Bev Solie	306-721-9488
<ul style="list-style-type: none"> <li>➤ School Milk Program</li> <li>➤ Marketing Activities</li> </ul>	Chelsea Wilcoxon	306-527-0753
<ul style="list-style-type: none"> <li>➤ Producer statements</li> <li>➤ Banking info for direct deposit of milk pay</li> <li>➤ Milk pick-up issues –variances in volumes, planning to quit shipping, etc.</li> </ul>	Darlene Weighill	306-721-9491
<ul style="list-style-type: none"> <li>➤ On Farm- licensing, facilities, equipment, driveways, yards, animal care</li> <li>➤ Lab testing results</li> <li>➤ Bulk truck drivers- licensing, complaints/issues</li> <li>➤ Bulk tank calibrations</li> <li>➤ Pro Action- Food Safety (CQM), Animal Care, Traceability, Biosecurity, Environment</li> </ul>	Deb Haupstein	306-721-9486
<ul style="list-style-type: none"> <li>➤ Monthly milk prices paid to producers</li> <li>➤ Provincial &amp; National production updates</li> </ul>	Doug Miller	306-721-9485
<ul style="list-style-type: none"> <li>➤ Rayner Dairy Centre &amp; Research</li> <li>➤ Extension services</li> </ul>	Emily Morabito	306-966-6015
<ul style="list-style-type: none"> <li>➤ SaskMilk Portal Assistance</li> </ul>	Jenn Buehler	306-721-9492
<ul style="list-style-type: none"> <li>➤ Media or news stories <i>or</i> if you have been contacted by any media agency or reporter</li> <li>➤ Trade agreements, international trade updates</li> <li>➤ DEAP policy/program enquiries</li> <li>➤ Research enquiries or proposals</li> </ul>	Joy Smith	306-721-9482
<ul style="list-style-type: none"> <li>➤ Social media enquiries (Twitter, Instagram, Facebook)</li> <li>➤ Website enquiries</li> <li>➤ Newsletter advertising</li> <li>➤ Dairy Conference</li> </ul>	Julie Ell	306-721-9493

## *QUOTA EXCHANGE*

The market-clearing price established for the November 2020 Quota Exchange was **\$35,500.00**.

The next Quota Exchange will be held on **December 15, 2020**. All offers to sell and bids to purchase quota through the Quota Exchange must be submitted by midnight, **December 6, 2020**. SaskMilk recommends that offers and bids be submitted well in advance of the deadline date to ensure adequate time for corrections, if necessary.

When making bids on the Quota Exchange, the price on offers to sell quota is the minimum price that the producer is prepared to accept for that quota. Only if the market-clearing price is equal to or greater than the producer's minimum price will that producer qualify for participation in the Exchange. Conversely, the price on offers to purchase quota is the maximum price that the producer is prepared to pay for that quota. Only if the market-clearing price is equal to or less than the producer's maximum price will that producer qualify for participation in the Exchange. The clearing price is set at the price where the smallest difference exists between the accumulated volume offered for sale and the accumulated volume bid to purchase. The results of the Quota Exchange are outlined in the following Table.

### NOVEMBER 2020 QUOTA EXCHANGE RESULTS

<b>Market Clearing Price per kilogram of butterfat</b>	<b>\$ 35,500.00</b>
<b>Daily Kilograms offered to Purchase</b>	<b>16.00</b>
<b>Kilograms offered to Sell</b>	<b>37.00</b>
<b>Kilograms sold</b>	<b>16.00</b>
<b>Number of Producers</b>	
- offered to purchase	2
- purchased quota	2
- offered to sell	1
- sold quota	1

### NOVEMBER 2020 QUOTA EXCHANGE CLEARING PRICE RESULTS

Price (\$/daily kg b.f.)	No. of Sellers	Cumulative Sellers	Daily Kgs b.f. offered for sale	Cumulative sales	Cumulative Sales less Cumulative purchases	Cumulative purchases	Daily Kgs b.f. offered to purchase	Cumulative bidders	No. of buyers
\$35,000.00	1	1	37.00	37.00	21.00	16.00	0.00	2	0
<b>\$35,500.00</b>	<b>0</b>	<b>1</b>	<b>0.00</b>	<b>37.00</b>	<b>21.00</b>	<b>16.00</b>	<b>10.00</b>	<b>2</b>	<b>1</b>
\$36,000.00	0	1	0.00	37.00	31.00	6.00	6.00	1	1

\* Please contact Bev Solie at 306-949-6999 for inquiries dealing with quota management sheets, the Quota Exchange, for transfer credits, or with any other quota transactions.



## TRANSFER CREDIT SUMMARY REPORT

MONTH	# OF PRODUCERS TRANSFER IN	# OF PRODUCERS TRANSFER OUT	TOTAL KGS BUTTERFAT
October, 2019	24	24	15,246
November	32	32	23,235
December	26	26	15,625
January, 2020	27	27	18,191
February	26	26	14,525
March	17	17	7,531
April	10	10	6,670
May	6	6	3,000
June	8	8	8,328
July	11	11	13,384
August	11	11	6,964
September	30	30	22,918
<b>October</b>	<b>19</b>	<b>19</b>	<b>13,812</b>

## PRIVATE TRANSFERS PROCESSED

MONTH	DAILY KILOGRAMS
October, 2019	32.00
November	34.80
December	122.55
January, 2020	60.00
February	0.00
March	0.00
April	232.64
May	49.00
June	164.00
July	410.00
August	199.00
September	1,146.31
<b>October</b>	<b>10.00</b>

## OVER QUOTA (OVER 5 DAYS)

### REPORT BY MONTH

MONTH	# OF PRODUCERS	KGS BUTTERFAT
October, 2019	4	750
November	3	291
December	6	1,257
January, 2020	8	1,275
February	7	1,360
March	11	1,008
April	7	1,286
May	4	764
June	3	190
July	5	216
August	3	34
September	2	202
<b>October</b>	<b>2</b>	<b>174</b>



## SUMMARY REPORT OF CREDITS OCTOBER 2020 – 158 PRODUCERS

DAYS	# OF PRODUCERS	POSITIVE CREDITS ACCUMULATED (KGS OF BUTTERFAT)
+ 5	3	1,093
0 to + 5	24	6,434
TOTAL	27	7,527

DAYS	# OF PRODUCERS	NEGATIVE CREDITS ACCUMULATED (KGS OF BUTTERFAT)
-15	4	2,206
-10 to -15	46	104,827
-5 to -10	40	71,095
0 to -5	41	22,114
TOTAL	131	200,242

## LOST OPPORTUNITY REPORT

MONTH	# OF PRODUCERS	LOST OPPORTUNITY (KGS OF BUTTERFAT)
October, 2019	5	1,398
November, 2019	5	1,253
December, 2019	5	1,026
January, 2020	3	1,374
February, 2020	3	1,183
March, 2020	1	648
April, 2020	4	1,416
May, 2020	9	2,479
June, 2020	8	3,531
July, 2020	10	3,572
August, 2020	8	2,022
September, 2020	6	617
<b>October, 2020</b>	<b>3</b>	<b>491</b>

## WEIGHTED AVERAGE COMPONENT TESTS & PRICES OCTOBER 2020

Components	Average Test	Price per kilogram Class 1 to 5
Butterfat	4.3421	16.653932
Protein	3.3104	2.569889
Other Solids	5.8776	0.723706

**The average butterfat price received per kilogram was \$19.59.**

### SASKATCHEWAN MILK POOL RESULTS OCTOBER 2020

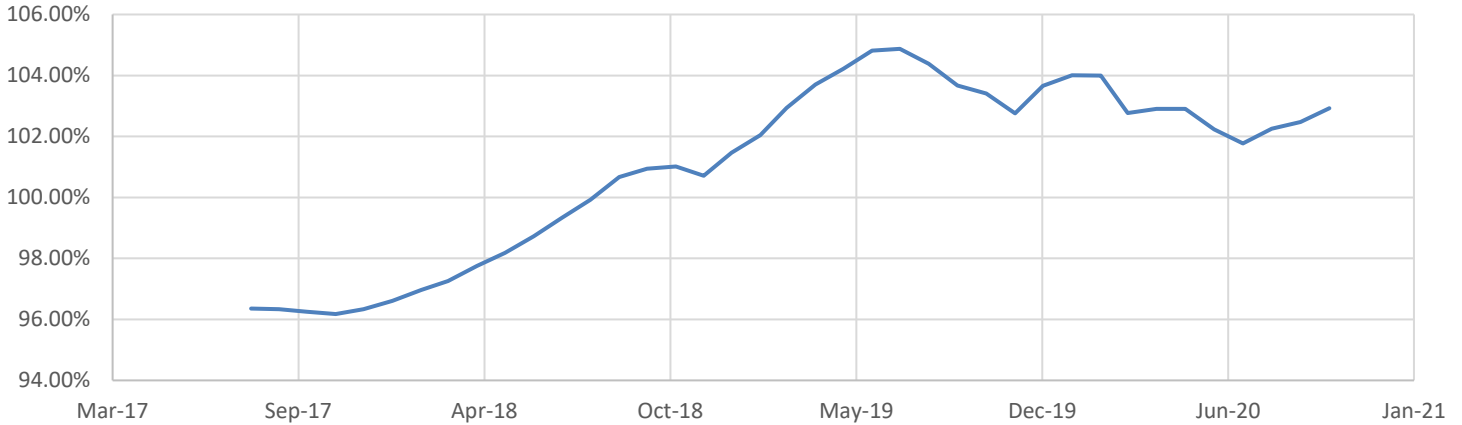
Milk Sale Revenue	\$21,501,423.50
WMP Revenue/<Expense>	<\$135,467.53>
<b>Total Revenue</b>	<b>\$21,365,955.97</b>

In October, Saskatchewan had a monthly CDC allocation of **1,096,908 kilograms** of butterfat. In the month of October, Saskatchewan production was **7,365 kgs** of butterfat **under** and cumulatively **over** by **614,810 kgs** of butterfat. On a percentage basis, Saskatchewan is **5.11% above** our CDC allocation flexibility limits based on the Continuous Quota model. The -2.00% lower flexibility limit is in effect.

	(1) Monthly Total Production  Kgs bf	(2) Total Monthly CDC Quota Allocation  Kgs bf	(3) Monthly Over or (Under) Production  Kgs bf  col. 1 – 2 = 3	(4) Lower Flexibility Limit <b>-2.00%</b>  Kgs bf  col. 8 * -1.5%	(5) Upper Flexibility Limit <b>1.25%</b>  Kgs bf  col. 8 *1.0%	(6) Cumulative Over or (Under) Production with limits  Kgs bf	(7) Cumulative Over or (Under) Production with limits (%)  col. 6 / 8	(8) Rolling 12 Month Total Quota  Kgs bf
<b>Oct-19</b>	1,082,691	1,143,505	(60,814)	-242,523	151,577	80,805	1.07%	12,126,134
<b>Nov-19</b>	1,047,766	1,085,754	(37,988)	-242,752	151,720	91,402	1.56%	12,137,583
<b>Dec-19</b>	1,088,248	1,063,255	24,993	-242,958	151,849	214,717	1.77%	12,147,887
<b>Jan-20</b>	1,095,413	920,697	174,716	-242,944	151,840	389,433	3.21%	12,147,191
<b>Feb-20</b>	1,001,524	899,946	101,578	-243,932	152,458	491,011	4.03%	12,196,610
<b>Mar-20</b>	1,055,461	1,073,511	(18,050)	-245,108	153,192	472,961	3.86%	12,255,382
<b>Apr-20</b>	970,693	865,580	105,113	-241,673	151,046	578,074	4.78%	12,083,667
<b>May-20</b>	1,020,648	947,006	73,642	-241,096	150,685	651,716	5.41%	12,054,823
<b>Jun-20</b>	990,904	989,664	1,240	-242,452	151,533	652,956	5.39%	12,122,607
<b>Jul-20</b>	1,023,353	1,044,803	(21,450)	-243,564	152,228	631,506	5.19%	12,178,203
<b>Aug-20</b>	1,023,170	1,005,440	17,730	-242,210	151,382	643,715	5.28%	12,110,521
<b>Sep-20</b>	1,022,765	1,040,287	(17,522)	-241,699	151,062	622,175	5.15%	12,084,970
<b>Oct-20</b>	1,089,543	1,096,908	(7,365)	-240,767	150,480	614,810	5.11%	12,038,373

- (1) Monthly Production in Saskatchewan
- (2) Total Monthly Quota = Class 1 sales + Monthly MSQ + Carry Forward
- (3) Difference between the monthly production (1) and the total monthly quota (2)
- (4) The Lower Flexibility Limit is -2.00% of Rolling 12 Month Total Quota (9)
- (5) The Upper Flexibility Limit is 1.25% of Rolling 12 Month Total Quota (9)
- (6) Previous Month Cumulative Over or (Under) Production + Current Monthly Over or (Under) Production (capped at lower or upper limit if applicable)
- (7) Equal to Column (6) expressed as a percentage basis within the flexibility limits
- (8) Total Monthly CDC Quota Allocation for the previous 12 months

## SK Milk Production SK Position



### INHIBITOR TEST STATIONS

SaskMilk has established a number of inhibitor test stations around the province. Producers needing to check their bulk tanks for inhibitors can take a sample to the test station closest to their location.

The test stations have the Charm Trio test strips available for testing. The Charm Trio test is the test that the plant uses. It tests for the following drugs:

Beta-lactam Drug	Detection Level <sup>†</sup> (ppb*)	US Safe Level or Tolerance / Canadian MRL (ppb*)	Sulfa Drug	Detection Level <sup>†</sup> (ppb*)	US Safe Level or Tolerance / Canadian MRL (ppb*)
Amoxicillin	3.1	10 / None	Sulfadimethoxine	4.7	10 / 10 <sup>∞</sup>
Ampicillin	7.7	10 / 10	Sulfamethazine	7.7	10 / 10 <sup>∞</sup>
Ceftiofur and Metabolites <sup>^</sup>	53	100 / 100	Tetracycline Drug	Detection Level <sup>†</sup> (ppb*)	US Safe Level/Tolerance / Canadian MRL (ppb*)
Cephapirin	14	20 / 20	Chlortetracycline	54	300 / 100
Cloxacillin	7.4	10 / None	Oxytetracycline	66	300 / 100
Penicillin G	2.2	5 / 6 <sup>&amp;</sup>	Tetracycline	21	300 / 100

<sup>†</sup> Positive at least 90% of the time with 95% confidence.

\* parts per billion or ng/mL

<sup>^</sup> Ceftiofur parent drug sensitivity is approximately 1/2 that reported in the table.

<sup>&</sup> Canadian MRL for penicillin G is 0.01 IU/ml, equivalent to 6 ppb.

<sup>∞</sup> Canadian MRL for sulfa drugs are singly or in combination with other MRL listed sulfonamides.

Test stations are located at the following locations:

1. Swift Current, SK - Agrifoods truck bay - 675 Cheadle Street West Office 306-773-1097 or Rodger Ruf 306-741-3261
2. Star City, SK - Star City Colony - Reuben Tschetter 306-921-9381
3. Grenfell, SK - Jim Ross 306-697-2232
4. Yorkton, SK - Ford Dairy Farms Inc. - Bud and Margaret Ford 306-782-7240
5. Saskatoon, SK – Agrifoods Truck Bay - east of the Saputo plant receiving bay  
lead hand – Mike V. or Mike K. 306-664-0202 after hours: 306-668-8135

Charm tests strips and Charm testers are now available for purchase through SaskMilk. Agrifoods is now carrying SNAP test kits for tetracyclines as well as beta lactams. For further information you can contact: Deb Haupstein 306-721-9486

## Code of Practice

### 5 Transportation

Each person responsible for transporting animals in Canada, or arranging for their transport, must ensure that the entire transportation process (including loading, transit, and unloading) does not cause injury or undue suffering to the animals.

The federal requirements for animal transport are covered under the *Health of Animals Regulations, Part XII* (80). They are enforced by the Canadian Food Inspection Agency (CFIA) with the assistance of other federal, provincial and territorial authorities. Some provinces also have additional regulations related to animal transport.

If you are responsible for transporting animals, you **must** be familiar with, and follow, Canada's animal transport requirements. If you do not comply with the regulations, you could be fined or prosecuted. If your actions or neglect are considered animal abuse, you could also be charged and convicted under the *Criminal Code of Canada* and/or provincial regulations (78).

The scope of the Dairy Code of Practice ends at the farm gate, but includes requirements and considerations that affect the transportation process. So as to avoid duplication, the Code of Practice - Transportation should be used as a reference document for the actual transportation process (76)

## DAIRY FARM WORKERS

**AVAILABLE IMMEDIATELY!**



- **DAIRY, HOG & POULTRY WORKERS**
- **TRUCK DRIVERS, COMBINE OPERATORS**
- **GENERAL LABOR & MANY MORE.**

**ATLANTIC JOB'S** provides you with :

- **Very experienced dairy farm workers**
- **Workers providing permanent long term commitment to you**



# Atlantic

**JOBS Ltd.**

**Specializing In Skilled Jobs Placement**

We will make your hiring process easy and stress free by securing the best workers available that have the experience, skills, qualifications and language requirements to help your business prosper.

**ATLANTIC JOBS** has partnered with farmers for many years to provide excellent results.

Call now for information at absolutely no obligation to you

**1-877-488-4699 or email [CLIENTS@ATLANTICJOBS.NET](mailto:CLIENTS@ATLANTICJOBS.NET)**

## Did You Grow Perennial Silage in 2020?

As part of the Dairy Research Cluster 3, Dairy Farmers of Canada and AAFC have funded a nationwide study looking at silage production and management factors and linking them to silage quality. The goal of this study is to develop best management practices (BMP) for silage production based on geographical region and silage system. This is part of an interprovincial effort to improve the sustainability of the Canadian dairy industry by providing producers with evidence-based information on silage BMP's and therefore reduce production costs.

### Eligible to Participate?

We need producers who...

- Grew perennial (alfalfa, grass, or grass/alfalfa mix) silage in 2020; and
- Stored their first cut silage in a bunker, drive over pile, vertical silo, or as wrapped bales.

### Two Ways to Participate

1. Visit the link below to participate in the online survey. It only takes a few minutes and includes questions related to general farm characteristics, silage management and the storage of your 2020 first cut perennial silage. We can provide you with a paper copy of the survey and a self-addressed envelope to return the survey to us also. To receive these, please contact Carla by phone or email (see below).

Survey Link: <https://www.surveymonkey.com/r/2020CDNSilageStudy>

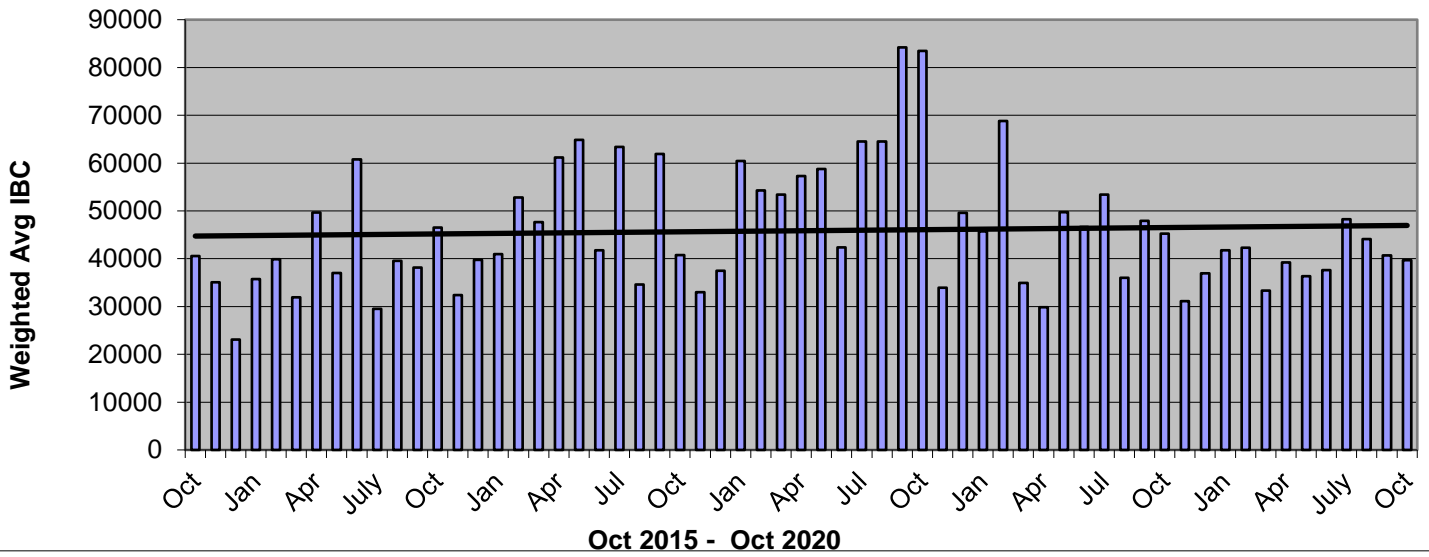
or

2. Arrange a farm visit for collection of a 1 kg silage sample and a short survey (can be by phone or email). Silage quality results including *in vitro* dry matter digestibility will be returned to you.

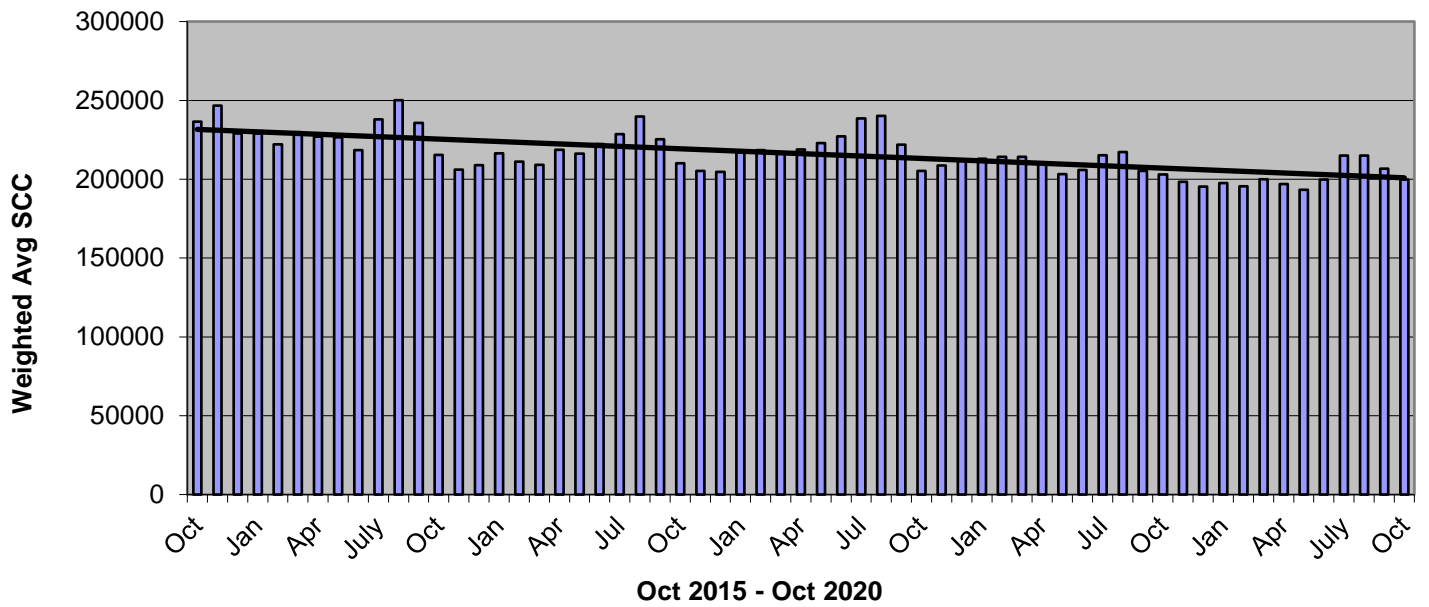
For more information on the study and how you can participate please contact:

Carla Plett  
M.Sc. Student, Dairy Science  
Department of Animal Science  
University of Manitoba  
Email: [plettc35@myumanitoba.ca](mailto:plettc35@myumanitoba.ca)  
Cell: 1-204-371-5272

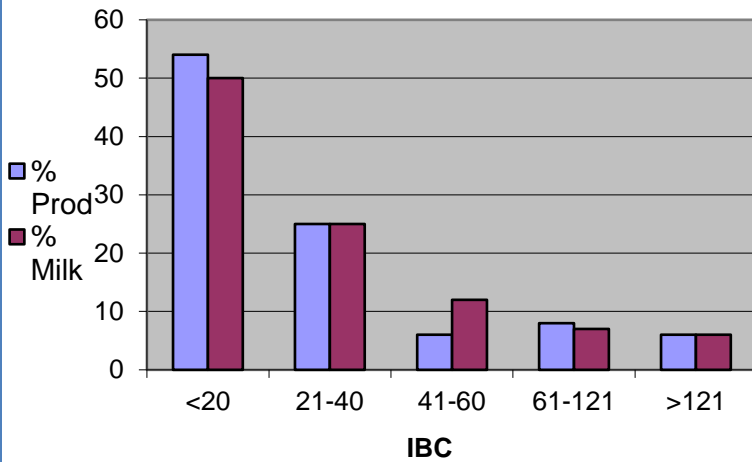
### Monthly Weighted Average IBC



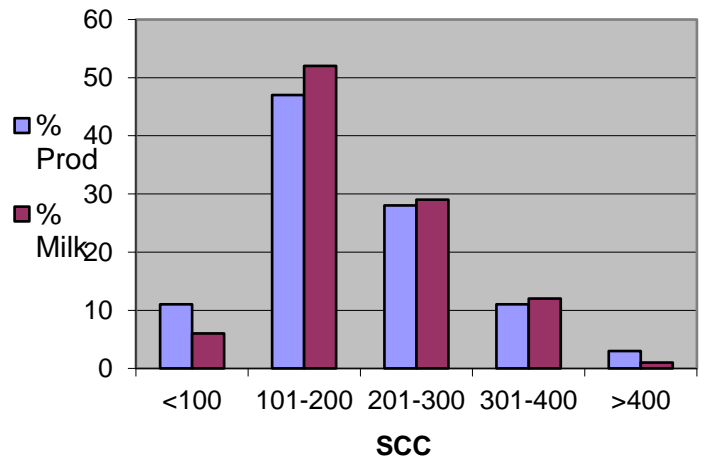
### Monthly Weighted Average SCC



### Oct 2020



### Oct 2020



## QUOTA LISTING or CLASSIFIED AD SERVICE

SaskMilk offers a free quota listing service as part of its Newsletter. Anyone wishing to sell or purchase quota, cows or miscellaneous dairy equipment is welcome to contact the SaskMilk office at (306) 949-6999. All prices and negotiations will be independent of SaskMilk. **Please note that ads will be posted in two issues and will then be removed unless SaskMilk is notified otherwise.**

## CLASSIFIEDS

### DOWNIZING HERD OF REGISTERED HOLSTEINS

For Sale: 1) Calves 1-6 months  
2) Calves 6-12 months  
3) Breeding Heifers  
4) Bred & Spring Heifers  
5) 1<sup>st</sup>, 2<sup>nd</sup>, & 3<sup>rd</sup> Calvers

LOTS OF DEEP PEDRIGREES AS MAJORITY WILL HAVE VG OR EX DAMS FROM TODAY'S TOP LEADING SIREs

**Please contact: Lyle Pretty (306) 535-3889** at MIL-EN-ROY Farms 1981 Ltd., White City, SK

## BOARD OF DIRECTORS

Matthew Flaman – Chair  
(306) 537-9634  
[flamanmj@gmail.com](mailto:flamanmj@gmail.com)

Albert Leyenhorst – Vice-Chair  
(306) 230-0154  
[albertleyenhorst@gmail.com](mailto:albertleyenhorst@gmail.com)

Gordon Ell  
(306) 535-1922  
[gt.ell@sasktel.net](mailto:gt.ell@sasktel.net)

John Hylkema  
(604) 798-6450  
[jonhylkema@gmail.com](mailto:jonhylkema@gmail.com)

Tom MacKenzie  
(306) 352-2292  
[tommymilk@icloud.com](mailto:tommymilk@icloud.com)

Blaine McLeod  
(306) 631-8053  
[rb.mcleod@sasktel.net](mailto:rb.mcleod@sasktel.net)

Anthony Nienhuis  
(306) 221-1598  
[nienhuisanthony@gmail.com](mailto:nienhuisanthony@gmail.com)

Leonard Wipf  
(306) 491-0432  
[leonard.countryclover@gmail.com](mailto:leonard.countryclover@gmail.com)

For further information, please contact the SaskMilk office.

444 McLeod Street  
Regina, Saskatchewan S4N 4Y1  
Telephone: (306) 949-6999  
Fax: (306) 949-2605  
Website: [www.saskmilk.ca](http://www.saskmilk.ca)

## Reminder!

**The deadline date for Quota Transfer, Quota Exchange, and 10% Transfer Limit Exemptions is the 6<sup>th</sup> of each month**

Your Quota Transfer, and 10% Exemption Applications must be received on or before the 6<sup>th</sup> of the month in order to be effective the 1<sup>st</sup> of the following month

Quota Exchange forms must be received in the SaskMilk office on or before the 6<sup>th</sup> of the month for that month's Exchange