

In this Issue:

SaskMilk in the Community.....	2
Very Dairy Breakfast....	3
Quota Exchange	8
Production	11
S. dublin Update.....	14
SCC/IBC.....	15
Classifieds	16
Directors.....	16

Chair Report



I want to take the opportunity to address the SaskMilk members after a very busy summer. I congratulate our producers on the strong and consistent milk production throughout the year. We have responded to the need for change and adaption in the challenges before us.

We are again in the nomination and election time of the year. I reflect on this in a significant way since it is time for me to exit my Board involvement with a mandatory stepdown after 9 years on the SaskMilk Board. Starting from Dairy Farmers of Saskatchewan and being part of the first interim board of directors, I have always supported the concept of term limits as essential to succession and transition. I hope that my departure will open a position for producers on the board, as well as for new board members that can bring new perspectives and new life to the organization. I urge all members to be involved and carefully consider the openings and options. The nominations are important as they create options and choice during the ballot process. In nominating, consider individuals that will be respectful team players, good communicators, strategic thinkers, risk takers, and be passionate about the dairy industry with an optimistic attitude. It is important to have individuals that represent the industry rather than their own operation. Encourage people to put names forward that will give back to an industry that has supported them in the past and hopefully into the future.

Throughout the last few years, the SaskMilk Board has been working with our partners in the Western Milk Pool which has resulted in a better future for all of us. Examples of this include the agreements to supply milk to processing operations, expansions, and new plants. In our province, this has led to significant expansion and investment in processing, as well as MDI in Manitoba. Further opportunities and deals are being worked on to secure a balanced industry with both production and processing in the west to meet the needs of the future. Please plan to attend the Fall Producer Meetings, held on November 4th, 5th and 6th. We have very important information to consult with you on and we will look for your indication of support. It will be important for all producers to attend. Due to the confidential nature of the discussions, I cannot elaborate further in this article other than a strong encouragement to attend.

I wish you all the best as you continue harvest, please call me or any board member for any dialogue. We desire to have a solid relationship with our members.

Respectfully Submitted,
Melvin Foth

Save the Date!

2019 Fall Producer Meetings Dates and Locations

November 4th – Fort Qu'Appelle
November 5th – Swift Current
November 6th – Warman

9th Annual Dairy Info Day
January 22, 2019
Brian King Centre, Saskatoon

MILLIGAN BIOFUELS (2018)
Processing Canola that Doesn't Make the Grade
A DIVISION OF EAGLEPOINT VENTURES LTD.

BIO MEAL
NATURAL COLD PRESSED FLOWABLE

- * 38% NATURAL PROTEIN
- * 12-14% FAT CONTENT
- * 82-84% TDN
- * BETTER DIGESTABILITY
CFIA INSPECTED

BIO OIL
COLD PRESSED NATURAL ENVIRONMENTALLY FRIENDLY

- * NATURAL HIGH ENERGY
- * ESSENTIAL FATTY ACIDS
- * METHANE REDUCTION
- * BETTER DIGESTABILITY
CFIA INSPECTED

BUY DIRECT FROM PROCESSING PLANT!

CALL TODAY! 306-272-6284
907 HWY 16 EAST, FOAM LAKE, SK S0A 1A0
WWW.MILLIGANBIOFUELS.COM

SaskMilk Upcoming Promotional Events*

(*we are participating in or have sponsored)

September 18-20	Student Leadership Conference 2019 - Watrous
September 23	Prairie Summit Race - Buffalo Pound
September 29	Rayner Dairy Barn – Very Dairy Breakfast - Saskatoon
October 18	Regina Teachers Conference – Regina
October 21	First Responders Marathon – Saskatoon
November 1-3	SaskFit, Saskatchewan's Fitness and Health Conference – Regina
November 2	Regina Pats & SaskMilk Cup Give-A-Way – Regina
November 13	No Sugar Tonight – Diabetes Canada – Saskatoon
November 25-30	Agribition – Regina

SaskMilk in the Community



Left: SaskMilk General Manager Peter Brown participating in the 2019 Queen City Marathon (SaskMilk Sponsored) Above: CKRM Country Cookout (SaskMilk Sponsored)

Barn Tours

Free Breakfast

Very Dairy Breakfast

**September 29th, 2019
10:00 a.m. - 2:00 p.m.**

**Rayner Dairy Barn
101 East Road
University of Saskatchewan**

Face Painting

Sask**milk**

Games

Saskatchewan Junior Hockey League Tickets

Enter to receive a 10-pack of SJHL
tickets
(10 prize packs in total).

As part of SaskMilk's sponsorship agreement, we have received SJHL 2019/2020 regular season tickets.

If interested in receiving a 10-pack of tickets, please email or fax your producer number and mailing address to the SaskMilk office
info@saskmilk.ca or 306-949-2605.

[2019-2020 Schedule](#)



ALFALFA
2793 Milk Pounds
per ton of DM
First cut alfalfa put up dry, no rain
RFV 133, DM protein 16.4
Other alfalfa
Prices from 7 -10 cents per lb.
Feed tests available.
For further info please call
Murray at 1.306.320.1041

DAIRY FARM WORKERS AVAILABLE IMMEDIATELY!



- **DAIRY, HOG & POULTRY WORKERS**
- **TRUCK DRIVERS, COMBINE OPERATORS**
- **GENERAL LABOR & MANY MORE.**

ATLANTIC JOB'S provides you with :

- **Very experienced dairy farm workers**
- **Workers providing permanent long term commitment to you**



Atlantic
JOBS Ltd.

Specializing In Skilled Jobs Placement

We will make your hiring process easy and stress free by securing the best workers available that have the experience, skills, qualifications and language requirements to help your business prosper.

ATLANTIC JOBS has partnered with farmers for many years to provide excellent results.

Call now for information at absolutely no obligation to you

1-877-488-4699 or email CLIENTS@ATLANTICJOBS.NET

Code of Practice

3.8 Calves

Generally, dairy calves are separated from their mothers shortly after birth. There are benefits to both calf and dam by allowing the pair to bond. Allowing the calf to spend a longer period of time with the dam may result in lowered morbidity and mortality in the calf; however, separation stress to both the cow and calf will be higher the longer they are together. Cow health is generally improved by allowing the calf to suckle (related to oxytocin effects on the post-partum uterus). Whether the calf is removed immediately or allowed to suckle the cow, it is important to ensure that the calf receives adequate colostrum (41).

RECOMMENDED BEST PRACTICES

- a. monitor calf body temperature for two weeks following birth
- b. reduce separation distress by either removing the calf shortly after birth or by using a two-step weaning process (41)
- c. monitor calves closely for signs of illness and treat promptly.

Congratulations!

The College of Agriculture and Bioresources is pleased to inform SaskMilk that Victor Guevara Oquendo has been awarded the SaskMilk Graduate Scholarship in the amount of \$1,500.

Victor is a Ph.D. student in the Department of Animal and Poultry Science. His thesis is entitled, “Physiochemical, Molecular Structural and Nutritional Evaluation of Whole Crop Faba Bean Plant as Hay and Silage for Ruminants”

Congratulations to Victor!

Thank you to the 2019 DFC AGM Sponsors

GOLD SPONSORS – “Hunter Brothers”



GOLD SPONSORS



SILVER SPONSORS



Who Should I Call?

Who at the SaskMilk office should producers call? Here's a handy guide!

For...	Call...	At...
<ul style="list-style-type: none"> ➤ Sponsorship Requests ➤ Donation Requests ➤ Dairyanna's Costume and Events 	Anita Medl	306-721-9483
<ul style="list-style-type: none"> ➤ School Milk Program ➤ Nutrition Resource Ordering 	Bev Eckert	306-721-9490
<ul style="list-style-type: none"> ➤ Quota Exchange and Private Quota Transfers ➤ Transfer Credits ➤ Security Applications ➤ Estimates for production ➤ Name Changes ➤ Designation of Signing Authority ➤ Monthly production numbers for producers ➤ Producer information for lending institutions ➤ Passwords for quota management sheet access 	Bev Solie	306-721-9488
<ul style="list-style-type: none"> ➤ Dairy Conference ➤ Producer statements ➤ Banking info for direct deposit of milk pay ➤ Milk pick-up issues –variances in volumes, planning to quit shipping, etc. 	Darlene Weighill	306-721-9491
<ul style="list-style-type: none"> ➤ On Farm- licensing, facilities, equipment, driveways, yards, animal care ➤ Lab testing results ➤ Bulk truck drivers- licensing, complaints/issues ➤ Bulk tank calibrations ➤ Pro Action- Food Safety (CQM), Animal Care, Traceability, Biosecurity, Environment 	Deb Hauptstein	306-721-9486
<ul style="list-style-type: none"> ➤ Monthly milk prices paid to producers ➤ Provincial & National production updates 	Doug Miller	306-721-9485
<ul style="list-style-type: none"> ➤ Adding, editing information on Producer Transfer Credit List 	Jenn Buehler	306-721-9492
<ul style="list-style-type: none"> ➤ Media or news stories <i>or</i> if you have been contacted by any media agency or reporter ➤ Trade agreements, international trade updates ➤ DEAP policy/program enquiries ➤ Research enquiries or proposals 	Joy Smith	306-721-9482
<ul style="list-style-type: none"> ➤ Social media enquiries (Twitter, Instagram, Facebook) ➤ Website enquiries ➤ Newsletter advertising 	Julie Ell	306-721-9493

QUOTA EXCHANGE

The market-clearing price established for the September 2019 Quota Exchange was **\$36,050.00**.

The next Quota Exchange will be held on **October 15, 2019**. All offers to sell and bids to purchase quota through the Quota Exchange must be received at the SaskMilk office by midnight, **October 6, 2019**.

SaskMilk recommends that offers and bids be submitted well in advance of the deadline date to ensure adequate time for corrections, if necessary.

When making bids on the Quota Exchange, the price on offers to sell quota is the minimum price that the producer is prepared to accept for that quota. Only if the market-clearing price is equal to or greater than the producer's minimum price will that producer qualify for participation in the Exchange. Conversely, the price on offers to purchase quota is the maximum price that the producer is prepared to pay for that quota. Only if the market-clearing price is equal to or less than the producer's maximum price will that producer qualify for participation in the Exchange. The clearing price is set at the price where the smallest difference exists between the accumulated volume offered for sale and the accumulated volume bid to purchase. The results of the Quota Exchange are outlined in the following Table.

SEPTEMBER 2019 QUOTA EXCHANGE RESULTS

Market Clearing Price per kilogram of butterfat	\$ 36,050.00
Daily Kilograms offered to Purchase	68.00
Kilograms offered to Sell	15.81
Kilograms sold	15.81
Number of Producers	
- offered to purchase	3
- purchased quota	1
- offered to sell	4
- sold quota	4

SEPTEMBER 2019 QUOTA EXCHANGE CLEARING PRICE RESULTS

Price (\$/daily kg b.f.)	No. of Sellers	Cumulative Sellers	Daily Kgs b.f. offered for sale	Cumulative sales	Cumulative Sales less Cumulative purchases	Cumulative purchases	Daily Kgs b.f. offered to purchase	Cumulative bidders	No. of buyers
\$33,000.00	1	1	0.81	0.81	-67.19	68.00	25.00	3	1
\$34,000.00	1	2	10.00	10.81	-32.19	43.00	0.00	2	0
\$34,250.00	1	3	4.00	14.81	-28.19	43.00	0.00	2	0
\$34,500.00	1	4	1.00	15.81	-27.19	43.00	20.00	2	1
\$36,050.00	0	4	0.00	15.81	-7.19	23.00	23.00	1	1

* Please contact Bev Solie at 306-949-6999 for inquiries dealing with quota management sheets, the Quota Exchange, for transfer credits, or with any other quota transactions.



TRANSFER CREDIT SUMMARY REPORT

MONTH	# OF PRODUCERS TRANSFER IN	# OF PRODUCERS TRANSFER OUT	TOTAL KGS BUTTERFAT
August	20	22	18,781
September	21	17	23,836
October	27	20	25,667
November	36	36	27,234
December	29	29	26,841
January, 2019	27	27	15,748
February	26	26	18,341
March	25	25	12,480
April	27	23	21,937
May	19	19	13,404
June	22	21	15,814
July	24	24	13,461
August	27	27	18,297

PRIVATE TRANSFERS PROCESSED

MONTH	DAILY KILOGRAMS
August	65.44
September	70.92
October	233.45
November	328.00
December	60.00
January, 2019	253.29
February	164.25
March	50.00
April	21.20
May	0
June	35.00
July	158.51
August	55.00

OVER QUOTA (OVER 5 DAYS) REPORT BY MONTH

MONTH	# OF PRODUCERS	KGS BUTTERFAT
August	2	230
September	4	647
October	2	294
November	4	626
December	6	962
January, 2019	10	2,377
February	13	3,220
March	11	2,701
April	14	2,473
May	10	2,556
June	14	2,559
July	7	1,148
August	4	898

SUMMARY REPORT OF CREDITS AUGUST, 2019 – 163 PRODUCERS

DAYS	# OF PRODUCERS	POSITIVE CREDITS ACCUMULATED (KGS OF BUTTERFAT)
+ 5	5	1,600
0 to + 5	39	16,238
TOTAL	44	17,838
DAYS	# OF PRODUCERS	NEGATIVE CREDITS ACCUMULATED (KGS OF BUTTERFAT)
-15	5	-9,072
-10 to -15	28	-74,398
-5 to -10	39	-62,639
0 to -5	47	-31,112
TOTAL	119	-177,221

LOST OPPORTUNITY REPORT

MONTH	# OF PRODUCERS	LOST OPPORTUNITY (KGS OF BUTTERFAT)
August, 2019	5	1,883
July, 2019	6	2,220
June, 2019	3	1,719
May, 2019	2	1,345
April, 2019	0	0
March, 2019	1	57
February, 2019	1	186
January, 2019	1	18
December, 2018	1	331
November, 2018	3	330
October, 2018	0	0
September, 2018	0	0
August, 2018	3	1,039

WEIGHTED AVERAGE COMPONENT TESTS & PRICES AUGUST, 2019

Components	Average Test	Price per kilogram Class 1 to 5
Butterfat	4.1066	16.697962
Protein	3.1566	2.555676
Other Solids	5.8796	0.686043

The average butterfat price received per kilogram was \$19.64.

SASKATCHEWAN MILK POOL RESULTS AUGUST 2019

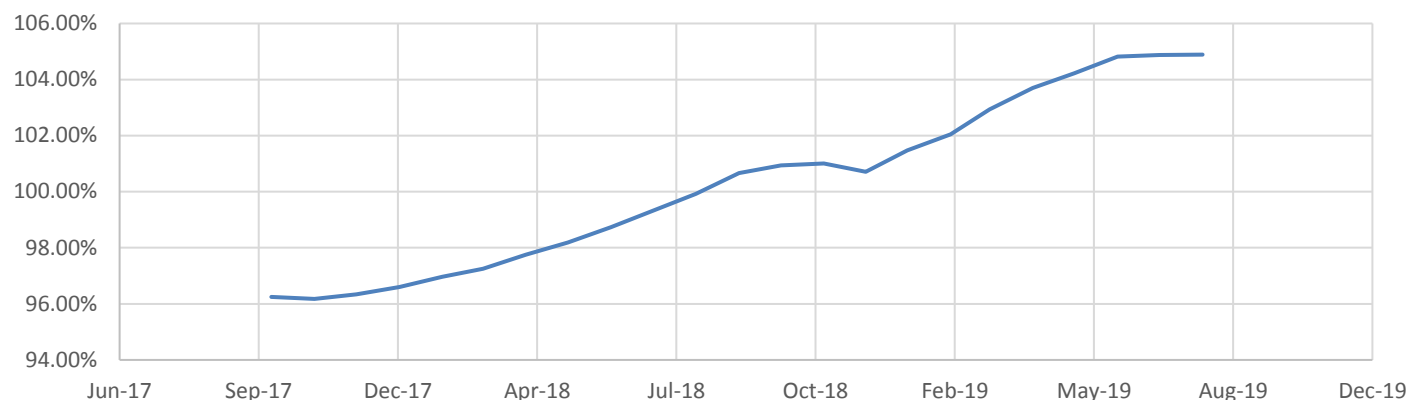
Milk Sale Revenue	\$ 19,472,595.85
Western Milk Pool	\$ 960,974.73
Total Pool Value	\$ 20,433,570.58

In August, Saskatchewan had a monthly CDC allocation of **1,038,800 kilograms** of butterfat. In the month of August, Saskatchewan production was **16,369** of butterfat **over** and cumulatively **over** by **241,425 kilograms** of butterfat. On a percentage basis, Saskatchewan is **2.04% above** our CDC allocation flexibility limits based on the Continuous Quota model. The -2.00% lower flexibility limit is in effect.

	(1) Monthly Total Production Kgs bf	(2) Total Monthly CDC Quota Allocation Kgs bf	(3) Monthly Over or (Under) Production Kgs bf col. 1 – 2 = 3	(4) Lower Flexibility Limit -2.00% Kgs bf col. 8 * -1.5%	(5) Upper Flexibility Limit 1.25% Kgs bf col. 8 *1.0%	(6) Cumulative Over or (Under) Production with limits Kgs bf	(7) Cumulative Over or (Under) Production with limits (%) col. 6 / 8	(8) Rolling 12 Month Total Quota Kgs bf
Jul-18	982,110	955,315	26,795	-230,035	143,772	(88,244)	-0.77%	11,501,756
Aug-18	988,502	974,319	14,183	-230,359	143,974	(48,899)	-0.42%	11,517,937
Sep-18	979,618	946,287	33,331	-230,593	144,121	(131,409)	-1.14%	11,529,665
Oct-18	1,034,312	1,026,685	7,627	-231,475	144,672	(123,782)	-1.07%	11,573,770
Nov-18	1,005,120	1,074,305	(69,185)	-233,899	146,187	(192,967)	-1.65%	11,694,944
Dec-18	1,050,954	1,052,951	(1,997)	-234,522	146,576	(194,964)	-1.66%	11,726,103
Jan-19	1,053,651	921,393	132,258	-233,846	146,154	(62,706)	-0.54%	11,692,295
Feb-19	952,042	850,527	101,515	-233,155	145,722	38,809	0.33%	11,657,731
Mar-19	1,059,099	1,014,739	44,360	-233,467	145,917	83,169	0.71%	11,673,338
Apr-19	1,014,853	1,037,295	(22,442)	-235,167	146,980	60,727	0.52%	11,758,366
May-19	1,036,056	975,850	60,206	-235,510	147,193	109,973	.93%	11,775,477
Jun-19	1,002,199	921,880	80,319	-235,031	146,894	190,292	1.62%	11,751,546
Jul-19	1,023,972	989,207	34,765	-235,709	147,318	225,056	1.91%	11,785,438
Aug-19	1,038,800	1,022,431	16,369	-236,671	147,919	241,425	2.04%	11,833,550

- (1) Monthly Production in Saskatchewan
- (2) Total Monthly Quota = Class 1 sales + Monthly MSQ + Carry Forward
- (3) Difference between the monthly production (1) and the total monthly quota (2)
- (4) The Lower Flexibility Limit is -2.00% of Rolling 12 Month Total Quota (9)
- (5) The Upper Flexibility Limit is 1.25% of Rolling 12 Month Total Quota (9)
- (6) Previous Month Cumulative Over or (Under) Production + Current Monthly Over or (Under) Production (capped at lower or upper limit if applicable)
- (7) Equal to Column (6) expressed as a percentage basis within the flexibility limits
- (8) Total Monthly CDC Quota Allocation for the previous 12 months

SK Milk Production Sask Position



INHIBITOR TEST STATIONS

SaskMilk has established a number of inhibitor test stations around the province. Producers needing to check their bulk tanks for inhibitors can take a sample to the test station closest to their location.

The test stations have the Charm Trio test strips available for testing. The Charm Trio test is the test that the plant uses. It tests for the following drugs:

Beta-lactam Drug	Detection Level [†] (ppb*)	US Safe Level or Tolerance / Canadian MRL (ppb*)	Sulfa Drug	Detection Level [†] (ppb*)	US Safe Level or Tolerance / Canadian MRL (ppb*)
Amoxicillin	3.1	10 / None	Sulfadimethoxine	4.7	10 / 10 [∞]
Ampicillin	7.7	10 / 10	Sulfamethazine	7.7	10 / 10 [∞]
Ceftiofur and Metabolites [^]	53	100 / 100	Tetracycline Drug	Detection Level [†] (ppb*)	US Safe Level/Tolerance / Canadian MRL (ppb*)
Cephapirin	14	20 / 20	Chlortetracycline	54	300 / 100
Cloxacillin	7.4	10 / None	Oxytetracycline	66	300 / 100
Penicillin G	2.2	5 / 6 ^{&}	Tetracycline	21	300 / 100

[†] Positive at least 90% of the time with 95% confidence.

* parts per billion or ng/mL

[^] Ceftiofur parent drug sensitivity is approximately 1/2 that reported in the table.

[&] Canadian MRL for penicillin G is 0.01 IU/ml, equivalent to 6 ppb.

[∞] Canadian MRL for sulfa drugs are singly or in combination with other MRL listed sulfonamides.

Test stations are located at the following locations:

1. Swift Current, SK - Agrifoods truck bay - 675 Cheadle Street West
Office 306-773-1097 or Rodger Ruf 306-741-3261
2. Star City, SK - Star City Colony - Reuben Tschetter 306-921-9381
3. Grenfell, SK - Jim Ross 306-697-2232
4. Yorkton, SK - Ford Dairy Farms Inc. - Bud and Margaret Ford 306-782-7240
5. Saskatoon, SK – Agrifoods Truck Bay - east of the Saputo plant receiving bay
lead hand – Mike V. or Mike K. 306-664-0202 after hours: 306-668-8135

Charm tests strips and Charm testers are now available for purchase through SaskMilk. Agrifoods is now carrying SNAP test kits for tetracyclines as well as beta lactams.

For further information you can contact: Deb Haupstein 306-721-948

Research

Update on Research Activities at the Rayner Dairy Research and Teaching Facility, University of Saskatchewan

Dr. T. Mutsvangwa, Professor of Ruminant Nutrition

This is the final portion of the three-part series about research activities at the Rayner Centre. more detailed information, please contact the principal investigators (P.I.) for the individual projects using the contact details provided.

Planned Research Projects

- **Evaluation of quinoa seeds as a feed ingredient in dairy cow diets.** Quinoa (*Chenopodium quinoa* Wild) is a high value, pseudocereal crop that is grown for its edible seeds. It has become one of the most popular health foods across the world because, *inter alia*, it is gluten-free, is high in protein and anti-oxidants, and has an excellent balance of all the nine essential amino acids. Because of a growing demand for quinoa seed for human consumption, available data indicates that the total acreage of quinoa grown has increased from 5,000 acres in 2015 to more than 35,000 acres in 2017, representing a 600% expansion in quinoa acres. The total harvest in 2017 was 12,250 MT. Of this amount, 3,675 MT were off-grade, and could not be used for human consumption. Quinoa seed contain relatively high levels of starch (38.5-46.9%), protein (12-13.4%), and fat (4.04-5.08%), so it has potential to be used as a feed ingredient in dairy cow diets. This study will evaluate the impact of feeding graded levels of quinoa seeds (as an alternative feed ingredient) on production in dairy cows. Partial funding support is available from an industry partner, and there are efforts to secure additional funding from ADF. The P.I. on this project is Dr. Tim Mutsvangwa (306-966-1695; tim.mutsvan@usask.ca).
- **Evaluating the optimum calcium content in low-energy, pre-partum diets with or without anionic salts for dairy cows.** In early lactation, dairy cows often fail to consume adequate amounts of feed to meet their nutrient requirements for milk production, thus they “milk off their backs” to support nutrient requirements for production. This can put cows at risk of metabolic diseases, which can result in unhealthy cows that produce less milk, often require veterinarian care, are less fertile and thereby cause economic losses for dairy farmers. In the last few years, research studies and on-farm observations have provided evidence that feeding low energy pre-partum diets might improve feed intake in fresh cows, thereby decreasing the incidence of metabolic diseases in fresh cows. With this approach, pre-partum diets are fed to far-off and close-up dry cows that contain less energy (~1.30 Mcal NE_L/kg) than previously recommended (~1.60 Mcal NE_L/kg), thus avoiding the undesirable overconsumption of energy prior to freshening. This approach has gained popularity on dairy farms in western Canada; however, it has not been established if the inclusion of anionic salts in close-up, low energy diets is necessary. Traditionally, anionic salts have been included in close-up dry cow diets to manipulate the dietary cation-anion balance (DCAB) as a strategy to minimize the risk of milk fever. Also, it has not been established what the optimum dietary content of calcium is in low energy close-up diets. Traditionally, a dietary calcium content of 0.60% has been recommended but there is anecdotal evidence that a calcium content of 1.2% might be beneficial in terms of minimizing the risk of milk fever. A study will be conducted to determine the interactions of DCAB and dietary calcium content on the risk of milk fever in dairy cows. Efforts are underway to secure funding from ADF. The P.I. on this project is Dr. Tim Mutsvangwa (306-966-1695; tim.mutsvan@usask.ca).
- **The evaluation of flaxseed products as energy and protein sources for high-producing dairy cows.** Canada produces about 40% of world flaxseed (also called linseed) production. (cont. on pg. 14)

Of the Canadian flaxseed production, Saskatchewan accounts for 60% of Canadian production. The recent 5-year average yearly Saskatchewan production was 736,000 MT. A high proportion (~80%) of flaxseed that is produced in Canada is exported; however, there is some recent activity by new processors, especially for oil (for the Chinese market) and whole flax products, and this could potentially result in increased local use of flaxseed. The primary market for disposal of the flaxseed meal will be dairy herds in western Canada. Typically, whole flaxseed contains 42-46% oil and 21% protein, making it a good supplement for dairy cows because of its high contents of energy (fat) and protein. Recent research on feeding whole flaxseed or flaxseed meal to dairy cows is lacking, with limited previous studies using dairy cows that were producing 14 kg of milk/d in a diet containing 10% expeller- or solvent-extracted flaxseed meal. Today's dairy cows can produce well over 50 kg/d, so their energy and protein requirements are much greater than those of cows that were used in previous studies. This study will evaluate the effects of feeding whole flaxseed, solvent-extracted flaxseed meal and cold-pressed flaxseed meal to dairy cows on production in dairy cows. The P.I. on this project is Dr. Tim Mutsvangwa (306-966-1695; tim.mutsvan@usask.ca).

- **Characterization of temporal changes in the peripheral neutrophil function of dairy cows during the pre- and post-calving period.** Dairy cows have an increased susceptibility to illness and infection around the calving time that has been related to temporary immunosuppression during this period. Currently, it is unknown when neutrophil function is altered (pre- or post-calving period), how long it persists or how it differs in cows with different metabolic/production statuses. This study will allow the identification of risk factors for the development of endometritis and may allow the development of management strategies to improve individual animal health during this period. The overarching aim of the study is to understand the temporal changes in peripheral neutrophil function. The P.I. on this project is Dr. Dinesh Dadarwal (306-966-7095; dinesh.dadarwal@usask.ca).

***Salmonella dublin*: Testing Summary**

SaskMilk, in conjunction with the Ministry of Agriculture, has developed a surveillance project of *S. dublin* in Saskatchewan dairy herds.

The first phase of the project was to test all bulk tanks for the presence of antibodies to *S. dublin*. This testing was completed earlier in the year and producers were notified as to the results. 15 bulk tanks tested positive.

The second phase of the project is the collection and testing of blood samples from 10 calves in each herd. Producers can sample 10 calves with the suggested ages of 3-10 months. If possible 6 -10 months is recommended in order to eliminate the influence of maternal antibodies. All blood sample testing must be completed by March 15, 2020.

To date, 20 herds have submitted blood samples, 6 had animals with positive test results and 4 of these herds did not have a positive bulk tank test result.

Producers are encouraged to blood test their young stock. Submission forms have been sent to all producers and a number of veterinary clinics. Funding for this testing is covered under the CAP project. Expenditures approved are:

- Laboratory fees for testing services
- Shipping costs
- Sample collection supplies
- Technician fees for preparing and packaging samples (maximum \$30/hr)

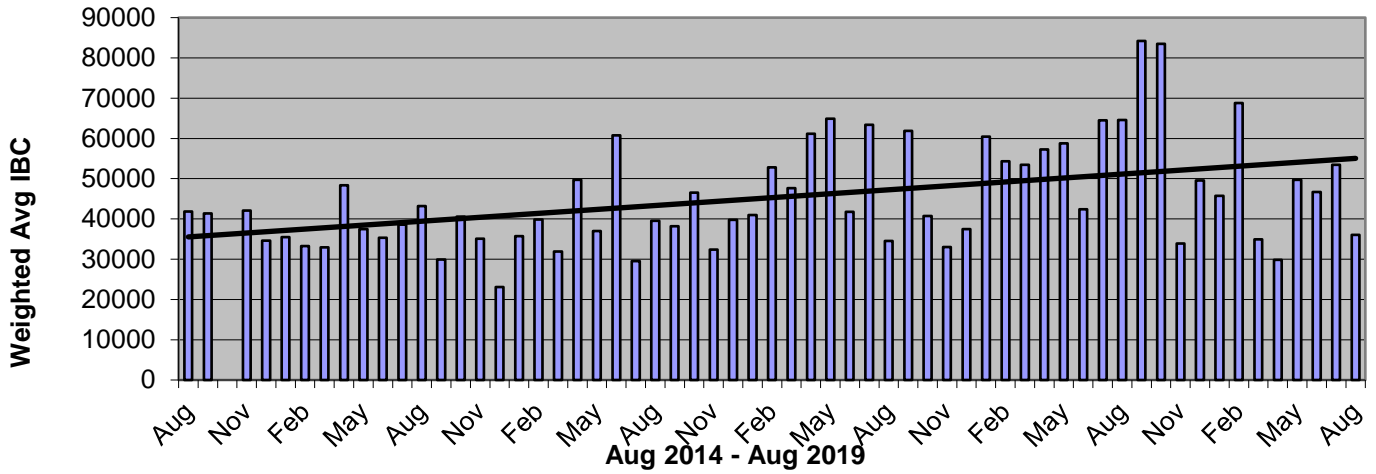
Producers are responsible for any costs related to the collection of blood samples (eg. veterinary fees is applicable). If you have any questions, please contact:

Deb Hauptstein, SaskMilk

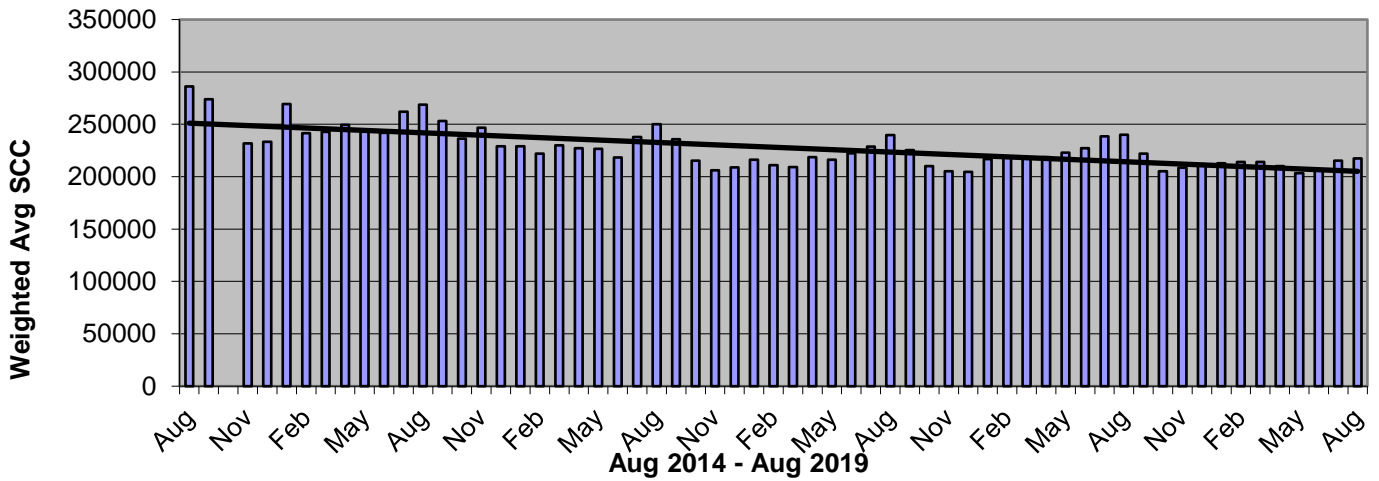
Office: 306-721-9486 Cell: 306-536-3860

Provincial Weighted Average

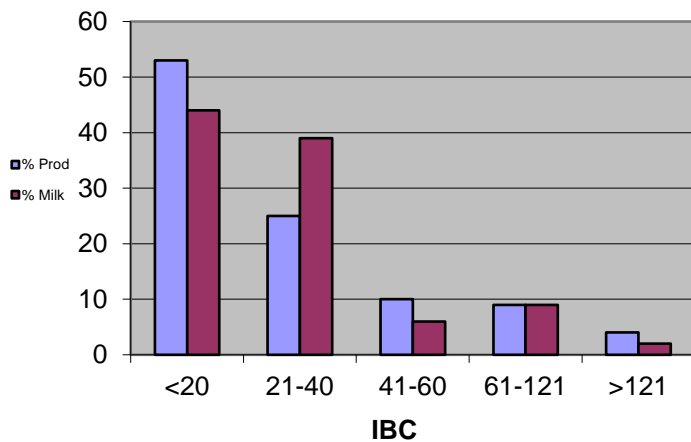
Monthly Weighted Average IBC



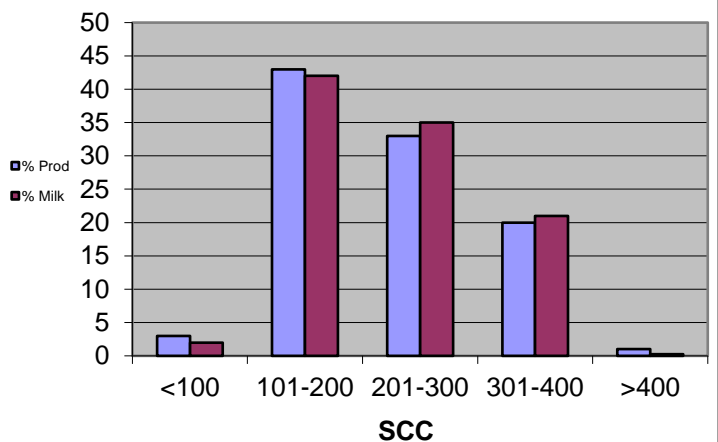
Monthly Weighted Average SCC



Aug 2019



Aug 2019



QUOTA LISTING or CLASSIFIED AD SERVICE

SaskMilk offers a free quota listing service as part of its Newsletter. Anyone wishing to sell or purchase quota, cows or miscellaneous dairy equipment is welcome to contact the SaskMilk office at (306) 949-6999. All prices and negotiations will be independent of SaskMilk. **Please note that ads will be posted in two issues and will then be removed unless SaskMilk is notified otherwise.**

CLASSIFIEDS

47 kgs to lease. Call Josh (306) 774-8909

New startup looking for up to 20 kgs of quota. **Call or text Sheldon Goossen at (306) 841-7485**

Reminder!

The deadline date for Quota Transfer, Quota Exchange, and 10% Transfer Limit Exemptions is the 6th of each month

Your Quota Transfer, and 10% Exemption Applications must be received on or before the 6th of the month in order to be effective the 1st of the following month

Quota Exchange forms must be received in the SaskMilk office on or before the 6th of the month for that month's Exchange

BOARD OF DIRECTORS

Melvin Foth – Chair
(306) 225-4678
fvl@sasktel.net

Albert Leyenhorst – Vice-Chair
(306) 230-0154
albertleyenhorst@gmail.com

Don Feitsma – Alternate Vice - Chair
(306) 270-4700
feitsmadairy@gmail.com

Denise Coghill
(306) 699-7764
denmars@sasktel.net

Matthew Flaman
(306) 537-9634
flamanmj@gmail.com

John Hylkema
(604) 798-6450
jonhulkema@gmail.com

Tom MacKenzie
(306) 352-2292
tommymilk@icloud.com

Blaine McLeod
(306) 631-8053
rb.mcleod@sasktel.net

Leonard Wipf
(306) 491-0432
leonard.countryclover@gmail.com

For further information, please contact the SaskMilk office.

444 McLeod Street
Regina, Saskatchewan S4N 4Y1
Telephone: (306) 949-6999
Fax: (306) 949-2605
Website: www.saskmilk.ca