

### *Stats Can 2016 Census Results*

#### **In this Issue:**

In the Community .....	3
Notices .....	4-5
Who to Call? .....	6
Quota Exchange .....	7
Production .....	10
SCC/IBC .....	11
Code of Practice .....	13
Classifieds .....	15
Directors .....	15

Statistics Canada began releasing the 2016 Census of Agriculture results; Canada's dairy sector was addressed in more detail in the May 24 release.

It is important to note that the Canadian Dairy Information Centre (CDIC) places the total number of dairy farms at 11,280 in 2016. CDIC categorizes a dairy farm as any farm that ships milk. However, Statistics Canada categorizes farm type by its primary source of revenue, and therefore says there were 10,519 dairies in 2016.

The census found that between 2011 and 2016 milk production increased 8.7 percent despite a decrease in the number of cows. While it may seem incongruous to the public, Statistics Canada attributed the increased efficiency to "improvements in feed quality and management, genetics and advancements in technology, including the use of robotic milking."

DFC asserts that this is also a testament to Canadian dairy farmers' ability to respond to market demand for increased milk supply. It is also the result of farmers' efforts to improve production efficiency through innovations such as genomics and other on-farm technologies, and the application of new outcomes from dairy research investments.

The census also confirmed other trends:

- **Dairy Cattle Numbers:** Both the total number of dairy cattle and number of farms reporting dairy cattle continued to decrease between 2011 and 2016. The total number of dairy cattle (young and mature) in Canada decreased 3.8 percent to 1.4 million, while the number of farms reporting dairy cattle fell 14 percent over the five-year period.
- **Sector Consolidation:** According to Statistics Canada the number of dairy farms with 200 or fewer dairy cattle decreased, while the number of farms with more than 200 increased and now represents 11 percent of dairy farms.
- **Statistic Canada observed that "mid-sized farms [101-200 cows] are more likely to report robotic milking than small and large-sized farms", with 44.7 percent of robotic milking farms having 101-200 cows.**
- **Robots were not the only factors contributing to on-farm efficiency. Advances have also been made in animal housing, milk technology, herd management, and feed management.**
- **Just under half of dairy farms use automated environmental controls for animal housing, and/or automated animal feeding technology.**

Census results are available at <http://www.statcan.gc.ca/eng/ca2016>

## *SaskMilk Upcoming Promotional Events\**

*(\*we are participating in or have sponsored)*

<b>June 2 - 3</b>	Saskatchewan High School Track & Field Championship - Saskatoon
<b>June 11</b>	Osteoporosis Canada – Bone China Tea - Saskatoon
<b>June 23 - 24</b>	Southern Saskatchewan Summer Solstice - Gravelbourg
<b>June 26</b>	Carmichael Outreach – Tournament of Hope - Regina
<b>July 5 - 9</b>	Junior Ag Showcase – Saskatoon
<b>July 7 – 10</b>	Provincial Dance Competition – Saskatoon
<b>July 25 – 27</b>	FCC Farm to Fork Tours and Food Influencer Program – Saskatoon
<b>August 2 - 6</b>	Queen City Exhibition – Regina
<b>August 4 – 6</b>	Rib Fest - Saskatoon
<b>August 8 – 13</b>	Saskatoon Exhibition – Saskatoon
<b>September 6 - 10</b>	YX Eats – Saskatoon
<b>September 10</b>	Queen City Marathon – Recovery Camp, Chocolate Milk – Regina
<b>September 16</b>	Beaver Flat 50 – Recovery Camp, Chocolate Milk - Regina
<b>September 29 – 30</b>	Premiere Wine Show – Saskatoon
<b>October 14</b>	Whiskey Tasting – Regina
<b>November 10</b>	Canadian Diabetes – No Sugar Tonight – Saskatoon
<b>November 20 – 25</b>	Agribition – Regina

### **REMINDER: PLUG INS AND BREAKERS FOR BULK TRUCK TRAILERS**

The bulk truck trailers are being upgraded. The pumps on the new trailers require a 30 amp breaker and correspondingly a 30 amp plug in.

Individual notices have been sent to producers who need to change or upgrade their plug/breaker to accommodate this. If you have received a notice but have not yet done the upgrade, please do so as soon as possible.

The requirements for the 30 amp plug is:

The generic part # is L6-30 the hubble manufacturer number is HBL 2620. This should be all the electricians need.

When upgrading you should make sure that your wiring complies with the electrical code.

*SaskMilk in the Community...*

*Dietician Tour  
Kornelius Dairy Farm*



*Regina Red Sox Sponsorship*



*AITC Farm Tour - Watrous*

## TRACEABILITY - NLID TAGS

Farms that currently use herd management tags (tags bought from local retailers without an RFID button tag) will be required to use NLID tags effective September 1, 2017.

You can order tags by:

1. Calling NLID at 1-877-771-6543
2. Print and complete the [NLID Order form](#) and mail/fax back to:
  - o NLID
  - o Box 2065
  - o Brantford, Ontario
  - o N3T 5W5
  - o Fax: 519-756-3502

You do not need to be a Holstein Canada member or to register your animals in order to order tags. . There are a variety of tag options to choose from. Talk to the customer service representative to determine the tag that will best suit your farm.

Remember the proAction Traceability program requires that effective Sept 2017, all dairy calves must be dual tagged using NLID tags.

If you have questions or require further information contact Deb Haupstein at: [deb.haupstein@saskmilk.ca](mailto:deb.haupstein@saskmilk.ca)  
306-721-9486

---

---

### Dairy Barn, potential startup or cow/calf operation

**Barn, Quonsets, house, etc.**  
**Viscount, SK**  
**\$419, 900**  
**MLS #604848**

Art Urbanowski  
Royal Le Page Hallmark  
306-222-2206  
Saskatoon, SK



---

---

## Reminder!

**The deadline date for Quota Transfer, Quota Exchange, Lease Applications, and 10% Transfer Limit Exemptions is the 6<sup>th</sup> of each month**

Your Quota Transfer, Lease, and 10% Exemption Applications must be received on or before the 6<sup>th</sup> of the month in order to be effective the 1<sup>st</sup> of the following month

Quota Exchange forms must be received in the SaskMilk office on or before the 6<sup>th</sup> of the month for that month's Exchange

# Growing Forward 2 Programs Provide Opportunities for your Operation

*Adapted by Kerry Lowndes, PAg, South Sask River AEGP technician  
From article by Sarah Sommerfeld, PAg, Saskatchewan Ministry of Agriculture*

For many producers across the province, the 2016 growing season has posed many challenges. There is still much work left to do, but producers may also be focusing their attention to planning for the 2017 season. Plans may include development of a new water source, improving manure management or managing agriculture plastics. For these types of on-farm projects, producers can access cost-shared funding through the Growing Forward 2 framework of agriculture programs funded by the Federal and Provincial Governments. The Growing Forward 2 agriculture policy framework will be ending on March 31, 2018. With that date in mind, there are deadlines to be aware of with respect to the different funding programs available.

The Farm and Ranch Water Infrastructure Program (FRWIP) provides cost-shared funding to help develop secure water sources. These water sources include dugouts, large or small diameter wells, and increasing irrigated acres. **FRWIP applications must be received by August 1, 2017. All claim forms for approved projects must be submitted by February 15, 2018.**

The Farm Stewardship Program (FSP) provides eligible producers with financial assistance to implement beneficial management practices (BMPs). When applying to the FSP, two types of program applications exist - pre-approval or rebate. Pre-approval applications require that projects must receive prior approval before any work starts. Rebate applications do not require pre-approval, and the program application can be submitted once the project is complete. **FSP pre-approval applications must be received by June 30, 2017. All claim forms for approved projects and all rebate applications must be received by January 31, 2018.**

For producers wanting to improve manure management, two BMPs exist. The *Manure Storage Enhancement BMP* and *Manure Application Equipment & Technologies BMP*. The FSP will cover 30 per cent of the eligible costs up to a maximum of \$50,000 and \$30,000 respectively for implementing these BMPs. Producers looking to recycle agricultural plastics can apply for the *Plastic Grain Bag Roller BMP*. Cost-shared funding is available to cover 50 per cent of the eligible costs up to a maximum of \$5,000.

For further information on Growing Forward 2 programs or for technical assistance regarding a specific on-farm project, contact your local Regional Forage Specialist, or your Agri-Environmental Group Plan technician working within your watershed. In the South Saskatchewan River Watershed your technicians are Leah Tallis (306-291-7499) and Kerry Lowndes (306-460-4987). Info is also available from the Agriculture Knowledge Centre at 1-866-457-2377 or Program Design and Delivery Branch at 1-877-869-4008.



Make protecting our environment a priority

**Growing Forward 2** is coming to a close March 31, 2018.

There are some deadlines you should be aware of:

**Farm Stewardship Program** pre-approval applications must be submitted by **June 30, 2017**. Pre-approval and rebate claim forms must be submitted by **January 31, 2018**.

**Farm and Ranch Water Infrastructure Program** applications must be submitted by **August 1, 2017** and claims by **February 15, 2018**.

For assistance contact your local Agri-Environmental Group Plan technician working in your watershed.

# Who should I call?

*Who at the SaskMilk office should producers call? Here's a handy guide!*

<i>For...</i>	<i>Call...</i>	<i>At...</i>
<ul style="list-style-type: none"> <li>➤ Sponsorship Requests</li> <li>➤ Donation Requests</li> <li>➤ Dairyanna's Costume and Events</li> </ul>	Anita Medl	306-721-9483
<ul style="list-style-type: none"> <li>➤ School Milk Program</li> <li>➤ Nutrition Resource Ordering</li> </ul>	Bev Eckert	306-721-9490
<ul style="list-style-type: none"> <li>➤ Quota Exchange and Private Quota Transfers</li> <li>➤ Transfer Credits</li> <li>➤ Security Applications</li> <li>➤ Estimates for production</li> <li>➤ Name Changes</li> <li>➤ Designation of Signing Authority</li> <li>➤ Monthly production numbers for producers</li> <li>➤ Producer information for lending institutions</li> <li>➤ Passwords for quota management sheet access</li> </ul>	Bev Solie	306-721-9488
<ul style="list-style-type: none"> <li>➤ Dairy Conference</li> </ul>	Darlene Weighill	306-721-9491
<ul style="list-style-type: none"> <li>➤ On Farm- licensing, facilities, equipment, driveways, yards, animal care</li> <li>➤ Lab testing results</li> <li>➤ Bulk truck drivers- licensing, complaints/issues</li> <li>➤ Bulk tank calibrations</li> <li>➤ Pro Action- Food Safety (CQM), Animal Care, Traceability, Biosecurity, Environment</li> </ul>	Deb Haupstein	306-721-9486
<ul style="list-style-type: none"> <li>➤ Producer statements</li> <li>➤ Banking info for direct deposit of milk pay</li> <li>➤ Milk pick-up issues –variances in volumes, planning to quit shipping, etc.</li> </ul>	Dianne Cardinal	306-721-9489
<ul style="list-style-type: none"> <li>➤ Monthly milk prices paid to producers</li> <li>➤ Provincial &amp; National production updates</li> </ul>	Doug Miller	306-721-9485
<ul style="list-style-type: none"> <li>➤ Adding, editing information on Producer Transfer Credit List</li> <li>➤ Newsletter advertising</li> <li>➤ Updating email/fax information for producer notices/send outs</li> </ul>	Jenn Buehler	306-721-9492
<ul style="list-style-type: none"> <li>➤ Media or news stories <i>or</i> if you have been contacted by any media agency or reporter</li> <li>➤ Social media enquiries (twitter etc.)</li> <li>➤ Trade agreements, international trade updates</li> <li>➤ DEAP policy/program enquiries</li> <li>➤ Website enquiries</li> <li>➤ Research enquiries or proposals</li> </ul>	Joy Smith	306-721-9482

# QUOTA EXCHANGE

The market-clearing price established for the June 2017 Quota Exchange was **\$32,000.00**

The next Quota Exchange will be held on **July 15, 2017**. All offers to sell and bids to purchase quota through the Quota Exchange must be received at the SaskMilk office by midnight, **July 6, 2017**. SaskMilk recommends that offers and bids be submitted well in advance of the deadline date to ensure adequate time for corrections, if necessary.

When making bids on the Quota Exchange, the price on offers to sell quota is the minimum price that the producer is prepared to accept for that quota. Only if the market-clearing price is equal to or greater than the producer's minimum price will that producer qualify for participation in the Exchange. Conversely, the price on offers to purchase quota is the maximum price that the producer is prepared to pay for that quota. Only if the market-clearing price is equal to or less than the producer's maximum price will that producer qualify for participation in the Exchange. The clearing price is set at the price where the smallest difference exists between the accumulated volume offered for sale and the accumulated volume bid to purchase. The results of the Quota Exchange are outlined in the following Table.

## JUNE 2017 QUOTA EXCHANGE RESULTS SUMMARY

<b>Market Clearing Price per kilogram of butterfat</b>	<b>\$ 32,000.00</b>
<b>Daily Kilograms offered to Purchase</b>	<b>77.00</b>
<b>Kilograms offered to Sell</b>	<b>14.32</b>
<b>Kilograms sold</b>	<b>14.32</b>
<b>Number of Producers</b>	
- offered to purchase	<b>8</b>
- purchased quota	<b>2</b>
- offered to sell	<b>7</b>
- sold quota	<b>7</b>

## JUNE 2017 QUOTA EXCHANGE CLEARING PRICE RESULTS

Price (\$/daily kg b.f.)	No. of Sellers	Cumulative Sellers	Daily Kgs b.f. offered for sale	Cumulative sales	Cumulative Sales less Cumulative purchases	Cumulative purchases	Daily Kgs b.f. offered to purchase	Cumulative bidders	No. of buyers
\$25,000.00	1	1	0.25	0.25	-76.75	77.00	0.00	8	0
\$26,000.00	0	1	0.00	0.25	-76.75	77.00	10.00	8	1
\$28,000.00	1	2	0.10	0.35	-66.65	67.00	6.00	7	1
\$29,000.00	1	3	0.85	1.20	-59.80	61.00	14.00	6	1
\$29,850.00	1	4	10.00	11.20	-35.80	47.00	0.00	5	0
\$30,000.00	2	6	3.05	14.25	-32.75	47.00	0.00	5	0
\$30,111.00	0	6	0.00	14.25	-32.75	47.00	11.00	5	1
\$30,309.00	0	6	0.00	14.25	-21.75	36.00	9.00	4	1
\$31,000.00	1	7	0.07	14.32	-12.68	27.00	0.00	3	0
\$31,311.00	0	7	0.00	14.32	-12.68	27.00	10.00	3	1
<b>\$32,000.00</b>	<b>0</b>	<b>7</b>	<b>0.00</b>	<b>14.32</b>	<b>-2.68</b>	<b>17.00</b>	<b>9.00</b>	<b>2</b>	<b>1</b>
\$32,050.00	0	7	0.00	14.32	6.32	8.00	8.00	1	1

\* Please contact Bev Solie at 306-949-6999 for inquiries dealing with quota management sheets, the Quota Exchange, for transfer credits, or with any other quota transactions.

## TRANSFER CREDIT SUMMARY REPORT

MONTH	# OF PRODUCERS TRANSFER IN	# OF PRODUCERS TRANSFER OUT	TOTAL KGS BUTTERFAT
May	16	12	12,695
June	13	11	16,170
July	23	18	19,214
August	19	17	17,923
September	21	21	26,026
October	20	20	29,340
November	21	20	20,858
December	18	21	25,158
January, 2017	18	20	18,475
February	14	13	10,555
March	18	16	15,492
April	18	20	14,786
May	17	13	11,238

## PRIVATE TRANSFERS PROCESSED

MONTH	DAILY KILOGRAMS
Jun	123.34
Jul	63.56
Aug	10.00
Sept	62.9
Oct	4.00
Nov	254.46
Dec	1800
Jan 2017	120
Feb	142.61
Mar	0.00
Apr	36
May	21.5

## OVER QUOTA (OVER 5 DAYS) REPORT BY MONTH

MONTH	# OF PRODUCERS	KGS BUTTERFAT
May	16	3,183
June	13	1,559
July	11	604
August	5	556
September	2	185
October	2	150
November	2	267
December	6	937
January, 2017	14	3,091
February	12	4,010
March	6	992
April	15	3,098
May	16	3,569



## SUMMARY REPORT OF CREDITS May, 2017 – 160 PRODUCERS

DAYS	# OF PRODUCERS	POSITIVE CREDITS ACCUMULATED (KGS OF BUTTERFAT)
+ 5	16	10,574.90
0 to + 5	45	22,763.28
TOTAL	61	33,338.18
DAYS	# OF PRODUCERS	NEGATIVE CREDITS ACCUMULATED (KGS OF BUTTERFAT)
-15	3	4,499.25
-10 to -15	15	29,912.93
-5 to -10	34	33,306.28
0 to -5	47	25,537.26
TOTAL	99	93,225.71

## LOST OPPORTUNITY REPORT

MONTH	# OF PRODUCERS	LOST OPPORTUNITY (KGS OF BUTTERFAT)
May, 2017	3	196
April, 2017	3	718
March 2017	1	250
February 2017	1	20
January 2017	0	0
December 2016	2	253
November 2016	2	911
October 2016	4	1,049
September 2016	4	1,656
August 2016	2	856
July 2016	6	1,676
June 2016	6	2,072
May 2016	6	2,349

## WEIGHTED AVERAGE COMPONENT TESTS & PRICES May, 2017

Components	Average Test	Price per kilogram Class 1 to 5
Butterfat	3.963	11.389608
Protein	3.3159	8.389592
Other Solids	5.7309	1.213558

Based on the average component tests for the province, the average price received was **\$79.9105** per hectolitre. **The average butterfat price received per kilogram was \$20.09**

## SASKATCHEWAN MILK POOL RESULTS May 2017

Milk Sale Revenue	\$ 16,790,408.54
Western Milk Pool	\$ 1,489,120.89
Plant of Last Resort Service	\$ (56,122.95)
<b>Total Pool Value</b>	<b>\$ 18,223,406.48</b>

In May, Saskatchewan had a monthly CDC allocation of **944,242 kilograms** of butterfat. In the month of May, Saskatchewan production was **36,932** of butterfat **under** and cumulatively **under** by **-436,437 kilograms** of butterfat. On a percentage basis, Saskatchewan is **-4.07%\*** below our CDC allocation flexibility limits based on the Continuous Quota model.

	(1) Monthly Total Production  Kgs bf	(2) Total Monthly CDC Quota Allocation  Kgs bf	(3) Monthly Over or (Under) Production  Kgs bf  col. 1 – 2 = 3	(4) Lower Flexibility Limit (1.5%)  Kgs bf  col. 9 * -1.5%	(5) Upper Flexibility Limit 1.0%  Kgs bf  col. 9 *1.0%	(6) Cumulative Over or (Under) Production with limits  Kgs bf	(7) Cumulative Over or (Under) Production with limits in - %  col. 6 / 9	(8) Over Quota or (Lost Production Opportunity)  Kgs bf	(9) Rolling 12 Month Total Quota  Kgs bf
<b>May-16</b>	860,608	850,625	9,983	(150,289)	50,096	<b>(81,504)</b>	<b>-0.81%</b>	0	10,019,240
<b>Jun-16</b>	826,609	849,222	(22,613)	(151,158)	50,386	<b>(104,116)</b>	<b>-1.03%</b>	0	10,077,201
<b>Jul-16</b>	845,806	868,218	(22,412)	(152,058)	50,686	<b>(126,591)</b>	<b>-1.25%</b>	0	10,137,192
<b>Aug-16</b>	825,798	882,075	(56,277)	(204,229)	51,057	<b>(153,172)</b>	<b>-1.79%*</b>	0	10,211,472
<b>Sept-16</b>	827,969	873,806	(45,837)	(308,055)	51,343	<b>(228,896)</b>	<b>-2.23%*</b>	0	10,268,507
<b>Oct-16</b>	868,097	921,301	(53,204)	(414,923)	51,865	<b>(282,099)</b>	<b>-2.72%*</b>	0	10,373,069
<b>Nov-16</b>	857,053	889,657	(32,604)	(417,825)	52,228	<b>(314,704)</b>	<b>-3.01%*</b>	0	10,445,620
<b>Dec-16</b>	899,756	962,250	(62,494)	(417,827)	52,228	<b>(377,405)</b>	<b>-3.61%*</b>	0	10,445,669
<b>Jan-17</b>	898,489	882,882	15,607	(418,189)	52,274	<b>(361,798)</b>	<b>-3.46%*</b>	0	10,454,719
<b>Feb-17</b>	814,858	818,070	(3,212)	(418,707)	52,338	<b>(365,010)</b>	<b>-3.49%*</b>	0	10,467,685
<b>Mar-17</b>	908,424	916,745	(8,321)	(421,301)	52,663	<b>(373,330)</b>	<b>-3.54%*</b>	0	10,532,530
<b>Apr-17</b>	882,347	907,191	(28,844)	(424,946)	53,118	<b>(399,414)</b>	<b>-3.76%*</b>	0	10,623,648
<b>May-17</b>	907,310	944,242	(36,932)	(750,204)	53,586	<b>(436,437)</b>	<b>-4.07%*</b>	0	10,717,196

(1) Monthly Production in Saskatchewan

(2) Total Monthly Quota = Class 1 sales + Monthly MSQ + Carry Forward

(3) Difference between the monthly production (1) and the total monthly quota (2)

(4) The Lower Flexibility Limit is -1.5% of Rolling 12 Month Total Quota (9)

(5) The Upper Flexibility Limit is 1.0% of Rolling 12 Month Total Quota (9)

(6) Previous Month Cumulative Over or (Under) Production + Current Monthly Over or (Under) Production (capped at lower or upper limit if applicable)

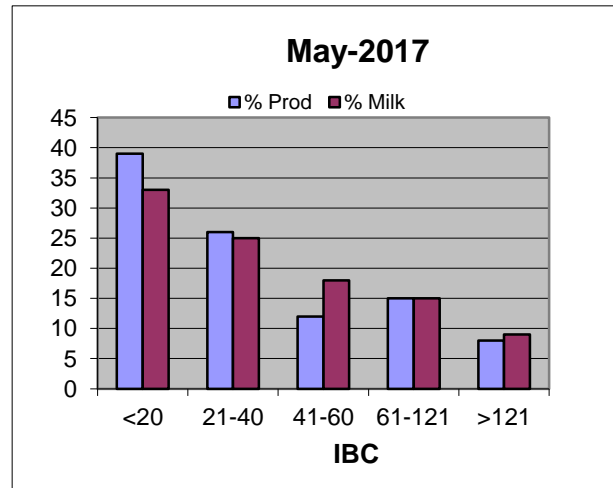
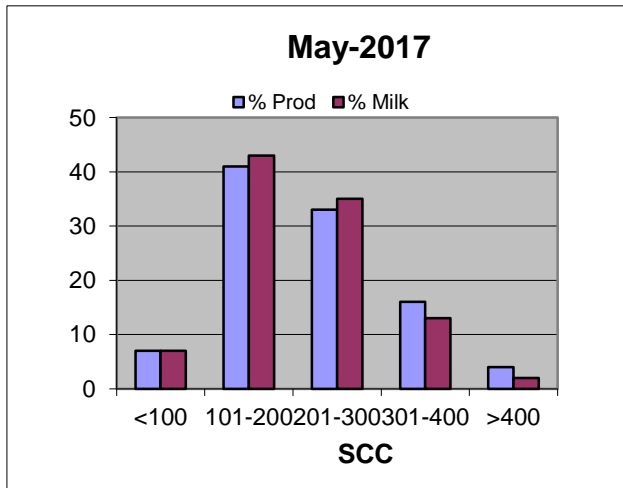
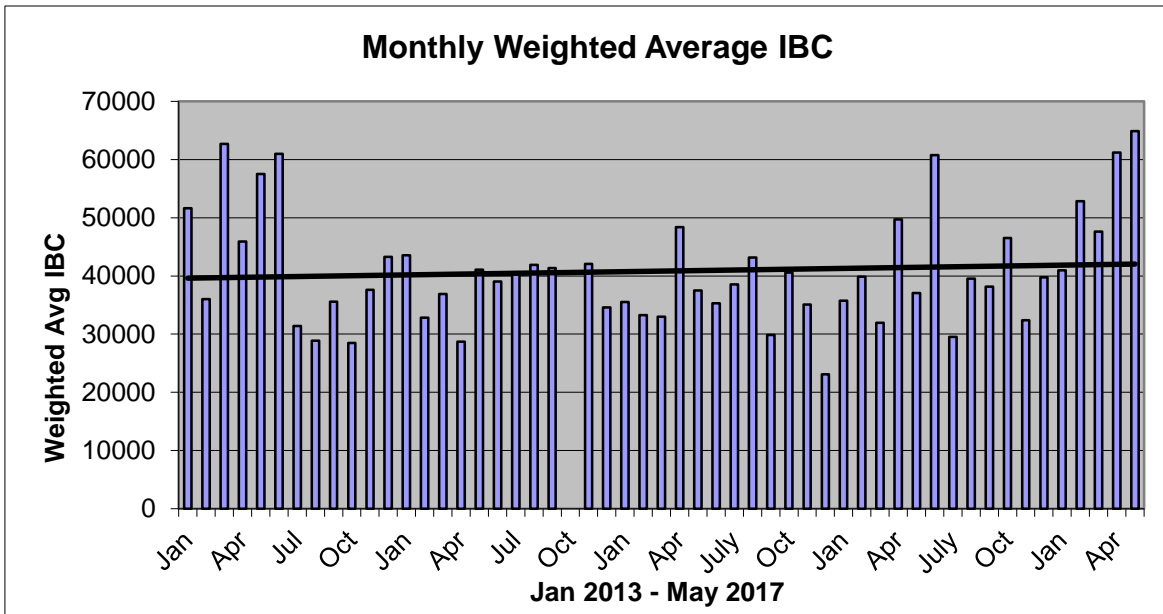
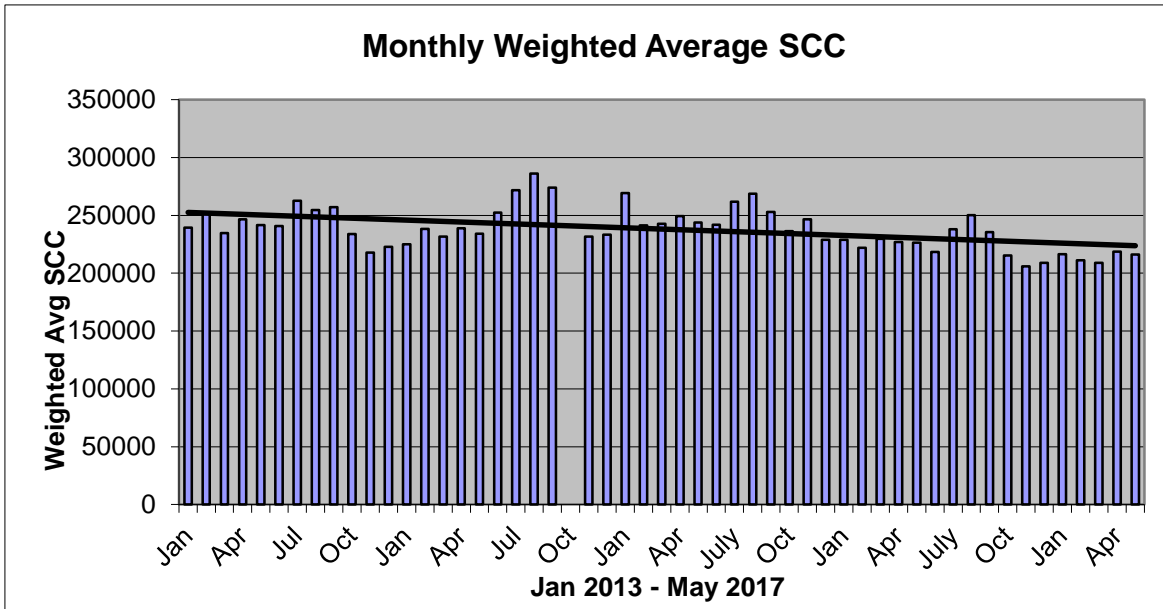
(7) Equal to Column (6) expressed as a percentage basis within the flexibility limits

(8) Over Quota or (Lost production opportunity) outside of flexibility limits

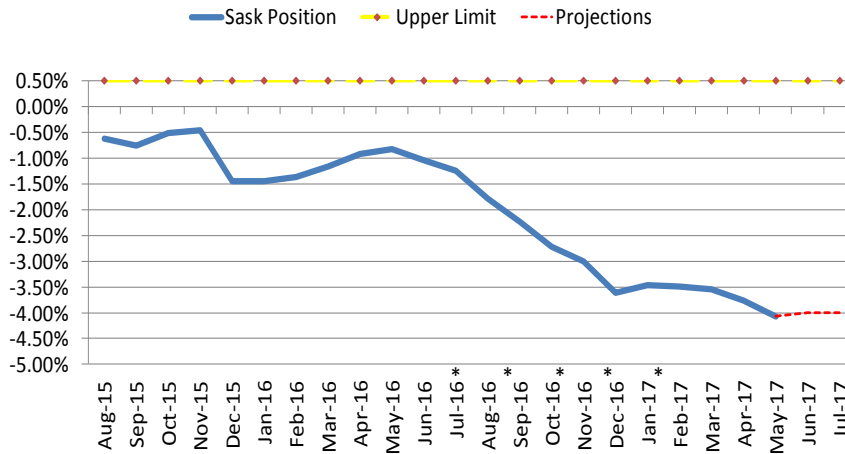
(9) Total Monthly CDC Quota Allocation for the previous 12 months

\*SK is below -1.50% and will not be assessed a penalty. The CMSMC motion July, 28, 2016, has waived any pool level penalties **until July 2017**.

## PROVINCIAL WEIGHTED AVERAGES



## SK Milk Production



\*SK is below -1.50% and will not be assessed a penalty. The CMSMC motion July, 28, 2016, has waived any pool level penalties until July 2017.



1

# Water4Dairy

## OZONE WATER SYSTEMS

### Chemical Free Water Treatment Systems



780-999-1906 - [info@water4dairy.com](mailto:info@water4dairy.com) - [water4dairy.com](http://water4dairy.com)

Over 99% elimination of arsenic, bacteria, viruses, iron, manganese, coliforms, E-coli, cycts, sulphur (H2S), giardia, crypto, chemicals, medications, algae, taste & more.

# Code of Practice

## 5.2 Loading and Receiving

When loading cattle, shippers should defer to the expertise of the driver who has a general understanding of allowable weight and loading density allowable on each part of the trailer.

Drivers are also aware of variations between provincial/state requirements. Commercial vehicles must comply with provincial and state gross vehicle loading limits (e.g., the total weight of the tractor, trailer, and load).

Round crowd pens and curved single file chutes work better than straight ones. Curved cattle chutes are better for handling cattle because they take advantage of the natural tendency of cattle to go back to where they came from (79).

### **REQUIREMENTS**

***Electric cattle prods must only be used in extreme situations, such as when animal or human safety is at risk, and must never be used on the face, anus or reproductive organs of dairy cattle.***

***Electric prods must not be used on calves that can be moved manually.***

***The requirements for loading and unloading procedures and equipment as described in the Health of Animals Regulations must be complied with.<sup>2</sup>***

***Ensure cattle that are incompatible are segregated.***

### **RECOMMENDED BEST PRACTICES**

- a. ensure animal handlers are trained in proper loading and unloading practices
- b. ensure roads and loading areas are accessible in all kinds of weather
- c. ensure loading facilities:
  - have curved chutes with solid sides
  - are uniform in color and texture
  - are uniformly illuminated (avoid sharp contrasts and shadows)
- d. ensure ramps are designed to prevent slipping and falling and are free of protrusions or sharp objects
- e. move cattle in small groups
- f. load cattle calmly and quietly (do not yell or whistle)
- g. know how to determine proper loading densities in order to provide more accurate information to transporters when arranging for transport (refer to Transportation Code of Practice) (76).

<sup>2</sup> The Health of Animals Regulations prohibit loading or unloading an animal in a way likely to cause injury or undue suffering. The Regulations also require that ramps, chutes and other equipment used for loading and unloading animals:

- be maintained and used so as not to cause injury or undue suffering to animals,
- have sides of sufficient strength and height to prevent animals from falling off the ramp or other equipment, and
- have no unprotected gap between the ramp and the vehicle



### **If You Can't Ship It - Test It!**

**BSE surveillance is still important and every animal tested makes a difference.**

**Support your cattle industry by having your 4-D (dead, diseased, dying or downer) cattle tested for BSE.**

**For more information, call the Canadian Food Inspection Agency at 1-877-727-5273.**

## INHIBITOR TEST STATIONS

SaskMilk has established a number of inhibitor test stations around the province. Producers needing to check their bulk tanks for inhibitors can take a sample to the test station closest to their location.

The test stations have the Charm Trio test strips available for testing.

The Charm Trio test is the test that the plant uses. It tests for the following drugs:

Beta-lactam Drug	Detection Level <sup>†</sup> (ppb*)	US Safe Level or Tolerance / Canadian MRL (ppb*)	Sulfa Drug	Detection Level <sup>†</sup> (ppb*)	US Safe Level or Tolerance / Canadian MRL (ppb*)
Amoxicillin	3.1	10 / None	Sulfadimethoxine	4.7	10 / 10 <sup>∞</sup>
Ampicillin	7.7	10 / 10	Sulfamethazine	7.7	10 / 10 <sup>∞</sup>
Ceftiofur and Metabolites <sup>^</sup>	53	100 / 100	<b>Tetracycline Drug</b>	<b>Detection Level<sup>†</sup> (ppb*)</b>	<b>US Safe Level/Tolerance / Canadian MRL (ppb*)</b>
Cephapirin	14	20 / 20	Chlortetracycline	54	300 / 100
Cloxacillin	7.4	10 / None	Oxytetracycline	66	300 / 100
Penicillin G	2.2	5 / 6 <sup>*</sup>	Tetracycline	21	300 / 100

† Positive at least 90% of the time with 95% confidence.

\* parts per billion or ng/mL

<sup>^</sup> Ceftiofur parent drug sensitivity is approximately 1/2 that reported in the table.

<sup>&</sup> Canadian MRL for penicillin G is 0.01 IU/ml, equivalent to 6 ppb.

<sup>∞</sup> Canadian MRL for sulfa drugs are singly or in combination with other MRL listed sulfonamides.

Test stations are located at the following locations:

1. Swift Current, SK - Agrifoods truck bay - 675 Cheadle Street West  
Office 306-773-1097 or Rodger Ruf 306-741-3261
2. Harris, SK - Cairns Farm – Wes Cairns 306-656-4807
3. Star City, SK - Star City Colony - Reuben Tschetter 306-921-9381
4. Grenfell, SK - Jim Ross 306-697-2232
5. Yorkton, SK - Ford Dairy Farms Inc. - Bud and Margaret Ford 306-782-7240
6. Saskatoon, SK – Agrifoods Truck Bay - east of the Saputo plant receiving bay  
lead hand – Mike V. or Mike K. 306-664-0202 after hours: 306-668-8135

Charm tests strips and Charm testers are now available for purchase through SaskMilk. Agrifoods is now carrying SNAP test kits for tetracyclines as well as beta lactams.

For further information you can contact: Deb Haupstein 306-721-9486

## QUOTA LISTING or CLASSIFIED AD SERVICE

SaskMilk offers a free quota listing service as part of its Newsletter. Anyone wishing to sell or purchase quota and/or cows or miscellaneous dairy equipment is welcome to contact the SaskMilk office at (306) 949-6999. All prices and negotiations will be independent of SaskMilk. **Please note that ads will be posted in two issues and will then be removed unless SaskMilk is notified otherwise.**

### Classifieds

For sale: Delaval 10 hp vacuum pump \$2500; Delaval transponders. More info call **Henk 306-281-8258.**

For Sale: 18 Bred Holstein Heifers to start calving in September  
First 9 are bred to sexed semen  
Call **Clayton 306-795-2902**  
**(house) evenings or 306-795-7902**  
**(cell) daytime.**

## SASKMILK BOARD OF DIRECTORS

Melvin Foth – Chair  
(306) 225-4678  
[fvl@sasktel.net](mailto:fvl@sasktel.net)

Brad Kornelius – Vice Chair  
(306) 260-4904  
[bradkornelius@gmail.com](mailto:bradkornelius@gmail.com)

Denise Coghill  
(306) 699-7764  
[denmars@sasktel.net](mailto:denmars@sasktel.net)

Ryan Enns  
(306) 220-7993  
[corandryan@gmail.com](mailto:corandryan@gmail.com)

Jack Ford  
(306) 328-4700  
[jackford@sasktel.net](mailto:jackford@sasktel.net)

Brian Lindenbach  
(306) 771-2721  
[broyhill192@gmail.com](mailto:broyhill192@gmail.com)

Tom MacKenzie  
(306) 352-2292  
[tommymilk@icloud.com](mailto:tommymilk@icloud.com)

Blaine McLeod  
(306) 631-8053  
[rb.mcleod@sasktel.net](mailto:rb.mcleod@sasktel.net)

Leonard Wipf  
(306) 491-0432  
[leonard.countryclover@gmail.com](mailto:leonard.countryclover@gmail.com)

For further information, please contact the SaskMilk office.

444 McLeod Street  
Regina, Saskatchewan S4N 4Y1  
Telephone: (306) 949-6999  
Fax: (306) 949-2605  
Website: [www.saskmilk.ca](http://www.saskmilk.ca)  
Email: [info@saskmilk.ca](mailto:info@saskmilk.ca)