

Chair's Message

In this Issue:

Milk Quality Bonus ..3
Quota Exchange.....6
Production.....9
SCC.....10
Best Practices.....12
Classifieds.....14
Directors14

Water Quality

This morning everything is covered by a layer of frost on the 14th of May and that has been the case for most mornings this past week. Hopefully things warm up soon and we get off to a good growing season. I want to wish all our producers the best as you put seed in the ground and go through these very busy times. This is the time when we start the process of getting our feed supply for next year, and paying attention to details and getting the crop off to a right start makes a difference in feed quality and quantity although we recognize that the weather plays a major part as well.

On behalf of Sask Milk I want to thank everyone who attended our spring producer meetings, there was a good turnout and also good exchange and interaction at these meetings. This is the time we as a board come to dialogue with, and listen to, our producers. There was a good exchange of ideas and perspectives at our April meetings and the board will always look for ways to add to the effectiveness of our meetings. I would also encourage those who did not attend to try to participate in this manner with us in the future.

The board is always pleased when we can announce a quota increase as we did a couple of weeks ago (along with another incentive day). This ongoing growth is good news for us to be able to deliver to our Government and industry as a whole. The challenge we have is on the blend price side; along with the strong demand for butter comes the issue of dealing with a growing surplus of SNF. I want to encourage producers to work toward filling your quota with a high quality milk, because when this happens we are fulfilling our responsibility and we help protect our dairy industry. I want to remind everyone who is not registered on CQM to be diligent in getting this started and done before the end of the year.

I would like to address water quality. As I understand, many farms are struggling to meet the water test requirements of zero, zero for E.coli and Total coliforms on our milk house water. I would like to share what we have done on our farm to address these challenges.

Chair's Message – Water Quality Cont'd

We use river water pumped into a reservoir and have not had quality issues until this winter with high coliform counts. We were already chlorinating the water, but chlorine at low levels did not make a difference. We chose to try a UV light treatment system which does not add anything to the water. As I understand, this may not work well for well water with high mineral content (and well water would have to have all the iron removed for this system to work), but this system is probably good for water from rivers or dugouts. For the UV light to treat the water, there needs to be a sediment filter to take out all the sediment.

This treatment system was purchased through our local electrician, Unger Electric, and was supplied by Eecol Electric. We had to supply a water sample and an estimate of water volume to be used, and in our case they sized it for the complete milking herd and all the milk house water as well as for residential use. The unit we have is a “Pora, model GENH5” which is sized correctly for our operation. The sticker on this unit after the name and model number gives the following company name and phone number. Canature NorthAmerica LTD, 655 Park St. Regina SK. PH- 877-444-3348. Our unit includes two filter units so if one plugs there is a spare to switch to as well as an hour meter, a flow meter, and the UV light unit. The bulb is good for 9000 hours. This system has taken a high Total coliform count and reduced it to zero. The total cost with installation was around \$4500. We use about 2 filters a month at \$25 per filter; I do not yet have a replacement cost for the bulb. The following picture show the unit with the two blue filter units. In the middle of the filters is the hour meter and then on the right the UV unit with the bulb pulled out a little. This is just one of the options in dealing with the challenges of water quality.

-Mel Foth



CQM Milk Quality Bonus

For the month of April, CQM registered producers received a \$0.50 per hectolitre milk quality bonus.

CQM REGISTRATION

All producers in the provinces must be registered on the CQM program by the end of 2015.

To apply for registration, producers should have three months of records.

What records do you need to do on a daily/regular basis?

- **Record 12 Bulk tank temperature log-** you should be recording the temperature of the bulk tank at the end of each milking
- **Record 10 Livestock treatment record-** all livestock treatments that have a milk or meat withdrawal must be recorded.
- **Record 13 Milking equipment sanitation record-** on at least a monthly basis you should be checking the sanitation of your bulk tank and milking equipment and recording the findings. The temperature of the rinse water should be checked and recorded weekly or the temperature of the wash water should be recorded monthly.
- **Record 17 Deviations and corrective actions-** record the problem and what you did to correct it. This can be done on the record that the problem relates to or on Record 17 Deviation and Corrective Action record i.e. Bulk tank temperature problems can be recorded on Record 12 in the corrective action column or on Record 17

What do you need to do on an annual basis?

- Cleaning and sanitizing chart- filled out by your equipment dealer
- Annual wash system evaluation- filled out by your equipment dealer
- Water record – tested annually for E. coli and Total coliforms and kept on file.

What record do you need to do on an as needed basis?

- Broken needle record- you may never have a broken needle but you must be aware that should it ever occur you must have a record of the animal and the location of the needle and that record should go with the animal when it leaves the farm.

Producers are also required to have:

Standard Operating Procedures:

- Pre-milking
- Milking
- Milking cattle with abnormal or treated milk
- Post milking cleaning
- Treating cattle
- Shipping cattle
- Feeding medicated feed

Corrective Action Plans

- Corrective action plans outline the steps to take to correct a problem. Corrective Action plans should contain detailed instructions and contact numbers and the CQM program requires producers to write a Corrective Action plan for specific scenarios.

Records can be kept on computer and there are a number of software programs that have been adapted to include CQM record keeping requirements.

These Software Programs contain ALL of the CQM record keeping requirements:

1. VAMPP: www.vampp.com
2. Dairy Comp Scout/305 program with the Canadian Quality Milk module, released with the January 2007 annual update: www.canwestdhi.com/dairycomp.htm
3. SigaDairy Farm Software: www.siga.net
4. Dairy Plan C21 version 5.240 with the new 5.240 Canadian language file: www.westfalia.com
5. Lac-T: www.lac-t.com (Note: Lac-T is replacing SigaDairy Farm Software and SD@HR).
6. CQM Logger, Version 62: www.cqmlogger.ca
7. VetCheck, Version 5.2 or greater: www.vcidairy.com
8. SmartDairy® HerdMetrix™, Version 4.0 or greater: www.mysmartdairy.com
9. BouMatic Robotics' HerdMetrix, Version number: 4.1 or greater: www.uniform-agri.com
10. UNIFORM, Version number: 4.1 or greater: www.uniform-agri.com
11. Insentac's SATURNUS 20.20, Version number 4.1 or greater: www.insentec.eu
12. SAC's TIM (Total Integrated Milking), Version number: 4.1 or greater: www.sac.eu

Some Software Programs contain **SOME** of the CQM record keeping requirements:

1. DS@HR Inc meets requirements for Records 9, 10 and 11: www.dsahr.ca
2. T4C: Time for Cows, Version 3.2.9.28 or greater, meets requirements for Records 1 to 7, 9, 10 and 11: www.lely.com

Information on all of this is in the CQM workbook and reference manual. If you have questions, need some help getting ready for your validation, or want to apply for CQM registration please contact Deb Haupstein deb.haupstein@saskmilk.ca 306-721-9486

Save the Date!

2015 Ag Excellence Conference ('Ag Ex')
Regina, November 25 – 27

Focused on business management in farming, Ag Ex's topics range from HR to succession planning to Big Data. The regular host of plenaries and workshops is mixed with some roundtable discussion, an industry showcase and plenty of networking.

Saskatchewan Spring Ski Camp



Raymore School Track & Field Club



Lloydminster Ag-Ed Showcase

QUOTA EXCHANGE

The market-clearing price established for the May 2015 Quota Exchange was **\$28,250.00**

The next Quota Exchange will be held on **June 15, 2015**. All offers to sell and bids to purchase quota through the Quota Exchange must be received at the SaskMilk office by midnight, **June 6, 2015**. SaskMilk recommends that offers and bids be submitted well in advance of the deadline date to ensure adequate time for corrections, if necessary.

When making bids on the Quota Exchange, the price on offers to sell quota is the minimum price that the producer is prepared to accept for that quota. Only if the market-clearing price is equal to or greater than the producer's minimum price will that producer qualify for participation in the Exchange. Conversely, the price on offers to purchase quota is the maximum price that the producer is prepared to pay for that quota. Only if the market-clearing price is equal to or less than the producer's maximum price will that producer qualify for participation in the Exchange. The clearing price is set at the price where the smallest difference exists between the accumulated volume offered for sale and the accumulated volume bid to purchase.

The results of the Quota Exchange are outlined in the following Table.

MAY 2015 QUOTA EXCHANGE RESULTS SUMMARY

Market Clearing Price per kilogram of butterfat	\$ 28,250.00
Daily Kilograms offered to Purchase	14.40
Kilograms offered to Sell	39.85
Kilograms sold	9.00
Number of Producers	
- offered to purchase	2
- purchased quota	2
- offered to sell	5
- sold quota	1

MAY 2015 QUOTA EXCHANGE CLEARING PRICE RESULTS

Price (\$/daily kg b.f.)	No. of Sellers	Cumulative Sellers	Daily Kgs b.f. offered for sale	Cumulative sales	Cumulative Sales less Cumulative purchases	Cumulative purchases	Daily Kgs b.f. offered to purchase	Cumulative bidders	No. of buyers
\$28,250.00	1	1	9.00	9.00	-5.40	14.40	0.00	2	0
\$28,800.00	1	2	12.85	21.85	7.45	14.40	0.00	2	0
\$29,000.00	2	4	8.00	29.85	15.45	14.40	13.00	2	1
\$30,000.00	0	4	0.00	29.85	28.45	1.40	1.40	1	1
\$32,000.00	0	4	0.00	29.85	29.85	0.00	0.00	0	0

*** Please contact Bev Solie at 306-949-6999 for inquiries dealing with quota management sheets, the Quota Exchange, for transfer credits, or with any other quota transactions.**

TRANSFER CREDIT SUMMARY REPORT

MONTH	# OF PRODUCERS TRANSFER IN	# OF PRODUCERS TRANSFER OUT	TOTAL KGS BUTTERFAT
April	16	12	11,722
May	15	12	12,618
June	10	8	7,204
July	15	12	13,322
August	15	12	11,915
September	19	18	23,202
October	10	10	10,988
November	12	10	13,140
December	19	12	20,889
January, 2015	23	19	19,605
February	20	15	20,251
March	18	15	14,470
April	25	14	26,975

PRIVATE TRANSFERS PROCESSED

MONTH	DAILY KILOGRAMS
May	145.23
June	18.50
July	20.00
Aug	615.73
Sept	336.41
Oct	12.71
Nov	24.35
Dec	11.00
Jan-2015	0.00
Feb	959
Mar	17.00
Apr	72.79

OVER QUOTA (OVER 5 DAYS) REPORT BY MONTH

MONTH	# OF PRODUCERS	KGS BUTTERFAT
April	20	4,163
May	13	1,411
June	15	1,791
July	11	1,266
August	3	354
September	2	102
October	3	32
November	5	403
December	6	767
January, 2015	7	2,739
February	9	3,272
March	13	2,999
April	8	578

SUMMARY REPORT OF CREDITS April, 2015 – 163 PRODUCERS

DAYS	# OF PRODUCERS	POSITIVE CREDITS ACCUMULATED (KGS OF BUTTERFAT)
+ 5	8	3,589
0 to + 5	33	12,519
TOTAL	41	16,108
DAYS	# OF PRODUCERS	NEGATIVE CREDITS ACCUMULATED (KGS OF BUTTERFAT)
-15	8	-11,523
-10 to -15	28	-58,278
-5 to -10	39	-47,610
0 to -5	47	-22,727
TOTAL	122	-140,138

LOST OPPORTUNITY REPORT

MONTH	# OF PRODUCERS	LOST OPPORTUNITY (KGS OF BUTTERFAT)
April	7	1,104
May	10	1,792
June	5	2,823
July	9	3,717
August	17	7,315
September	16	3,722
October	16	8,971
November	13	3,774
December	19	6,444
January, 2015	18	7,440
February	11	3,569
March	8	3,596
April	8	3,561

WEIGHTED AVERAGE COMPONENT TESTS & PRICES April, 2015

Components	Average Test	Price per kilogram Class 1 to 5
Butterfat	4.0384	10.867000
Protein	3.3281	7.866878
Other Solids	5.7136	1.145597

Based on the average component tests for the province, the average price received was **\$76.6129** per hectolitre. **The average butterfat price received per kilogram was \$18.96**

SASKATCHEWAN MILK POOL RESULTS April 2015

Milk Sale Revenue	\$ 14,069,557.33
Western Milk Pool	\$ 1,254,897.98
Plant of Last Resort Service	\$ (55,393.56)
Total Pool Value	\$ 15,269,061.75

In April, Saskatchewan had a monthly CDC allocation of **801,582 kilograms** of butterfat. In the month of April, Saskatchewan production was **2,984** of butterfat **over** and cumulatively **under** by **-88,060 kilograms** of butterfat. On a percentage basis, Saskatchewan is **-0.92%** within our CDC allocation flexibility limits based on the Continuous Quota model. The -1.50% lower flexibility limit is in effect.

	(1) Monthly Total Production Kgs bf	(2) Total Monthly CDC Quota Allocation Kgs bf	(3) Monthly Over or (Under) Production Kgs bf col. 1 – 2 = 3	(4) Lower Flexibility Limit (1.5%) Kgs bf col. 9 * -1.5%	(5) Upper Flexibility Limit 1.0% Kgs bf col. 9 *1.0%	(6) Cumulative Over or (Under) Production with limits Kgs bf	(7) Cumulative Over or (Under) Production with limits in - % col. 6 / 9	(8) Over Quota or (Lost Production Opportunity) Kgs bf	(9) Rolling 12 Month Total Quota Kgs bf
Apr-14	759,580	765,873	(6,293)	(136,382)	45,461	(64,773)	-0.71%	0	9,092,104
May-14	794,737	781,223	13,514	(136,885)	45,628	(57,303)	-0.63%	0	9,125,672
Jun-14	761,220	759,569	1,651	(137,511)	45,837	(58,840)	-0.64%	0	9,167,373
Jul-14	770,028	768,975	1,053	(138,077)	46,026	(57,522)	-0.62%	0	9,205,114
Aug-14	755,864	775,617	(19,753)	(138,628)	46,209	(86,128)	-0.93%	0	9,241,841
Sept-14	757,014	785,984	(28,970)	(139,355)	46,452	(115,663)	-1.24%	0	9,290,311
Oct-14	784,475	837,039	(52,564)	(139,977)	46,659	(139,977)	-1.50%	(29,529)	9,331,833
Nov-14	777,547	806,726	(29,179)	(140,477)	46,826	(140,477)	-1.50%	(28,634)	9,365,141
Dec-14	811,818	846,968	(35,150)	(140,987)	46,996	(140,987)	-1.50%	(34,624)	9,399,124
Jan-15	826,269	806,291	19,978	(141,417)	47,139	(120,978)	-1.28%	0	9,427,790
Feb-15	759,351	747,742	11,609	(142,029)	47,343	(111,877)	-1.18%	0	9,468,575
Mar-15	832,187	817,238	14,949	(142,679)	47,560	(94,301)	-0.99%	0	9,511,947
Apr-15	804,566	801,582	2,984	(143,119)	47,706	(88,060)	-0.92%	0	9,541,277

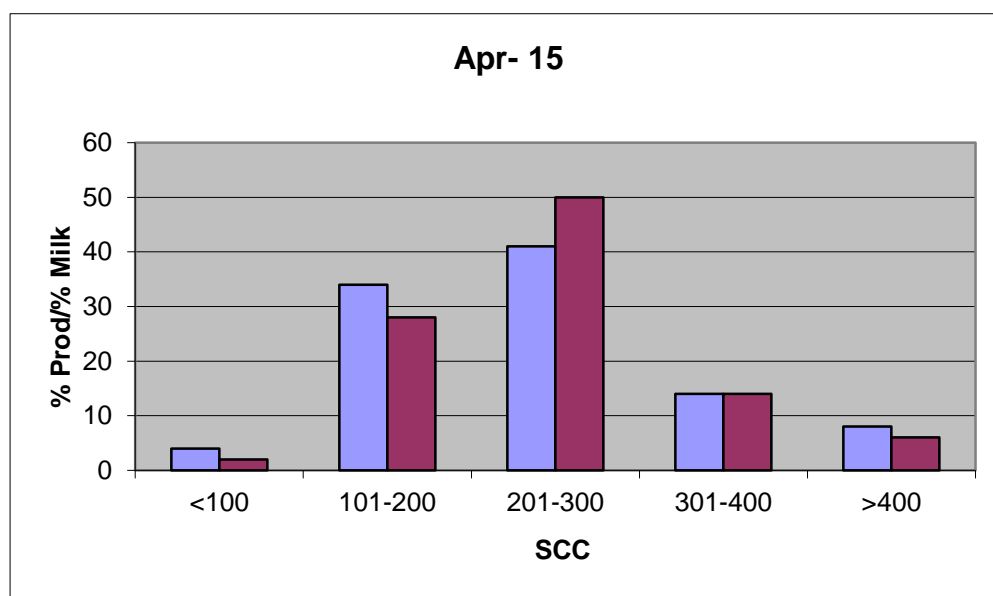
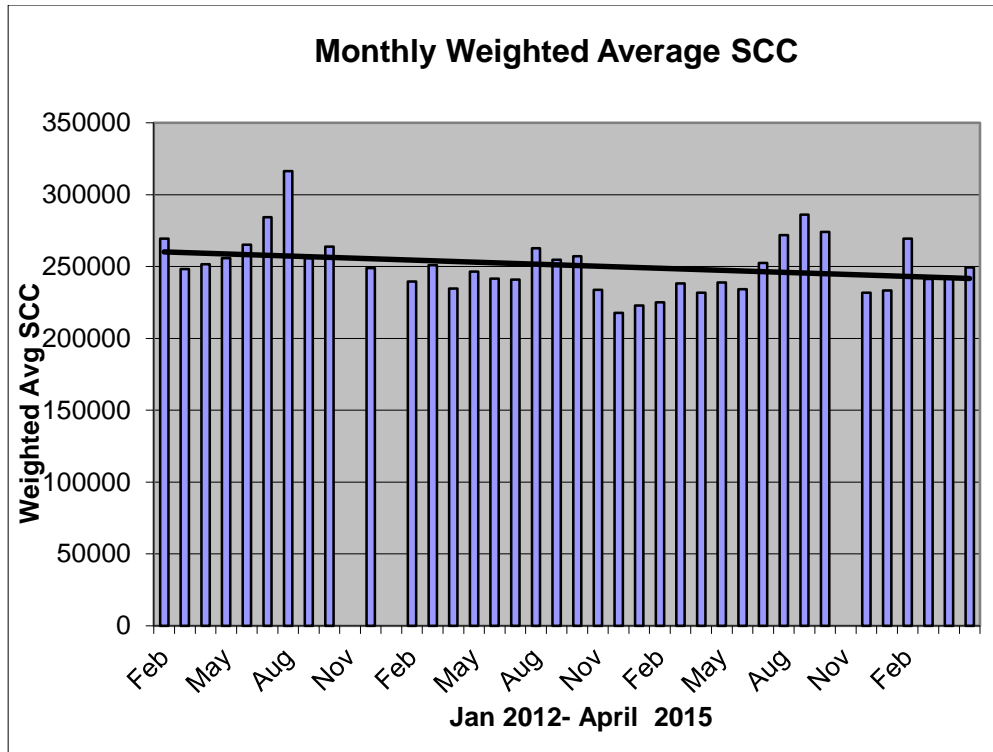
- (1) Monthly Production in Saskatchewan
- (2) Total Monthly Quota = Class 1 sales + Monthly MSQ + Carry Forward
- (3) Difference between the monthly production (1) and the total monthly quota (2)
- (4) The Lower Flexibility Limit is -1.5% of Rolling 12 Month Total Quota (9)
- (5) The Upper Flexibility Limit is 1.0% of Rolling 12 Month Total Quota (9)
- (6) Previous Month Cumulative Over or (Under) Production + Current Monthly Over or (Under) Production (capped at lower or upper limit if applicable)
- (7) Equal to Column (6) expressed as a percentage basis within the flexibility limits
- (8) Over Quota or (Lost production opportunity) outside of flexibility limits
- (9) Total Monthly CDC Quota Allocation for the previous 12 months

SCC LIMIT NOW 400,000

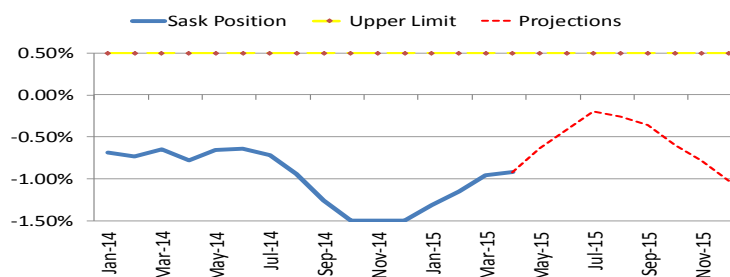
Effective January 1, 2013, the SCC limit has changed to 400,000. Penalties and violations will be applied based on the new limit.

The following graphs provide producers with an overview of the Provincial Somatic Cell Count weighted average on a monthly basis as well as a breakdown of the % of producers in each SCC level for the month of April 2015.

If you have any questions or comments you can contact: Deb Haupstein at 306-721-9486.



SK Milk Production



INHIBITOR TEST STATIONS

SaskMilk has established a number of inhibitor test stations around the province. Producers needing to check their bulk tanks for inhibitors can take a sample to the test station closest to their location.

Charm test strips are available to test for:

Beta-Lactams- the Charm 3 SL3 Beta Lactam test strip tests for amoxicillin, ampicillin, ceftiofur, cephalixin, cloxacillin, and penicillin G

Tetracyclines- the Charm Tetracycline test strip tests for chlortetracycline, oxytetracycline and tetracycline.

Sulfas- the Charm Sulfa test strip tests for sulfacetamide, sulfachlorpyridazine, sulfadiazine, sulfadimethoxine, sulfadoxine, sulfaethoxypyridazine, sulfamerazine, sulfamethazine, sulfamethizole, sulfamethoxazole, sulfamethoxypyridazine, sulfapyridine, sulfaquinoxaline, sulfathiazole, and sulfisoxazole.

Test stations are located at the following locations:

1. Swift Current, SK - Agrifoods truck bay - 675 Cheadle Street West
Office 306-773-1097 or Rodger Ruf 306-741-3261
2. Harris, SK - Cairns Farm - Wes Cairns 306-665-4807
3. Star City, SK - Star City Colony - Reuben Tschetter 306-921-9381
4. Grenfell, SK - Jim Ross 306-697-2232
5. Yorkton, SK - Ford Dairy Farms Inc. - Bud and Margaret Ford 306-782-7240
6. Saskatoon, SK - Agrifoods Truck Bay - east of the Saputo plant receiving bay
lead hand - Jim or Clint 306-664-0202 after hours: 306-668-8135

Charm test strips and Charm testers are now available for purchase through SaskMilk. Agrifoods is now carrying SNAP test kits for tetracyclines as well as beta lactams.

For further information you can contact: Deb Hauptstein 306-721-9486

Code of Practice

2.2.2 Heifers

The nutritional management of dairy heifers requires a systematic approach to meet growth targets (34). Nutrition and growth rate affect age of first calving and lifetime productivity (26).

REQUIREMENTS

Heifers must receive a ration that is adequate for maintaining health, growth and vigor.

RECOMMENDED BEST PRACTICES

- a. test nutrient content of feed ingredients used
- b. ensure all rations have been balanced.

2.2.3 Dry Cows

Dry cows require changing levels of nutrients for maintenance and growth of the fetus. Rumen dynamics also change as cows move from a high concentrate diet during lactation to a high fiber diet early in the dry period, and then back to a high concentrate diet post-calving. A sudden introduction of grain post-calving can predispose cows to ruminal acidosis (28).

A well balanced diet during the dry period (including trace minerals and vitamin supplementation) has been shown to minimize the incidence of diseases and metabolic disorders that can occur as cows transition from pregnancy to lactation (33).

The National Research Council (NRC) guidelines for dairy cattle provide separate nutrient guidelines for far-off dry cows and pre-fresh transition cows, recognizing the nutritional changes that accompany these periods. Unique diets for these periods should “reduce the risk of metabolic disorders during early lactation and improve lactation performance” (29).

REQUIREMENTS

Dry cows must receive a ration that is adequate for maintaining health and vigor.

RECOMMENDED BEST PRACTICES

- a. test nutrient content of feed ingredients used
- b. ensure all rations have been balanced
- c. feed diets high in forage to reduce the risk of sub-acute and acute ruminal acidosis
- d. reduce the risk of sub-acute ruminal acidosis from high concentrate diets by ensuring the diet contains sufficient coarse fiber, by feeding total mixed rations.



If You Can't Ship It - Test It!

BSE surveillance is still important and every animal tested makes a difference.

Support your cattle industry by having your 4-D (dead, diseased, dying or downer) cattle tested for BSE.

For more information, call the Canadian Food Inspection Agency at 1-877-727-5273.



Across Canada, women and girls from all walks of life, at all skill levels, enthusiastically reach for their goals through sport. To achieve. To improve. And for some, to simply have fun. As champions of healthy living, providing nutrition and playing an active role in our communities, our mission is to see that no hurdle exists that might hinder this passion for the game. **We want to see more goals met, more greatness realized, and the benefits of sports universally enjoyed.**



Reminder!

The deadline date for Quota Transfer and the Quota Exchange is the 6th of each month

Your Quota Transfer Application must be received on or before the 6th of the month in order to be effective the 1st of the following month

Quota Exchange forms must be received in the SaskMilk office on or before the 6th of the month for that month's Exchange

If you have any questions please contact Bev Solie at #306-721-9488

QUOTA LISTING or CLASSIFIED AD SERVICE

SaskMilk offers a free quota listing service as part of its Newsletter. Anyone wishing to sell or purchase quota and/or cows or miscellaneous dairy equipment is welcome to contact the SaskMilk office at (306) 949-6999. All prices and negotiations will be independent of SaskMilk. **Please note that ads will be posted in two issues and will then be removed unless SaskMilk is notified otherwise.**

Classifieds

For Sale: Fresh Holstein heifers
Call Paul at #780-842-6508

Lemar Farms Inc. Custom liquid manure hauling. **Call George Janzen 306-227-5757**

For Sale: 1 Digi Star 2400 EZ Scale Head, 2 Digi Star 2400 VRD Remotes, and 2 Clickers. **Call 306-882-3112 ext. 401**

SASKMILK BOARD OF DIRECTORS

Melvin Foth – Chair
(306) 225-4678
fvl@sasktel.net

Brad Kornelius – Vice Chair
(306) 239-4200
bradkornelius@gmail.com

David Entz
(306) 626-3300
davidentz3662@gmail.com

Jack Ford
(306) 328-4700
jackford@sasktel.net

Isaac Klassen
(306) 249-4435
isaac00@sasktel.net

Brian Lindenbach
(306) 771-2721
broyhill192@gmail.com

Ryan Enns
(306) 220-7993
corandryan@gmail.com

Tom Mackenzie
(306) 352-2292
tommymilk@icloud.com

Denise Coghill
(306) 699-2539
denmars@sasktel.net

For further information, please contact the SaskMilk office.
444 McLeod Street
Regina, Saskatchewan S4N 4Y1
Telephone: (306) 949-6999
Fax: (306) 949-2605
Website: www.saskmilk.ca
Email: info@saskmilk.ca