

SaskMilk in the Community!

In this Issue:

CQM Registration.....	2
Research Report.....	3
Quota Exchange.....	6
Production.....	9
SCC.....	10
Spring Meetings.....	12
Best Practices.....	13
Classifieds.....	14
Directors	14

Saskatoon
Fencing
Club's
'Family in
Motion
Day' open
house!



St. Peter School milk sellers!



Hosting
brunch at
Rogers'
Hometown
Hockey event!

CQM REGISTRATION

All producers in the provinces must be registered on the CQM program by the end of 2015.

Producers new to the program must have completed three months of records before they can apply for registration.

What records do you need to do on a daily/regular basis?

- Record 12 Bulk tank temperature log- you should be recording the temperature of the bulk tank at the end of each milking
- Record 10 Livestock treatment record- all livestock treatments that have a milk or meat withdrawal must be recorded
- Record 13 Milking equipment sanitation record- on at least a monthly basis you should be checking the sanitation level of your bulk tank and milking equipment and recording the findings. The temperature of the rinse water should be checked and recorded weekly or the temperature of the wash water should be recorded monthly.
- Deviations and corrective actions- record the problem and what you did to correct it. This can be done on the record that the problem relates to or on Record 17 Deviation and Corrective Action record ie. Bulk tank temperature problems can be recorded on Record 12 in the corrective action column or on Record 17

What do you need to do on an annual basis?

- Cleaning and sanitizing chart- filled out by your equipment dealer
- Annual wash system evaluation- filled out by your equipment dealer
- Water record – tested annually and kept on file.

What record do you need to do on an as needed basis?

- Broken needle record- you may never have a broken needle but you must be aware that should it ever occur you must have a record of the animal and the location of the needle and that record should go with the animal when it leaves the farm.

Producers are also required to have:

Standard Operating Procedures:

- Pre-milking
- Milking
- Milking cattle with abnormal or treated milk
- Post milking cleaning
- Treating cattle
- Shipping cattle
- Feeding medicated feed

Corrective Action Plans

- Corrective action plans outline the steps to take to correct a problem. Corrective Action plans should contain detailed instructions and contact numbers and the CQM program requires producers to write a Corrective Action plan for specific scenarios.

Information on all of this is in the CQM workbook and reference manual. If you have questions, need some help getting ready for your validation, or want to apply for CQM registration please contact Deb Haupstein deb.haupstein@saskmilk.ca 306-721-9486

Research Report

The weather is certainly a lot more enjoyable than it has been for the last couple of months! It is actually looking like spring might come so we can all go back to work in the fields preparing for next winter.

I would like to thank all those people who were able to attend the Dairy Info Day last January 30th, we ended up with a very good attendance. The presenters did a great job with their presentations and provided everyone with a lot of very useful information. All of the presentations are available online via the SaskMilk website for those of you who were unable to attend. We were fortunate to have several guests in attendance representing government, Agriculture Development Fund and several commodity partners. It must be pointed out that your engagement and comments did not go unnoticed by our guests, many of them commented how our industry is truly driven from the ground up by our members, it is your involvement that helps SaskMilk and our partners receive the research funds that we do! The comment sheets that were filled out by everyone in attendance will definitely be taken into consideration in helping to set future research direction.

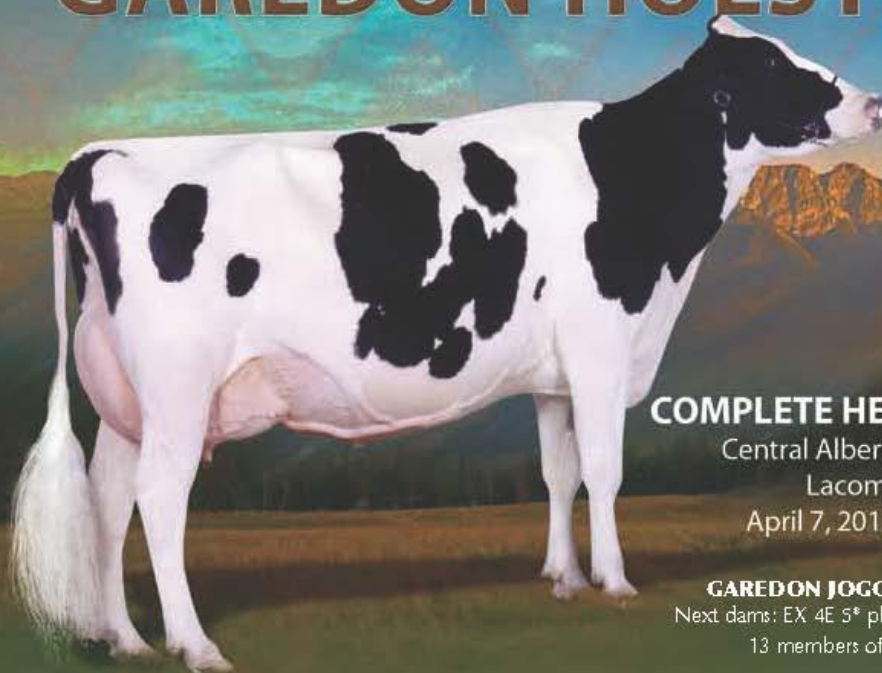
On March 13th, the Animal and Poultry Science Department held their annual “mini-conference”; 40 students gave presentations and 9 of them were directly related to Dairy. Our members’ foresight in funding the Rayner Centre continues to attract worldwide interest and as a result, it attracts highly qualified faculty who in turn attract greater student interest. Isaac Klassen presented the SaskMilk scholarship to this year’s recipient, Karen Scott, congratulations Karen from the entire SaskMilk membership!

I hope you all have a great spring and are able to get your crops off to a good start!

- Jack Ford



GAREDON HOLSTEINS



COMPLETE HERD DISPERSAL

Central Alberta AG Pavilion

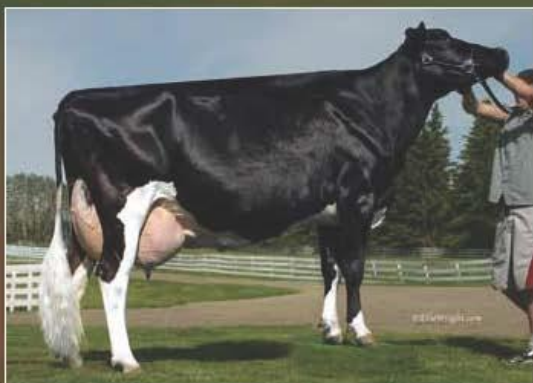
Lacombe, AB

April 7, 2015 - 12:00pm

GAREDON JOGGER DARLA EX 2E

Next dams: EX 4E 5* plus next 5 of 6 dams VG

13 members of this family sell!



WENDON GIBSON PRUDENCE EX-92 5E 4*

Next dams: EX 2E 3*, EX 2E 4* plus 3 more VG dams

Her daughter Wendon Goldwyn Prude VG-87 sells!



NORTHERN GLO MACINTOSH RED EX-90 8*

HM All-American R&W Junior 2yr Old 2004

Next 3 dams VG

Her daughter VG Shottle daughter plus granddaughters by
Lego, Chipper P & Adonis (R&W) sell!

145 Head

30 R&W/R&W Carriers

70 milking & dry cows

75 young stock - baby calves to springers

30 open heifers - Leucosis tested

100% Classified GP or better

4 EX, 31 VG, 32 GP (will be classified prior to sale)

DHI: 33kg SCC 77

Sires used: Impression, McCutchen, Gold Chip,

Doorman, Snowy, Adonis-Red & Red Neck

Sale Managed by:

Andrew Wildeboer 403-348-9358 &

Harry Makkinga 403-783-1274

For Catalogs call:

Don Wright: 403-556-0842 Rod York: 306-873-7428

Don or Logan Chalack: 403-227-2142



proAction®

Upcoming proAction webinars: Pencil in March 24 and April 15 in your calendars!

The proAction initiative – a game changer for dairy farmers?

You have questions about proAction? Why do this? What's in it for me? Do our customers really need that reassurance? Who is involved in developing this? Join David Wiens on March 24, 2015 for a discussion of the proAction initiative in the Canadian dairy sector to hear about the plan, its premise, and for a chance to ask your questions.

Agriwebinar®

Information at your fingertips.

The webinar will be hosted by Farm Management Canada (FMC) on **March 24, at noon** (EDS).

- Visit FMC's website for more info: www.fmc-gac.com
- To know more about the next agriwebinars, go to agriwebinar.com

Animal Care Assessment - Hear About it in April

Another webinar will be dedicated to the specific topic of animal care assessment, and the recent pilot project on farms, on **April 15, at noon** (EDS).

As the webinars are delivered via Farm Management Canada, it is open to anyone in agriculture, academic, food business, etc who is interested in knowing more about dairy's proAction initiative. The webinars will also be recorded for your convenience.



David Wiens is a dairy farmer from Grunthal, Manitoba, president of the proAction committee, is also chairman of Dairy Farmers of Manitoba and president of the DFC promotion committee.

Webinars will be recorded and made available after the initial presentation as well!

QUOTA EXCHANGE

The market-clearing price established for the March 2015 Quota Exchange was **\$29,000.00**

The next Quota Exchange will be held on **April 15, 2015**. All offers to sell and bids to purchase quota through the Quota Exchange must be received at the SaskMilk office by midnight, **April 6, 2015**. SaskMilk recommends that offers and bids be submitted well in advance of the deadline date to ensure adequate time for corrections, if necessary.

When making bids on the Quota Exchange, the price on offers to sell quota is the minimum price that the producer is prepared to accept for that quota. Only if the market-clearing price is equal to or greater than the producer's minimum price will that producer qualify for participation in the Exchange. Conversely, the price on offers to purchase quota is the maximum price that the producer is prepared to pay for that quota. Only if the market-clearing price is equal to or less than the producer's maximum price will that producer qualify for participation in the Exchange. The clearing price is set at the price where the smallest difference exists between the accumulated volume offered for sale and the accumulated volume bid to purchase.

The results of the Quota Exchange are outlined in the following Table.

MARCH 2015 QUOTA EXCHANGE RESULTS SUMMARY

Market Clearing Price per kilogram of butterfat	\$ 29,000.00
Daily Kilograms offered to Purchase	4.00
Kilograms offered to Sell	29.00
Kilograms sold	4.00
Number of Producers	
- offered to purchase	3
- purchased quota	3
- offered to sell	7
- sold quota	3

MARCH 2015 QUOTA EXCHANGE CLEARING PRICE RESULTS

Price (\$/daily kg b.f.)	No. of Sellers	Cumulative Sellers	Daily Kgs b.f. offered for sale	Cumulative sales	Cumulative Sales less Cumulative purchases	Cumulative purchases	Daily Kgs b.f. offered to purchase	Cumulative bidders	No. of buyers
\$27,000.00	1	1	1.00	1.00	-3.00	4.00	0.00	3	0
\$28,000.00	1	2	1.00	2.00	-2.00	4.00	0.00	3	0
\$29,000.00	1	3	3.00	5.00	1.00	4.00	0.00	3	0
\$29,500.00	1	4	5.00	10.00	6.00	4.00	1.00	3	1
\$30,000.00	1	5	4.00	14.00	11.00	3.00	3.00	2	2
\$30,500.00	1	6	5.00	19.00	19.00	0.00	0.00	0	0
\$32,000.00	1	7	10.00	29.00	29.00	0.00	0.00	0	0

*** Please contact Bev Solie at 306-949-6999 for inquiries dealing with quota management sheets, the Quota Exchange, for transfer credits, or with any other quota transactions.**

TRANSFER CREDIT SUMMARY REPORT

MONTH	# OF PRODUCERS TRANSFER IN	# OF PRODUCERS TRANSFER OUT	TOTAL KGS BUTTERFAT
February	23	16	19,294
March	26	21	21,973
April	16	12	11,722
May	15	12	12,618
June	10	8	7,204
July	15	12	13,322
August	15	12	11,915
September	19	18	23,202
October	10	10	10,988
November	12	10	13,140
December	19	12	20,889
January, 2015	23	19	19,605
February	20	15	20,251

PRIVATE TRANSFERS PROCESSED

MONTH	DAILY KILOGRAMS
Mar	132.84
Apr	419.23
May	145.23
June	18.50
July	20.00
Aug	615.73
Sept	336.41
Oct	12.71
Nov	24.35
Dec	11.00
Jan-2015	0.00
Feb	959

OVER QUOTA (OVER 5 DAYS) REPORT BY MONTH

MONTH	# OF PRODUCERS	KGS BUTTERFAT
February	17	2,940
March	19	2,338
April	20	4,163
May	13	1,411
June	15	1,791
July	11	1,266
August	3	354
September	2	102
October	3	32
November	5	403
December	6	767
January, 2015	7	2,739
February	9	3,272

SUMMARY REPORT OF CREDITS February, 2015 – 163 PRODUCERS

DAYS	# OF PRODUCERS	POSITIVE CREDITS ACCUMULATED (KGS OF BUTTERFAT)
+ 5	9	5,965
0 to + 5	29	6,510
TOTAL	38	12,475
DAYS	# OF PRODUCERS	NEGATIVE CREDITS ACCUMULATED (KGS OF BUTTERFAT)
-15	11	-17,088
-10 to -15	30	-83,038
-5 to -10	42	-45,664
0 to -5	42	-20,602
TOTAL	125	-166,392

LOST OPPORTUNITY REPORT

MONTH	# OF PRODUCERS	LOST OPPORTUNITY (KGS OF BUTTERFAT)
February	8	542
March	3	240
April	7	1,104
May	10	1,792
June	5	2,823
July	9	3,717
August	17	7,315
September	16	3,722
October	16	8,971
November	13	3,774
December	19	6,444
January, 2015	18	7,440
February	11	3,569

WEIGHTED AVERAGE COMPONENT TESTS & PRICES February, 2015

Components	Average Test	Price per kilogram Class 1 to 5
Butterfat	4.0900	11.197932
Protein	3.3573	8.197924
Other Solids	5.7279	1.201257

Based on the average component tests for the province, the average price received was **\$80.2032** per hectolitre. **The average butterfat price received per kilogram was \$19.53**

SASKATCHEWAN MILK POOL RESULTS February 2015

Milk Sale Revenue	\$ 14,075,650.67
Western Milk Pool	\$ 806,167.23
Plant of Last Resort Service	\$ (55,463.39)
Total Pool Value	\$ 14,826,354.51

In February, Saskatchewan had a monthly CDC allocation of **747,742 kilograms** of butterfat. In the month of February, Saskatchewan production was **11,609** of butterfat **over** and cumulatively **under** by **-111,877 kilograms** of butterfat. On a percentage basis, Saskatchewan is **-1.18%** within our CDC allocation flexibility limits based on the Continuous Quota model. The -1.50% lower flexibility limit is in effect.

	(1) Monthly Total Production Kgs bf	(2) Total Monthly CDC Quota Allocation Kgs bf	(3) Monthly Over or (Under) Production Kgs bf col. 1 – 2 = 3	(4) Lower Flexibility Limit (1.5%) Kgs bf col. 9 * -1.5%	(5) Upper Flexibility Limit 1.0% Kgs bf col. 9 *1.0%	(6) Cumulative Over or (Under) Production with limits Kgs bf	(7) Cumulative Over or (Under) Production with limits in - % col. 6 / 9	(8) Over Quota or (Lost Production Opportunity) Kgs bf	(9) Rolling 12 Month Total Quota Kgs bf
Feb-14	705,370	709,836	(4,466)	(135,940)	45,313	(66,474)	-0.73%	0	9,062,696
Mar-14	778,842	771,216	7,626	(135,992)	45,331	(58,458)	-0.64%	0	9,066,120
Apr-14	759,580	765,873	(6,293)	(136,382)	45,461	(64,773)	-0.71%	0	9,092,104
May-14	794,737	781,223	13,514	(136,885)	45,628	(57,303)	-0.63%	0	9,125,672
Jun-14	761,220	759,569	1,651	(137,511)	45,837	(58,840)	-0.64%	0	9,167,373
Jul-14	770,028	768,975	1,053	(138,077)	46,026	(57,522)	-0.62%	0	9,205,114
Aug-14	755,864	775,617	(19,753)	(138,628)	46,209	(86,128)	-0.93%	0	9,241,841
Sept-14	757,014	785,984	(28,970)	(139,355)	46,452	(115,663)	-1.24%	0	9,290,311
Oct-14	784,475	837,039	(52,564)	(139,977)	46,659	(139,977)	-1.50%	(29,529)	9,331,833
Nov-14	777,547	806,726	(29,179)	(140,477)	46,826	(140,477)	-1.50%	(28,634)	9,365,141
Dec-14	811,818	846,968	(35,150)	(140,987)	46,996	(140,987)	-1.50%	(34,624)	9,399,124
Jan-15	826,269	806,291	19,978	(141,417)	47,139	(120,978)	-1.28%	0	9,427,790
Feb-15	759,351	747,742	11,609	(142,029)	47,343	(111,877)	-1.18%	0	9,468,575

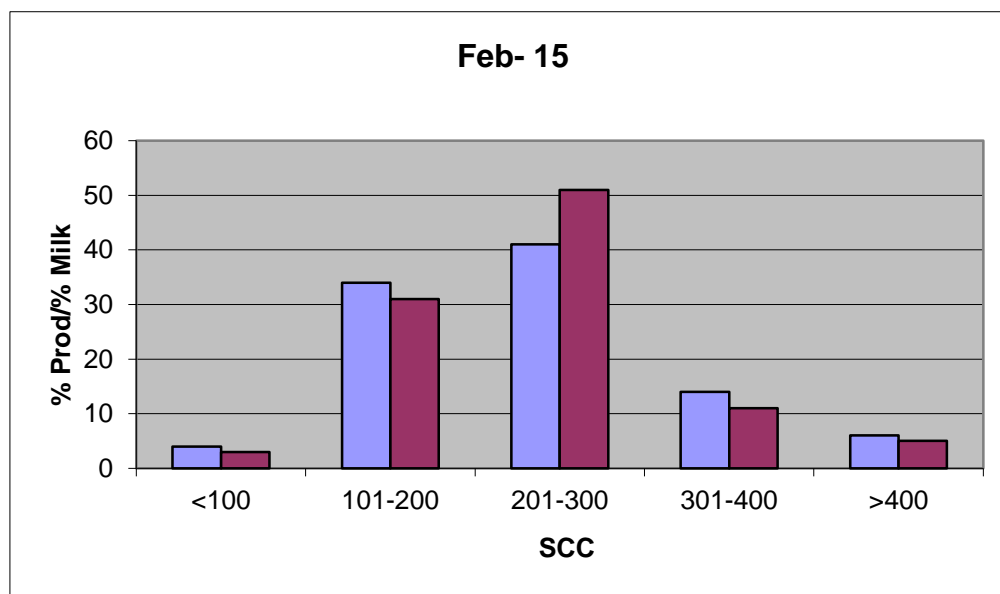
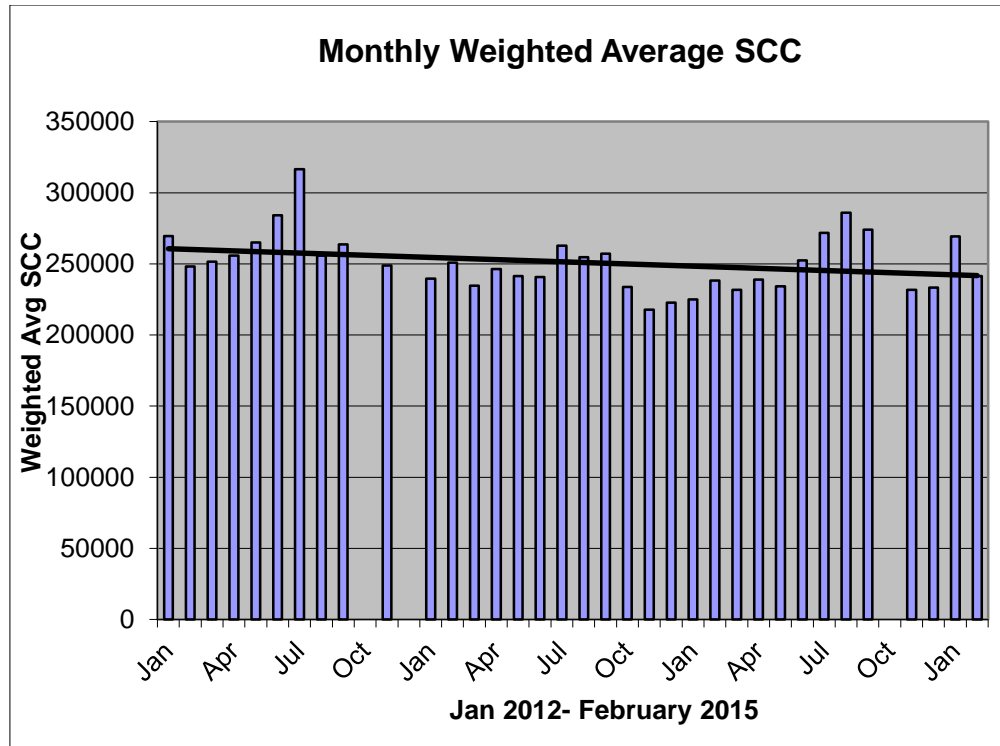
- (1) Monthly Production in Saskatchewan
- (2) Total Monthly Quota = Class 1 sales + Monthly MSQ + Carry Forward
- (3) Difference between the monthly production (1) and the total monthly quota (2)
- (4) The Lower Flexibility Limit is -1.5% of Rolling 12 Month Total Quota (9)
- (5) The Upper Flexibility Limit is 1.0% of Rolling 12 Month Total Quota (9)
- (6) Previous Month Cumulative Over or (Under) Production + Current Monthly Over or (Under) Production (capped at lower or upper limit if applicable)
- (7) Equal to Column (6) expressed as a percentage basis within the flexibility limits
- (8) Over Quota or (Lost production opportunity) outside of flexibility limits
- (9) Total Monthly CDC Quota Allocation for the previous 12 months

SCC LIMIT NOW 400,000

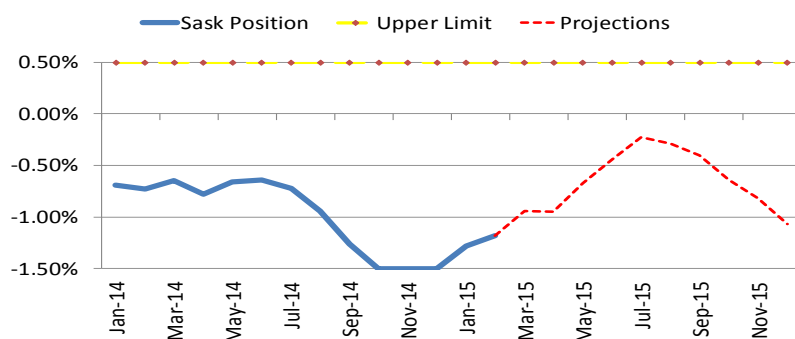
Effective January 1, 2013, the SCC limit has changed to 400,000. Penalties and violations will be applied based on the new limit.

The following graphs provide producers with an overview of the Provincial Somatic Cell Count weighted average on a monthly basis as well as a breakdown of the % of producers in each SCC level for the month of February 2015.

If you have any questions or comments you can contact: Deb Haupstein at 306-721-9486.



SK Milk Production



INHIBITOR TEST STATIONS

SaskMilk has established a number of inhibitor test stations around the province. Producers needing to check their bulk tanks for inhibitors can take a sample to the test station closest to their location.

Charm test strips are available to test for:

Beta-Lactams- the Charm 3 SL3 Beta Lactam test strip tests for amoxicillin, ampicillin, ceftiofur, cephalixin, cloxacillin, and penicillin G

Tetracyclines- the Charm Tetracycline test strip tests for chlortetracycline, oxytetracycline and tetracycline.

Sulfas- the Charm Sulfa test strip tests for sulfacetamide, sulfachlorpyridazine, sulfadiazine, sulfadimethoxine, sulfadoxine, sulfaethoxypyridazine, sulfamerazine, sulfamethazine, sulfamethizole, sulfamethoxazole, sulfamethoxypyridazine, sulfapyridine, sulfaquinoxaline, sulfathiazole, and sulfisoxazole.

Test stations are located at the following locations:

1. Swift Current, SK - Agrifoods truck bay - 675 Cheadle Street West
Office 306-773-1097 or Rodger Ruf 306-741-3261
2. Harris, SK - Cairns Farm - Wes Cairns 306-665-4807
3. Star City, SK - Star City Colony - Reuben Tschetter 306-921-9381
4. Grenfell, SK - Jim Ross 306-697-2232
5. Yorkton, SK - Ford Dairy Farms Inc. - Bud and Margaret Ford 306-782-7240
6. Saskatoon, SK - Agrifoods Truck Bay - east of the Saputo plant receiving bay
lead hand - Jim or Clint 306-664-0202 after hours: 306-668-8135

Charm test strips and Charm testers are now available for purchase through SaskMilk. Agrifoods is now carrying SNAP test kits for tetracyclines as well as beta lactams.

For further information you can contact: Deb Hauptstein 306-721-9486

Notice of 2015 Spring Producer Meetings

Agenda items include:

- CQM Updates and Information
- New Entrant program information and feedback
- Pro-Action Update
- Production information
- National Modernization Strategy information

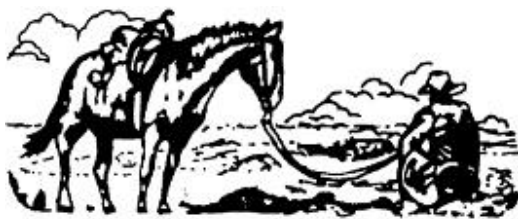
Dates and Locations:

NOTE: Registration begins at 9:30 a.m.
Meetings begin at 10:00 a.m.

April 14th – Fort Qu’Appelle
Royal Canadian Legion
197 Company Avenue
Fort Qu’Appelle, SK

April 15th – Swift Current
F.O.E. Eagles
1910S Service Road West
Swift Current, SK

April 16th – Warman
Legends Centre
701 Centennial Blvd. N.
Warman, SK



Saskatchewan
STOCKGROWERS
Association

Plan to attend an upcoming SSGA Zone meeting
near you.

All producers are welcome to attend.

[SSGA Zone 2 Annual Meeting](#)

March 20, 2015
Weyburn, SK

[SSGA Zone 1 Annual Meeting](#)

March 28, 2015
Alameda, SK

Code of Practice

2.2 Nutrition and Feed Management

The nutritional requirements of the cow can be met using a variety of feed components. Cows can be fed a total mixed ration (TMR) or alternatively a component based ration.

Correct feed management is necessary to ensure good health and welfare. Cows are motivated to perform the same activity at the same time (e.g., feed, rest, ruminate). Cows also prefer to eat during daylight hours. Increased feeding frequency (at least twice per day) has been found to reduce the amount of total mixed ration (TMR) sorting that occurs and allows subordinate cows to access feed more often. Feed management programs that consider such behavioral needs are likely to reduce stress and aggressive behaviors within a herd, and have a positive impact on herd health and productivity (27).

Dairy cattle experience a number of transition periods (unweaned to weaned, dry to fresh) that present nutritional challenges for producers to meet. Feeding practices have a major impact on the overall health and welfare of cattle. Cattle that are not fed adequately will be hungry, and are also more likely to have reduced immune function (31).

REQUIREMENTS

Cows must receive a ration that is adequate for maintaining health and vigor.

RECOMMENDED BEST PRACTICES

- a. ensure the composition of diets reflects production level, reproductive stage, body size, housing and weather conditions
- b. test nutrient content of feed ingredients used
- c. ensure all rations have been balanced and that all feed components used in the ration are of good quality and free of spoilage
- d. Provide fresh feed to the cow daily when she is in the barn, except when fasting is required for medical reasons
- e. minimize factors that create stress or aggressive behaviors within a herd
- f. provide adequate linear feed bunk space (e.g., 24in, 60cm, per cow)
- g. keep a consistent feeding schedule
- h. provide adequate bunk access time
- i. ensure continuous access by pushing up feed in the bunk.



If You Can't Ship It - Test It!

BSE surveillance is still important and every animal tested makes a difference.

Support your cattle industry by having your 4-D (dead, diseased, dying or downer) cattle tested for BSE.

For more information, call the Canadian Food Inspection Agency at 1-877-727-5273.

QUOTA LISTING or CLASSIFIED AD SERVICE

SaskMilk offers a free quota listing service as part of its Newsletter. Anyone wishing to sell or purchase quota and/or cows or miscellaneous dairy equipment is welcome to contact the SaskMilk office at (306) 949-6999. All prices and negotiations will be independent of SaskMilk. **Please note that ads will be posted in two issues and will then be removed unless SaskMilk is notified otherwise.**

Classifieds

For Sale: Fresh Holstein heifers
Call Paul at #780-842-6508

Lemar Farms Inc. Custom liquid manure hauling. **Call George Janzen 306-227-5757**

Looking for: Stainless steel wash sink:
47 1/2" long by 19" wide by 22" deep.
Call for details **306-298-4445**

Selling: 350 Regular cab long box gas truck. 300,000 kms. Very clean and well taken care of. Call for details **306-298-4445**

For Sale: Alliance Harvestore Silo unloaders, 2 stage blowdeck to fill Harvestore silo built new couple of years ago, 2 Dion S 55 HO Forage blowers, 1 Gehl silage blower. **Contact Jent Postma 306 280 7646**

For Sale: Quota and Cows.
Contact Grant Haus 306-762-4441

SASKMILK BOARD OF DIRECTORS

Melvin Foth – Chair
(306) 225-4678
fvl@sasktel.net

Brad Kornelius – Vice Chair
(306) 239-4200
bradkornelius@gmail.com

David Entz
(306) 626-3300
davidentz3662@gmail.com

Jack Ford
(306) 328-4700
jackford@sasktel.net

Isaac Klassen
(306) 249-4435
isaac00@sasktel.net

Brian Lindenbach
(306) 771-2721
broyhill192@gmail.com

Ryan Enns
(306) 220-7993
corandryan@gmail.com

Tom Mackenzie
(306) 352-2292
tommymilk@icloud.com

Denise Coghill
(306) 699-2539
denmars@sasktel.net

For further information, please contact the SaskMilk office.
444 McLeod Street
Regina, Saskatchewan S4N 4Y1
Telephone: (306) 949-6999
Fax: (306) 949-2605
Website: www.saskmilk.ca
Email: info@saskmilk.ca