

2015 Dairy Farm Sustainability Award

In this Issue:

Ag Ed 2014.....	2
CQM Registration.....	3
Quota Exchange.....	4
Production.....	7
SCC.....	8
Dairy Info Day.....	10
Best Practices.....	11
Classifieds.....	12
Directors	12

Dairy Farmers of Canada (DFC) invites you to participate in the **2015 Dairy Farm Sustainability Award**. Sponsored by [DeLaval Canada](#), the Award recognizes dairy farmers across Canada who produce milk in a highly sustainable way. The Dairy Farm Sustainability Award is awarded to Canadian dairy farmers who have adopted environmentally sustainable practices that are also financially viable. The practices adopted by the farmers must also bring social benefits to Canadians and future generations.

DFC would like to thank DeLaval for its continued collaboration and support in recognizing Canadian dairy farmers' that enhance the lives of their communities and future generations.

This year's winner will receive a free trip to beautiful Vancouver (BC) to accept the trophy at DFC's Annual General Meeting in July 2015.

To be eligible for this Award, an individual must:

- be a dairy farmer with quota holdings in Canada; and
- have a dairy operation with an up-to-date Environmental Farm Plan developed in the last five years in accordance with applicable provincial programs.

You can submit your nominations, or that of a fellow farmer, between **December 1st 2014** and **March 6th 2015**, along with two letters of recommendation. You can obtain the application form at [DairyFarmers.ca](#) website or contact your provincial office for additional information.

Nominations will be evaluated by a selection committee, and the winning farm's accomplishments will be celebrated in a video at the DFC AGM, where the winners will also receive a trophy and prize.

Details on rules, information on the judging and the nomination form are available at [DairyFarmers.ca](#).

Ag Education 2014- Another successful year!

Throughout 2014 SaskMilk participated in a number of Agri Education Events around the province. Most of these events involved milking demonstrations and we would like to thank the producers who volunteered their help and their cows to make these events possible.

Prince Albert Ag Education Showcase 707 students 17 teachers

Thanks to Plum Blossom Farms- Art and Elaine Pruim, for providing two cows for the milking demonstrations. This was the first year for the milking demonstrations and it was a big hit with the students.



Swift Current Discover the Farm: A Farm Facts Experience 503 students 38 teachers

This was the first year that we participated in this event with a dairy slide show and display. A milking demonstration is definitely being considered for the upcoming year.

Saskatoon Ag Experience 700 students 42 teachers

Thanks again to Plum Blossom Farms for providing two cows for the milking demonstrations. The demonstrations have been an integral part of Ag Experience since it began.

Yorkton Harvest Showdown 764 students 33 teachers plus the general public

Thanks to Ford Dairy Farm- Bud & Margaret Ford and family (Leonard, Lori, Grant and Glen) for supplying the cow as well as the expertise for the demos.

Agribition- Agri-Ed Dairy Display 5804 students 222 teachers plus the general public

The Agri-Ed Dairy Display runs from Monday through Saturday with 5 milking demonstrations being done each day. Setup, take down, manning the display and evening milkings takes time and commitment.



Thanks to the volunteers Jen Strudwick, Jordan Konkel, Lyle Pretty, Mike Steifel, Lucas Lindenbach, Adam Lindenbach, Brian Lindenbach, Dale Strudwick, Arliss Strudwick, Austin Schaeffer, Cathy Schaeffer, Kevin and Denise Coghill, Calvin Dovell, Travis & Ryan Ell, Mike Flaman, Dustin Mainil, Jen Barrett, Branden Mainil, Ian Crosby, Kenton Lindenbach, Blair Gaab, Brena Moser, Rob Pickering and Britton Cooper. Special thanks to Bob Crowe for the highly entertaining and informative milking demonstrations.



Cattle were provided by: Chris Adie Holsteins Ltd., Benbie Holsteins Ltd., Hyljon Holsteins, Robella Holsteins, Lampada Holsteins, Jimlee Holsteins and Ronleen Holsteins.

Thanks for donations from: Dairyland Agro Supply Ltd. - Wash boots, Red Wing Shoe Store- Wash suit and Masterfeeds our grain supplier for the 2014 display.

CQM REGISTRATION

REMINDER:

All producers in the provinces must be registered on the CQM program by the end of 2015.

Producers new to the program must have completed three months of records before they can apply for registration.

The **Records** the CQM program requires producers to keep are:

- Veterinary prescriptions for drugs used extra- label
- List of medicines and chemicals used on livestock
- Livestock treatment record
- Broken needle record
- Bulk tank temperature log
- Milking equipment sanitation record
- Cleaning and sanitizing chart
- Annual wash system evaluation
- Water record

Producers are also required to have:

Standard Operating Procedures:

- Pre-milking
- Milking
- Milking cattle with abnormal or treated milk
- Post milking cleaning
- Treating cattle
- Shipping cattle
- Feeding medicated feed

Corrective Action Plans

- Corrective action plans outline the steps to take to correct a problem. Corrective Action plans should contain detailed instructions and contact numbers and the CQM program requires producers to write a Corrective Action plan for specific scenarios.

Deviations and Corrective Actions

- If a problem or deviation occurs the CQM program requires that corrective actions be carried out to correct the problem and that each deviation and chosen corrective action be documented.

Information on all of this is in the CQM workbook and reference manual. If you have questions or want to apply for CQM registration please contact Deb Haupstein

deb.haupstein@saskmilk.ca 306-721-9486

QUOTA EXCHANGE

The market-clearing price established for the January 2015 Quota Exchange was **\$28,000.00**

The next Quota Exchange will be held on **February 15, 2015**. All offers to sell and bids to purchase quota through the Quota Exchange must be received at the SaskMilk office by midnight, **February 6, 2015**. SaskMilk recommends that offers and bids be submitted well in advance of the deadline date to ensure adequate time for corrections, if necessary.

When making bids on the Quota Exchange, the price on offers to sell quota is the minimum price that the producer is prepared to accept for that quota. Only if the market-clearing price is equal to or greater than the producer's minimum price will that producer qualify for participation in the Exchange. Conversely, the price on offers to purchase quota is the maximum price that the producer is prepared to pay for that quota. Only if the market-clearing price is equal to or less than the producer's maximum price will that producer qualify for participation in the Exchange. The clearing price is set at the price where the smallest difference exists between the accumulated volume offered for sale and the accumulated volume bid to purchase.

The results of the Quota Exchange are outlined in the following Table.

JANUARY 2015 QUOTA EXCHANGE RESULTS SUMMARY

Market Clearing Price per kilogram of butterfat	\$ 28,000.00
Daily Kilograms offered to Purchase	26.00
Kilograms offered to Sell	15.39
Kilograms sold	5.39
Number of Producers	
- offered to purchase	3
- purchased quota	1
- offered to sell	5
- sold quota	4

JANUARY 2015 QUOTA EXCHANGE CLEARING PRICE RESULTS

Price (\$/daily kg b.f.)	No. of Sellers	Cumulative Sellers	Daily Kgs b.f. offered for sale	Cumulative sales	Cumulative Sales less Cumulative purchases	Cumulative purchases	Daily Kgs b.f. offered to purchase	Cumulative bidders	No. of buyers
\$24,750.00	1	1	0.11	0.11	-25.89	26.00	0.00	3	0
\$24,999.00	1	2	1.28	1.39	-24.61	26.00	0.00	3	0
\$25,000.00	0	2	0.00	1.39	-24.61	26.00	15.00	3	1
\$26,500.00	1	3	1.00	2.39	-8.61	11.00	0.00	2	0
\$27,000.00	1	4	3.00	5.39	-5.61	11.00	1.00	2	1
\$28,000.00	0	4	0.00	5.39	-4.61	10.00	10.00	1	1
\$29,999.00	1	5	10.00	15.39	15.39	0.00	0.00	0	0

*** Please contact Bev Solie at 306-949-6999 for inquiries dealing with quota management sheets, the Quota Exchange, for transfer credits, or with any other quota transactions.**

TRANSFER CREDIT SUMMARY REPORT

MONTH	# OF PRODUCERS TRANSFER IN	# OF PRODUCERS TRANSFER OUT	TOTAL KGS BUTTERFAT
December	16	16	12,105
January, 2014	20	17	19,783
February	23	16	19,294
March	26	21	21,973
April	16	12	11,722
May	15	12	12,618
June	10	8	7,204
July	15	12	13,322
August	15	12	11,915
September	19	18	23,202
October	10	10	10,988
November	12	10	13,140
December	19	12	20,889

PRIVATE TRANSFERS PROCESSED

MONTH	DAILY KILOGRAMS
Jan-2014	522.98
Feb	0.00
Mar	132.84
Apr	419.23
May	145.23
June	18.50
July	20.00
Aug	615.73
Sept	336.41
Oct	12.71
Nov	24.35
Dec	11.00

OVER QUOTA (OVER 5 DAYS) REPORT BY MONTH

MONTH	# OF PRODUCERS	KGS BUTTERFAT
December	20	5,216
January, 2014	21	5,133
February	17	2,940
March	19	2,338
April	20	4,163
May	13	1,411
June	15	1,791
July	11	1,266
August	3	354
September	2	102
October	3	32
November	5	403
December	6	767

SUMMARY REPORT OF CREDITS December, 2014 – 164 PRODUCERS

DAYS	# OF PRODUCERS	POSITIVE CREDITS ACCUMULATED (KGS OF BUTTERFAT)
+ 5	6	3,400
0 to + 5	19	5,094
TOTAL	25	8,494
DAYS	# OF PRODUCERS	NEGATIVE CREDITS ACCUMULATED (KGS OF BUTTERFAT)
-15	19	-31,029
-10 to -15	40	-85,512
-5 to -10	39	-66,355
0 to -5	41	-15,349
TOTAL	139	-198,245

LOST OPPORTUNITY REPORT

MONTH	# OF PRODUCERS	LOST OPPORTUNITY (KGS OF BUTTERFAT)
December	10	2,487
January, 2014	8	1,723
February	8	542
March	3	240
April	7	1,104
May	10	1,792
June	5	2,823
July	9	3,717
August	17	7,315
September	16	3,722
October	16	8,971
November	13	3,774
December	19	6,444

WEIGHTED AVERAGE COMPONENT TESTS & PRICES December, 2014

Components	Average Test	Price per kilogram Class 1 to 5
Butterfat	4.1142	11.287371
Protein	3.3912	8.287371
Other Solids	5.6938	1.233981

Based on the average component tests for the province, the average price received was **\$81.5688** per hectolitre. **The average butterfat price received per kilogram was \$19.81**

SASKATCHEWAN MILK POOL RESULTS December 2014

Milk Sale Revenue	\$ 16,910,127.28
Western Milk Pool	\$ (774,936.59)
Plant of Last Resort Service	\$ (55,107.46)
Total Pool Value	\$ 16,080,083.23

In December, Saskatchewan had a monthly CDC allocation of **846,968 kilograms** of butterfat. In the month of December, Saskatchewan production was **-35,150** of butterfat **under** and cumulatively **under** by **-140,987 kilograms** of butterfat. On a percentage basis, Saskatchewan is **-1.50%** within our CDC allocation flexibility limits based on the Continuous Quota model. The -1.50% lower flexibility limit is in effect.

	(1) Monthly Total Production Kgs bf	(2) Total Monthly CDC Quota Allocation Kgs bf	(3) Monthly Over or (Under) Production Kgs bf col. 1 – 2 = 3	(4) Lower Flexibility Limit (1.5%) Kgs bf col. 9 * -1.5%	(5) Upper Flexibility Limit 1.0% Kgs bf col. 9 * 1.0%	(6) Cumulative Over or (Under) Production with limits Kgs bf	(7) Cumulative Over or (Under) Production with limits in - % col. 6 / 9	(8) Over Quota or (Lost Production Opportunity) Kgs bf	(9) Rolling 12 Month Total Quota Kgs bf
Dec-13	794,733	805,742	(11,009)	(135,518)	45,173	(70,182)	-0.78%	0	9,034,530
Jan-14	789,851	769,397	20,454	(135,547)	45,182	(49,676)	-0.55%	0	9,036,438
Feb-14	705,370	709,836	(4,466)	(135,940)	45,313	(66,474)	-0.73%	0	9,062,696
Mar-14	778,842	771,216	7,626	(135,992)	45,331	(58,458)	-0.64%	0	9,066,120
Apr-14	759,580	765,873	(6,293)	(136,382)	45,461	(64,773)	-0.71%	0	9,092,104
May-14	794,737	781,223	13,514	(136,885)	45,628	(57,303)	-0.63%	0	9,125,672
Jun-14	761,220	759,569	1,651	(137,511)	45,837	(58,840)	-0.64%	0	9,167,373
Jul-14	770,028	768,975	1,053	(138,077)	46,026	(57,522)	-0.62%	0	9,205,114
Aug-14	755,864	775,617	(19,753)	(138,628)	46,209	(86,128)	-0.93%	0	9,241,841
Sept-14	757,014	785,984	(28,970)	(139,355)	46,452	(115,663)	-1.24%	0	9,290,311
Oct-14	784,475	837,039	(52,564)	(139,977)	46,659	(139,977)	-1.50%	(29,529)	9,331,833
Nov-14	777,547	806,726	(29,179)	(140,477)	46,826	(140,477)	-1.50%	(28,634)	9,365,141
Dec-14	811,818	846,968	(35,150)	(140,987)	46,996	(140,987)	-1.50%	(34,624)	9,399,124

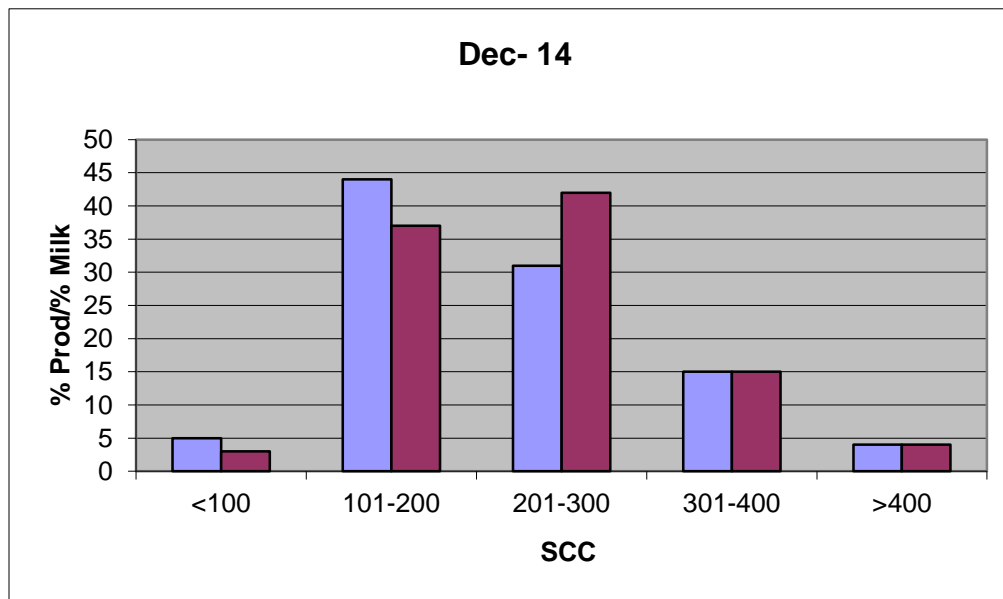
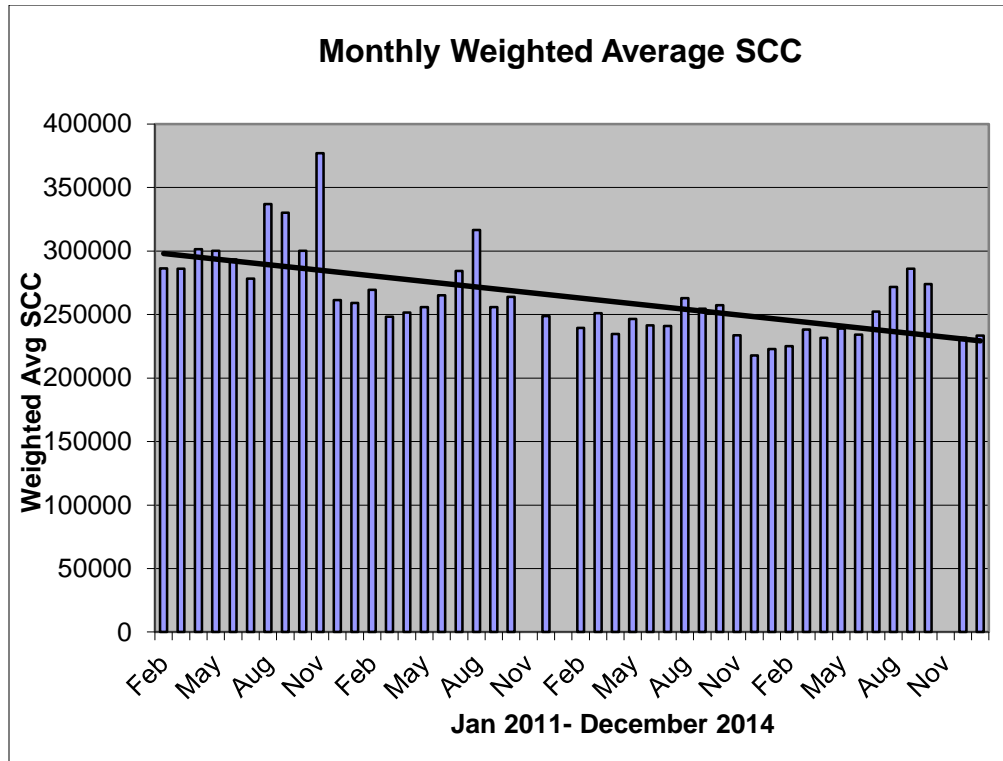
- (1) Monthly Production in Saskatchewan
- (2) Total Monthly Quota = Class 1 sales + Monthly MSQ + Carry Forward
- (3) Difference between the monthly production (1) and the total monthly quota (2)
- (4) The Lower Flexibility Limit is -1.5% of Rolling 12 Month Total Quota (9)
- (5) The Upper Flexibility Limit is 1.0% of Rolling 12 Month Total Quota (9)
- (6) Previous Month Cumulative Over or (Under) Production + Current Monthly Over or (Under) Production (capped at lower or upper limit if applicable)
- (7) Equal to Column (6) expressed as a percentage basis within the flexibility limits
- (8) Over Quota or (Lost production opportunity) outside of flexibility limits
- (9) Total Monthly CDC Quota Allocation for the previous 12 months

SCC LIMIT NOW 400,000

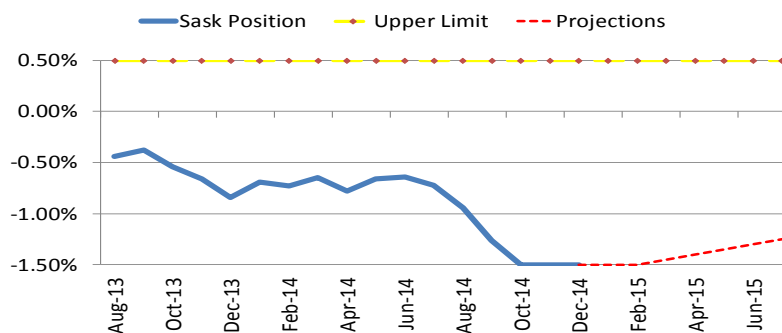
Effective January 1, 2013, the SCC limit has changed to 400,000. Penalties and violations will be applied based on the new limit.

The following graphs provide producers with an overview of the Provincial Somatic Cell Count weighted average on a monthly basis as well as a breakdown of the % of producers in each SCC level for the month of December 2014.

If you have any questions or comments you can contact: Deb Haupstein at 306-721-9486.



SK Milk Production



INHIBITOR TEST STATIONS

SaskMilk has established a number of inhibitor test stations around the province. Producers needing to check their bulk tanks for inhibitors can take a sample to the test station closest to their location.

Charm test strips are available to test for:

Beta-Lactams- the Charm 3 SL3 Beta Lactam test strip tests for amoxicillin, ampicillin, ceftiofur, cephalixin, cloxacillin, and penicillin G

Tetracyclines- the Charm Tetracycline test strip tests for chlortetracycline, oxytetracycline and tetracycline.

Sulfas- the Charm Sulfa test strip tests for sulfacetamide, sulfachlorpyridazine, sulfadiazine, sulfadimethoxine, sulfadoxine, sulfaethoxypyridazine, sulfamerazine, sulfamethazine, sulfamethizole, sulfamethoxazole, sulfamethoxypyridazine, sulfapyridine, sulfaquinoxaline, sulfathiazole, and sulfisoxazole.

Test stations are located at the following locations:

1. Swift Current, SK - Agrifoods truck bay - 675 Cheadle Street West
Office 306-773-1097 or Rodger Ruf 306-741-3261
2. Harris, SK - Cairns Farm – Wes Cairns 306-665-4807
3. Star City, SK - Star City Colony - Reuben Tschetter 306-921-9381
4. Grenfell, SK - Jim Ross 306-697-2232
5. Yorkton, SK - Ford Dairy Farms Inc. - Bud and Margaret Ford 306-782-7240
6. Saskatoon, SK – Agrifoods Truck Bay - east of the Saputo plant receiving bay
lead hand - Jim or Clint 306-664-0202 after hours: 306-668-8135

Charm tests strips and Charm testers are now available for purchase through SaskMilk. Agrifoods is now carrying SNAP test kits for tetracyclines as well as beta lactams.

For further information you can contact: Deb Haupstein 306-721-9486



If You Can't Ship It - Test It!

BSE surveillance is still important and every animal tested makes a difference.

Support your cattle industry by having your 4-D (dead, diseased, dying or downer) cattle tested for BSE.

For more information, call the Canadian Food Inspection Agency at 1-877-727-5273.

4th Annual SaskMilk Dairy Info Day

January 30, 2015

Brian King Centre, Warman, Sk

There is no charge but pre-registration is required to facilitate meal planning

Please RSVP by Friday, January 23, 2015

Phone: 306-949-6999

or deb.haupstein@saskmilk.ca

Agenda items include:

- Rayner Dairy Research and Teaching Facility report on operations
- Report from Rayner Dairy Advisory Board
- Pain control in dairy cattle
- Hairy heel wart research project progress report
- Use of omega-3 products to enhance dairy cattle reproduction
- Omega-3 claims for milk and reproduction: CFIA regulatory requirements
- The impact of pasteurizing colostrum on colostrum bioactivity
- Optimizing feeding management with robotic milking to increase visits and milk production
- Feed processing technology to increase Feed Milk Value for dairy cattle
- Steam flaking of peas for dairy cattle diets
- Use of glycerol, high oil canola meal and DDGS for lactating and transitioning cows
- Putting research results into practice (planning for field trials)

Code of Practice

2.1 Body Condition Scoring

Body condition scoring (BCS) is a tool for determining if an animal is too thin, too fat or in ideal condition. Ideal BCS is a range and will vary depending upon stage of lactation (25). Appendix E - Body Condition Scoring Chart, provides information to assess BCS. Evaluators can assign quarter or half scores for animals that fall between two BCS units. For the purposes of this Code, all Body Condition Scores refer to the scale shown in Appendix E.

Cows should be at an ideal BCS at dry off and should be fed to maintain this condition until calving. Post calving (calving to 120 days) cows can be expected to lose 0.5 to 1 unit of BCS. Cows should not lose more than 1 BCS at any time. BCS should remain constant or begin to increase during mid-lactation. During late lactation cows should gain back the BCS lost during the post-calving period (22).

Cows that are too fat at calving ($BCS > 4$) are more prone to reproductive and metabolic diseases (e.g., difficult calving, retained placenta, cystic ovaries, uterine infections, ketosis, displaced abomasum, milk fever). Cows that are too thin at calving ($BCS < 3.25$) may not have sufficient body reserves to support high levels of milk production. Cows that lose more than 1 BCS experience reduced fertility, particularly if the loss is too rapid (22).

REQUIREMENTS

Producers must take corrective action for animals at a BCS of 2 or lower.

RECOMMENDED BEST PRACTICES

- a. use Appendix E - Body Condition Scoring Chart to regularly assess the BCS's of cows
- b. aim for the following ideal BCS ranges:
 - dry off, 3.25 to 3.75
 - calving, 3.25 to 3.75
 - early lactation, 2.50 to 3.25
 - mid-lactation, 2.75 to 3.25
 - late lactation, 3.00 to 3.50
 - growing heifers, 2.75 to 3.25
 - heifers at calving, 3.25 to 3.75
- c. employ corrective measures if more than 15% of the herd is above or below ideal BCS for their stage of lactation (25)
- d. keep records - identify animals that are too thin or too fat, ascertain the cause, and fix.

QUOTA LISTING or CLASSIFIED AD SERVICE

SaskMilk offers a free quota listing service as part of its Newsletter. Anyone wishing to sell or purchase quota and/or cows or miscellaneous dairy equipment is welcome to contact the SaskMilk office at (306) 949-6999. All prices and negotiations will be independent of SaskMilk. **Please note that ads will be posted in two issues and will then be removed unless SaskMilk is notified otherwise.**

Classifieds

Robotic Milkers for sale:

Two complete 2010 Lely A3 Next milk robots, 2 feed options, CRS control box, Buffer tank, milk tank valve unit, twin filter, Atlas Copco air compressor, 100 Lely HR tags and neck belts.

Call #306-717-1478

OVERSTOCKED – Registered purebred Holstein cows from popular AI sires Mil-En-Roy Farms, White City Sask. Contact Lyle Pretty **#306-771-2777**

For Sale: 70 cow stalls, 70 cow mats, 150 Heifer stalls.

Call Paul at **#306-921-5491**

For Sale: Fresh Holstein heifers

Call Paul at #780-842-6508

SASKMILK BOARD OF DIRECTORS

Melvin Foth – Chair

(306) 225-4678

fvl@sasktel.net

Brad Kornelius – Vice Chair

(306) 239-4200

bradkornelius@gmail.com

David Entz

(306) 626-3300

davidentz3662@gmail.com

Jack Ford

(306) 328-4700

jackford@sasktel.net

Isaac Klassen

(306) 249-4435

isaac00@sasktel.net

Brian Lindenbach

(306) 771-2721

broyhill192@gmail.com

Ryan Enns

(306) 220-7993

corandryan@gmail.com

Tom Mackenzie

(306) 352-2292

tommymilk@icloud.com

Denise Coghill

(306) 699-2539

denmars@sasktel.net

For further information, please contact the SaskMilk office.

444 McLeod Street

Regina, Saskatchewan S4N 4Y1

Telephone: (306) 949-6999

Fax: (306) 949-2605

Website: www.saskmilk.ca

Email: info@saskmilk.ca